



**SAILFEST**  
Sarasota Youth Sailing  
April 1-2, 2023



**IQ Foil**  
**SAILING INSTRUCTIONS Amended (3/31/2023)**  
VHF Ch 69

## 1. RULES

- 1.1 The regatta will be governed by the rules as defined in The Racing Rules of Sailing (RRS).
- 1.2 If there is a conflict between languages, the English text will take precedence.

## 2. NOTICES TO COMPETITORS

Notices to competitors will be posted on the official notice board located ~~in-between-the-shop and-the-bathrooms~~ **at the Squadron Pavillion.**

## 3. CHANGES TO SAILING INSTRUCTIONS

Any change to the sailing instructions will be posted before 0900 on the day it will take effect, except to the extent that any change to the schedule of races will be posted by 1800 on the day before it will take effect.

## 4. Signals Made Ashore

- 4.1 Signals made ashore shall be made from the flag pole in the middle of the main yard.
- 4.2 When flag "AP" is displayed, "1 minute" is replaced with "not less than 45 minutes" in Race signal "AP". This changes race signal "AP".

## 5. Schedule

### Saturday April 1

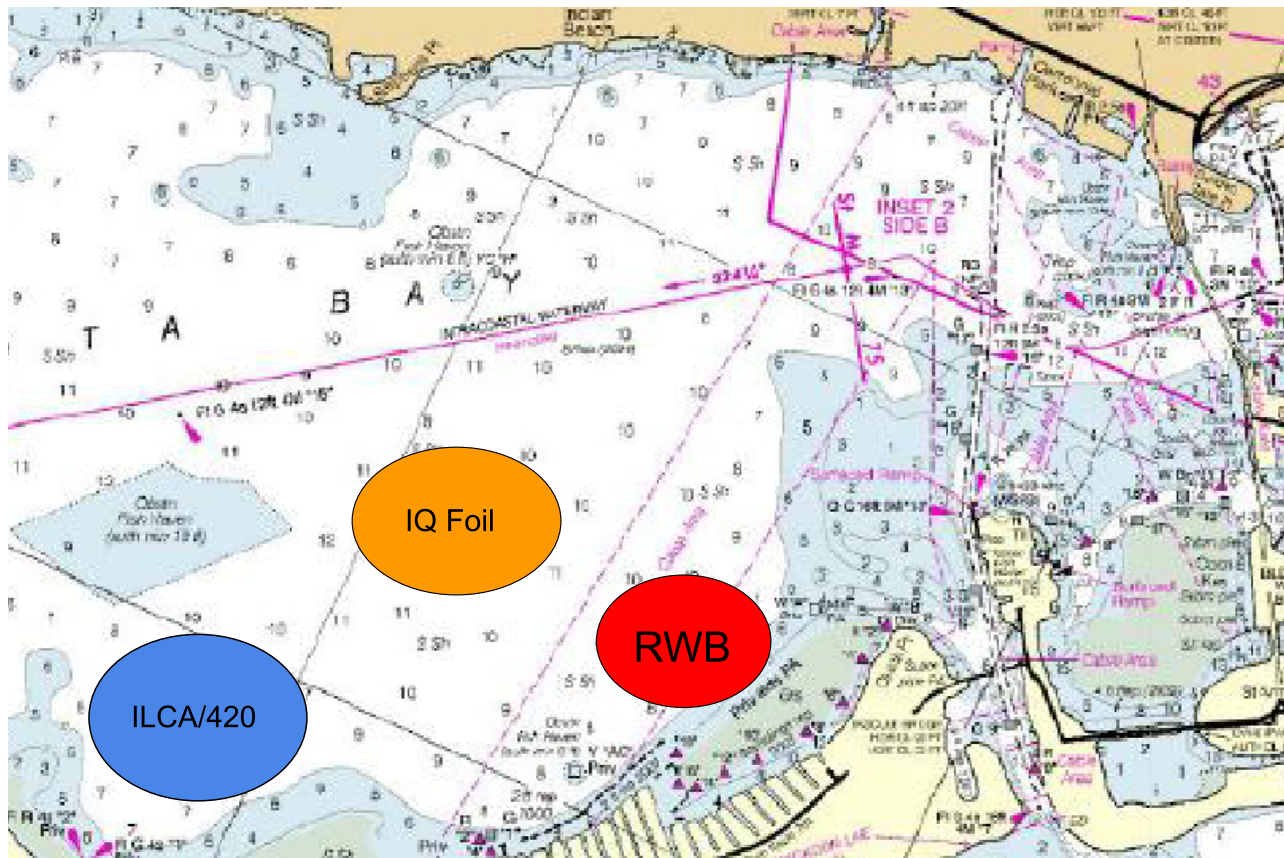
- Skipper's meeting 9:30
- 1030 First possible warning signal

### Sunday April 2nd

- 1000 First possible warning signal
- 1400 Last possible warning Signal

## 6. Racing Area

The racing area will be North East of the sandbar North of SYS



## 7. Course And Change Of The Next Leg Of the Course

7.1 SI appendix A illustrates the course, including the general configuration of the marks, the order in which marks are to be passed, and the side on which each mark is to be left. The course length and exact configuration will be based on sailing conditions.

7.2. To change the next leg of the course, the race committee will move the original mark (or the finishing line) to a new position.

## 8. Marks

Marks will be described in Appendix B

## 9. Start

9.1 Races will be started using the following signals:

Minutes before starting signal	Visual Signal Sound	Signal Means
3	Class flag displayed	Warning
2	U or Black flag displayed	Preparatory
1	U or Black flag removed	One Minute
0	Class flag removed	Start

This changes RRS Appendix B rules 26.1 and 26.2

9.2 Class flags will be ~~as follows-~~ **IQ Foil Class Flag.**

9.3 The starting line will be between a staff displaying an orange starting line flag flown from the signal boat on the starboard end and ~~orange cylinder-~~ **a Red Tetrahedron.**

9.4 Race committee will not hail the sail numbers of the boats that are OCS or subject to starting Penalties.

## 10. Finish

10.1 The finish line will be between the staff of an orange flag of the signal boat and a ~~orange cylinder-~~ **Red Tetrahedron** to leeward of the signal or finish boat.

## 11. Protests, Scoring Reviews, Redress Requests, and Penalties.

11.1 Protest and scoring review forms are available ~~at front desk of the CGSC and can be filed at the front desk.~~ **At the red desk on the Squadron porch.**

11.2 The protest time limit is 45 minutes after the race committee signal vessel docks. The protest time limit will be posted on the official notice board as soon as practical.

## 12. Time Limits

12.1 Time limits and target times for races are in minutes and as follows

Race Type	Target Time	Time Limit	Finish Window
Course Racing	15	25	15
Sprint Slalom	3-4	10	5

12.2 Boards failing to finish within the time stated in the finish window, after the first competitor in that group sails the race according to RRS 28, will be scored Did Not Finish (DNF) or finished in place. This changes RRS 35 and A5.

### **13. Scoring**

13.1 A competitor's series score with the total of her race scores excluding her worst scores(s) as follows: When fewer than six (6) races have been completed, the series score will be the total of all scores. When six (6) or more races have been completed the series score will be the total of scores excluding her worst score.

### **14. Safety**

14.1 Competitors shall check in and out before the protest time limit expires.

14.2 Competitors shall wear a helmet, and impact vest at all times while racing.

### **15. Support Boats**

15.1 Support Boats shall monitor VHF channel 69.

15.2 Engine Cutoff cord shall be worn at all times when engine is running.

### **16. Measurement**

It is the responsibility of each competitor to ensure their equipment conforms with the class rules of the division they are participating in.

### **17. Disclaimer Of Liability**

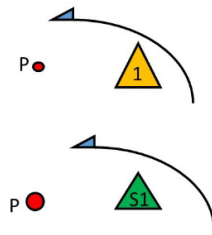
Competitors participate in the regatta entirely at their own risk. See RRS 3, Decision to race.

The organizing authority, the race committee, officers and board of directors of SYS and SSS will not accept any liability for material damage or personal injury or death sustained in conjunction with or prior to, during or after the regatta.

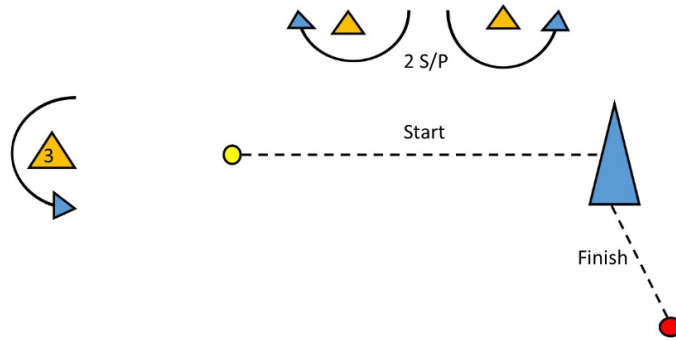
### **18. Prizes**

Prizes will be awarded as stated in the NOR

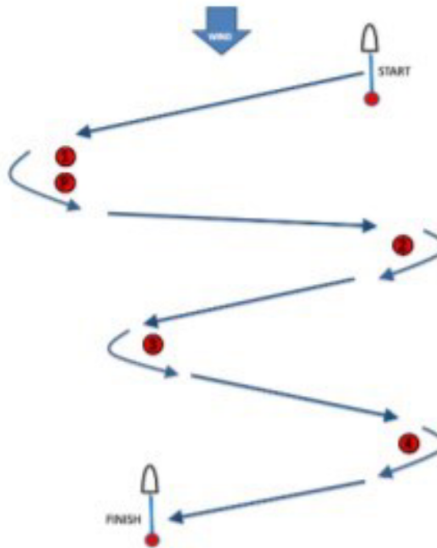
# Appendix A Courses



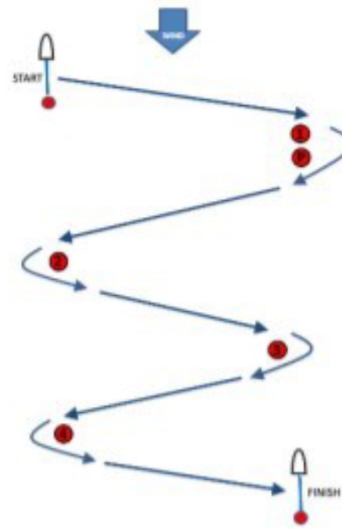
Signal	Rounding order
W 2	Start - 1 - P - 2 S/P - 3 - Finish
W 4	Start - 1 - P - 2 S/P - 1 - 2 S/P - 3 - Finish
SW 2	Start - S1 - P - 2 S/P - 3 - Finish
SW 4	Start - S1 - P - 2 S/P - S1 - 2 S/P - 3 - Finish



## Appendix A Courses



Signal	Mark rounding order
SS4	Start-1-P-2-3-4-Finish



Signal	Mark rounding order
PS4	Start-1-P-2-3-4-Finish

## Appendix B Marks

### Course

SS4, PS4, SD4, PD4

All courses

All courses

All courses

W2 , W4, SW 2, SW 4

SW 2, SW 4

### Mark

1, 2, 3, 4

Start Pin

Finish Pin

P

1, 2 S/P, 3

S<sub>1</sub>

### Color

Pink

Red

Red

Orange

Pink

Green

### Shape

Tetrahedron

Tetrahedron

Tetrahedron

Small Ball

Tetrahedron

Tetrahedron