

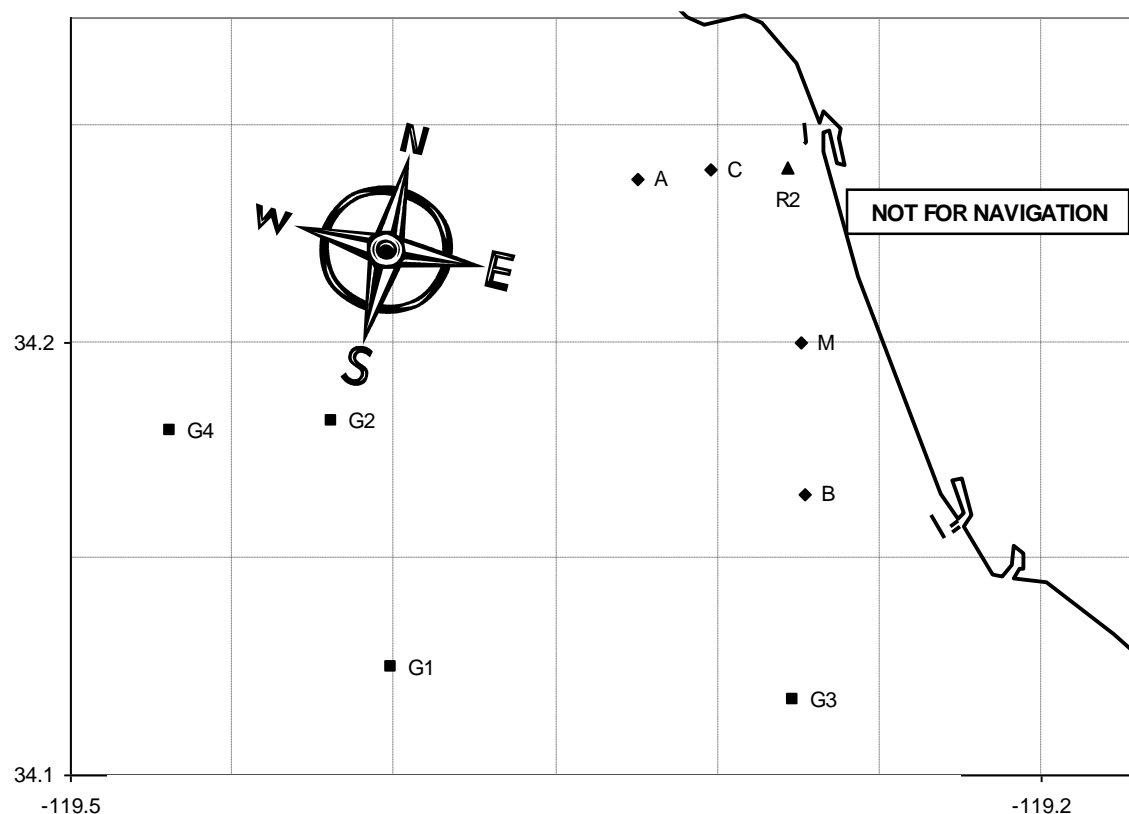
**2023 SPRING SERIES SAILING INSTRUCTIONS, REV. 1, 2/19/23**

Replace page 4 (Course Chart) of the 2023 Spring Series Sailing Instructions with the attached. The Course Chart has been revised to correct errors.

Richard Countess  
PBYC PRO

## 2023 PBYC SPRING SERIES COURSE CHART rev 1, 2/19/23

#	Course	Approx. Heading to 1st Mark, °M	Approx. Length
1	S Bs R2s F	158	9.0
2	S Bs As F	158	11.9
3	S Bs Cp Ap F	158	12.7
4	S Bs G2s F	158	17.4
5	S Bs G1s R2s F	158	21.2
6	S G3p F	165	9.7
7	S G3s R2s F	165	14.9
8	S G3s As F	165	16.6
9	S G3s R2p Ap F	165	18.7
10	S G3s G1s F	165	19.1
11	S G1s F	220	15.8
12	S G1s G2s F	220	19.0
13	S G1s R2p Ap F	220	19.5
14	S G2s F	250	15.0
15	S G2s R2s F	250	17.9
16	S As Cs As F	300	7.5
17	S As R2s F	300	8.8
18	S As Mp R2s F	300	10.5
19	S R2p Ap F	340	8.8
20	S R2p Bp F	340	9.0
21	S R2p G2p F	340	17.9
22	S Cs F	320	5.4
23	S Cp Ap F	320	7.9



### MARKS

A	Fish Sticks spar buoy	L: 34° 14.5' N	Lo: 119° 19.8' W
B	Wes spar buoy	L: 34° 9.9' N	Lo: 119° 16.4' W
C	Chips spar buoy	L: 34° 14.4' N	Lo: 119° 18.2' W
M	Mandalay spar buoy	L: 34° 12.0' N	Lo: 119° 16.5' W
R2	Whistle buoy R"2V"	L: 34° 14.4' N	Lo: 119° 16.7' W
G1	Platform Gail	L: 34° 7.5' N	Lo: 119° 24.0' W
G2	Platform Gilda	L: 34° 10.9' N	Lo: 119° 25.1' W
G3	Platform Gina	L: 34° 7.0' N	Lo: 119° 16.6' W
S	Start in vicinity of Mark M; see Sailing Instructions		
F	Finish in vicinity of Mark M; see Sailing Instructions		