



2023 SHARK'S TOOTH REGATTA

Venice Yacht Club & Venice Sailing Squadron



25 & 26 March 2023

An SBYA "Boat of The Year" Event

Sailing Instructions

1. **RULES:** The regatta shall be governed by the 2021-2024 US Sailing Racing Rules of Sailing (RRS); the current Class Rules of West Florida PHRF (WFPHRF); The Sarasota Bay Yachting Association (SBYA) "Boat of the Year" Notice of Series; this Notice of Race and the Sailing Instructions. In the event of a conflict, the Sailing Instructions shall prevail (this changes RRS 63.7). This event will be a WFPHRF Category 4 event, and all boats must have a functioning GPS and VHF radio.

Oral changes may be made to the Sailing Instructions on the water by the race committee. The race committee will make any changes by VHF transmission to all boats. Failure of a boat to copy VHF transmissions shall not be cause for redress.

2. **NOTICES TO COMPETITORS:** Notices to competitors will be posted on the event website on Regatta Network. (<https://www.regattanetwork.com/event/25817>).
3. **CHANGES TO SAILING INSTRUCTIONS:** Changes to the sailing instructions will be posted before 8:00 am on the day they will take effect, except that any change to the schedule of races will be posted by 8:00 pm on the day before it will take effect.
4. **SIGNALS MADE ASHORE:** There will be no signals made ashore.
5. **SCHEDULE OF RACES:** The dates and times of racing are as follows:

Saturday March 25, 2023: The warning signal for the first class or division to start will be at 10:30 am. Up to three races may be conducted.

Sunday March 26, 2023: The warning signal for the first class or division to start will be at 9:30am. Up to two races may be conducted. No starts will take place after 12:00pm.

6. **CLASSES, DIVISIONS AND FLAGS:** Boats may be assigned to classes or divisions by the organizing authority. Class or Division assignments shall not be cause for redress.

Class and/or Division Flags will be posted on the event website.

7. **RACING AREA:** The racing area will be approximately 2 nm west of the Venice inlet.

8. **COURSES:** The course descriptions are included in attachment A.

The courses will consist of buoy races off the Venice Inlet. The PRO will select the specific course to be sailed for each race. The course name will be posted on the RC boat and the PRO will announce over VHF the location of the RC boat and the course to be sailed approximately 30 minutes before the start of each race. The course selection by the PRO and/or failure by a boat to copy the VHF transmission shall not be cause for redress.

9. **MARKS:** The marks for the course will be orange inflatable or yellow floating marks. The approximate GPS coordinates of the marks are included in Attachment A.

In the event a mark is missing, the race committee is to be informed via VHF immediately and the missing mark's designated GPS coordinates shall be used as a virtual mark. This amends the definition of "mark" in the Rules and changes Rule 34.

The race committee vessel may have a floating mark tied behind her stern. The vessel itself, that mark, and the space between that mark and the vessel shall collectively be the race committee vessel.

10. **CHECK-IN PROCEDURES:** No later than ten minutes before the first warning signal on both racing days, boats shall check-in with the race committee either by passing close to the stern of the race committee vessel and hailing their name and sail number, or via VHF. (DP)

11. **START:** For both racing days, the starting line will be between a staff displaying an orange flag on the race committee vessel and the course side of the starting mark.

The race committee vessel may attempt to hail premature starters either audibly or by VHF. Failure to hail, the order or timing of the hail, or the failure to hear the hail shall not be grounds for redress.

Boats in classes or divisions not scheduled to start (within five minutes of their starting time) shall avoid the starting area. (DP)

12. **FINISH:** For both racing days, the finishing line will be between a staff displaying an orange flag on the race committee vessel and the course side of the finishing mark.

13. **TIME LIMITS:** Time limits are as follows:

For Saturday, 25 March 2023: Boats must finish before 5:00pm. Boats failing to finish before 5:00pm shall be scored Did Not Finish without a hearing. This changes RRS 35.

For Sunday, 26 March 2023: Boats must finish before 1:00pm. Boats failing to finish before 1:00pm shall be scored Did Not Finish without a hearing. This changes RRS 35.

For both days: Boats failing to finish within 30 minutes after the first boat in their class or division sails the course and finishes a race shall be scored Did Not Finish without a hearing. This changes RRS 35.

14. **PENALTY SYSTEM:** RRS Rule 44.3 (Scoring Penalty) shall not apply.

15. **PROTESTS AND REQUESTS FOR REDRESS:** Boats intending to file a hearing request shall inform the race committee on VHF immediately after finishing the relevant race.

Hearing requests shall be delivered to the race committee via email at racing@venicesailingsquadron.org within one hour of the last boat finishing racing for the day. Hearings will be scheduled as soon as practicable.

16. **RADIO COMMUNICATIONS:** The race committee will use VHF channel 69 for all communications with boats. If the communication channel is unusable for any reason, the race committee will designate an alternate channel on channel 16.

A boat that retires from a race or leaves the racing area for the day shall notify the race committee via VHF as soon as possible and advise their intentions. (DP)

Except in an emergency, a boat that is racing shall not make voice or data transmissions and shall not receive voice or data communication that is not freely available to all boats. (DP)

(DP) The notation (DP) in a rule in the Sailing Instructions means that the penalty for a breach of this rule may, at the discretion of the protest committee, be less than disqualification.

ATTACHMENT A: COURSES AND MARK LOCATIONS

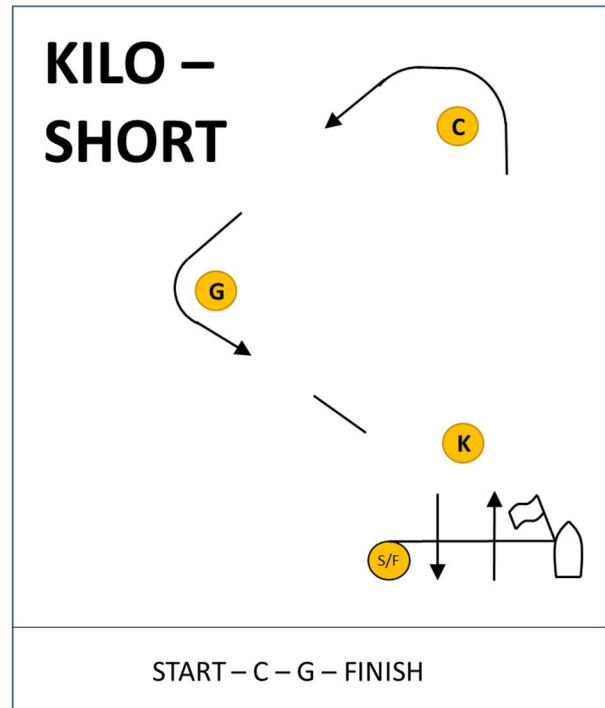
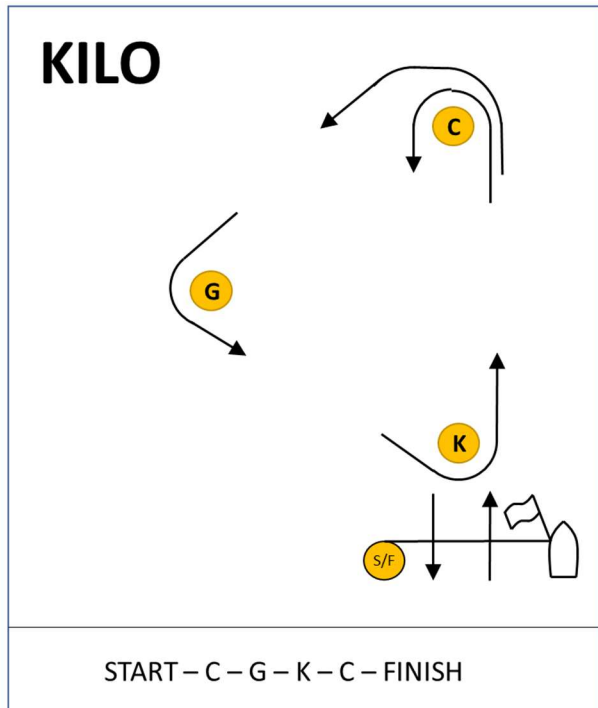
Courses (7.50 nm)

Course name	Mark sequence	Start	Heading deg T	Next mark	Heading deg T	Next mark	Heading deg T	Next mark	Heading deg T	Next mark	Heading deg T	Finish
ALPHA	SF E I A E SF	SF	300	E	180	I	60	A	300	E	120	SF
BRAVO	SF F J B F SF	SF	270	F	150	J	30	B	270	F	90	SF
CHARLIE	SF G K C G SF	SF	240	G	120	K	0	C	240	G	60	SF
DELTA	SF H L D H SF	SF	210	H	90	L	330	D	210	H	30	SF
ECHO	SF I A E I SF	SF	180	I	60	A	300	E	180	I	0	SF
FOXTROT	SF J B F J SF	SF	150	J	30	B	270	F	150	J	330	SF
GOLF	SF K C G K SF	SF	120	K	0	C	240	G	120	K	300	SF
HOTEL	SF L D H L SF	SF	90	L	330	D	210	H	90	L	270	SF
INDIA	SF A E I A SF	SF	60	A	300	E	180	I	60	A	240	SF
JULIET	SF B F J B SF	SF	30	B	270	F	150	J	30	B	210	SF
KILO	SF C G K C SF	SF	0	C	240	G	120	K	0	C	180	SF
LIMA	SF D H L D SF	SF	330	D	210	H	90	L	330	D	150	SF

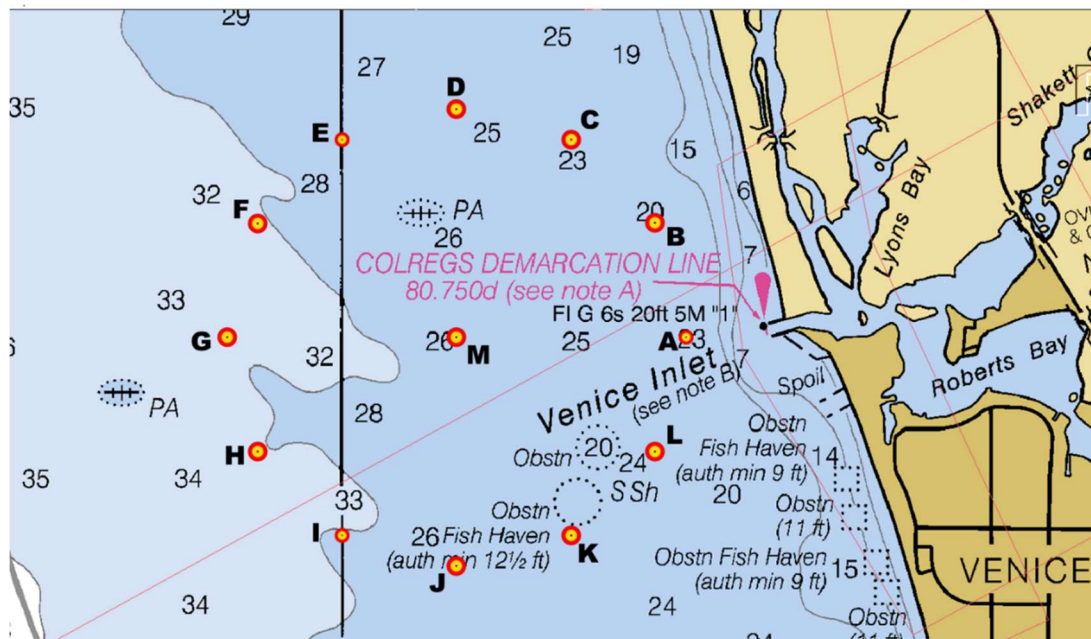
Notes:

- (1) The first mark in the mark sequence is the Starting Mark.
- (2) The last mark in the sequence is the Finishing Mark.
- (3) All marks are to be left to Port.
- (4) In the event the short course (three legs, 4.50nm) is used:
 - The designation will be "Course name - SHORT" (e.g., KILO-SHORT)
 - The last two legs are not part of the course.
 - The Finishing mark will be same as the Starting Mark

Sample courses



Mark Locations diagram - NOT FOR NAVIGATION



Approximate GPS coordinates of marks

Mark Name	North		West	
	Degrees	Minutes	Degrees	Minutes
A	27	6.720	82	28.540
B	27	7.153	82	28.670
C	27	7.470	82	29.026
D	27	7.586	82	29.513
E	27	7.470	82	29.999
F	27	7.153	82	30.356
G	27	6.720	82	30.486
H	27	6.287	82	30.356
I	27	5.970	82	29.999
J	27	5.854	82	29.513
K	27	5.970	82	29.026
L	27	6.287	82	28.670
M	27	6.720	82	29.513