

STINGRAY POINT REGATTA

September 1st - 3rd 2023

Fishing Bay Yacht Club, Deltaville, VA

Friday Distance and East Course Sailing Instructions

1. RULES

- 1.1 The regatta will be governed by *The Racing Rules of Sailing, 2021- 2024*.
- 1.2 If there are any discrepancies between the Notice of Race and the Sailing Instructions, the Sailing Instructions shall take precedence.

2. OFFICIAL NOTICES

- 2.1 The Official Notice Board will be located on the front porch of the main FBYC clubhouse.
- 2.2 Notices affecting the day's races will be posted by 1000 on the day they take effect. Notices affecting the schedule will be posted by 1800 on the day before they take effect.
- 2.3 If a notice is posted, Code Flag "L" will be displayed on the RC Signal Boat, *Mr Roberts*, at her berth on the center dock in Jackson Creek.
- 2.4 S.I.s will be available at Registration as well as posted on <https://www.regattanetwork.com/event/25889>

3. SIGNALS MADE ASHORE

- 3.1 Signals made ashore will be displayed from *Mr Roberts*.
- 3.2 Flag "AP" displayed with two sounds indicates "Racing is postponed" and that the Warning Signal will be made no earlier than 60 minutes after Code Flag "AP" is lowered with one sound. This changes RRS Race Signals "AP".
- 3.3 Announcements regarding postponement ashore or relocation of racing will be made on Fleet Channel, **VHF-72**, approximately 60 minutes prior to scheduled Warning and repeated for as long as the RC feels is appropriate.

4. RADIO USE

- 4.1 The RC will make courtesy announcements via **VHF-72**. Such announcements may include such things as courses to be sailed, timing information, reasons for unexpected delays, etc. These broadcasts are made as a courtesy only and in no way relieve competitors of their responsibility to monitor and respond to RC displays, flags and signals. Failure of the Race Committee to broadcast or a competitor to receive a broadcast from the Race Committee shall not be grounds for redress under Rule 62.1(a).
- 4.2 The RC will only acknowledge transmissions regarding retirements, protests, or emergencies.

5. SCHEDULE

Friday, September 1, 2023

0900 – 1030 Check in for Stingray Light Race

1100 – Skippers' Meeting for Stingray Light Race to be held on the Fishing Bay side of Main Clubhouse.

Ver 1

- 1300 – First warning for Stingray Light Race
- 1600 – 1745 registration and check-in for Saturday and Sunday racing
- 1800 – Mandatory Skippers' Meetings for the Stingray Point Regatta (Saturday and Sunday series)
(To be held on Fishing Bay side of Main Clubhouse.)
- 1830 – Welcome – Distance race awards, followed by social.

Note: The Friday Stingray Light distance race will be scored separately from the races held Saturday and Sunday and will not be counted towards the Brent Halsey, Jr. Memorial Trophy.

Saturday, September 2, 2023

- 0800 – 0900 continental breakfast
- 1100 – First warning for race one
- *Social to follow racing..
- 1830 – 2230 Dinner and awards. Live entertainment provided by Tidewater Drive. (see event site to register prior to event for Dinner - onsite registration will not be available)

Sunday, September 3, 2023

- 0800 – 0900 continental breakfast
- 1100 – First warning for race one
- *Awards and Social to follow racing. Includes the Famous FBYC Nacho Bar and complimentary beverages. . No cost.

* **Multiple races will be run Saturday and Sunday, wind and weather permitting.**

6. RACING AREA

6.1 Racing will be conducted in the general area East of Piankatank River, Gr "3" (FBYC "C") to Gr "1P" (FBYC "E").

7. CLASSES, CLASS FLAGS & ORDER OF STARTS

7.1 An official Scratch Sheet & intended Order of Starts will be posted on RegattaNetwork.

7.2 The Class Flags are:

| Fleet | Class Flag on RC | Backstay |
|--------------|-------------------------|-----------------|
| A1 | Pink | Pink |
| A2 | Light Blue | Light Blue |
| B | Purple | Purple |
| C | Yellow | Yellow |

**** Class flags/streamers shall be displayed from a boat's backstay while racing.**

8. Friday DISTANCE COURSES

8.1 The Distance Race course options for all Classes to be sailed Friday will be as per **S.I. Appendix**

A.

9. Saturday / Sunday COURSES

9.1 PHRF "A1, A2, B, & C" Courses to be sailed Saturday and Sunday will be as per **S.I. Appendix S**

9.2 Two weather marks will be used. The short mark will be set approx. 0.25 nm below the long mark.

9.3 A Leeward Gate may be used.

- The gate will be to weather of the Start Line.
- The angle of the gate may be adjusted at any time without signal.
- Should only one leeward mark be in place, boats shall round it to PORT.

9.4 Courses to be sailed will be displayed from the RC Signal Boat prior to Warning as shown below:

- Top line = Fleets racing
- Second line = Course each fleet will race
- Third line = Magnetic bearing & distance to the long weather mark.
- The short weather mark will be downwind of the long weather mark.

9.5

Example ONLY:

| A1 | A2 | B | C |
|--------------------------|------------|------------|-----------|
| WL4 | WL4 | W4 | W4 |
| 300 1.1 | | 0.9 | |

**** Refer to Appendix S for descriptions and course diagram**

10. MARKS

10.1 Marks will be orange inflatables

10.2 New marks, as provided in Instruction 14.1, will be yellow inflatables. If a new mark is subsequently changed the mark color will sequence back to orange, and continue to cycling in this fashion

10.3 The Starting Mark will be a yellow inflatable and the Finishing Mark will be an orange inflatable.

11. CHECK-IN

11.1 Prior to the Warning Signal for her first race of each day, each boat shall pass by the stern of the RC Signal Boat and hail her name and/or sail number until acknowledged by the RC

12. THE START

12.1 Races will be started in accordance with RRS 26 as modified in Instruction 12.2 below.

12.2 Approximately one (1) minute prior to the beginning of a starting sequence, the RC will make an Attention Signal consisting of a series of short sounds. This is not a timed signal.

12.3 Boats whose warning signal has not been made shall avoid the starting area.

Ver 1

- 12.4 Friday Distance Race – The start line will be between a staff displaying an orange flag on the RC Signal boat on the starboard end and government mark Piankatank R. G "3" (FBYC "C").
- 12.5 Saturday / Sunday Buoy Races - The starting line will be between the staff displaying an orange flag on the RC Signal Boat at the starboard end of the line and an inflatable mark at the port end.
- 12.6 A boat starting more than five (5) minutes after her starting signal shall be scored Did Not Start (DNS) without a hearing. This changes RRS A4 and A5.

13. RECALLS

- 13.1 Individual recalls will be signaled in accordance with RRS 29.1. Additionally, the RC will attempt to hail premature starters via **VHF-72**.
- 13.2 Failure of this transmission to be made or received, promptness of the notification, or the position of a boat in the sequence of notifications, will not be grounds for granting redress. This changes RRS 60.1(b)

14. COURSE CHANGE AFTER START

- 14.1 To change the next leg of the course, the RC will set one change mark for all racers and remove the original marks as soon as practicable.
- 14.2 The direction of the change will be signaled in accordance with RRS 33(a)(2), i.e. a red pennant indicates the change is to PORT or a green pennant indicates it is to STARBOARD.

15. THE FINISH

- 15.1 Friday Distance Race – The finish line will be between a staff displaying a blue flag on the RC Signal Boat and government mark Q G 15 ft. 4M "5" (FBYC "A").
- 15.2 Saturday/Sunday Races - The finish line will be between the staff displaying a BLUE flag on the RC Boat and the finish mark.
- 15.3 Flag "A" displayed w/ no sound while boats are finishing means "No more racing today"

16. PENALTIES

- 16.1 RRS 44.3 (Scoring Penalty) will NOT apply.
- 16.2 If any boat collides with an RC boat and causes injury or serious damage on either vessel, her penalty is to retire immediately.

17. TIME LIMITS

- 17.1 The time limit for the Friday distance race is **3hrs** for the first boat in each fleet to sail the course and finish. Boats still racing but not finished within **1 hour** after the first boat in their fleet sails the course and finishes will be scored Time Limit Expired (TLE) without a hearing and scored one (1) point more than the number of boats who sailed the course and finished within the time limit. This changes RRS 35, A4 and A5.
- 17.2 For PHRF-Spinnaker, the time limit for the Saturday/Sunday races is **2hrs** for the first boat in each fleet to sail the course and finish. Boats still racing but not finished within **45 minutes** after the first boat in their fleet sails the course and finishes will be scored Time Limit Expired (TLE) without a hearing and scored one (1) point more than the number of boats who sailed the course and finished within the time limit. This changes RRS 35, A4 and A5.

- 17.3 To facilitate sailing additional races or to complete daily scoring in a timely manner, a boat still racing whose finishing position can be reasonably determined may be called in by the RC. Such boat will be scored as finished and placed in a finish position. If another race is to be run, such boat shall proceed to the starting area as expeditiously as possible.

18. RETIREMENTS A boat that retires from a race or goes in between races shall immediately notify the RC and be acknowledged before leaving the racing area. This may be done via **VHF-72**.

19. PROTESTS

- 19.1 A boat intending to protest another boat must so notify the Race Committee by hail or radio transmission (**VHF-72**) immediately after finishing or retiring and until acknowledged by the Race Committee. This notification must include the protested boat's name and/or sail number.
- 19.2 The protest period shall begin immediately when the Signal Boat returns to the dock and shall last for **60 minutes**. This protest time limit will be posted on the Official Notice Board located on the front porch of the main FBYC clubhouse. This changes RRS 61.3 and 62.2.
- 19.3 Protest forms will be available at the Official Notice Board and protests will be heard on the second floor of the main FBYC clubhouse. Protests received and time of hearing will be posted on the Notice Board/ Protest Drop Box located on the front porch of the Clubhouse within 15 minutes after the posted deadline. Protests will not start before the posted time but may start later. If parties are not present at the posted time, the hearing will start based upon the written protest form. A hearing may be held if a party or witness is not available.
- 19.4 If the RC posts a list of boats scored OCS or ZFP prior to the Protest Time Limit, a request for redress based on the posted list shall be made no more than **15 minutes** after Protest Time. This changes RRS 62.2.
- 19.5 A notice of protests filed and approximate hearing times will be posted within 15 minutes after the end of protest time. Such posting constitutes the notice for Race Committee or Protest Committee Protests required under RRS 61.1(b)
- 19.6 No party may request re-opening of a hearing. This changes RRS 66.
- 19.7 On Sunday, a request for redress from a jury decision must be delivered no later than 20 minutes after the decision was posted. This changes RRS 62.2(b).

20. SCORING

- 20.1 The regatta will be scored as per the Low Point Scoring System of RRS Appendix A, except that there shall be no throw-outs. A boat's score shall be the total of all her scores on Saturday & Sunday. This changes RRS A2.
- 20.2 The completion of at least one race in a class constitutes a regatta.
- 20.3 Time on time scoring shall be used.
- 20.4 The Friday Distance Race will be scored separately from the races held Saturday and Sunday and will not be counted towards the Brent Halsey, Jr. Memorial Trophy.
- 20.5 The Friday Distance Race will be scored using the 'Random Course' ratings.

21. HAUL-OUT RESTRICTION Boats shall remain in the water throughout the regatta, unless hauled with prior written approval from the PRO.

22. CREW LIMITS

- 22.1 Class crew limits are in effect. There will be no weigh-in.
- 22.2 Crew substitutions are allowed in all classes.

23. DISCLAIMER OF LIABILITY

Sailing is an activity that carries with it an inherent risk of damage and injury. Competitors participate in any race or regatta entirely at their own risk as instructed in RRS, Rule 3, Decision to Race. The race organizers include the Organizing Authority, The Fishing Bay Yacht Club, Race Committee, Protest Committee, sponsors, volunteers, or any other affiliated organization or official who will not be responsible for damage to any boat or other property or the injury to any competitor, including death, sustained as a result of practice for or participation in this event during shore side or on-the-water activities. By participating in this event, each competitor agrees to release the race organizers from any and all liability associated with such competitor's participation in this event to the fullest extent permitted by law.

24. AWARDS

- 24.1 Overall results will be given for first, second, and third in each fleet, with all races considered separately.
- 24.2 The Brent Halsey Jr. Memorial Trophy will be presented to the Spin class winner based on the following:

- *Halsey Trophy Score* = (Class Score/Average Starters) times (Minimum Races/Class Races)

Class Score = total low point score of Class Winner as per S.I.s

Average Starters = average number of boats that started in that class

Minimum Races = number of races completed by class with fewest races completed

Class Races = number of races completed in class being scored

- * Eligible class winners shall be the winners of classes that have been given a separate start and have had at least four (4) boats starting in every race.
 - * The intended purpose of the formula is to identify the class winner who has been most competitive as measured by the degree to which it has consistently been at the top of his class and the number of boats against which he has competed.
- 24.3 Sportsmanship Award. This award shall be given to a boat, individual, or other entity whose crew exhibits the highest degree of sportsmanship and spirit of Corinthian competition during the regatta

25. CONTACTS:

- | | | | |
|---------------------|-----------------|----------------|--|
| - Event Chairman | Glenn Doncaster | (804) 337-3694 | g.doncaster@citadelcontractors.com |
| - PRO (East Course) | Lud Kimbrough | (804) 514-5858 | lud.kimbrough@gmail.com |
| - PRO (West Course) | Donna Alvis | (804) 370-6669 | donnaalvis@comcast.net |

STINGRAY POINT REGATTA
APPENDIX A
DISTANCE COURSES
FOR FRIDAY'S Distance Race

COURSE A – APPROX. 17 NM

| Marks of Course | Leave to |
|---|-----------------|
| Starting Line | |
| Piankatank R. G "1R" FI G 6s (FBYC "G") | Port |
| Rappahannock R "6R" FI R 4s (FBYC "K") | Port |
| Piankatank G "1P" FI G 2.5s (FBYC "E") | Starboard |
| Finish Line | |

COURSE B – APPROX. 14 NM

| Marks of Course | Leave to |
|--|-----------------|
| Starting Line | |
| Piankatank G "1P" FI G 2.5s (FBYC "E") | Starboard |
| Chesapeake GC "41A" (FBYC "L") | Starboard |
| Piankatank R. G "3" FI G 4s (FBYC "C") | Port |
| Finish Line | |

COURSE C – APPROX. 12 NM

| Marks of Course | Leave to |
|---|-----------------|
| Starting Line | |
| Rappahannock N"2R" (FBYC "H") | Starboard |
| Piankatank R. G "1R" FI G 6s (FBYC "G") | Starboard |
| Piankatank R. G "3" FI G 4s (FBYC "C") | Port |
| Finish Line | |

COURSE D – APPROX. 10 NM

| Marks of Course | Leave to |
|---|-----------------|
| Starting Line | |
| Piankatank G "1P" FI G 2.5s (FBYC "E") | Starboard |
| Piankatank R. G "1R" FI G 6s (FBYC "G") | Starboard |
| Piankatank R. G "3" FI G 4s (FBYC "C") | Port |
| Finish Line | |

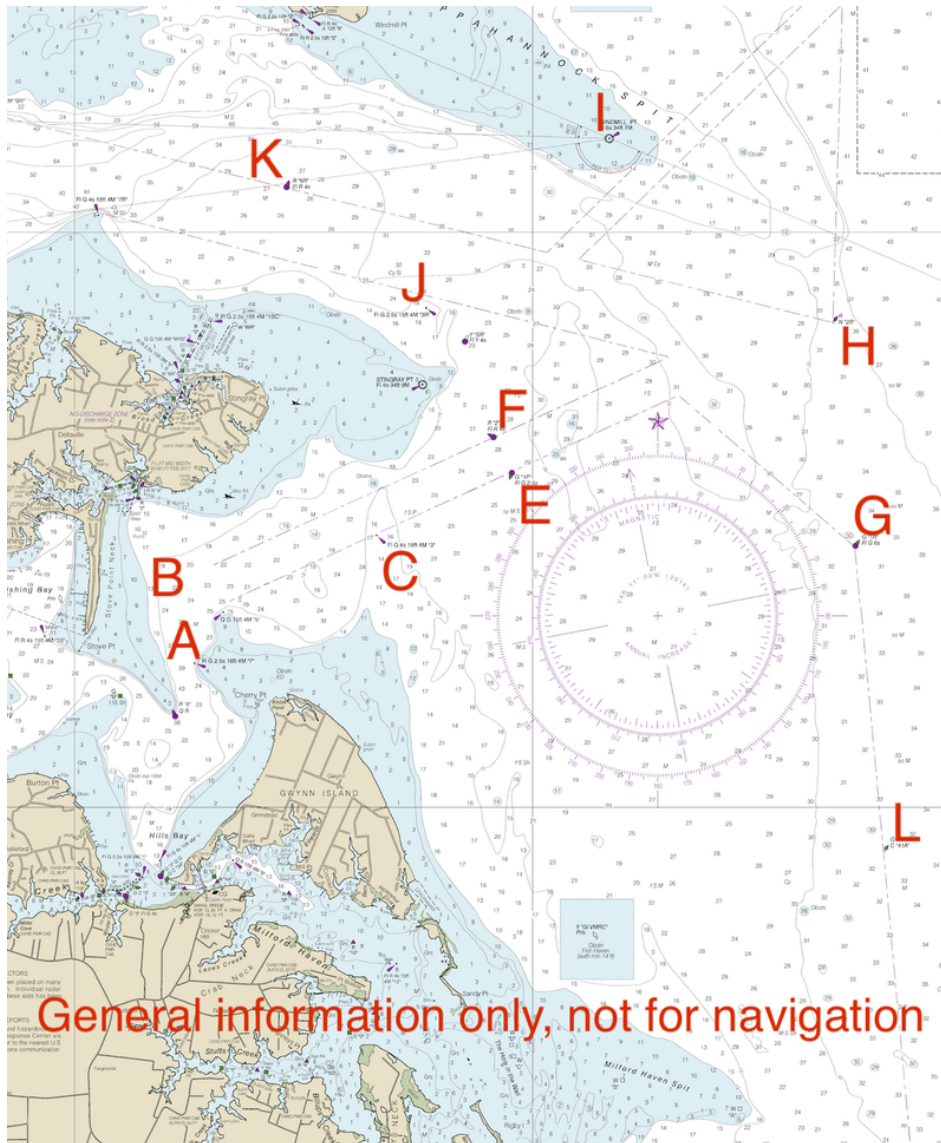
COURSE E – APPROX. 8 NM

| Marks of Course | Leave to |
|---|-----------------|
| Starting Line | |
| Piankatank R. R "2" FI R 4s (FBYC "F") | Port |
| Piankatank R. G "3R" FI G 2.5s (FBYC "J") | Starboard |
| Piankatank R. R "2" FI R 4s (FBYC "F") | Starboard |
| Piankatank R. G "3" FI G 4s (FBYC "C") | Port |
| Finish Line | |

**** The course cannot be changed, but may be shortened at any rounding mark.**

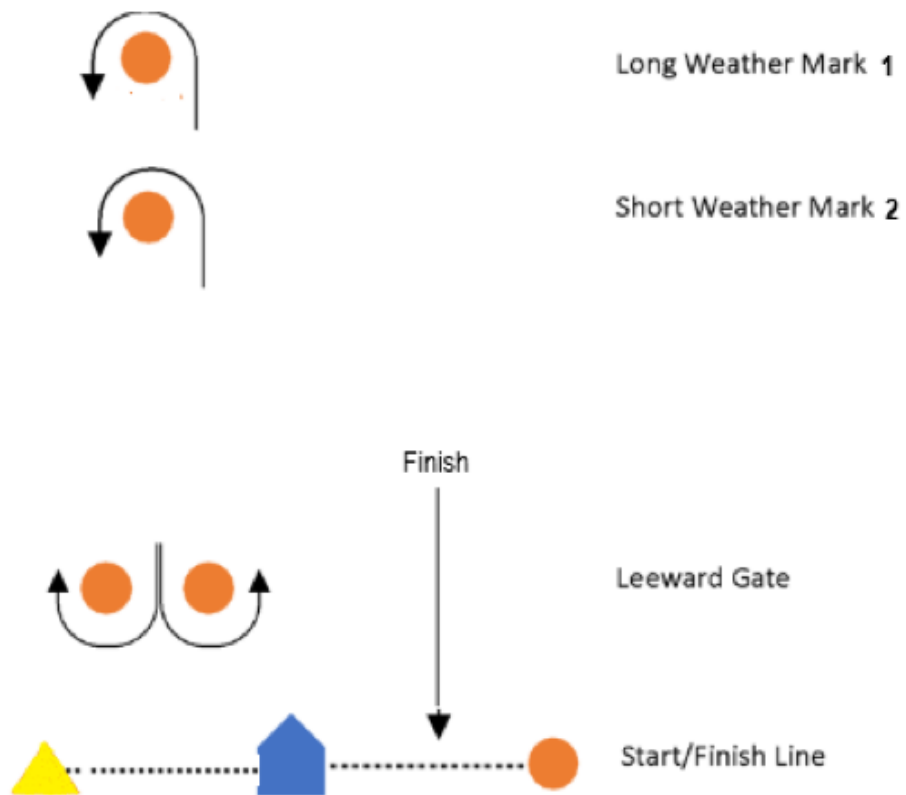
Marks of the Distance Courses

| Letter | Location | Latitude | Long. | Label on Chart |
|--------|--------------------|-----------|-----------|------------------------|
| A | Piankatank R. | 37 31.698 | 76 18.376 | Q G 15ft 4M "5" |
| C | Piankatank R. | 37 32.367 | 76 16.703 | FI G 4s 19ft 4M "3" |
| E | Piankatank R. | 37 32.908 | 76 15.229 | G "1P" FI G 2.5s |
| F | Piankatank R | 37 33.224 | 76.15.421 | R "2" FI R 4s |
| G | Rappahannock R | 37 32.271 | 76 11.481 | G "1R" FI G 6s |
| H | Rappahannock R | 37 34.221 | 76 11.728 | R N "2R" |
| I | Windmill Pt. Light | 37 35.815 | 76 14.164 | FI 6s 34ft 7M |
| J | Rappahannock R | 37 34.342 | 76 16.163 | FI G 2.5s 15ft 4M "3R" |
| K | Rappahannock R | 37 35.398 | 76 17.676 | R "6R" FI R 4s |
| L | Chesapeake Bay | 37 29.613 | 76 11.185 | G C "41A" |



STINGRAY POINT REGATTA
APPENDIX S
PHRF A, B, C Classes
(SATURDAY/SUNDAY COURSES)

**The course to be sailed will be posted on RC Signal Boat prior to Warning



Course Designations will be:

WL4 = Start - Mark 1 - Gate - Mark 1 - Finish (4 legs)

W4 = Start - Mark 2 - Gate - Mark 2 - Finish (4 legs)

WL2 = Start - Mark 1 - Finish (2 legs)

W2 = Start - Mark 2 - Finish (2 legs)

** All marks (except the Gate) shall be left to PORT

** The Gate marks are NOT marks of the course for the WL2 and W2 course.

** If the course is changed after the start, per Instruction 14.1, only one change mark will be set.

All boats shall use the one change mark.