



Pensacola Yacht Club  
2023 Mardi Gras Regatta  
Saturday - February 25, 2023  
**SUPPLEMENTAL SAILING INSTRUCTIONS**

**5. SCHEDULE OF RACES**

**5.1** Date of racing: Saturday, February 25

Two races are planned; one race constitutes a completed regatta.

Scheduled time of the warning signal for the first race of the day is 1255

**6. CLASS FLAGS**

**6.1** Class flags will be:

Spinnaker Pink

Non-Spinnaker Green

One Design Purple

**8. THE COURSES**

**8.1** The courses sailed will be harbor courses as described in Attachment A.

**9. MARKS**

**9.1** The starting marks will be the signal vessel with an orange flag and an orange tetrahedron. Note that the signal vessel for this event will be other than PYC "About Time". To be reviewed during the skippers meeting.

The finishing marks will be the same as the starting marks.

**9.2** The harbor course marks are shown on the chart in Attachment B.

**15. TIME LIMITS AND TARGET TIMES**

**15.1** Time limits and target times are as follows:

Mark 1 45 minutes – Time limit for the first boat to pass Mark 1.

Race Time Limit 2½ hours – Time limit for the first boat to sail the course and finish.

Finishing Window 55 minutes – Time limit for boats to finish after the first boat in the class sails the course and finishes.

**15.2** If no boat has passed Mark 1 within the Mark 1 time limit, the race shall be abandoned.

Failure to meet the target time will not be grounds for redress. This changes RRS 62.1(a).

**15.3** If no boat has sailed the course and finished within the race time limit, the race shall be abandoned. Failure to meet the target time will not be grounds for redress. This changes RRS 62.1(a).

**15.4** Boats failing to finish within the finishing window shall be scored DNF (did not finish) without a hearing. This changes RRS 35, A4, and A5.

15.5 In order to avoid abandonment, The race course may be shortened to a mark of the course with the appropriate flag and signal per the racing rules of sailing.

## **17. SCORING**

**17.1** The Low Point Scoring System, Appendix A4 (RRS), will apply.

## **21. PRIZES**

**21.1** Prizes for each division will be awarded for the regatta based as follows:

3 or more boats: 1<sup>st</sup> – 3<sup>rd</sup> place.

**21.2** Prize for boat and/or crew with best presentation of Mardi Gras spirit. PYC does not condone throwing beads or similar into the water. Leave that for land.

**21.3** All prizes will be awarded at the PYC Blue Bar following racing.

# ATTACHMENT A

## PENSACOLA BAY HARBOR COURSES USING GOVERNMENT MARKS

### Course # 1 (North Long)

START: Signal Vessel

A (starboard) Approx. 1.75 km

C (starboard) 1.91 km

H (port) 1.96 km

K (port) 2.10 km

I (port) 1.73 km

C (port) 2.33 km

FINISH: Signal Vessel Approx. 2.75 km

Approx. Total: 14.53 km.

### Course # 2 (North Short)

START: Signal Vessel

A (starboard) Approx. 1.75 km

D (starboard) 1.08 km

I (port) 1.50 km

J (port) 0.81 km

I (starboard) 0.81 km

D (port) 1.50 km

FINISH: Signal Vessel Approx. 2.25 km

Approx. Total: 9.70 km.

### Course # 3 (South Long)

START: Signal Vessel

K (port) Approx. 2.60 km

M (port) 3.88 km

P (starboard) 4.62 km

J (port) 1.90 km

FINISH: Signal Vessel Approx. 1.25 km

Approx. Total: 14.25 km.

### Course # 4 (South Short)

START: Signal Vessel

K (port) Approx. 2.60 km

N (starboard) 0.82 km

R (starboard) 2.44 km

J (port) 2.76 km

FINISH: Signal Vessel Approx. 1.25 km

Approx. Total: 9.87 km.

Course # 5 (East Long)

START: Signal Vessel

L (port)        Approx. 3.75 km

M (port)        0.83 km

N (starboard) 3.39 km

H (starboard) 2.29 km

D (port)        1.28 km

J (port)        2.30 km

FINISH: Signal Vessel Approx. 1.50 km

Approx. Total: 15.34 km.

Course # 6 (East Short)

START: Signal Vessel

I (port)        Approx. 0.75 km

C (port)        2.33 km

I (port)        2.33 km

K (port)        1.73 km

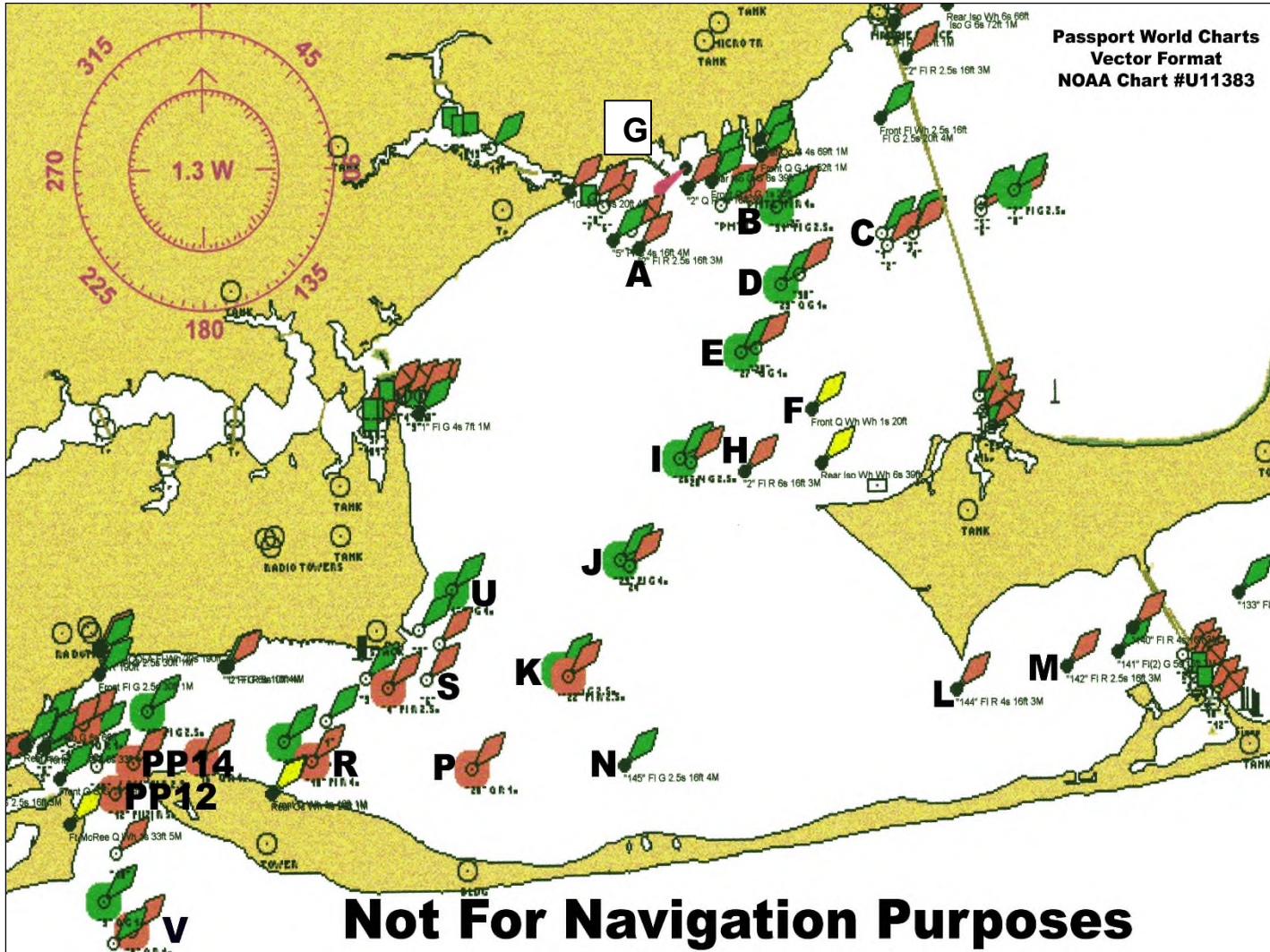
J (port)        0.93 km

FINISH: Signal Vessel Approx. 1.50 km

Approx. Total: 9.57 km.

# Attachment B

Refer to NOAA Nautical Chart #11378 for details



Race Mark Letter	Chart Label	Description	Latitude (N)	Longitude (W)
A	FI R 2.5s 17ft 3M "2"	Beginning of Bayou Chico Channel	30 ° 23.531 '´	87 ° 13.729 '´
B	G "31" FI G 2.5s	Close to Municipal Auditorium	30 ° 23.759 '´	87 ° 12.574 '´
C	G C "1"	Three Mile Bridge Channel Marker	30 ° 23.557 '´	87 ° 11.658 '´
D	G "29" Q G	Bay Channel "29"	30 ° 23.211 '´	87 ° 12.551 '´
E	G "27" Q G	Bay Channel "27"	30 ° 22.726 '´	87 ° 12.878 '´
F	Q 20ft	Forward Range Marker for East Channel	30 ° 22.383 '´	87 ° 12.233 '´
G	FI 2.5s 18 ft	Bay Channel Range Marker at NW end 3 Mile Bridge	30 ° 24.357 '´	87 ° 11.351 '´
H	FI R 6s 17ft 3M "2"	Fair Point	30 ° 21.952 '´	87 ° 12.819 '´
I	G "25" FI G 2.5s	Bay Channel "25"	30 ° 21.989 '´	87 ° 13.456 '´
J	G "23" FI G 4s	Bay Channel "23"	30 ° 21.282 '´	87 ° 13.979 '´
K	G "21" FI G 2.5s	Bay Channel "21"	30 ° 20.509 '´	87 ° 14.537 '´
L	FI R 4s 17 ft 3M "144"	Deer Point	30 ° 20.397 '´	87 ° 10.947 '´
M	FI R 2.5s 17ft 3M "142"	Between Deer Point and Pensacola Beach Bridge	30 ° 20.549 '´	87 ° 10.013 '´
N	FI G 2.5s 17ft 4M "145"	Pensacola Bay off Santa Rosa Island	30 ° 19.893 '´	87 ° 13.891 '´
P	R "20" FI R 4s BELL	Pensacola Bay off Santa Rosa Island	30 ° 19.821 '´	87 ° 15.305 '´
R	R "18" FI R 4s	Pensacola Bay off Santa Rosa Island	30 ° 19.888 '´	87 ° 16.692 '´
S	R N "6"	Turning Basin East of Naval Air Station Dock	30 ° 20.450 '´	87 ° 15.719 '´
U	FI G 4s "1"	Approx. 0.6 nm northeast of Naval Air Station Docks	30 ° 21.075 '´	87 ° 15.460 '´
V	R "8" Q R BELL	Caucus Channel (gulf entry channel) Buoy 8	30 ° 18.715 '´	87 ° 18.300 '´
X	G "1" FI G 2.5 s GONG	Pensacola Pass Sea Buoy	30 ° 16.262 '´	87 ° 17.546 '´
PP12	R "12" FI (2) R 5s	Pensacola Pass "12"	30 ° 19.685 '´	87 ° 18.417 '´
PP14	R "14" FI R 2.5s	Pensacola Pass "14"	30 ° 19.891 '´	87 ° 18.280 '´

The above positions are approximate. While every care has been taken in the preparation of the above list, no Request for Redress and/or liability can be accepted for any loss or damage arising from any error or inaccuracy. Lat/Long data source NOAA ENC#11383, 07AUG03 update.

These marks and characteristics contained herein were current 2/06/03. "The Notice to Mariners" should be referred to as any of these marks could be subject to change in approximate position and characteristics. The individual Race Committees shall endeavor to note and post any changes that may affect this table.

**Ultimately, it is the responsibility of the competitors to navigate the given course properly.**