

GREENWICH BAY ON WATER EMERGENCY PROCEDURE

Hail “US Coast Guard Station Castle Hill”
on **VHF Ch. 16**

They will ask the following 5 questions:

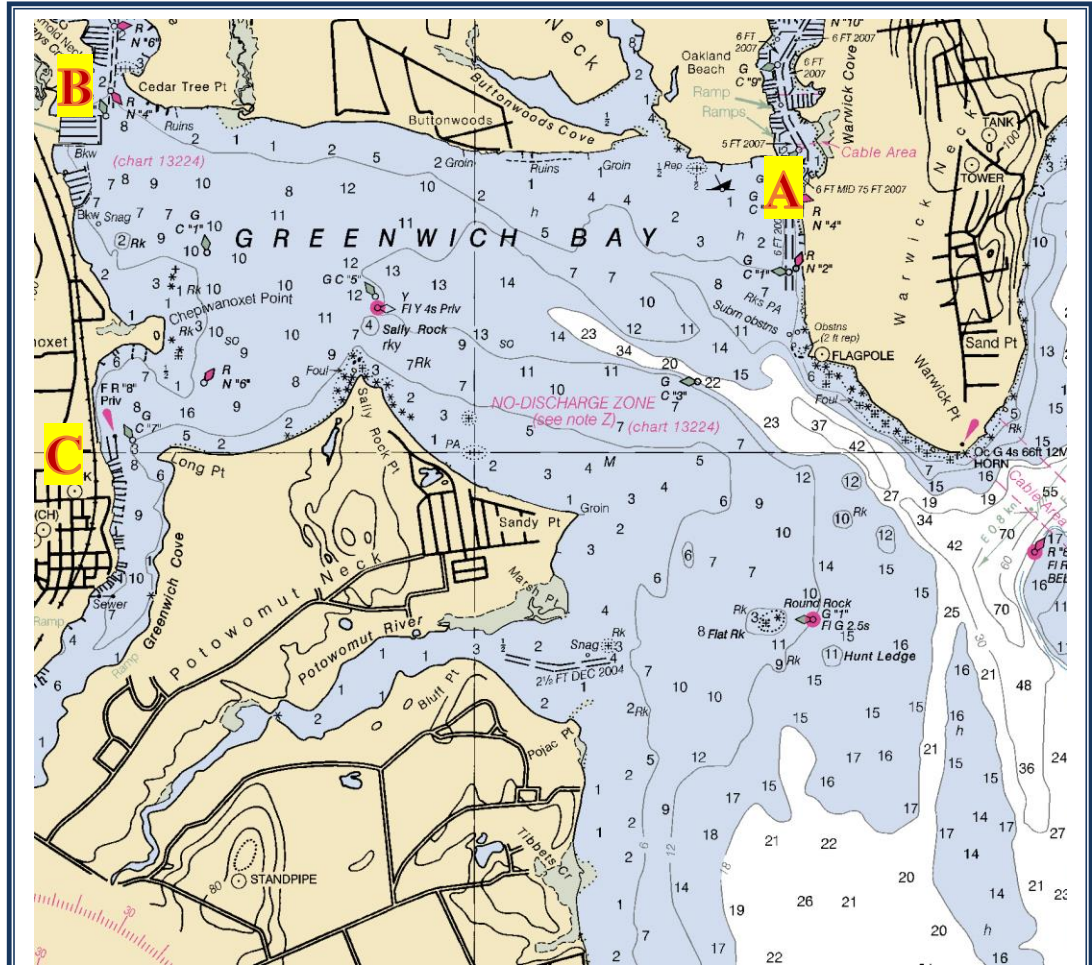
1. Position (lat/long and/or geographic)
2. # of people involved
3. Nature of distress
4. Description of vessel or person
5. Whether participants are wearing PFDs

USCG will instruct you to the best drop off location and may ask you to switch VHF channels. **THEY** will coordinate with the local Fire Department to send an ambulance to that location.

Warwick and East Greenwich Harbormaster will be monitoring VHF 16 and will follow conversation if channel is switched.

USCG and Fire Department will send boats. Be sure to let them know if you are moving.

Call 911 from your cell phone. Let them know you are in touch with Coast Guard.



FIRST RESPONDERS MAY DIRECT YOU TO ONE OF THE FOLLOWING LOCATIONS DEPENDING WHERE YOU ARE ON GREENWICH BAY:

- A. Shell Fishing Dock at the Entrance to Warwick Cove
- B. Apponaug Harbor Marina Pump Out Dock, Entrance to Apponaug Cove
- C. Prime Marina (formerly Norton's), Entrance to Greenwich Cove