

# SAILING INSTRUCTIONS

## The 19<sup>th</sup> Annual Lido 14 Fleet 2 Invitational

### Saturday, April 1 2023

**RULES:** The regatta will be governed by the rules as defined in the RRS 2021-2024.

**SKIPPER'S MEETING:** There will be no skipper's meeting.

**NOTICES TO COMPETITORS:** Notices will be made verbally on the water.

**SCHEDULE OF RACES:** Five (5) races are scheduled. The Race committee may elect to run fewer races. The first race will start at 1300 hours. Subsequent races will be started as soon as is practical.

**RACING AREA:** Racing will be inside the Marina del Rey harbor between the "No Sail" lanes of the outer entrance channel.

**CHECK IN:** At least 5 minutes before the first start, hail committee boat. Provide intention to race by stating sail number.

**MARKS:** Marks will be flags, inflatable cylinders or race buoys. Mark positions are approximate and may be adjusted by the RC.

**OBSTRUCTIONS:** The "No Sail" buoys designate the lane for powering in and out of the harbor on each side of the entrance channel. The line between these buoys is an **obstruction** at all times. **The penalty for crossing the obstruction described above, or a restricted start/finish line, shall be a Two-Turns Penalty** that complies with RRS 44.2

**PENALTIES:** Appendix V1 is in force (**One-turn penalty** except in a rounding zone or obstructions –see above)

**ORDER OF STARTS:** The RC will determine the order of starts on the water and may change the order at its discretion. The RC may start multiple classes together.

#### CLASS FLAGS:

C-15	C-15 Flag
Lido A	Lido Flag
Snipe	Snipe Flag

**STARTING SYSTEM:** Appendix S "Sound Signal Starting System" will be used. The **Start Signal** for each class will serve as the **Warning Signal** for the next class. (This is a rolling 3-minute start.)

**COURSES:** The selected course for each race will be indicated by a pennant flown during the start. The course may change for each fleet. Courses will be selected from the South Coast Corinthian Yacht Club #9 Sunstroke Series Course Chart below (unchanged from 2020 and 2021).

**PROTESTS:** Competitors wishing to file a protest shall notify the Race Committee of their intent to file as soon as possible. Forms must be filed within one hour of the RC's return to the Club. Appendix T Section C "Expedited Hearings" is in force.

**SCORING:** Scoring will be based per class, C-15, Lido, Laser and Catch-All.

A high point system will be used for scoring.

A class will require four or more entrants.

Typically classes will get their own start, but this may be changed on the racecourse by the PRO by flags or verbal hail.

The number of boats racing (in a class) will equal the number of class boats starting in at least one race. The first boat receives points equal to the number of boats racing, the second boat receives the number of boats racing less one, the third boat equals the number of boats racing less two ... Boats that DNS, DNF or DSQ will receive one point for that specific race.

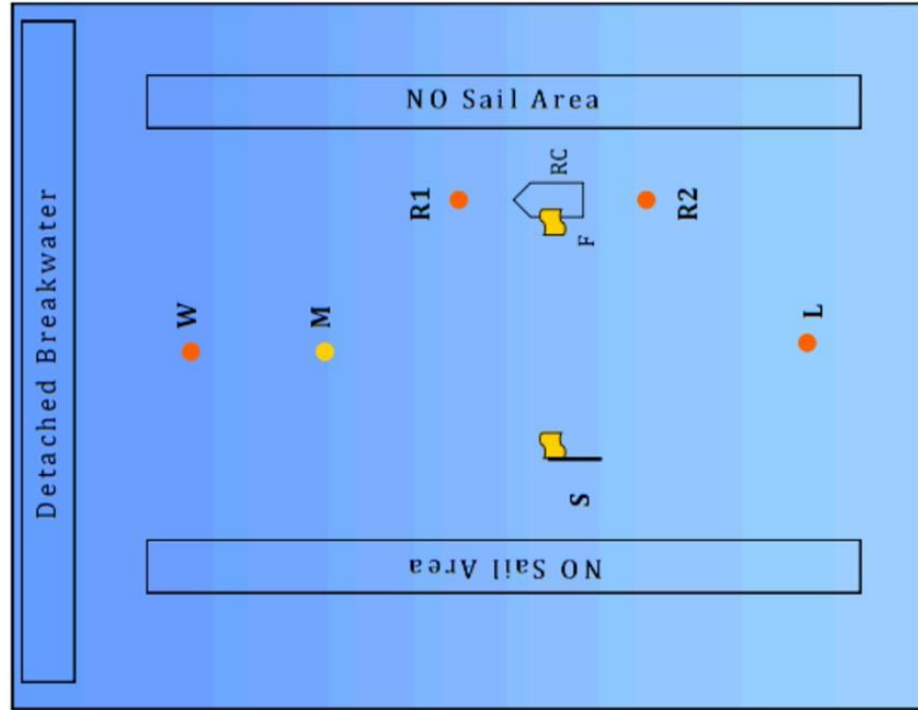
Daily score will include one throw out when four or more races are held. Daily winner will have the highest number of points. Scoring tie breaker will be based on the boat beating the other the most that day, if that doesn't resolve then boat that places best in the first race.

Sponsored By:



## Sunstroke Series Course Chart #9

#	Description		
1	Start > W > Finish		
2	Start > W > L > Finish		
21	Start > M > L > Finish		
2D	Start > L > W > Finish		
3	Start > W > L > M > Finish		
4	Start > W > L > M > L > Finish		
5	Start > Ws > R1s > S > L > Finish		
51	Start > Ms > R1s > S > L > Finish		
6	Start > W > S > R2s > L > Finish		
61	Start > M > S > R2s > L > Finish		
7	Start > W > M > W > Finish		
8	Start > W > R1 > W > Finish		
9	Start > W > S > W > Finish		



R1, R2, W, M and L are red balls. S is a orange flag on a staff. All marks are to be left to port unless designated by a lower case "s". F is a orange flag on the committee boat.  
Start line is restricted for course 2, 21, 2D, 3, and 4