



2023 Spring Series

March 25, April 1, & April 29, 2023

The Houston Yacht Club

3620 Miramar Drive, Shoreacres, TX 77571

(281) 471-1255

AMENDMENT to SAILING INSTRUCTIONS

Preamble The notation '[NP]' in a rule means that a boat may not protest another boat for breaking that rule. This changes RRS 60.1(a).

The following section has been corrected by removing the "Race Area" column. There is only **ONE Race Area** which is **North** of the Bayport Shipping Channel and within 1 nm of the HYC Harbor.

See: **SI ATTACHMENT A: RACING AREA**

6. CLASS FLAGS

Class	Warning/Start Flag
PHRF, Non-Spin	Pink Flag
PHRF, Spinnaker	Green Flag
J-24	J-24 Class Flag: Lt. Blue w/Blue
J-22	J-22 Class Flag: Orange w/Blue
Ensign	Ensign Class Flag: White w/Red
Sunfish	Purple Flag

The following section has been corrected by adding "Attachment B and Attachment C" in SI 9.1. In addition, subsections SI 9.5 and SI 9.6 have been added for clarity.

9. COURSES

- 9.1 The diagrams in Attachment B and Attachment C show the courses to be sailed.
- 9.2 No later than the warning signal, the Race Committee Signal boat will display a numeral pennant indicating the number of laps to be sailed.
- 9.3 No later than the warning signal, the race committee signal vessel will display the approximate compass bearing of the first leg.
- 9.4 All marks shall be rounded leaving the mark to port.
- 9.5 One-Design Classes are sailing the "L" courses, designated L1, L2, or L3 (See attachment B).
- 9.6 All PHRF classes are sailing the "LW" courses, designated LW1, LW2, or LW3 (See attachment C).

The following section has been appended, by adding subsection SI 14.3

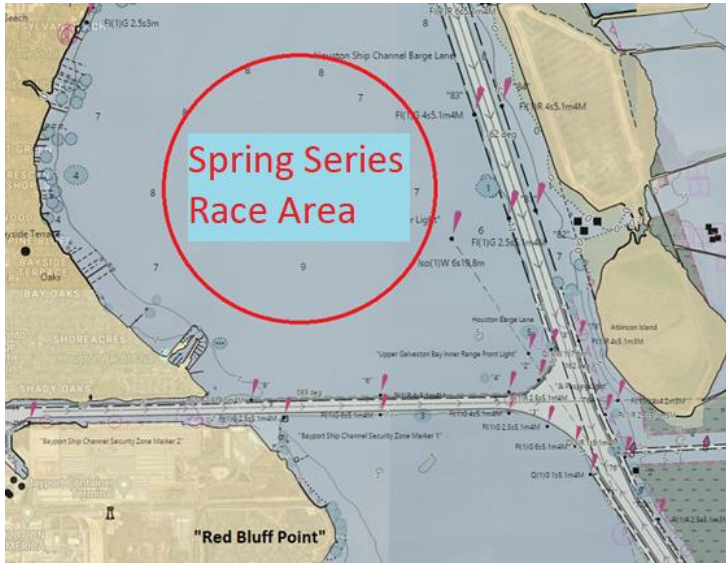
14. THE FINISH

- 14.1 The Finish Line will be a staff displaying a blue flag on the Race Committee boat and Mark S (the Starting Pin). All finishes are on the port side of the Race Committee boat.
- 14.2 If the race committee is absent when a boat finishes, she shall report her finishing time, and her position in relation to nearby boats, to the race committee at the first reasonable opportunity.
- 14.3 Boats in the PHRF fleets and sailing the LW courses will finish to windward, (See Attachment C).

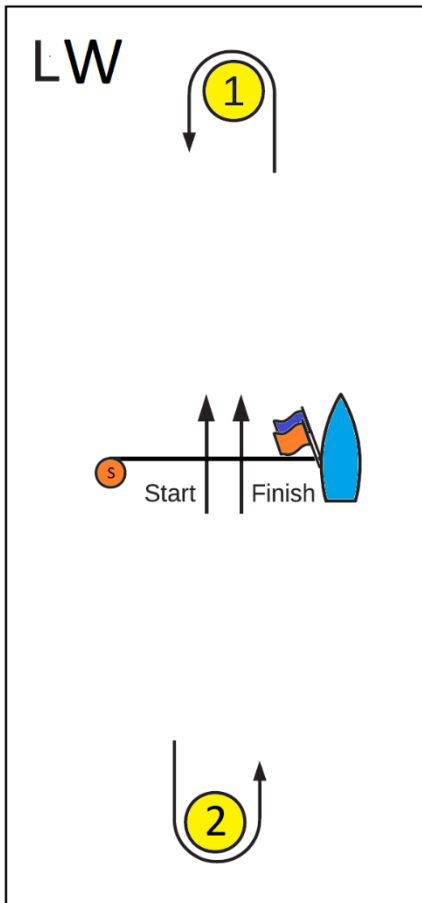
AMENDMENT to SAILING INSTRUCTIONS

The photo in Attachment A has been updated to the current chart, with correct channel marker locations.

ATTACHMENT A: RACING AREA



The diagram in ATTACMENT C has been updated with the correct direction shown for the Finish. I.e. all PHRF classes are to cross the finish line in the WINDWARD direction.



LW Courses finish in the windward direction, with the finish pin on the port side and the committee boat on the starboard side.