



2023 Fishing Bay Yacht Club Junior Regatta, June 24 & 25 Sailing Instructions

The notation “[DP]” in this SI means that the penalty for a breach of the rule may, at the discretion of the Protest Committee, be less than disqualification.

Schedule of Events

Saturday, June 24, 2023

0800 – Registration Check-in, Check notice board

1000 – Skipper’s Meeting

1030 - Class Launches

1130 - First Warning Signal Followed by as many as seven-(7) races, as conditions permit.

Sunday, June 25, 2022

0800 - Check notice board

1000 - First Warning Signal, followed by as many as five races, as conditions permit.

1500 - No Warning Signal after 1500

Awards will be given to winners on site as soon as possible after the last race..

1. Rules

- 1.1. The Regatta will be governed by these sailing instructions and by the Racing Rules of Sailing except as amended by these sailing instructions.
- 1.2. If a conflict, these Sailing Instructions take precedence over the NOR.
- 1.3. For advertising purposes, the Regatta is designated Category A in accordance with ISAF Regulation 20.

2. Entries

- 2.1. Eligible competitors shall be Junior members of a recognized yacht club or sailing association with an Optimist, ILCA 6 or C420. CBYRA junior age eligibility limits apply.
- 2.2. Entry registration forms must be completed online via the Regatta Network site only prior to Skippers Meeting.

3. Safety, Check-In and Environmental Awareness

- 3.1. A boat shall carry all equipment required by her class rules.
- 3.2. USCG-approved PFDs shall be worn by each sailor at all times.
- 3.3. Before the warning signal of a boat’s first race each day, each boat will sail on starboard tack past the stern of the designated race committee boat displaying flag “L” and hail their sail number. [DP].
- 3.4. A boat that retires for the day or from a race before finishing, shall notify the RC as soon as possible.
- 3.5. A Boat requesting assistance should attempt to signal by waving an extended arm.
- 3.6. Boats observed purposefully discharging trash into the water will be subject to sanctions up to and including disqualification from all races. [DP]

4. Notices to Competitors

Notices to competitors will be posted on the Official Notice Board located inside the FBYC Clubhouse on the screen porch or in front of the FBYC Club house and on Regatta Network.

5. Changes to Sailing Instructions

Any change to these sailing instructions will be posted on the Official Notice Board no less than 2 hours before the first warning signal on the day it will take effect.

6. Signals Made Ashore

- 6.1. Signals made ashore will be displayed on the flagpole on the Fishing Bay Dock.
- 6.2. Flag AP hoisted with two sound signals means “The race is postponed.” The warning signal will be made not less than 45 minutes after AP is lowered (with one sound). This changes RRS – Race Signals – “AP”.

7. Schedule of Races

Saturday, June 24:

1030 - Launch of classes

1130 – First Warning Signal

The Warning Signal for subsequent races shall follow.

Sunday, June 25:

0900 - Class Launches

1000 - First Warning Signal

Subsequent races to follow.

1500 - No races shall be started after 1500.

8. Class Designation

8.1. Class flags used in the starting sequence in 12.1 of these SI's will be designated below [or in an Addendum to these Sailing Instructions].

ILCA	ILCA Logo over White Flag
C420	C420 Logo over White Flag
Opti (Red)	Opti Logo over White Flag red ribbon provided
Opti (White)	Opti Logo over White Flag white ribbon provided
Opti (Blue)	Opti Logo over White Flag blue ribbon provided
Opti (Green)	Green Flag Opti green ribbon provided

8.2. Optimists will be divided into Red, White, Blue and Green Fleets, as defined by USODA. Red White and Blue Fleets will start together on one course. The Green Fleet will have a separate course area located closer to the club house.

9. Racing Area

The racing areas will be in the Fishing Bay area and the Piankatank River, as shown in the chart in Appendix A, indicated by circles "A", "B" and "C" on the chartlet.

10. The Course

- 10.1. The Racing Areas, respectively will be ILCA & 420C– Area C; Opti Red, White & Blue – Area B; Opti Green - Area A
- 10.2. The diagrams in Appendix B show the courses including course designation, course diagrams with approximate angles between the legs, the order in which the marks are to be passed and the side on which each mark is to be left.
- 10.3. The course designation for each class will be displayed on the course board on the starboard side of the race committee boat for each respective class in that Racing Area.

11. Marks

- 11.1. The rounding marks for all classes will be inflatable marks.
- 11.2. Change marks, as provided in RRS 33, (Changing Course After the Start) will be inflatable marks of a different color from the original or with an added contrasting color band.
- 11.3. The starting and finishing marks will be inflatable marks for the respective race courses.

12. The Start

- 12.1. RRS Rule 26 (Warning 5 minutes prior to start), will be used for all classes with exception of the Opti Green Fleet which will use a three-minute sound start, RRS Appendix U – Audible-Signal Racing System.
- 12.2. The starting line will be between the staff displaying an orange flag on the RC signal boat at the starboard end and the course side of the port end inflatable mark or the staff displaying an orange flag on a race committee boat at the port end of the line.
- 12.3. Boats starting more than five (5) minutes after its class start will be scored DNS without a hearing. This changes RRS A5.1 and A5.2.

13. Recalls

The Race Committee will attempt to hail OCS boats after the starting signal. Timeliness, lack of a hail, order of hailing or failure to hear a hail shall not be grounds for granting redress. This changes RRS 62.1 (a).

14. Change of Course After the Start

A change of course after the start will be signaled before the leading boat has begun the leg, although the new mark may not then be in position. Any mark to be rounded after rounding the new mark may be relocated without further signaling to maintain the original course configuration. When in a subsequent change, a new mark is replaced, it will be replaced by the original mark

15. The Finish

- 15.1. The finish line will be between the staff displaying a blue flag on a RC boat and on the course side of an inflatable mark or the staff displaying a blue flag on a race committee boat at the port end of the line.
- 15.2. Immediately after downwind finishes, all boats are requested to trim mainsails to display sail numbers to the race committee for identification. [DP]

16. Time Limit

- 16.1. The time limit will be seventy-five (75) minutes from class start to first boat to finish.
- 16.2. Boats failing to finish within fifteen (15) minutes after the first boat finishes will be scored "Did Not Finish." This changes RRS 35. A5.1, A5.2 and A10

17. Protests

- 17.1. A boat intending to protest another boat must so notify the Race Committee by hail after finishing and before communicating with coaches or spectators and must be acknowledged by the Race Committee. Boats are to sail to the non-course side of the Finish Boat and report to the finish boat. This notification must include the sail number of the boat being protested.
- 17.2. The Race Committee will post acknowledged protests within the Protest Time Limit on the Official Notice Board.
- 17.3. Protests shall be written on forms available from the at the Protest Desk (Registration Desk), completed and delivered to the Protest desk (Registration Desk) within the Protest Time Limit.
- 17.4. The Protest Time Limit will begin when the Race Committee boat docks and expires 60 minutes later. Protest Time Limit will be posted on the Official Notice Board.
- 17.5. The Protest Committee will hear protests in approximately the order of receipt.
- 17.6. A boat may not protest a boat for an alleged breach of RRS 75.2 (Eligibility) with respect to ISAF Regulation 19, nor for alleged breaches of sailing instructions 3 & 20.3 This changes Rule 60. [DP]

18. Scoring

- 18.1. The Low-Point scoring system, Appendix A, RRS, will apply.
- 18.2. If five or more races are sailed, each boat's worst score will be excluded.
- 18.3. Red, White and Blue Fleet Optimists will be scored separately by fleet and overall. Green Fleet will be scored separately.
- 18.4. One finished race constitutes a series.

19. Awards

Award(s) will be presented for all classes having at least 5 boats. Opti Green Fleet will receive participation mementos.

20. Support Boats

- 20.1. All support boats are welcome. All support boats are required to notify the Registration Desk of their intent to be near the course, as well as which boats they are supporting. By registering as a support boat, the operator(s) acknowledge their obligation to: 1) not interfere with any ongoing race; 2) to render aid to any sailors in distress, 3) to monitor the racecourse safety channel, (Channel 69), and; 4) to set the example in terms of safety and on-the-water decorum, including trash disposal.
- 20.2. On-the-water coaching for Green Fleet sailors is encouraged, subject to the obligations in section 20.1. Race-time coaching is only for sailors in a lower half position in the race being sailed.
- 20.3. Failure to adhere to these standards could result in sanctions up to and including disqualification of all supported team members from any or all races. [DP]

Event Notes

Please DO NOT arrive before 3pm Friday June 23rd.

Registration - See <https://www.regattanetwork.com/event/25986>

Sailor Lunch Menu and Order Info -

https://www.regattanetwork.com/clubmgmt/regatta_uploads/25986/CBTBKidsMenu.pdf

Limited Camping and Slip Reservations Available - email Brian Ankrom at gm@fbyc.net

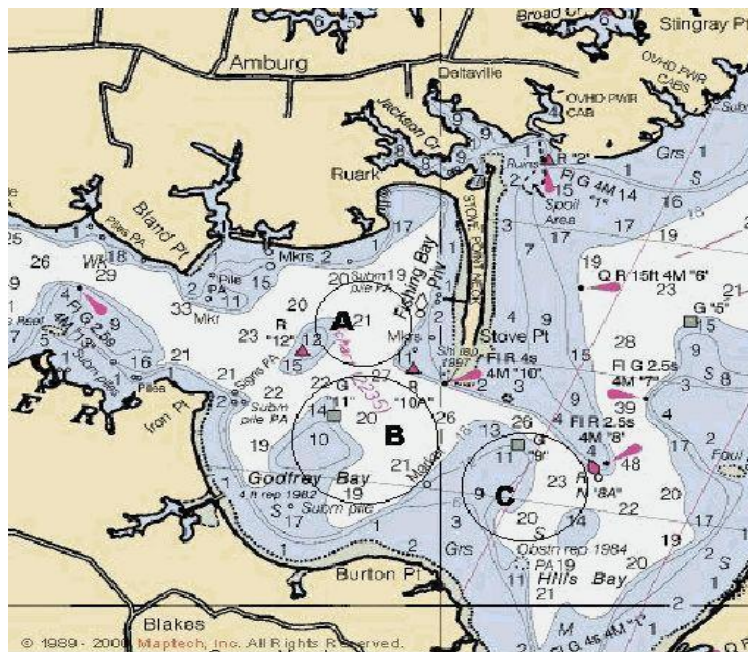
Regatta Chair – Steve Utley

Opti Green Fleet – (Area A) - Jack Cabell

Opti Red/White/Blue- (Area B) – Caroline Patrick

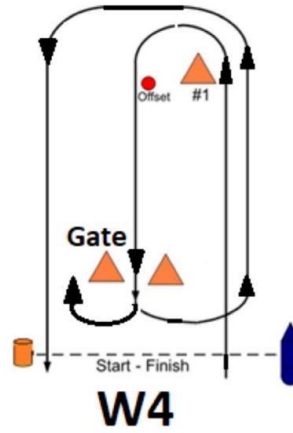
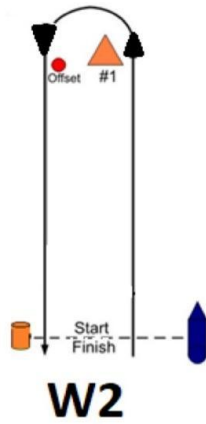
Laser & 420C (Area C) – Mike Karn

Appendix A: Racing Area

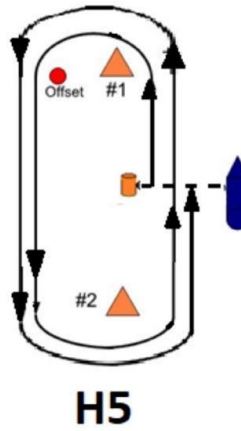
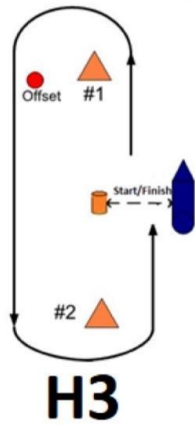


Appendix B: Courses

The following are courses that may be used. Number of legs will follow the letter designator.
Ex. W2, W4, H3, H5.



If a W4 has a single leeward mark (no gate), the mark shall be rounded to port.



H5 will be sailed in the following order: S/F, 1, 2, 1, 2, S/F. On leg 3, the start finish line is not a mark of the course. It is also allowed to be crossed (Start/Finish line is open).