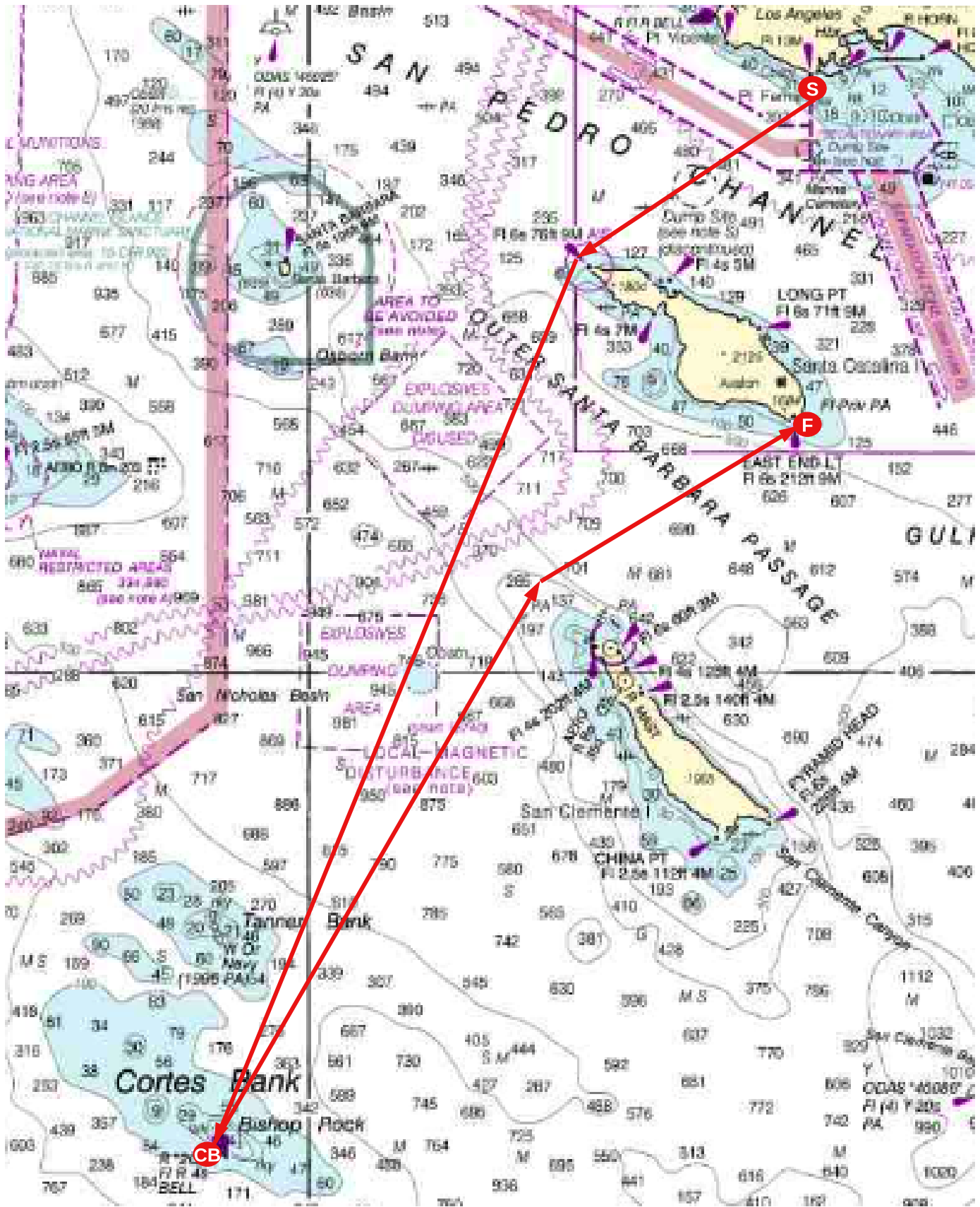
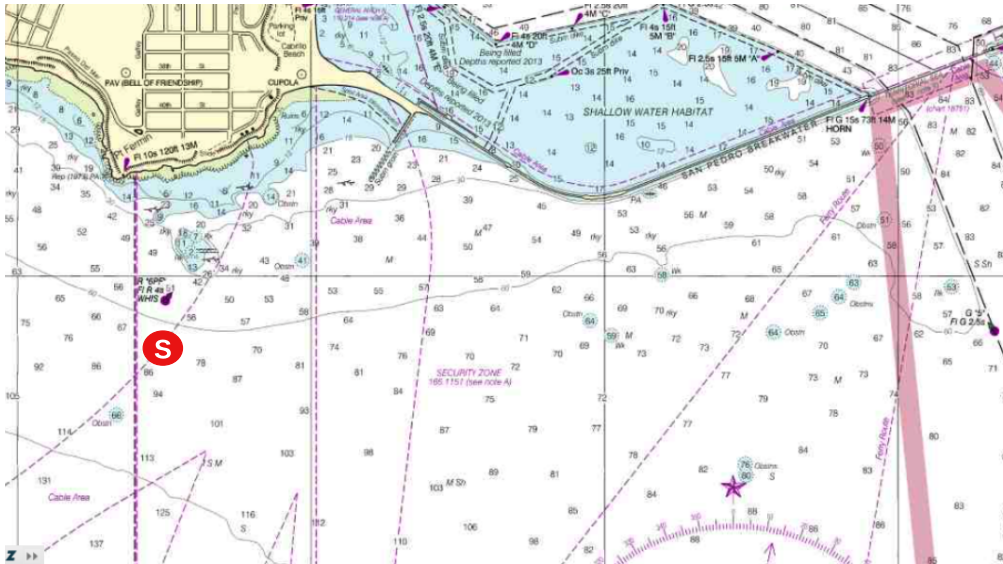


Trujillo Transpac Qualifier Race
Top-level Course Chart
(excerpted from Chart 18022 - NOT for Navigation)

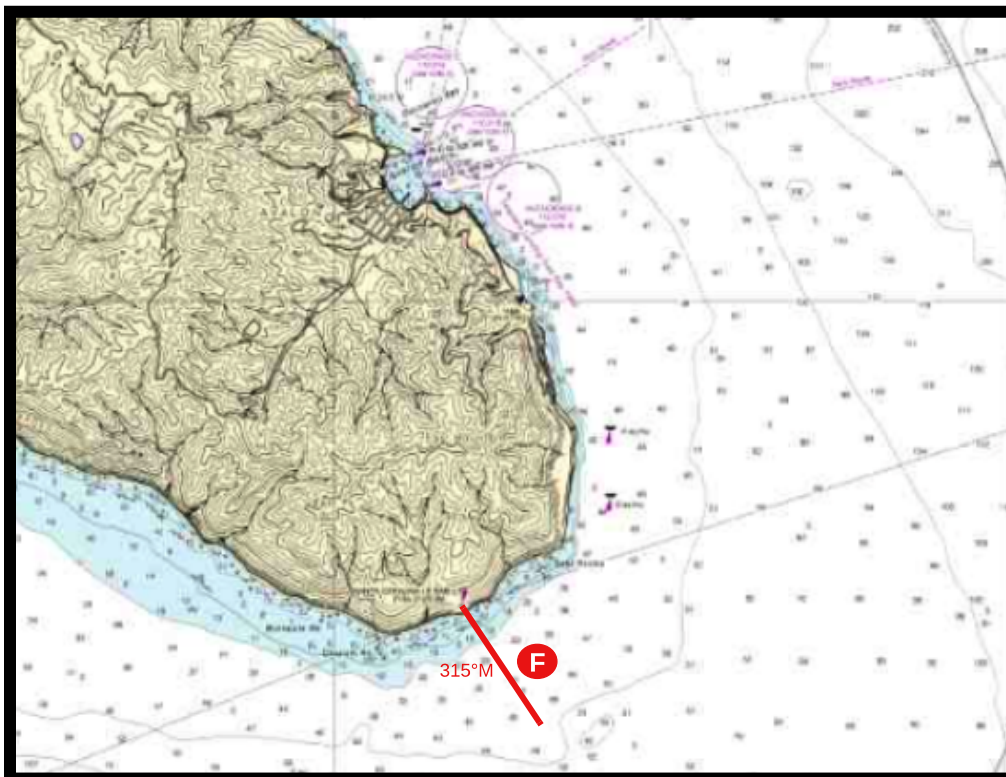


Trujillo Transpac Qualifier Race Detail Charts (NOT for Navigation)



The start line is in the vicinity of the Point Fermin Buoy located approximately 33° 41.9'N, 118°17.5'W.

From Chart 18749



Entrants will record their finishing time when the East End light bears 315 degrees magnetic, when sighting from the boat, and are within 1 nm of the East End light.

From Chart 18757