

SAILING INSTRUCTIONS

NYRA Invitational Regatta

March 25-26 2023

Neuse Yacht Racing Association

Section A applies to all competitors

Section B applies to Spinnaker and Non Spinnaker classes

Section C applies to the Navigation Class

SECTION A

MANAGEMENT AND RULES

1.1 NYRA is the Organizing Authority.

1.2 The Regatta will be governed by the Racing Rules of Sailing and the prescriptions of US Sailing, except as altered by these sailing instructions.

1.3 All boats shall comply with N.C. Wildlife Commission and US Coast Guard safety regulations.

1.4 RRS Appendix T – Arbitration applies

1.5 RRS Appendix V section V1 applies.

2 NOTICES TO COMPETITORS

All notices to competitors shall be posted on the official bulletin board at Regatta Network by 8:00pm the day before it will take effect.

3 CHANGES TO SAILING INSTRUCTIONS

Changes to sailing instructions, if any, shall be posted on the official bulletin board. Verbal changes may be made on the water. They will be communicated by radio on channel 78A and shall be acknowledged by each vessel.

4 RADIO COMMUNICATIONS

The R/C will monitor and attempt to broadcast on **channel 78A** to keep the competitors informed of general race information, class starting sequences, start count downs, premature starters, etc.

5 CLASSES

Anticipated fleets are Spinnaker, Non-Spinnaker, and Navigator class. See appropriate section.

6 SCHEDULE

Saturday February 18

0900 Competitors' meeting at Blackbeard Sailing Club

1055 First Warning signal, others to follow

Awards Dinner 1800

7 THE COURSE.

Race courses will be located on the Neuse River, for class details see Section B or C

8 STARTING SIGNALS

Races will be started according to Rule 26 with class flag as follows:

Spinnaker	Red,
Non-Spinnaker	White
Navigator	Green

AFTER THE STARTING SEQUENCE HAS BEGUN, ALL YACHTS IN CLASSES WHO'S WARNING SIGNAL HAS NOT BEEN GIVEN SHALL REMAIN CLEAR OF THE STARTING AREA. YACHTS THAT FAIL TO KEEP CLEAR ARE SUBJECT TO DISQUALIFICATION.

9 ADDITIONAL RACING

Flag "A" displayed, with no sound, as boats are finishing means 'No more racing today'

10 AWARDS

Awards will be presented at the NYRA Commodores Regatta Dinner at Lawson's on the Creek at the NC History Center.

DISCLAIMER OF LIABILITY

Competitors participate in the series entirely at their own risk. See Rule 4, Decision to Race. Each competitor is responsible for any and all liability claims which may result from their participation and shall be adequately self insured or covered by third party insurance. The organizing authority will not accept any liability for material damage or personal injury or death sustained in conjunction with or prior to, during or after each day's racing.

SECTION B

This Section applies to the Spinnaker and Non-spinnaker Classes

Courses.

Courses will be Triangular and or Windward/ Leeward on Saturday and a medium distance race on Sunday,. Refer to course chart.

Course marks in the order they are to be rounded will be displayed on a course board on the starboard side of the Signal Boat

Marks on Saturday

The starting line will be between an orange flag on the Signal Boat and 3' orange mark at the port end.

The weather mark will be a 5' orange Tetrahedron. The weather change mark will be a 5' yellow tetrahedron.

The Leeward mark will be a 5' orange Tetrahedron and may be set to leeward or to windward of the Signal Boat.

The Finish line will be between a blue flag on the signal Boat and the nearby 3' orange mark. In the event of a shortened course the finish line shall be between the S flag and the nearby mark of the course.

Marks on Sunday will be government marks and 5' orange tetrahedrons

Time Limits

Time limit for the first boat to sail the course and finish will be 75 minutes, other boats shall finish within a further 15 minutes or will be scored TLE with 2 points more than the last boat to finish within the limits.

Scoring

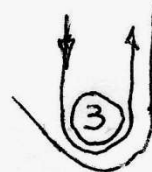
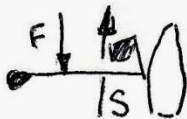
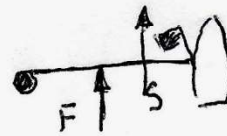
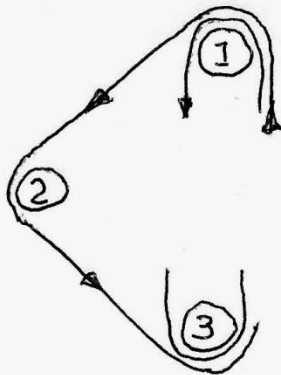
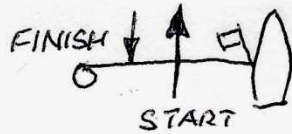
The Low Point System of Appendix A will apply.

There will be no results excluded if less than 4 races are completed.

One completed race will constitute a Regatta.

Three or more races are scheduled.

Course Diagram B



SECTION C – Navigator Class

1 Eligibility

To be eligible to race in this class all boats shall meet at the following criteria:-

- 1 No boats specifically designed for racing.
- 2 Only Dacron sails allowed. No spinnakers allowed
- 3 Powered winches are allowed
- 4 Two of the following additional requirements shall be met
 - a Pulpit mounted anchor or windlass
 - b Dodger or Bimini in place
 - c No sails less than five years old
 - d Bottom paint at least three years old.

2 Courses

- 1 The Navigator Class will sail a middle distance race with a modified pursuit start. See attached courses.
- 2 Rating bands and start times will be posted to Regatta Network by 2000 the night before the race.
- 3 The course to be sailed will selected from the Standard Pursuit Courses and will depend on forecast wind speed and direction. The selection will be published on Regatta Network by 2000 on the day preceding the race.j

3 Starting

The first boat, or Rating Band of boats, will have a Rule 26 starting sequence. Subsequent Rating Bands of boats will follow at intervals of 4 minutes. The class flag will be raised one minute before each subsequent start and will be dropped at each start.

4 Finishing Line

The finishing line will be between a yellow flag on the starboard side of the Signal Boat and a nearby 3' yellow mark.

5 Scoring

Elapsed times will be recorded. Corrected times will be calculated by multiplying the elapsed by a correction factor based on the boats PHRF rating. The boat with the lowest corrected time wins etc.