



**Hawaii Yacht Club**

1739C Ala Moana Blvd. Honolulu HI 96815

Telephone: (808) 949-4622

E-mail: [rcsail@hawaiiyachtclub.org](mailto:rcsail@hawaiiyachtclub.org)

# **Pokai Bay Race**

**Sailing Instructions**  
**March 25<sup>th</sup>-26<sup>th</sup>, 2023**  
**Hawaii Yacht Club**

## **1. RULES**

- 1.1. The event is governed by the rules as defined in The Racing Rules of Sailing.
  - 1.1.1. RSS 52 is modified to allow the use of autopilot for doubled and single-handed racers only.
  - 1.1.2. RSS 52 is modified to allow the use of powered winches.
  - 1.1.3. RSS 47 is modified to allow the use of banding for safety purposes.
  - 1.1.4. RSS 63.2 and 63.4 do not apply.

## **2. CHANGES TO SAILING INSTRUCTIONS.**

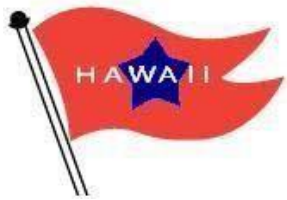
- 2.1. Any change to the sailing instructions will be posted before 09:00 on the day it will take effect, except that any change to the schedule of races will be posted by 20:00 on the day before it will take effect.

## **3. COMMUNICATION WITH COMPETITORS**

- 3.1. Notices to competitors will be posted on the official notice board located at Hawaii Yacht Club.
- 3.2. RC for Sail, Travis Scott, can be reached at (808) 383-3619
- 3.3. On the water, the race committee intends to monitor and communicate with competitors via VHF radio on channel 68.

## **4. SIGNALS MADE ASHORE**

- 4.1. Signals made ashore will be displayed at the Hawaii Yacht Club flagpole.



## Hawaii Yacht Club

1739C Ala Moana Blvd. Honolulu HI 96815

Telephone: (808) 949-4622

E-mail: rcsail@hawaiiyachtclub.org

### 5. SCHEDULE OF RACES

#### 5.1. Saturday, March 25<sup>th</sup>.

<u>Class</u>	<u>Warning</u>	<u>Start</u>
B	9:55 am	10:00 am
A	10:05 am	10:10 am
Multi	10:15 am	10:20 am

#### 5.2. Sunday, March 26<sup>th</sup>.

<u>Class</u>	<u>Warning</u>	<u>Start</u>
B	10:55 am	11:00 am
A	11:05 am	11:10 am
Multi	11:15 am	11:20 am

5.3. In the event a start sequence is canceled or delayed, the class order will remain unchanged. B class will start before A class before Multihull class.

### 6. CLASS FLAGS

<u>Class</u>	<u>Flag</u>
B	Bravo Flag (Red Square)
A	Pink with Black "X"
Multihull	Blue with White "M"

### 7. COURSE

7.1. Boats shall pass to seaward of all government aids to navigation.

7.1.1. Ala Wai Harbor, Kewalo Basin, Honolulu Harbor, Keehi Lagoon, Pearl Harbor, Kalaehoa Harbor

7.2. Boats shall not enter the Tesoro and Chevron security zone near Barbers Point either day.

21 16.43' N, 158 06.03' W

21 17.35' N, 158 3.95' W

21 16.47' N, 158 03.50' W

21 15.53' N, 158 05.56' W



## Hawaii Yacht Club

1739C Ala Moana Blvd. Honolulu HI 96815

Telephone: (808) 949-4622

E-mail: rcsail@hawaiiyachtclub.org

### 7.3. Boats shall not enter the Puuloa Danger Zone near Pearl Harbor on Sunday 3/26/23.

21 18.350' N, 157 59.233' W

21 18.183' N, 158 00.283' W

21 17.183' N, 158 00.100' W

21 17.367' N, 157 59.050' W

### 7.4. Saturday

#### 7.4.1. Course 1

7.4.1.1. Start – pass DH(p) – Finish

7.4.1.2. Indicated by a “1” flag. White pennant with red circle.

#### 7.4.2. Course 2

7.4.2.1. Start – Finish

7.4.2.2. Indicated by a “2” flag. Blue pennant with white circle.

### 7.5. Sunday

#### 7.5.1. Course 1

7.5.1.1. Start – Finish

## 8. MARKS

8.1. “DH” is red Diamond Head Buoy

## 9. THE START

9.1. Boats shall check in at race committee prior to their start sequence on VHF 68.

9.2. Saturdays start will be near the entrance of the Ala Wai harbor.

9.3. Sundays start will be approximately 0.5nm west of the Kahe power Plant.

9.4. The starting sequence will conform to RRS 26.

9.5. The starting line will be between the orange inflatable buoy on the port end and the staff of an orange flag on the Main Race Committee Boat on the starboard end.

9.6. Boats starting later than 10 minutes after the last starting signal for their class will be scored Did Not Start without a hearing. This changes RRS A4 and A5.



## Hawaii Yacht Club

1739C Ala Moana Blvd. Honolulu HI 96815

Telephone: (808) 949-4622

E-mail: rcsail@hawaiiyachtclub.org

## 10. THE FINISH

### 10.1. Saturday

- 10.1.1. The finish line will be between KR2, the Red Kalaeloa Harbor Channel Buoy, on the starboard end and the staff of an orange flag on the Main Race Committee Boat on the port end.
- 10.1.2. In the event the Main Race Committee Boat is not at the finish line, the finishing line will extend 100' West from KR2.
- 10.1.3. All boats shall record their own finish time and report it to the Race Committee upon request.
- 10.1.4. Boats finishing after 1700 hours shall record their own finish time and report it to the Race Committee as soon as possible.

### 10.2. Sunday

- 10.2.1. The finish line will be between Ala Wai Harbor R2 on the port end and the staff of an orange flag on the Main Race Committee Boat on the starboard end.
- 10.2.2. In the event the Main Race Committee Boat is not at the finish line, the finishing line will extend 100' seaward from R2 at bearing of 017° magnetic.
- 10.2.3. All boats shall record their own finish time and report it to the Race Committee upon request.
- 10.2.4. Boats finishing after 1700 hours shall record their own finish time and report it to the Race Committee as soon as possible.



## Hawaii Yacht Club

1739C Ala Moana Blvd. Honolulu HI 96815

Telephone: (808) 949-4622

E-mail: rcsail@hawaiiyachtclub.org

### **11. PROTESTS AND REQUESTS FOR REDRESS**

- 11.1. Protest forms are available from the race committee or on the HYC official bulletin board. Protests and requests for redress shall be delivered to the race committee within the appropriate time limit.
- 11.2. The protest time limit is 90 minutes after the last boat in the race has finished.
- 11.3. Notices of protests by the race committee or the protest committee will be posted to inform boats under RRS 61.1(b).

### **12. SCORING**

- 12.1. The low point system of Appendix A will apply.
- 12.2. The PHRF handicap system will be in effect for all boats. Race handicaps will be calculated using the Time-on-Time method.

### **13. SAFETY REGULATIONS**

- 13.1. VHF Channel 68 is reserved for essential communications, otherwise yachts shall monitor VHF Channel 16.
- 13.2. Upon withdrawing from the race, yachts shall inform the race committee via VHF Channel 68, by voice hail, or by calling the principal race officer Lynn Silva (808) 258-8199. Failure to do so may result in denied entry to future races.

### **14. PRIZES**

- 14.1. For each class, 1st prize will be awarded if three or more boats enter, 2nd prize will be awarded if five or more boats enter, and 3rd prize will be awarded if seven or more boats enter.

### **15. DISCLAIMER OF LIABILITY**

- 15.1. Competitors participate in the regatta entirely at their own risk. See RRS 4, Decision to Race. The organizing authority will not accept any liability for material damage or personal injury or death sustained in conjunction with or prior to, during, or after the race.

### **16. INSURANCE**

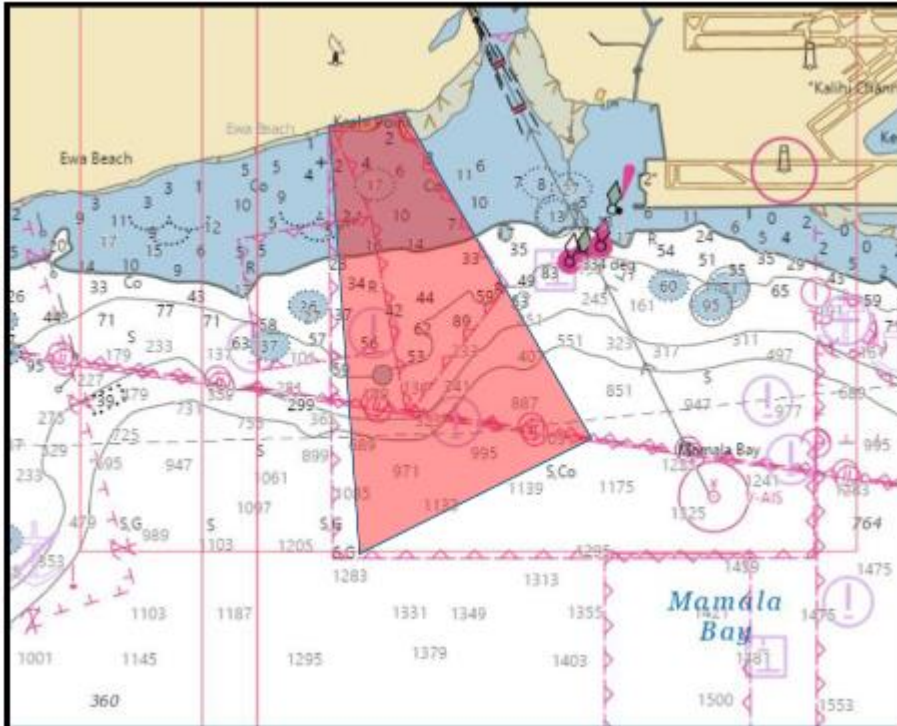
- 16.1. Each participating boat shall be insured with valid third-party liability insurance with a minimum cover of \$500,000 per event or the equivalent.



**Hawaii Yacht Club**  
1739C Ala Moana Blvd. Honolulu HI 96815  
Telephone: (808) 949-4622  
E-mail: rcsail@hawaiiyachtclub.org

## 17. MAPS

### 17.1. Puuloa Danger Zone



### 17.2. Tesoro and Chevron security zone

