



**75th Annual Labor Day Regatta
September 2nd – 3rd, 2023
Sarasota Sailing Squadron**

**C420
SAILING INSTRUCTIONS**

1. RULES

- 1.1. The regatta will be governed by the rules as defined in *The Racing Rules of Sailing (RRS)* and the Notice of Race, except as any of these are changed by these Sailing Instructions.
- 1.2. SI breaches for which a discretionary penalty may be applied by the protest committee are designated by “[DP]” Discretionary Penalty.

2. NOTICES TO COMPETITORS

- 2.1. Notices to competitors will be posted on the official notice board located at the Squadron Pavilion.

3. CHANGES TO SAILING INSTRUCTIONS

- 3.1. Any change to the sailing instructions will be posted before 0900 on the day it will take effect, except that any change to the schedule of races will be posted by 1800 on the day before it will take effect.

4. SIGNALS MADE ASHORE

- 4.1. Signals made ashore will be displayed ashore from the Squadron flagpole;
- 4.2. When flag AP is displayed ashore, ‘1 minute’ is replaced with ‘not less than 60 minutes’ in the race signal AP.

5. SCHEDULE OF RACES

- 5.1. Races are scheduled as follows:

Friday, Sept 1 st	1600 - 1800	Check-in
Saturday, Sept 2 rd	0800 - 0900	Check-in
	0930	Competitors Briefing
	1045	First Signal C420 Fleet
Sunday, Sept 3 rd	1000	First Signal C420 Fleet

- 5.2. On the last scheduled day of racing no warning signal shall be made after 1400.

6. Class flags are as follows:

C420 Class Flag

7. THE COURSE

- 7.1. The course diagrams are on the pages following SI 17. They show the courses, the order in which marks are to be passed, and the side on which each mark is to be left.

8. MARKS

- 8.1. Rounding marks will be Green inflatable tetrahedrons.
- 8.2. Windward offset mark will be a small ball type mark.
- 8.3. New marks will be a Pink inflatable tetrahedron.
- 8.4. The Start mark will be an Orange inflatable tetrahedron.
- 8.5. The Finish mark will be an Orange inflatable tetrahedron.

9. THE START

- 9.1. Races will be started by using RRS 26.
- 9.2. The starting line will be between a staff displaying an orange flag on the Signal boat and the course side of the starting mark.
- 9.3. Boats whose warning signal has not been made shall avoid the starting area during the starting sequence of other races. [DP]
- 9.4. A boat that does not start within 4 minutes after her starting signal will be scored Did Not Start without a hearing. This changes RRS A4 and A5.

10. CHANGE THE NEXT LEG OF THE COURSE

- 10.1. To change the next leg of the course, the RC will lay a new mark (or move the finishing line) and remove the old marks as soon as practicable.

11. THE FINISH

- 11.1. The finishing line will be between a staff displaying a blue flag on the Signal boat and the course side of the finishing mark.

12. TIME LIMITS

12.1. The following time limits will apply:

Race Time Limit is 60 minutes	Time limit for the first boat to sail the course and finish.
Finishing Window is 20 minutes	Time limit for boats to finish after the firstboat sails the course and finishes.

12.2. Boats failing to finish within the Finishing Window shall be scored Did Not Finish without a hearing. This changes RRS 35, A4 and A5.

13. PROTESTS AND REQUESTS FOR REDRESS

- 13.1. Protest forms are available at the race office. Protests and requests for redress or reopening shall be delivered there within the appropriate time limit.
- 13.2. For each class, the protest time limit is 60 minutes after the Signal Boat docks or the race committee signals no more racing today ashore, whichever is later.
- 13.3. Notices will be posted no later than 10 minutes after the protest time limit to inform competitors of hearings in which they are parties or named as witnesses and where the hearings will be held.
- 13.4. Notices of protests by the race committee, technical committee or protest committee will be posted to inform boats under RRS 61.1(b).
- 13.5. On the last scheduled day of racing a request for redress based on a protest committee decision shall be delivered no later than 30 minutes after the decision was posted. This changes RRS 62.2.

14. SCORING

- 14.1. The Low Point System of Appendix A will apply.
- 14.2. One race must be completed to constitute a regatta
- 14.3. When fewer than six (6) races have been completed, a boat's series score will be the total of her race scores.
- 14.4. When six (6) or more races have been completed, a boat's series score will be the total of her race scores excluding her worst score.

15. SAFETY REGULATIONS

- 15.1. Check-In with the Signal Boat before the initial warning signal of the first race of each day by sailing near the Signal Boat stern on a starboard tack and hailing your sail number until acknowledged by the Signal Boat. Failure to check in may result in a penalty. [DP]
- 15.2. A boat retiring from the race shall notify a Race Committee vessel before leaving the course, or, when that is not possible, notify the Race Office immediately upon arriving ashore. [DP]

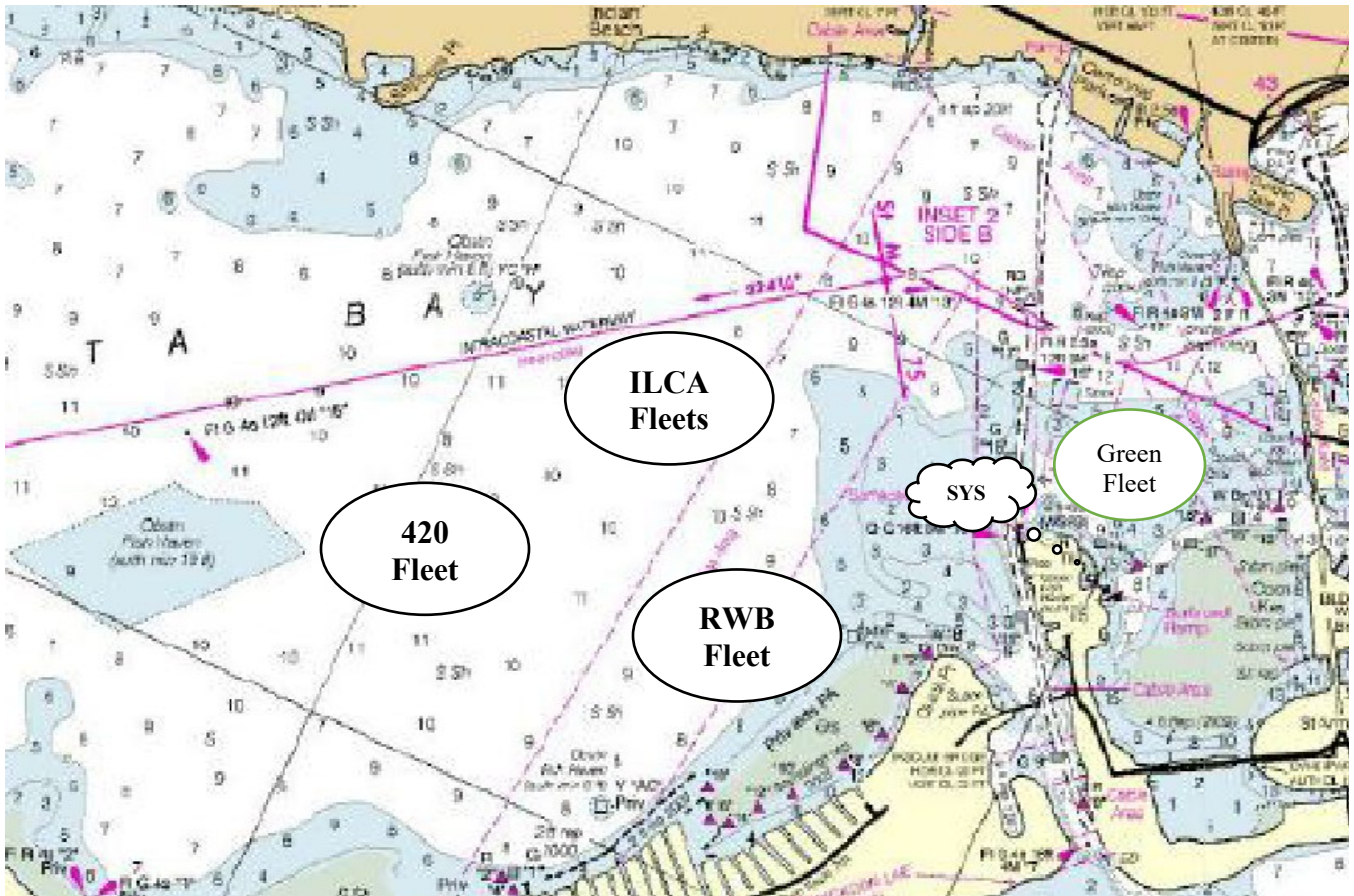
16. SUPPORT BOATS

- 16.1. Team leaders, coaches, and other support persons shall stay outside areas where boats are racing from the time of the preparatory signal for the first class to start until all boats have finished; retired or the race committee signals postponement or abandonment. [DP]
- 16.2. All support boats equipped with an emergency cutoff switch, the operator shall always wear the associated lanyard when in the vicinity of competitors, the sailing area, and the Squadron. [DP].
- 16.3. All coach boats and other support boats shall come to the aid of any competitor in distress or requesting assistance. [DP]
- 16.4. All support boats shall comply with US Coast Guard regulations. [DP]

17. PRIZES

- 17.1. Prizes will be awarded to each fleet with 5 boats or more.

RACING AREA



COURSE DIAGRAM

Windward-Leeward Course Diagram, Reach Finish

Course LA – Windward/Leeward with Offset Mark, Reach Finish	
Signal	Mark Rounding Order
LA	Start – 1- 1a – 2p - Finish
LA2	Start – 1- 1a – 2s/2p – 1 – 1a – 2p -Finish

