



75th Annual Labor Day Regatta September 2nd – 3rd, 2023

Sarasota Sailing Squadron & Sarasota Youth Sailing VHF Ch 11



GREEN FLEET SAILING INSTRUCTIONS

Opti Class Philosophy: USODA is a teaching class and GREEN FLEET is its introductory fleet for novice sailors. The Rules of Sailing are important and taught but learning to race while having fun is equally stressed. These sailing instructions are structured within The Racing Rules of Sailing to provide a flexible, less structured and less formal racing environment. Green Fleet is not *always* scored. All participants receive participation awards. While race placement and progress may be tracked, who places first is less important than learning, improving, and having fun along the way. Parents and competitors who are looking for a more competitive environment should consider the Championship Fleet red, white and blue racing divisions.

1. RULES

- 1.1. The regatta will be governed by the rules as defined in *The Racing Rules of Sailing*.
- 1.2. SI breaches for which a discretionary penalty may be applied by the protest committee are designated by “[DP]” Discretionary Penalty.

2. NOTICES TO COMPETITORS

- 2.1. Notices to competitors will be posted on the official notice board located at the Squadron Pavilion.

3. CHANGES TO SAILING INSTRUCTIONS

- 3.1. Any change to the sailing instructions will be posted before 0900 on the day it will take effect, except that any change to the schedule of races will be posted by 1800 on the day before it will take effect.

4. SIGNALS MADE ASHORE

- 4.1. Signals made ashore will be displayed ashore from the Squadron flag pole.
- 4.2. When flag AP is displayed ashore, ‘1 minute’ is replaced with ‘not less than 60 minutes’ in the race signal AP.

5. SCHEDULE OF RACES

- 5.1. Races are scheduled as follows:

Friday, Sept. 1st	1600 - 1800	Check-in
Saturday, Sept. 2nd	0800 - 0900	Check-in
	0930	Skippers meeting; Green Fleet to follow
	1100	First Warning for Green Fleet
Sunday, Sept. 3rd	1000	First Warning
	1400	No Warning Signal After

- 5.2. On the last scheduled day of racing no warning signal shall be made after 1400. Awards to follow racing.

6. Class flags are as follows:

- 6.1. OPTI Logo on a green flag



7. THE COURSE

- 7.1. The course diagrams are on the pages following SI 15. They show the courses, the order in which marks are to be passed, and the side on which each mark is to be left.

8. MARKS

- 8.1. Windward mark will be a Pink Inflatable Tetrahedron.
8.2. Wing mark and Leeward mark will be Pink Inflatable Tetrahedrons.
8.3. The start/finish mark will be a Green Inflatable Tetrahedron.

9. THE START

- 9.1. Races will be started by using RRS 26.
9.2. The starting line will be between a staff displaying an orange flag on the race committee vessel and the course side of the starting mark.
9.3. A boat that does not start within 4 minutes after her starting signal will be scored Did Not Start without a hearing. This changes RRS A4 and A5.

10. THE FINISH

- 10.1. The finishing line will be between a staff displaying an orange flag on the race committee vessel and the course side of the finishing mark.

11. TIME LIMITS

- 11.1. The following time limits will apply:

Race Time Limit is 60 minutes	Time limit for the first boat to sail the course and finish.
Finishing Window is 20 minutes	Time limit for boats to finish after the first boat sails the course and finishes.

- 11.2. Boats failing to finish within the Finishing Window shall be scored Did Not Finish without a hearing. This changes RRS 35, A4 and A5.

12. PROTESTS AND REQUESTS FOR REDRESS

- 12.1. Since Green Fleet is an introductory fleet, protests are teaching opportunities. An open discussion of the protest process (mock protest) may be held if resources are available. All competitors, parents and coaches are encouraged to attend and observe.

13. COACHING

- 13.1. Coaching is encouraged by the race committee. Coaching should focus on the bottom half of the fleet. Coaching on the water is for all, and all coaches are required to assist all sailors. All coaches are required to have VHF radios on and operating on the Green Fleet race committee channel, VHF 11, while racing is underway. The race committee has the right to remove from the Green Fleet course any coach who disregards the instructions of the race committee.

14. SAFETY REGULATIONS

- 14.1. Check-In with the Signal Boat before the initial warning signal of the first race of each day by sailing near the Signal Boats stern on a starboard tack and hailing your sail number until acknowledged by the Signal Boat. Failure to check in may result in a penalty. [DP]
- 14.2. A boat retiring from the race shall notify a Race Committee vessel before leaving the course, or, when that is not possible, notify the Race Office immediately upon arriving ashore. [DP]

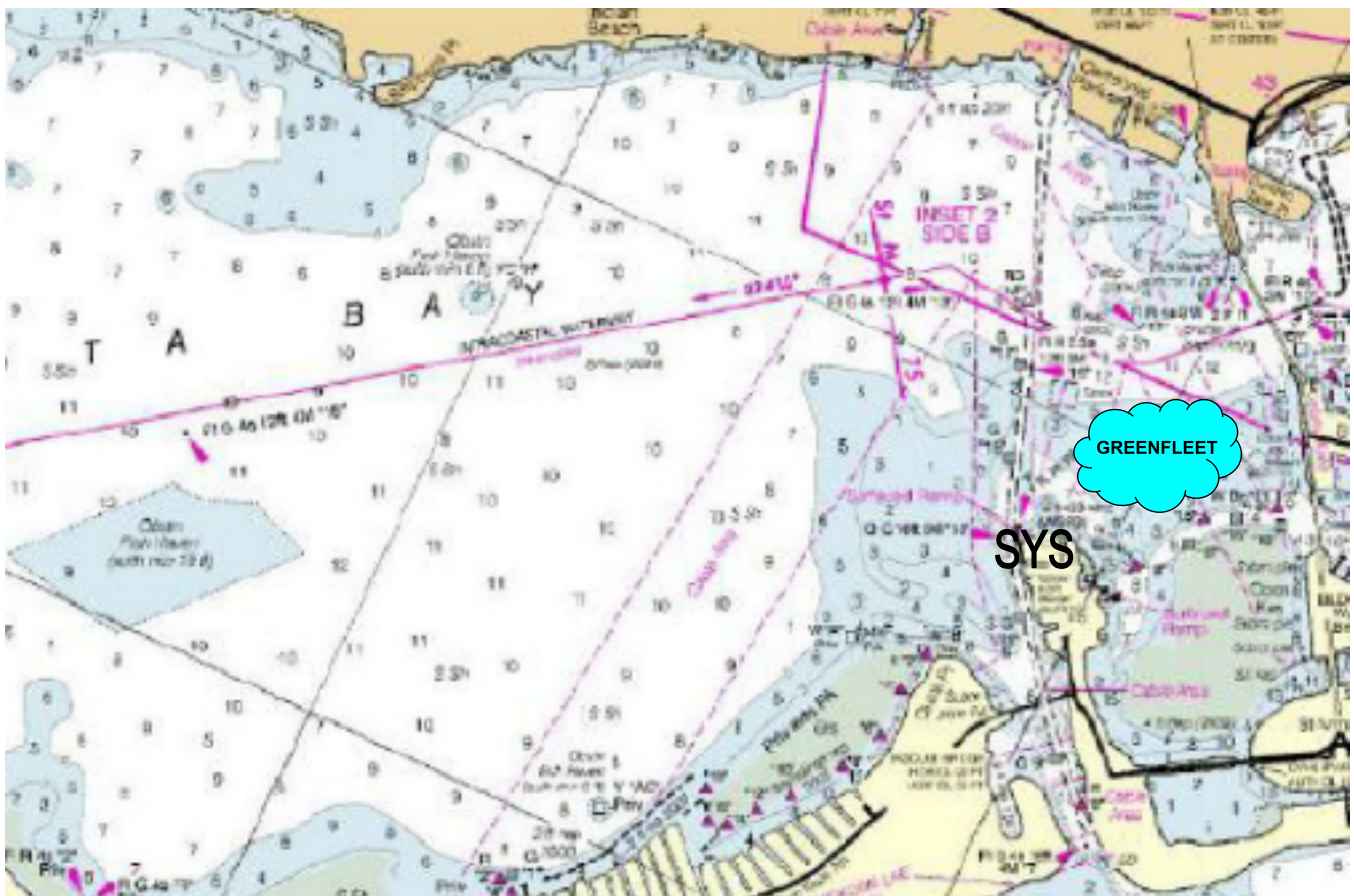
15. SUPPORT BOATS

- 15.1. Team leaders and other support persons shall stay outside areas where boats are racing from the time of the preparatory signal until all boats have finished or retired or the race committee signals postponement or abandonment. [DP]
- 15.2. All support boats must be equipped with an emergency cutoff switch, the operator shall always wear the associated lanyard when in the vicinity of competitors, the sailing area, and the Squadron. [DP].
- 15.3. All coach boats and other support boats shall come to the aid of any competitor in distress or requesting assistance. [DP]
- 15.4. All support boats shall comply with US Coast Guard regulations. [DP]

16. PRIZES

- 16.1. All participants receive participation awards. While placement and progress may be tracked, scores are less important than learning, improving, and having fun along the way.

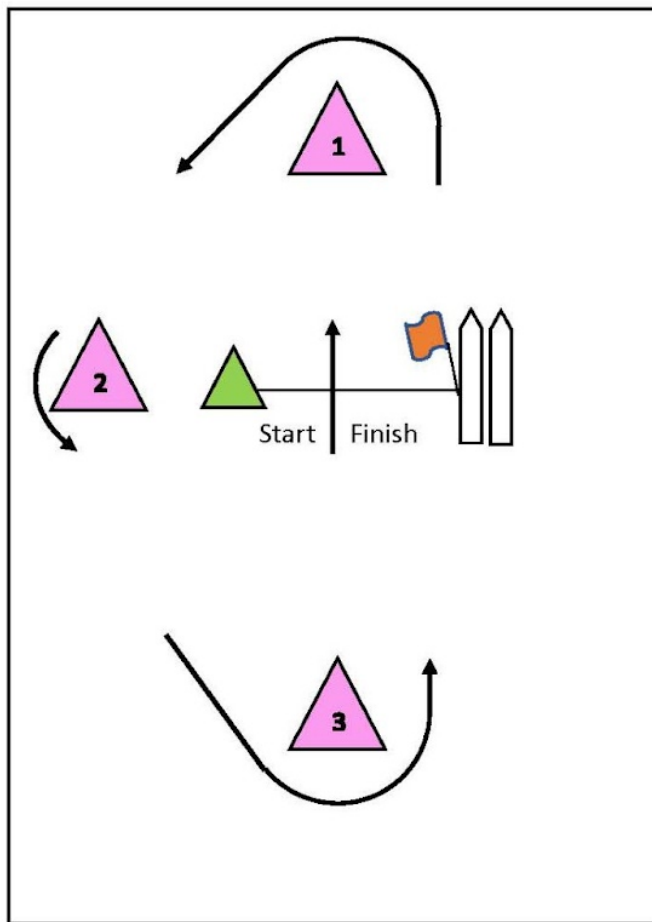
RACING AREA



COURSE DIAGRAM

Course T - Triangle, Mid-Line Start/Finish

Mark Rounding Order Start – 1 – 2 – 3 - Finish



Green Fleet Course Triangle	
Signal	Mark Rounding Order
TL1	Start – 1- 2 -3 – Finish



**75th Annual Labor Day Regatta
September 2nd – 3rd, 2023**

Sarasota Sailing Squadron & Sarasota Youth Sailing

**RED, WHITE AND BLUE FLEET
SAILING INSTRUCTIONS**

VHF Ch 5

1 RULES

- 1.1 The regatta will be governed by the rules as defined in The Racing Rules of Sailing
- 1.2 SI breaches for which a discretionary penalty may be applied by the protest committee are designated by “[DP]” Discretionary Penalty.

2 NOTICES TO COMPETITORS

Notices to competitors will be posted on the official notice board located at the Squadron Pavilion.

3 CHANGES TO SAILING INSTRUCTIONS

Any change to the sailing instructions will be posted before 0900 on the day it will take effect, except that any change to the schedule of races will be posted by 1800 on the day before it will take effect.

4 SIGNALS MADE ASHORE

- 4.1 Signals made ashore will be displayed ashore from the Squadron flagpole.
- 4.2 When flag AP is displayed ashore, ‘1 minute’ is replaced with ‘not less than 60 minutes’ in the race signal AP.

5 SCHEDULE OF RACES

- 5.1 To alert boats that a race or sequence of races will begin soon, the orange starting line flag will be displayed with one sound at least 1 minute before a warning signal is made.
- 5.2 As many races as possible are scheduled. One race will constitute a regatta.
- 5.3 Flag A displayed with no sound while boats are finishing means no more racing today.
- 5.4 Races are scheduled as follows: No warning will be made after 1400 on the last day.

Friday Sept. 1st	1600 – 1800	Check In
Saturday Sept. 2nd	0800-0900	Check In
	930	Skippers Meeting
	1045	First Warning
Sunday Sept. 3rd	1000	First Warning

On the last scheduled day of racing no warning signal shall be made after 1400.

6 CLASS FLAG

Class flag is as follows:

OPTI RWB Fleet	OPTI Logo on a white flag	
----------------	---------------------------	---

7 THE COURSES

- 7.1 The course diagrams are on the pages following SI 16. They show the courses, the order in which marks are to be passed, and the side on which each mark is to be left.
- 7.2 No later than the warning signal, the race committee signal vessel will display the course designation.
- 7.3 A 10-degree allowable mark adjustment during a race without any change signal or mark change.

8 MARKS

- 8.1 Original rounding marks will be Red inflatable tetrahedrons. New marks as provided in SI 10 will be Green inflatable tetrahedrons. There will be no Offset Mark 1a with a new Mark 1 on Courses W1 or W2.
- 8.2 Offset will be a small ball type mark.
- 8.3 The Start mark will be a Green inflatable tetrahedron.
- 8.4 The Finish mark will be a Pink inflatable tetrahedron.

9 THE START

- 9.1 Races will be started by using RRS 26 with the warning signal made 5 minutes before the starting signal.
- 9.2 The starting line will be between a staff displaying an orange flag on the Signal boat and the course side of the starting mark.
- 9.3 Race Committee will not hail the sail numbers of the boats OCS or subject to starting penalties.
- 9.4 A boat that does not start within 4 minutes after her starting signal will be scored Did Not Start without a hearing. This changes RRS A5.1

10 CHANGE OF THE NEXT LEG OF THE COURSE

To change the next leg of the course, the race committee will lay a new mark (or move the finishing line) and remove the original mark as soon as practicable. When in a subsequent change a new mark is replaced, it will be replaced by an original mark.

11 THE FINISH

The finishing line will be between a staff displaying a blue flag on the race committee vessel and the course side of the finishing mark.

12 TIME LIMITS

12.1 The following time limits will apply:

Race Time Limit Is 40 minutes	Time limit for the first boat to sail the course and finish.
Finishing Window is 15 minutes	Time limit for boats to finish after the first boat sails the course and finishes.

12.2 Any boat that starts and does not finish within the Finish Window will be scored DNF. This changes RRS 35, and 63.1.

13 PROTESTS AND REQUESTS FOR REDRESS

- 13.1 Protest forms are available at the race office. Protests and requests for redress or reopening shall be delivered there within the appropriate time limit.
- 13.2 The protest time limit is 60 minutes after the last boat has finished the last race of the day or the race committee signals no more racing today whichever is later. The time will be posted on the notice board.

- 13.3 Notices will be posted no later than 10 minutes after the protest time limit to inform competitors of hearings in which they are parties or named as witnesses and where the hearings will be held. Hearings may be a mix of in-person and videoconference.
- 13.4 Notices of protests by the race committee, technical committee or protest committee will be posted to inform boats under RRS 61.1(b).
- 13.5 On the last scheduled day of racing a request for redress based on a protest committee decision shall be delivered no later than 30 minutes after the decision was posted. This changes RRS 62.2.

14 SAFETY REGULATIONS

- 14.1 Check-In with the Signal Boat before the initial warning signal of the first race of each day by sailing near the Signal Boats stern on a starboard tack and hailing your sail number until acknowledged by the Signal Boat. Failure to check in may result in a penalty. [DP]
- 14.2 A boat retiring from the race shall notify a Race Committee vessel before leaving the course, or, when that is not possible, notify the Race Office immediately upon arriving ashore. [DP]
- 14.3 [DP] All competitors shall always wear personal floatation devices while afloat, except briefly while changing or adjusting clothing and personal equipment. Flag Y will not be displayed.

15 SUPPORT BOATS

- 15.1 Support vessels shall monitor VHF Channel # 5
- 15.2 All support boats equipped with an emergency cutoff switch, the operator shall always wear the associated lanyard when in the vicinity of competitors, the sailing area, and the Squadron. [DP].
- 15.3 Team leaders, coaches, and other support persons shall stay outside areas where boats are racing from the time of the preparatory signal for the first class to start until all boats have finished or retired or the race committee signal postponement or abandonment. [DP]
- 15.4 All coach boats and other support boats shall come to the aid of any competitor in distress or requesting assistance. [DP]
- 15.5 All support boats shall comply with US Coast Guard regulations. [DP]

16 PRIZES

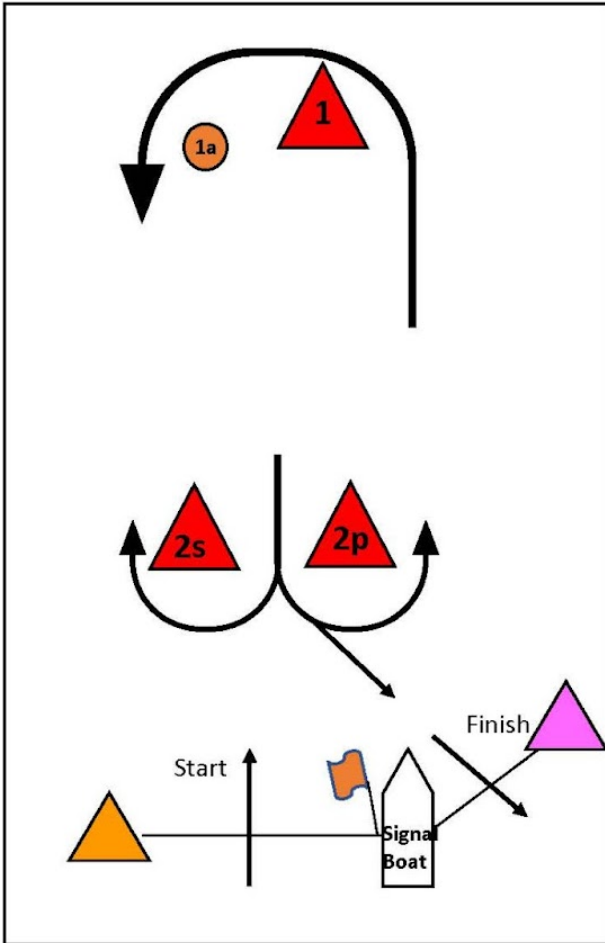
Prizes will be given as stated in the NOR.

RACING AREA



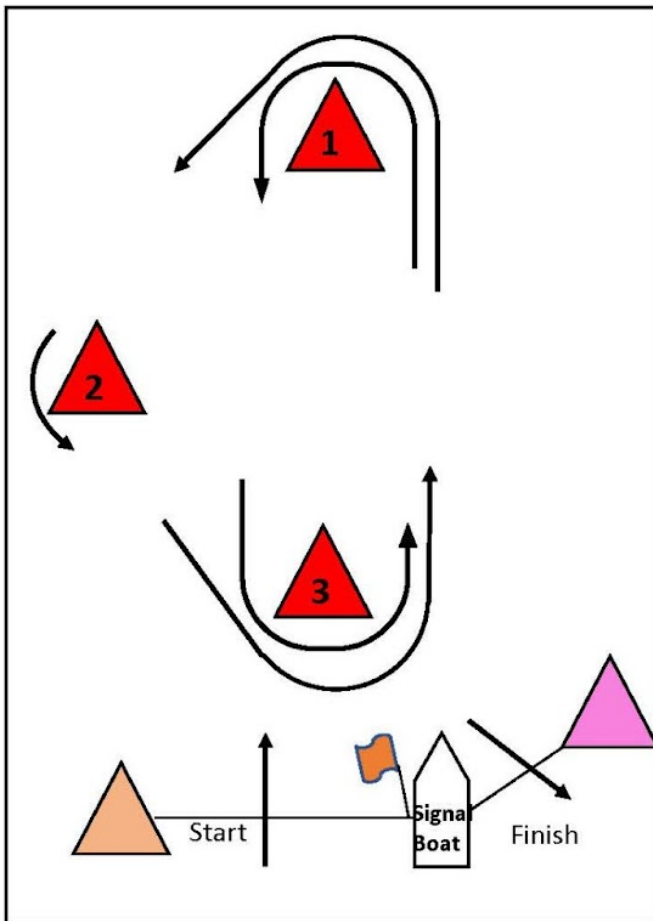
COURSE DIAGRAM

Windward-Leeward, Leeward Finish



Course W – Windward/Leeward with Offset Mark, Reach Finish	
Signal	Mark Rounding Order
W1	Start – 1- 1a – 2P - Finish
W2	Start – 1- 1a – 2S/2P – 1 – 1a – 2P -Finish

COURSE DIAGRAM



Course T – Triangle, Reach Finish	
Signal	Mark Rounding Order
T1	Start – 1p- 2p -3p – Finish
T2	Start – 1p- 2p – 3p – 1p – 3p - Finish



**75th Annual Labor Day Regatta
September 2nd – 3rd, 2023
Sarasota Sailing Squadron**

**ILCA 4, 6 and 7
SAILING INSTRUCTIONS**

1. RULES

- 1.1. The regatta will be governed by the rules as defined in *The Racing Rules of Sailing (RRS)* and the Notice of Race, except as any of these are changed by these Sailing Instructions.
- 1.2. SI breaches for which a discretionary penalty may be applied by the protest committee are designated by “[DP]” Discretionary Penalty.

2. NOTICES TO COMPETITORS

- 2.1. Notices to competitors will be posted on the official notice board located at the Squadron Pavilion.

3. CHANGES TO SAILING INSTRUCTIONS

- 3.1. Any change to the sailing instructions will be posted before 0900 on the day it will take effect, except that any change to the schedule of races will be posted by 1800 on the day before it will take effect.

4. SIGNALS MADE ASHORE

- 4.1. Signals made ashore will be displayed ashore from the Squadron flagpole;
- 4.2. When flag AP is displayed ashore, ‘1 minute’ is replaced with ‘not less than 60 minutes’ in the race signal AP.

5. SCHEDULE OF RACES

- 5.1. Races are scheduled as follows:

Friday, Sept 2 nd	1600 - 1800	Check-in
Saturday, Sept 3 rd	0800 - 0900	Check-in
	0930	Competitors Briefing
	1045	First Signal ILCA Fleet
Sunday, Sept 4 th	1000	First Signal ILCA Fleet

- 5.2. On the last scheduled day of racing no warning signal shall be made after 1400.

6. Class flags are as follows:

ILCA 7 (Standard) Class Flag - Red ILCA Logo on White Background

ILCA 6 (Radial) Class Flag - Red ILCA Logo with Green Background

ILCA 4 (4.7) Class Flag - Red ILCA Logo on Yellow Background

7. THE COURSE

- 7.1. The course diagrams are on the pages following SI 15. They show the courses, the order in which marks are to be passed, and the side on which each mark is to be left.

8. MARKS

- 8.1. Rounding marks will be Yellow inflatable tetrahedrons.
- 8.2. Windward offset mark will be a small ball type mark.
- 8.3. ILCA 4.7 (shortened) Windward Mark will be an orange inflatable 'Tomato' with no offset mark. (Course SL or SL2)
- 8.4. New marks will be Pink inflatable tetrahedrons.
- 8.5. The Start mark will be an Orange inflatable tetrahedron.
- 8.6. The Finish mark will be a small ball type mark.

9. THE START

- 9.1. Races will be started by using RRS 26.
- 9.2. The starting line will be between a staff displaying an orange flag on the Signal boat and the course side of the starting mark.
- 9.3. Boats whose warning signal has not been made shall avoid the starting area during the starting sequence of other races. [DP]
- 9.4. A boat that does not start within 4 minutes after her starting signal will be scored Did Not Start without a hearing. This changes RRS A4 and A5.

10. CHANGE THE NEXT LEG OF THE COURSE

- 10.1. To change the next leg of the course, the RC will lay a new mark (or move the finishing line) and remove the old marks as soon as practicable.
- 10.2. The Race Committee may make minor adjustments to the course (up to 15

11. THE FINISH

- 11.1. The finishing line will be between a staff displaying a blue flag on the Signal boat and the course side of the finishing mark.

12. TIME LIMITS

12.1. The following time limits will apply:

Race Time Limit is 60 minutes	Time limit for the first boat to sail the course and finish.
Finishing Window is 20 minutes	Time limit for boats to finish after the firstboat sails the course and finishes.

12.2. Boats failing to finish within the Finishing Window shall be scored Did Not Finish without a hearing. This changes RRS 35, A4 and A5.

13. PROTESTS AND REQUESTS FOR REDRESS

- 13.1. Protest forms are available at the race office. Protests and requests for redress or reopening shall be delivered there within the appropriate time limit.
- 13.2. For each class, the protest time limit is 60 minutes after the Signal Boat docks or the race committee signals no more racing today ashore, whichever is later.
- 13.3. Notices will be posted no later than 10 minutes after the protest time limit to inform competitors of hearings in which they are parties or named as witnesses and where the hearings will be held.
- 13.4. Notices of protests by the race committee, technical committee or protest committee will be posted to inform boats under RRS 61.1(b).
- 13.5. On the last scheduled day of racing a request for redress based on a protest committee decision shall be delivered no later than 30 minutes after the decision was posted. This changes RRS 62.2.

14. SCORING

- 14.1. The Low Point System of Appendix A will apply.
- 14.2. One race must be completed to constitute a regatta
- 14.3. When fewer than six (6) races have been completed, a boat's series score will be the total of her race scores.
- 14.4. When six (6) or more races have been completed, a boat's series score will be the total of her race scores excluding her worst score.

15. SAFETY REGULATIONS

- 15.1. Check-In with the Signal Boat before the initial warning signal of the first race of each day by sailing near the Signal Boat stern on a starboard tack and hailing your sail number until acknowledged by the Signal Boat. Failure to check in may result in a penalty. [DP]
- 15.2. A boat retiring from the race shall notify a Race Committee vessel before leaving the course, or, when that is not possible, notify the Race Office immediately upon arriving ashore. [DP]

16. SUPPORT BOATS

- 16.1. Team leaders, coaches, and other support persons shall stay outside areas where boats are racing from the time of the preparatory signal for the first class to start until all boats have finished; retired or the race committee signals postponement or abandonment. [DP]
- 16.2. All support boats equipped with an emergency cutoff switch, the operator shall always wear the associated lanyard when in the vicinity of competitors, the sailing area, and the Squadron. [DP].
- 16.3. All coach boats and other support boats shall come to the aid of any competitor in distress or requesting assistance. [DP]
- 16.4. All support boats shall comply with US Coast Guard regulations. [DP]

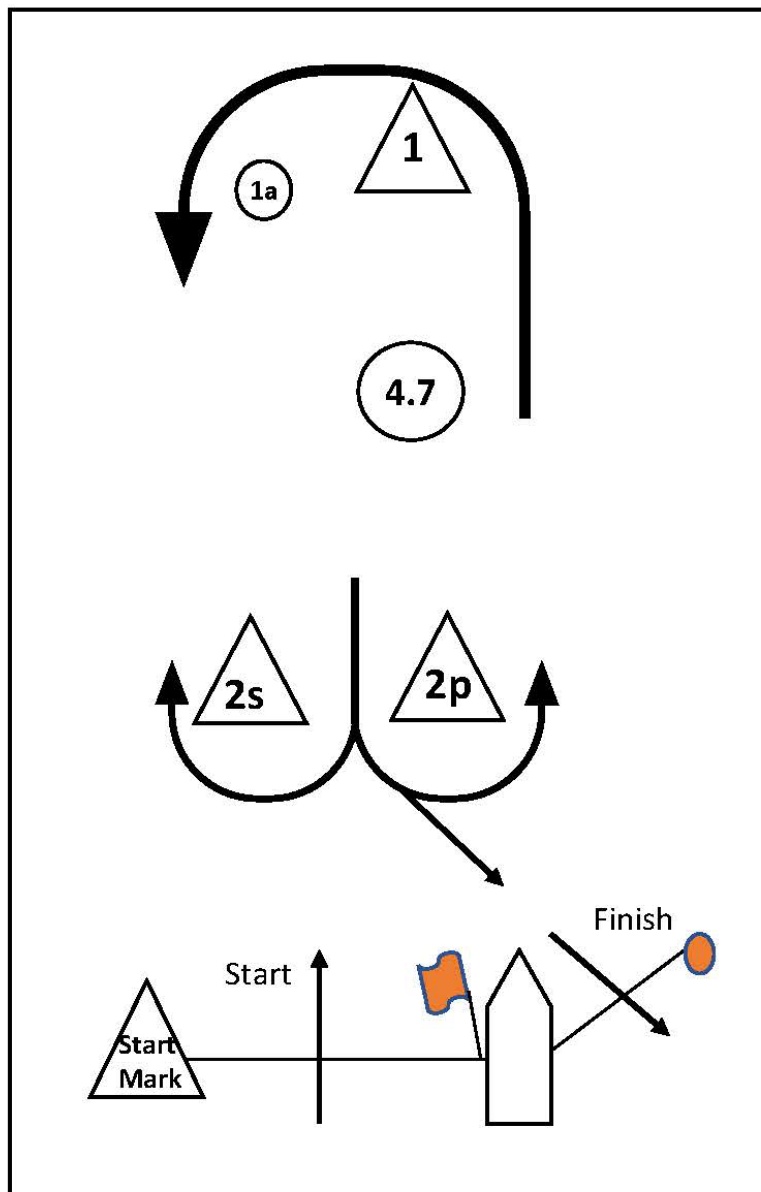
17. PRIZES

- 17.1. Prizes will be awarded to each fleet with 5 boats or more.

COURSE DIAGRAM

Windward-Leeward Course Diagram, Reach Finish

Course LA – Windward/Leeward with Offset Mark, Reach Finish	
Signal	Mark Rounding Order
LA	Start – 1- 1a – 2p - Finish
LA2	Start – 1- 1a – 2s/2p – 1 – 1a – 2p -Finish
Course SLA – Shortened Windward/Leeward, Reach Finish – Only ILCA 4.7	
Signal	Mark Rounding Order
SLA	Start – 4.7 – 2p – Finish
SLA2	Start – 4.7 – 2s/2p – 4.7 –2p – Finish





**75th Annual Labor Day Regatta
September 2nd – 3rd, 2023
Sarasota Sailing Squadron**

**C420
SAILING INSTRUCTIONS**

1. RULES

- 1.1. The regatta will be governed by the rules as defined in *The Racing Rules of Sailing (RRS)* and the Notice of Race, except as any of these are changed by these Sailing Instructions.
- 1.2. SI breaches for which a discretionary penalty may be applied by the protest committee are designated by “[DP]” Discretionary Penalty.

2. NOTICES TO COMPETITORS

- 2.1. Notices to competitors will be posted on the official notice board located at the Squadron Pavilion.

3. CHANGES TO SAILING INSTRUCTIONS

- 3.1. Any change to the sailing instructions will be posted before 0900 on the day it will take effect, except that any change to the schedule of races will be posted by 1800 on the day before it will take effect.

4. SIGNALS MADE ASHORE

- 4.1. Signals made ashore will be displayed ashore from the Squadron flagpole;
- 4.2. When flag AP is displayed ashore, ‘1 minute’ is replaced with ‘not less than 60 minutes’ in the race signal AP.

5. SCHEDULE OF RACES

- 5.1. Races are scheduled as follows:

Friday, Sept 1 st	1600 - 1800	Check-in
Saturday, Sept 2 rd	0800 - 0900	Check-in
	0930	Competitors Briefing
	1045	First Signal C420 Fleet
Sunday, Sept 3 rd	1000	First Signal C420 Fleet

- 5.2. On the last scheduled day of racing no warning signal shall be made after 1400.

6. Class flags are as follows:

C420 Class Flag

7. THE COURSE

- 7.1. The course diagrams are on the pages following SI 17. They show the courses, the order in which marks are to be passed, and the side on which each mark is to be left.

8. MARKS

- 8.1. Rounding marks will be Green inflatable tetrahedrons.
- 8.2. Windward offset mark will be a small ball type mark.
- 8.3. New marks will be a Pink inflatable tetrahedron.
- 8.4. The Start mark will be an Orange inflatable tetrahedron.
- 8.5. The Finish mark will be an Orange inflatable tetrahedron.

9. THE START

- 9.1. Races will be started by using RRS 26.
- 9.2. The starting line will be between a staff displaying an orange flag on the Signal boat and the course side of the starting mark.
- 9.3. Boats whose warning signal has not been made shall avoid the starting area during the starting sequence of other races. [DP]
- 9.4. A boat that does not start within 4 minutes after her starting signal will be scored Did Not Start without a hearing. This changes RRS A4 and A5.

10. CHANGE THE NEXT LEG OF THE COURSE

- 10.1. To change the next leg of the course, the RC will lay a new mark (or move the finishing line) and remove the old marks as soon as practicable.

11. THE FINISH

- 11.1. The finishing line will be between a staff displaying a blue flag on the Signal boat and the course side of the finishing mark.

12. TIME LIMITS

12.1. The following time limits will apply:

Race Time Limit is 60 minutes	Time limit for the first boat to sail the course and finish.
Finishing Window is 20 minutes	Time limit for boats to finish after the firstboat sails the course and finishes.

12.2. Boats failing to finish within the Finishing Window shall be scored Did Not Finish without a hearing. This changes RRS 35, A4 and A5.

13. PROTESTS AND REQUESTS FOR REDRESS

- 13.1. Protest forms are available at the race office. Protests and requests for redress or reopening shall be delivered there within the appropriate time limit.
- 13.2. For each class, the protest time limit is 60 minutes after the Signal Boat docks or the race committee signals no more racing today ashore, whichever is later.
- 13.3. Notices will be posted no later than 10 minutes after the protest time limit to inform competitors of hearings in which they are parties or named as witnesses and where the hearings will be held.
- 13.4. Notices of protests by the race committee, technical committee or protest committee will be posted to inform boats under RRS 61.1(b).
- 13.5. On the last scheduled day of racing a request for redress based on a protest committee decision shall be delivered no later than 30 minutes after the decision was posted. This changes RRS 62.2.

14. SCORING

- 14.1. The Low Point System of Appendix A will apply.
- 14.2. One race must be completed to constitute a regatta
- 14.3. When fewer than six (6) races have been completed, a boat's series score will be the total of her race scores.
- 14.4. When six (6) or more races have been completed, a boat's series score will be the total of her race scores excluding her worst score.

15. SAFETY REGULATIONS

- 15.1. Check-In with the Signal Boat before the initial warning signal of the first race of each day by sailing near the Signal Boat stern on a starboard tack and hailing your sail number until acknowledged by the Signal Boat. Failure to check in may result in a penalty. [DP]
- 15.2. A boat retiring from the race shall notify a Race Committee vessel before leaving the course, or, when that is not possible, notify the Race Office immediately upon arriving ashore. [DP]

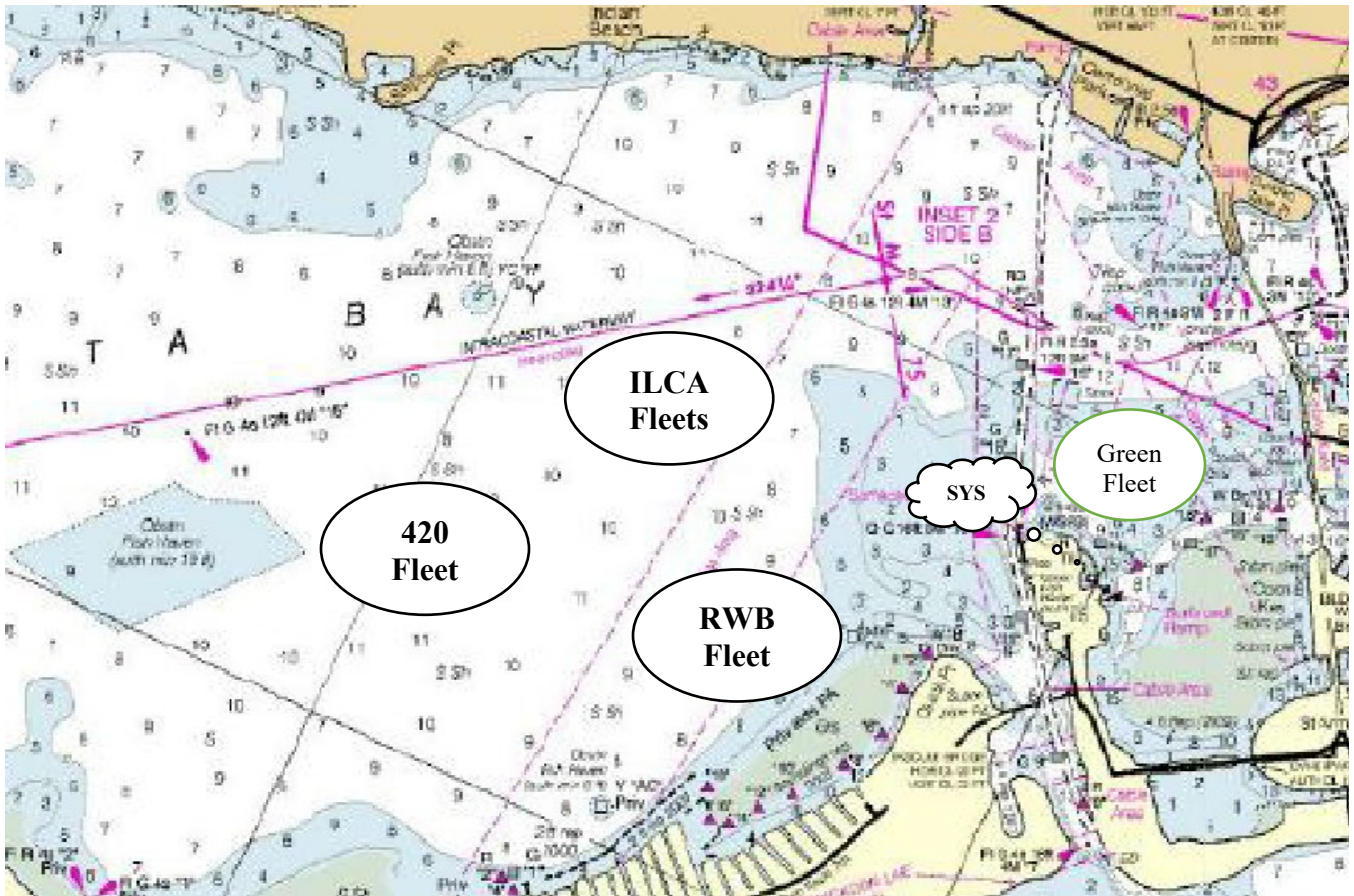
16. SUPPORT BOATS

- 16.1. Team leaders, coaches, and other support persons shall stay outside areas where boats are racing from the time of the preparatory signal for the first class to start until all boats have finished; retired or the race committee signals postponement or abandonment. [DP]
- 16.2. All support boats equipped with an emergency cutoff switch, the operator shall always wear the associated lanyard when in the vicinity of competitors, the sailing area, and the Squadron. [DP].
- 16.3. All coach boats and other support boats shall come to the aid of any competitor in distress or requesting assistance. [DP]
- 16.4. All support boats shall comply with US Coast Guard regulations. [DP]

17. PRIZES

- 17.1. Prizes will be awarded to each fleet with 5 boats or more.

RACING AREA



COURSE DIAGRAM

Windward-Leeward Course Diagram, Reach Finish

Course LA – Windward/Leeward with Offset Mark, Reach Finish	
Signal	Mark Rounding Order
LA	Start – 1- 1a – 2p - Finish
LA2	Start – 1- 1a – 2s/2p – 1 – 1a – 2p -Finish

