

AYC 2023

Windermere Regatta

SAILING INSTRUCTIONS

1. RULES

- 1.1. The regatta will be governed by [The Racing Rules of Sailing \(RRS\)](#), the [prescriptions of the U.S. Sailing Association](#), and the [U.S. Sailing Safety Equipment Requirements](#) for “Nearshore”, except as changed by these Sailing Instructions. All boats must have a valid 2023 PHRF certificate or be listed on the current PHRF-NW roster, or be sailing in a fleet with enough boats to qualify for a one design start.
- 1.2. Appendix V, RRS V1 applies.
- 1.3. Appendix V, RRS V2 applies. V2 (b) is changed by appending: The post-race penalty shall be a minimum of 2 places, but not more than a DNF.
- 1.4. RRS 52, Manual Power, is amended to include: Boats registered as shorthanded (single- or double-handed) are allowed to use autopilot mechanisms for sail changes and other situations where having one crew member assigned to steering the yacht may compromise the safety of crew and craft.
- 1.5. Each competitor is to fly the official purple 2023 Party Circuit sponsor flag from their backstay or transom area. Flags will be available for pickup Friday evening. [DP]

2. NOTICES TO COMPETITORS

- 2.1. Any notices will be posted before the event on the online regatta page.
- 2.2. A competitor meeting will be held at 0900 on Saturday. A representative from each competing boat shall attend.
- 2.3. The race committee will utilize VHF channel 72 for communications with competitors. Absence of radio communication, the failure of a boat to hear the communication, or any other issues regarding the communication shall not constitute grounds for redress. This changes RRS 62.1(a).

3. CHANGES TO SAILING INSTRUCTIONS

- 3.1. Changes to the Sailing Instructions will be posted before 0900 on the day it will take effect, except that any change to the schedule of races will be posted by 2000 on the day before it will take effect.
- 3.2. Oral changes to the Sailing Instructions may be made by the RC on the water by raising code flag L, with one sound. Changes will be announced on VHF 72. It is each boats responsibility to listen to the changes made on the radio. The changes will be repeated a minimum of three times.



PARTY CIRCUIT
AYC | BYC | OIYC | OHYC

PARTYCIRCUIT.ORG | WAYCROSS.COM
THANK YOU TO OUR PLATINUM SPONSOR



Windermere Regatta Sailing Instructions

4. SIGNALS MADE ASHORE

- 4.1. Signals made ashore will be displayed at the flagpole at the Anacortes Yacht Club.
- 4.2. When flag AP is displayed ashore, '1 minute' is replaced with 'not less than 30 minutes' in the race signal AP in the RRS.

5. REGATTA SCHEDULE

Friday, May 19	1730	Welcome competitors at Anacortes Yacht Club bar open
	1800	dinner \$7 (barbecue outdoors if weather permits)
Saturday, May 20	0900	Mandatory Competitor Meeting at AYC
	1100	First race warning
	1600	No warning signal will be made after
	1700	Bar open, Foosball Championship
	1800	Dinner, Art Raffle, Sailor-oke
Sunday, May 21	1100	First race warning
	1400	No warning signal will be made after
	Approx 1530	Awards presentation on the yacht club complimentary chili dogs, bar open

CLASS FLAGS

- 5.1. Class flags will be numeric international code flags corresponding to each class's number.
- 5.2. Each class will be assigned an identifying color and number at the competitor meeting on Saturday morning.
- 5.3. Class ribbons shall be flown from backstay between 3 and 6 feet above the deck. On boats without backstays, the ribbon shall be flown from the end of the boom, bottom batten, or aft reef point, whichever is more visible. [DP]

6. RACING AREAS AND COURSES

- 6.1. The racing area will be in the vicinity of Northeast Guemes Island. The race committee reserves the right to move the course to another location if conditions dictate.
- 6.2. The diagram in Attachment 1 identifies the relative temporary mark locations.
- 6.3. The race committee may not use all marks or set all marks listed in Attachment 1 during the race.
- 6.4. All marks except the finish mark are to be left to port.

Windermere Regatta Sailing Instructions

- 6.5. Local islands and permanent marks may also be used, as displayed in Attachment 2.
- 6.6. No later than the warning signal, the race committee will designate the course and announce it on VHF channel 72.
- 6.7. Some starts *may* include multiple classes.

7. MARKS

- 7.1. Temporary marks will be yellow cylinders or green tetrahedrons. Start and finish marks will be smaller pink or white balls.
- 7.2. A race committee vessel may use its engine to hold position. This shall not constitute grounds for redress. This changes Rule 62.1(a).
- 7.3. A limit buoy attached to the race committee signal vessel and the line attaching it shall be considered part of the mark.

8. THE START

- 8.1. The starting line will be between a staff displaying an orange flag on the signal vessel at the starboard end and the course side of the port-end starting mark.
- 8.2. Boats whose warning signal has not been made shall avoid the starting area during the starting sequence for other races. [DP]
- 8.3. The Race Committee will attempt to hail the sail numbers of individually recalled boats on VHF channel 72. Failure to do so, the timing, the order of the hails, the failure to hear the hail, or any other issues regarding the hail shall not constitute grounds for redress. This changes RRS 62.1(a).
- 8.4. If the warning signal for a succeeding class is made with the starting signal of a preceding class, and if the preceding class has a general recall, then the class flag of the succeeding class will be removed, and the start of the succeeding class will be considered abandoned without further signal. This changes Rule 26 and 27.3.

9. THE FINISH

- 9.1. The finishing line will be between a staff displaying a blue flag on the signal vessel and the course side of the finishing mark on the side of the signal vessel opposite of the starting line.
- 9.2. Boats who have finished and are no longer racing shall avoid the finishing area and not interfere with boats racing. [DP]
- 9.3. A boat shall not cross the finish line other than while finishing a race.

10. TIME LIMITS AND TARGET TIMES

- 10.1. On Saturday, the time limit for the first boat in each class to finish is two (2) hours after her starting signal.
- 10.2. Boats failing to finish within 45 minutes of the first boat in her class sails the course and finishes will be scored Did Not Finish (DNF) without a hearing. This changes Rule 35, A4 and A5.
- 10.3. On Saturday the target time for each race will be one (1) hour.

Windermere Regatta Sailing Instructions

- 10.4. On Sunday, any medium distance races that include permanent marks or islands will have a time limit of three (3) hours for the first boat to finish after her start signal, with a target time of two (2) hours. In a medium distance race, boats failing to finish within 69 minutes of the first boat in her class that sails the course and finishes will be scored DNF without a hearing. This changes Rules 35, A4 and A5.

11. PROTESTS AND REQUESTS FOR REDRESS

- 11.1. The post-race penalties and arbitration procedures of Appendix T shall apply.
- 11.2. Protest forms will not be made available by race committee. (Protest forms are available on the US Sailing Website as well as in the [mobile app version of the RRS.](#))
- 11.3. Protests and requests for redress or reopening shall be delivered to a race or protest committee representative at AYC within the protest time limit. The protest time limit is 30 minutes after the race committee signal boat returns to the dock. Protests may also be accepted by the Principal Race Officer, at their discretion within this time limit.
- 11.4. Arbitration meetings will take place 15 minutes after the protest time limit has expired. If all parties are available, arbitration may start earlier.
- 11.5. Notices will be posted no later than 15 minutes after the protest time limit to inform competitors of hearings in which they are parties or named as witnesses. Hearings will be held beginning 30 minutes after the protest time limit at a location specified in the notice.
- 11.6. Notices of protests by the race committee, technical committee or protest committee will be posted on the official notice board to inform boats under Rule 61.1(b).
- 11.7. On the last scheduled day of racing a request for redress based on a protest committee decision shall be delivered no later than 15 minutes after the decision was posted. This changes Rule 62.2.
- 11.8. Requests for redress based on a score shall be delivered within 30 minutes of the scores being posted. This changes Rule 62.2.
- 11.9. Filing a formal protest is expressly discouraged at this regatta, favoring avoiding altercation and/or accepting penalty turns. However, disregard of the rules is even more strongly discouraged!

12. SCORING

- 12.1. A boat's series score will be the total of her race scores. If five or more races are completed, a boat's score will be the total of her race scores minus her worst score. This change Rule A2.1
- 12.2. PHRF classes shall be scored using Time-on-Time ratings. One-Design classes shall be scored by the order of finish.
- 12.3. Scores of DNS, DNC, OCS, UFD, BFD, DSQ, and DNE will be scored points equal to the number of boats that started the race +1. Scores of DNF, NSC, and RET will be scored the number of boats that finished the race +2, or the same number of points as DNS, whichever is less.
- 12.4. Short-handed fleet scoring will be calculated as the average percentage score of each short-handed boat, where the percentage score is the boats position in their fleet in the race divided by the number of boats that started in that fleet. If a boat has an excluded

Windermere Regatta Sailing Instructions

score by SI 13.1, it will not be counted in the short-handed scoring. Boats will then be ranked by average score.

13. SAFETY REGULATIONS

- 13.1. Before the first warning signal of each day of racing all boats shall either sail by the committee vessel or check in by radio on channel 72.
- 13.2. Boats shall not impede the safe passage of a stand-on vessel not racing and shall comply with the International Regulations for Prevention of Collisions at Sea, 1968 (68 COLREGS).
- 13.3. A boat that retires from a race shall notify the race committee as soon as possible.

14. RADIO COMMUNICATION

- 14.1. Except in an emergency, a boat shall neither make radio transmissions while racing nor receive radio communications (except AIS data) not available to all boats. This restriction also applies to mobile telephones.

15. PRIZES

- 15.1. Prizes will be awarded to the top boat(s) in each class.
- 15.2. The number of prizes will be adjusted to suit the number of competitors pre-registered. Additional prizes may be awarded at the discretion of the organizing authority.

16. RISK, LIABILITY, AND PERSONAL CONDUCT

- 16.1. Competitors participate in the regatta at their own risk. See Rule 3 (Decision to Race). The organizing authority will not accept any liability for material damage or personal injury or death sustained in conjunction with or prior to, during, or after the regatta.
- 16.2. A boat's Person In Charge will accept full responsibility for the actions of the boat's crew during any activity related to this event. This includes onshore activities before, during, and after the regatta.

17. INSURANCE

- 17.1. Each participating keelboat shall be insured with valid third-party liability insurance with a minimum cover of \$400,000 per incident or the equivalent.

ATTACHMENT 1 – COURSE DIAGRAM

Courses for each class will be defined by a placard on the committee boat bearing a number representing the class and a series of letters representing the course. Marks S, A, B, C, and D are to be left to port.

Windward, and leeward are defined by the wind determined by the RC at the beginning of the starting sequence.

Marks A and B will windward marks. Mark B may also be used as a jibe mark.

Mark C and D will be leeward marks, with Mark C to windward of the signal boat.

Marks A C will be green tetrahedrons.

Marks B D will be yellow cylinders.

Marks S and F will be pink or white balls.

The positions of marks to the left or the right of the course axis may not be accurate in the drawing, but their relative distances from the Signal Boat are (i.e. A will be further from the signal boat than B).

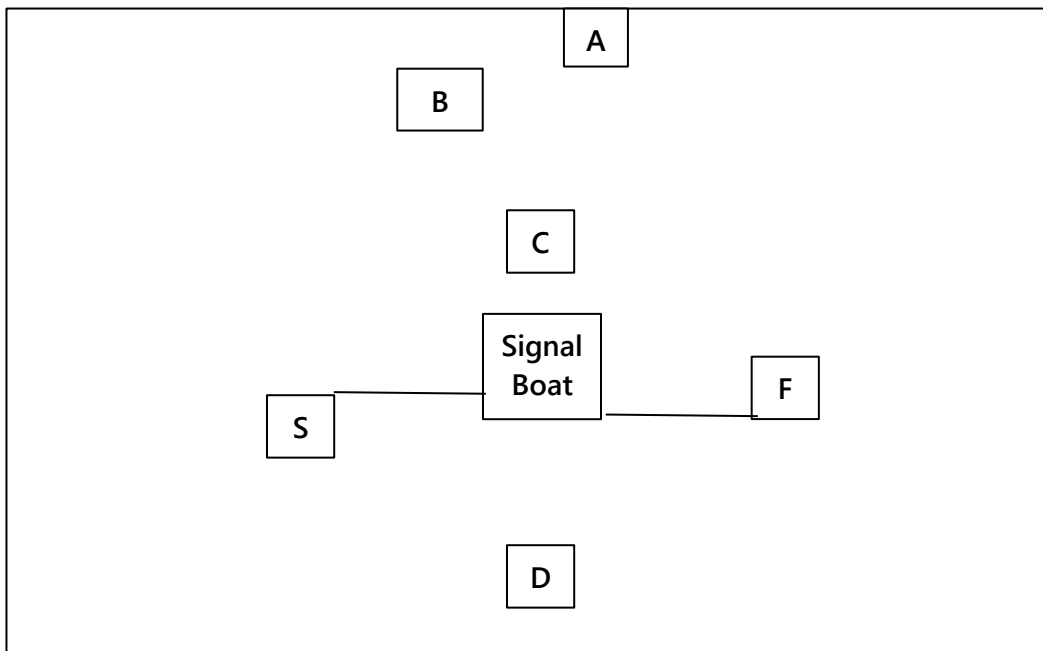
Example Courses

S A D F

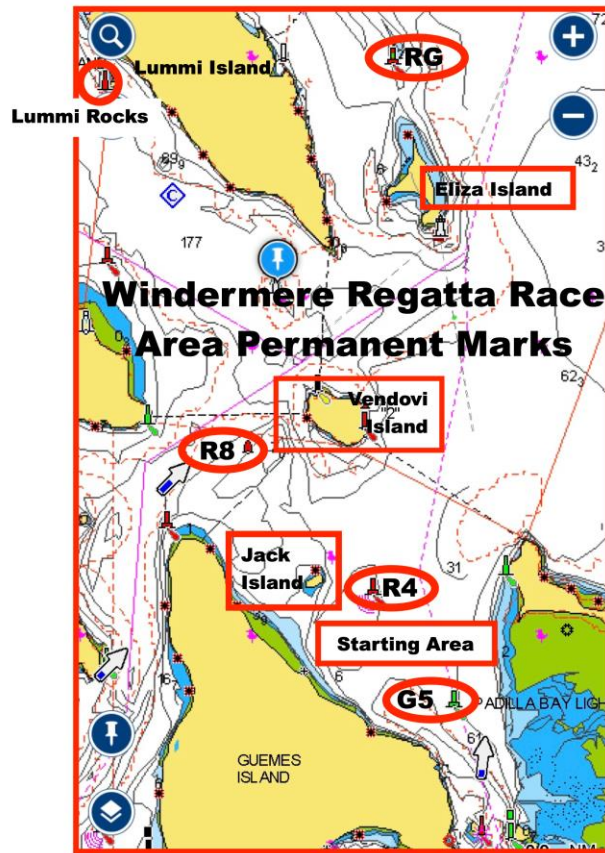
Start, Round A to port, round D to port, upwind finish

S A C B F

Start, round A to port, round C to port, round B to port, downwind finish



Windermere Regatta Sailing Instructions



- L: Lummi Rocks
- E: Eliza Island
- V: Vendovi Island
- J: Jack Island
- N: permanent mark RG to the North
- W: permanent mark R8 to the West
- R: permanent mark R4 to the South
- G: permanent mark G5 to the SouthEast