



THE 2023 REACH DOWN THE BEACH AND QUANTUM CUP REGATTA SAILING INSTRUCTIONS

Organizing Authority: The Houston Yacht Club Shore Acres, TX USA
To be sailed Friday and Saturday, 12 and 13 May 2023

1. RULES CHANGES FOR BOTH DAYS

- 1.1. The current Racing Rules of Sailing (RRS), except as may be modified by these the Sailing Instructions. If there is one-design racing and there is a conflict between Class Rules and the RRS, Class Rules shall apply.
- 1.2. Boats equipped and rated with power winches may use same. This modifies RRS 51.
- 1.3. Boats sailing Single or Double-handed may use autopilots. This modifies RRS 51. Use of autopilots is permitted when more than 500 yards from the start line and up to 500 yards from the finish line. This changes Rule 52.
- 1.4. RRS 41 is hereby modified to allow Single or Double-handed entrants to communicate amongst themselves by VHF Radio.
- 1.5. All yachts are encouraged to monitor channel 16 when offshore and to communicate potential hazards to other racers. This changes Rule 41.
- 1.6. Between the hours of sunset and sunrise, the rules of Part 2 are replaced with the International Regulations for Preventing Collisions at Sea (IRPCAS).
- 1.7. The US SAILING Prescriptions to the RRS will apply.
- 1.8. The current PHRF Regulations as administered by PHRF Galveston Bay apply.
- 1.9. The current US Sailing Safety Equipment Requirements (USSER). These requirements are available at <https://www.ussailing.org/competition/offshore/safety-information/ser-world-sailing-special-regulations/>. A copy of these requirements should be kept aboard while racing. In the event of a conflict between these requirements and applicable class rules, the class rules shall apply.
- 1.10. The current IMS Rule (measurement) rules and regulations apply. (www.orc.org/rules)
- 1.11. Each boat shall carry an operating VHF radio capable of transmitting and receiving on Channels 13, 14, 16, 68, 72 and a cell phone, the number of which shall be on file with the Race Committee (via your registration).
- 1.12. The Friday race will feature a window start. This changes Rule 26.
- 1.13. The Saturday race:
 - 1.13.1.1. For the Saturday race – if weather conditions (i.e. chop) are such that there is risk of safety or damage to the signal boat, all classes shall revert to a window start. In this style of start, competitors will start within a time window defined in these Sailing Instructions. The exact start time will be of the Skipper’s choosing inside that window. The Race Committee shall capture the individual start times of each boat. The Race Committee shall capture the finish times of each boat and apply handicaps to calculate corrected times and finish positions. This changes RRS 26.
- 1.14. Appendix T1 will apply.
 - 1.14.1.1. Appendix T1.b is modified to read: “A Post-Race Penalty is a 20% Scoring Penalty calculated as stated in rule 44.3(c) if taken before the protest time limit expires. Otherwise, a Post-Race Penalty is a 30% Scoring Penalty calculated as stated in rule 44.3(c). However, rule 44.1(a) applies.”
- 1.15. US SAILING Prescription to the RRS Appendix V Rules V1 and V2 will apply.
 - 1.15.1.1. US SAILING Prescription to the RRS Appendix V Rule V2 is modified to read: “After a race, a boat that may have broken one or more rules of Part 2 or rule 31 in an incident while racing may take a Post-Race Penalty for that incident. A boat takes the penalty by delivering a written notice to the race office that identifies the race number and when and where the incident occurred. The penalty shall be a 20% Scoring Penalty, calculated as stated in rule 44.3(c) if taken before the protest time limit expires. Otherwise a 30% Scoring Penalty shall apply, calculated as

stated in rule 44.3(c). However, rules 44.1(a) and (b) apply, and the penalty shall not be taken after a protest hearing involving the incident has begun.

2. NOTICES TO COMPETITORS

- 1.2. Notices to competitors will be posted on the Official Notice Board located at (http://www.regattanetwork.com/clubmgmt/applet_notice_board.php?regatta_id=26334) or by clicking here: [Regatta Network Event Website](#)
- 1.3. Notices to competitors will be broadcast via VHF at the start line, finish line, and/or announced at the official regatta party in Freeport as appropriate.

3. CHANGES TO SAILING INSTRUCTIONS

- 1.4. Any written changes to these sailing instructions will be distributed by e-mail no later than 9:00 a.m. Thursday 11 May.
- 1.5. Verbal changes may be made on the water and shall be communicated to each boat by VHF before her warning signal.

4. SIGNALS MADE ASHORE

- 1.6. Any decision to abandon race will be announced via cell phone call to the number on record.
- 1.7. Any decision to postpone will be announced via cell phone call to the number on record.

FRIDAY RACE

1. SCHEDULE OF RACES

- 1.2. The starting window is open from 8:00 am to 12:00 pm. Race committee will monitor start times from the beach.
- 1.3. Each class will sail a single race.

2. RACING AREA

- 2.2. **Illustration 1** shows the location of the racing areas.

3. THE COURSES

- 3.2. The diagram in **Illustration 1** shows the course, a straight line to Freeport.
- 3.3. The course will be 42.1 miles in length.
- 3.4. The start is at **Galveston Channel marker #11** (N29 20.536 W94 44.472). Sail from Galveston Channel marker # 11 to the 5A marker (29° 19.659'N, 94° 41.336'W) 3.0 nm leaving it to starboard.
- 3.5. Sail to the finish in Freeport.

4. MARKS

- 4.2. The starting line is between the Bolivar Roads channel marker green 11 (N29 20.556 W94 44.462) at the port end and **an orange tarp** on the Official Signal Vehicle (bearing approximately 180°) on the starboard end beach.
- 4.3. In the absence of a signal vehicle, competitors will be crossing the start line when they sight the Green 11 marker at exactly 0 degrees.
- 4.4. The first rounding mark is the Galveston 5A marker. Leave it to starboard... please.
- 4.5. The finish line is between a virtual mark located at N28 56.153 W95 17.118 and the race committee at Thunder Road on the beach, bearing 300 degrees.

5. THE START

- 5.2. All boats are to hail the race committee and check in by name and sail number via VHF. Please include the total number of souls on board including the skipper. All skippers are encouraged to send a list of crew names by email (or text message) to the race committee after all are aboard – precision is important.
- 5.3. Races will be started during a starting window as described above.
- 5.4. Official time is GPS time.
- 5.5. The race committee will be monitoring and recording start times.



ILLUSTRATION 1



THE 2023 REACH DOWN THE BEACH AND QUANTUM CUP REGATTA SAILING INSTRUCTIONS

12. PRIZES

- 12.2. Trophies will be awarded based on final registration volumes.
- 12.3. Registrations received after the trophy order has been placed shall be awarded IOU's in place of the actual trophy
- 12.4. The race committee shall deliver owed trophies at a mutually agreeable time and place at a later date.
- 12.5. Prizes will be awarded Friday at The Captain's Table, Bridge Harbor Marina TX

13. INSURANCE

- 13.2. Each participating boat shall be insured with valid third-party liability insurance with a minimum cover of \$300,000 per incident or the equivalent.

14. USE OF ENGINES

- 14.2. Engines may be used in an emergency. After the emergency is resolved, competitors are to return to the closest point possible to where the engine was initially engaged and continue the race.
- 14.3. Engines may be used to charge batteries.
- 14.4. Use of engines is prohibited except as permitted above.

15. PROHIBITED EQUIPMENT

- 15.2. Use of electric winches is prohibited except as stated in section 1 RULES FOR BOTH DAYS 1.2 above.
- 15.3. Use of a self-steering system is prohibited except as stated in section 1 RULES FOR BOTH DAYS 1.3 above.

16. HANDICAPS

- 16.2. All PHRF class yachts must be handicapped by PHRF Galveston Bay for 2023.
- 16.3. All TOMA class yachts must be handicapped by the Texas Offshore Multihull Association.

ADDENDUM A: PROTEST FORM – LAST PAGE

SATURDAY RACE

1. SCHEDULE OF RACES

- 1.1. No warning signal before 8:00 a.m. The starting sequence will be as described in section 6 below.
- 1.2. Each class will sail a single race

2. CLASS FLAGS and STARTING SEQUENCE

- 2.1. 1st START TOMA MULTIHULL: **Pink**
- 2.2. 2nd PHRF SPINNAKER: **Navy**
- 2.3. 3rd PHRF NON-SPINNAKER: **Brown**

3. RACING AREA

- 3.1. **Illustration 3** shows the location of the racing areas.

4. THE COURSES

- 4.1. The diagrams in the Course Option Illustrations section show the courses, including the order in which marks are to be passed.

- 4.1.1. There are three course options. These options are numbered 1 – 3 and will be signaled by a numeric flag no later than the warning signal for the class.

- 4.1.2. In the event of a window start, the course will be signaled by flying the class flag on a staff with the course numerical flag flying below it. This will be displayed BEFORE the Orange flag is displayed. It is OK to hail the Race Committee to confirm your course number.



ILLUSTRATION 3: RACING AREA

Course Option 1

From	To	Description	Leave mark to:	Distance	Bearing
Starting area	A	Freeport Outer Buoy "Fp", Mo	Port	4.0	145°
A	B	Mitchell's Reef (GA - 189)	Port	33.0	62°
B	F	GA 5a, Iso G 30ft 6m Ra Ref	Port	11.0	358°
F	G	GA 11 FL G2.5S		3.0	
				51.0	

Course Option 2

From	To	Description	Leave mark to:	Distance	Bearing
Starting area	A	Freeport Outer Buoy "Fp", Mo	Port	4.0	145°
A	B	Mitchell's Reef (GA - 189)	Starboard	33.0	62°
B	D	Station KXIH - High Island 179A AWOS (Apache Corp)	Port	8.6	75°
B	F	GA 5a, Iso G 30ft 6m Ra Ref	Port	11.0	358°
F	G	GA 11 FL G2.5S		3.0	
				59.6	

Course Option 3

From	To	Description	Leave mark to:	Distance	Bearing
Starting area	B	Mitchell's Reef (GA - 189)	Port	34.3	68°
B	F	GA 5a, Iso G 30ft 6m Ra Ref	Port	11.0	358
F	G	GA 11 FL G2.5S		3.0	
				48.3	

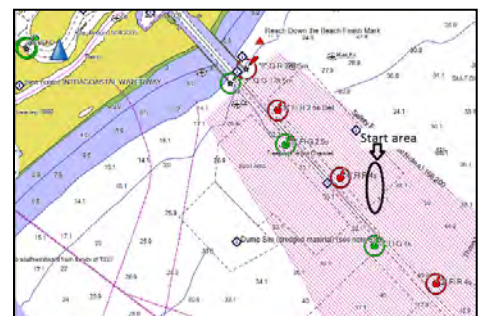
5. MARKS

- 5.1. The starting pin may be an orange floating object (for Rule 26 starts).
- 5.2. The finish pin will be mark G (GALVESTON 11) described below.

The Marks...	Lat/Lon hddd°mm.mmm'	Lat/Lon hddd°mm'ss.s
A Freeport Outer Buoy "Fp", Mo	N28 52.628 W95 14.140	N28 52 37.7 W95 14 08.4
B Mitchell's Reef (GA - 189)	N29 08.589 W94 40.820	N29 08 35.3 W94 40 49.2
C Buckaneer GA 288 C	N28 53.648 W94 42.263	N28 53 38.9 W94 42 15.8
D Station KXIH - High Island 179A AWOS (Apache Corp)	N29 10.800 W94 31.267	N29 10 48.0 W94 31 16.0
E Heald Bank Rig MEHI-H1199-A	N29 08.018 W94 11.758	N29 08 01.1 W94 11 45.5
F GA 5a, Iso G 30ft 6m Ra Ref	N29 19.639 W94 41.264	N29 19 38.3 W94 41 15.8
G GA 11 FL G2.5S	N29 20.556 W94 44.462	N29 20 33.4 W94 44 27.7

6. THE START

- 6.1. TOMA and PHRF races will be started per RRS Rule 26 with one significant exception noted in 6.1.1, below.
 - 6.1.1. If weather conditions are deemed to be unsuitable for a stationary signal boat, or the signal boat is not available, the start will default to the starting window format and we will race our standard course options.
 - 6.1.2. In the event of a starting window: The window "opens" when the first boat crosses the line, no earlier than 8:00 am. It "closes" after 30 minutes have elapsed. Boats may start at any time in this period.
 - 6.1.3. The window will open when the Race Committee (shivering

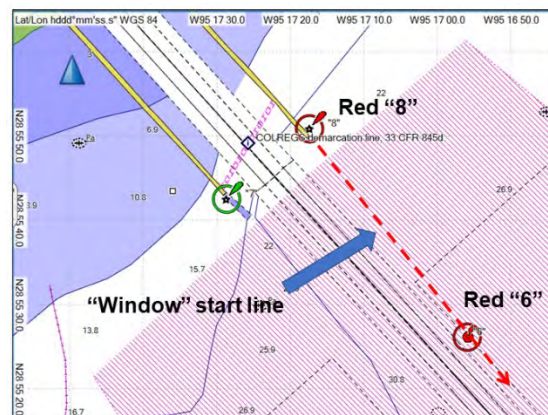


PHRF START AREA

on the end of the jetty) hoists an orange flag on a staff. This will not be before 8:30 am depending on Brazos Pilot's advice.

- 6.2. For a Rule 26 start, the start line will be between a staff flying an orange flag on the signal boat and the course side of the starting pin.

6.2.1. In the event of a starting window: The line will be the extension of the line between Red "8" and Red "6" on the North side of the jetties. You are to cross this line on the far side of Red "6" (i.e. between Red "6" and Red "4"). This is to keep you away from the boulders which form the jetty.



Window start line

- 6.3. For a Rule 26 start, boats whose warning signal has not been made shall avoid the starting area during the starting sequence for other races.
- 6.4. For a Rule 26 start, a boat starting later than 5 minutes after her starting signal will be scored Did Not Start without a hearing. This changes rule A4.
- 6.5. Official time is GPS time.

7. THE FINISH

- 7.1. The finish line will be between an orange tarp on the official signal vehicle on the beach (bearing = 215 °) and the course side of the finish pin WHICH IS Galveston Green 11.
- 7.2. Please attempt to hail the race committee via VHF to alert them to your presence at the mark.
- 7.3. If the race committee is absent when a boat finishes, she should report her finishing time, and her position in relation to the rest of the fleet (as best as she can determine), to the race committee at the first reasonable opportunity.

8. TIME LIMITS

- 8.1. The race shall end at 0800 hours CDT, Sunday 14 May 2023, or when the last yacht finishes, whichever is earlier.
- 8.2. Yachts which have not finished at the expiration of the time limit will be scored Did Not Finish without a hearing. This changes rules 35, A4 and A5.

9. PROTESTS

- 9.1. Protest forms are found in Addendum A to these Sailing Instructions. Protests and requests for redress or reopening shall be delivered to the HYC Office within the appropriate time limit.
- 9.2. Competitors intending to file a protest must notify the race committee (by VHF or 832.428.0785) at the first reasonable opportunity.
- 9.3. For each class, the protest deadline is 10:00 a.m. Sunday 14 May.
- 9.3.1. Should a competitor be unable to reach the HYC office before the protest deadline expires, a photograph of the front and back of the signed protest form will be accepted by the protest committee via e-mail. This email must be time-stamped before the time limit expires. If it is time stamped after the time limit has expired the protest will be found invalid. The signed original of the protest form must be turned in to the protest committee before any hearing can take place. Please see 12.3 – Communications.
- 9.4. All notices will be posted on the HYC Official Notice board in the breezeway next to the HYC offices.
- 9.5. Notices will be posted no later than 30 minutes after the protest deadline to inform competitors of hearings in which they are parties or named as witnesses.
- 9.6. Hearings will be held in the protest room and time as posted by the protest committee.
- 9.7. Notices of protests by the race committee or protest committee will be posted to inform boats under rule 61.1(b).
- 9.7.1. Please see sections 1.13 and 1.14, above.

10. SCORING

- 10.1. The Low-Point Scoring system, Appendix A, shall apply.
- 10.2. In the event of a starting window-style race. Results will be calculated offline. Order of finish will be shown on Regatta Network. In the interests of transparency, actual start / finish times and the associated calculations will be emailed to each competitor.

11. SAFETY REGULATIONS

- 11.1. Prior to the first warning signal, each yacht shall check-in with the Race Committee. The procedure shall be to sail within line of sight of the Race Committee, hail on channel 68 and repeat your sail number, yacht name, and the number of crew on board until acknowledged by the R/C.
 - 11.1.1. Skippers are encouraged to e-mail or text the team roster to the race committee in advance.
- 11.2. Any yacht that starts, and then retires or withdraws before finishing the race shall notify the Race Committee on VHF channel 68, cell phone (832.428.0785) or if that is not possible the Houston Yacht Club office (phone number 281.471.1255). Please do this...

12. COMMUNICATIONS

- 12.1. The official communications channel is VHF channel 68.
- 12.2. The Race Committee will also be available by telephone at 832.428.0785 (PRO) or 281.910.0942 (Chief Judge).
- 12.3. Email communications:
 - 12.3.1. Protest Committee: jjgrills@gmail.com
 - 12.3.2. Race Committee: billvanrav@gmail.com
- 12.4. While offshore, all yachts are encouraged to monitor channel 16 and to communicate potential hazards to other racers. This changes Rule 41.
- 12.5. All yachts should also monitor VHF Channel 13 when in the vicinity of the Houston Ship Channel for commercial traffic concerns.

13. PRIZES

- 13.1. The Carroll Blanchard perpetual trophy will be awarded to the boat finishing first in the Spinnaker Class.
- 13.2. Trophies will be awarded based on final registration volumes.
- 13.3. Registrations received after the trophy order has been placed shall be awarded IOU's in place of the actual trophy.
- 13.4. The race committee shall deliver owed trophies at a mutually agreeable time and place at a later date.
- 13.5. Prizes will be awarded Sunday May 14 at 1:00 p.m. at the HYC Bar.

14. INSURANCE

- 14.1. Each participating boat shall be insured with valid third-party liability insurance with a minimum cover of \$300,000 per incident or the equivalent.

15. USE OF ENGINES

- 15.1. Engines may be used in an emergency. After the emergency is resolved, competitors are to return to the closest point possible at which the engine was engaged and continue the race
- 15.2. Engines may be used to charge batteries
- 15.3. Use of engines is prohibited except as permitted above.

16. PROHIBITED EQUIPMENT

1. Use of electric winches is prohibited except as stated in section **1. RULES FOR BOTH DAYS** 1.2 above.
2. Use of a self-steering system is prohibited except as stated in section **1. RULES FOR BOTH DAYS** 1.3 above.

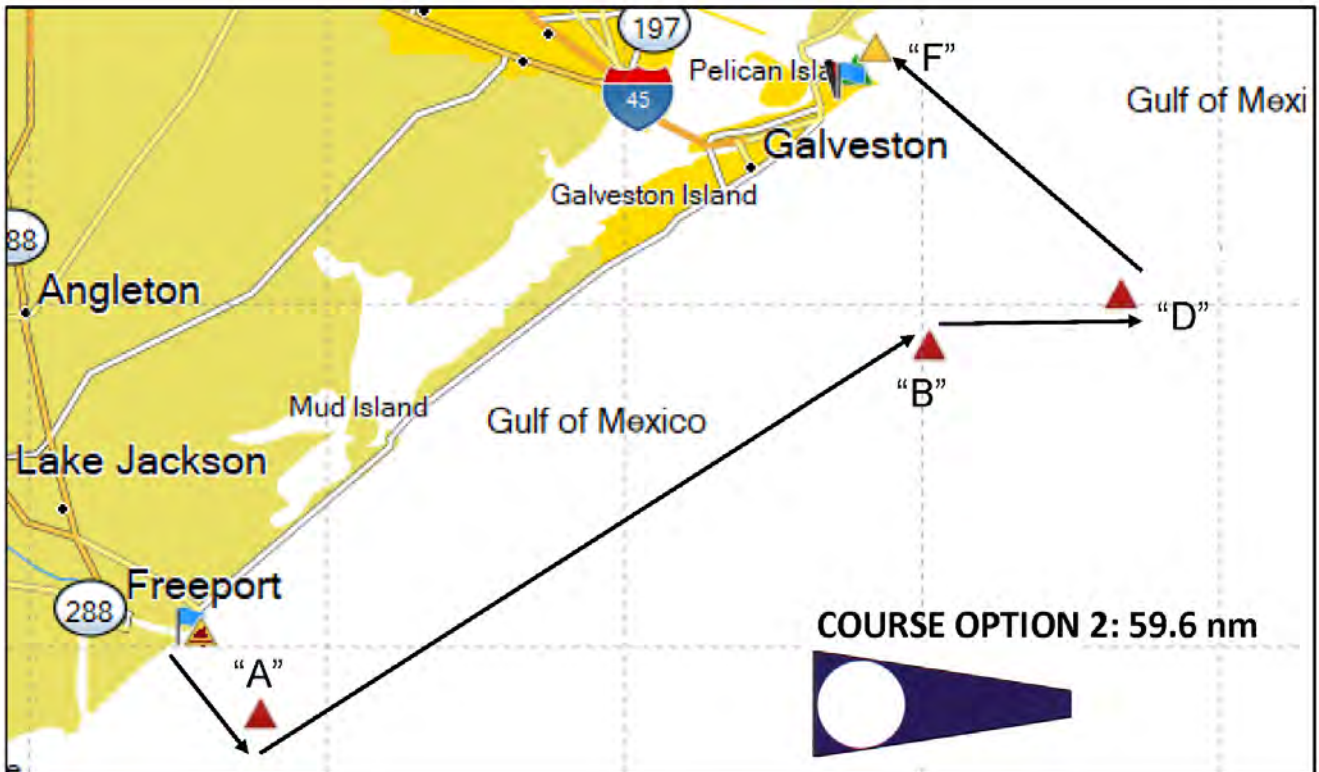
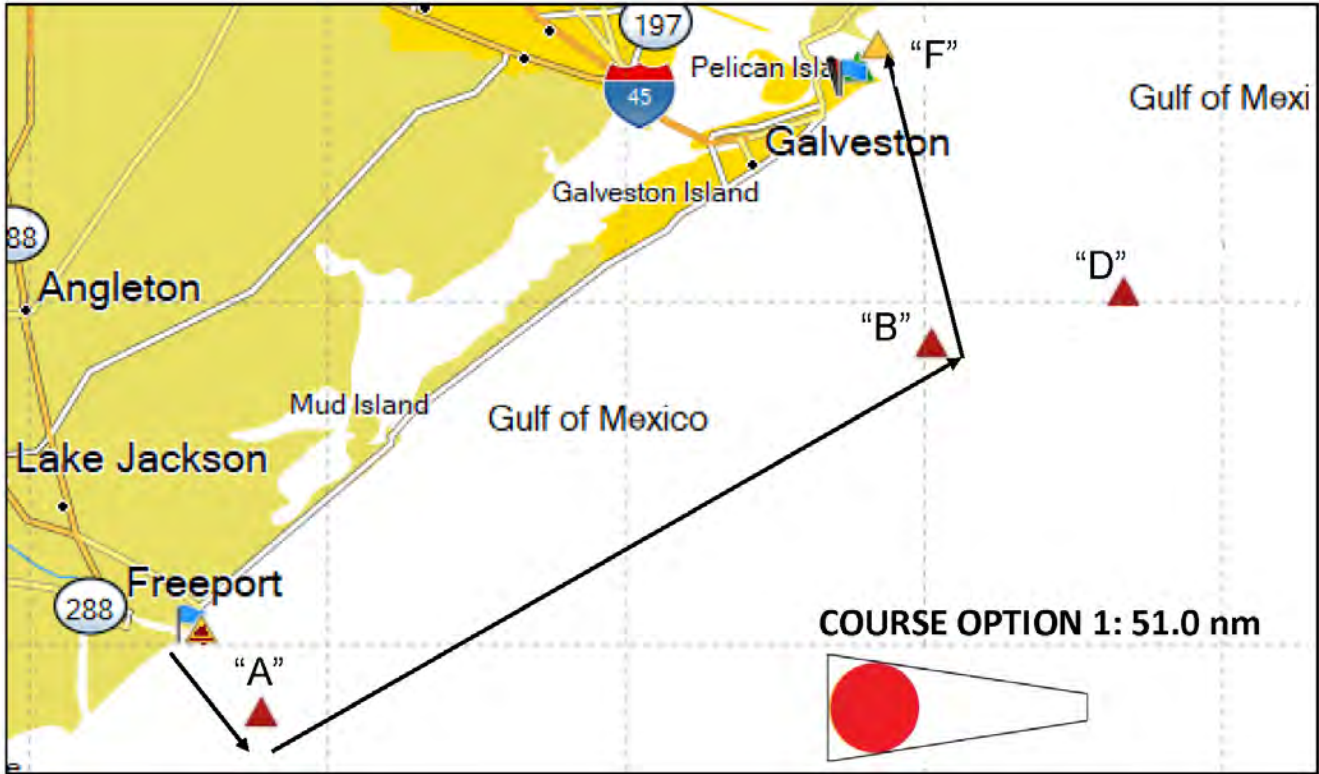
17. HANDICAPS

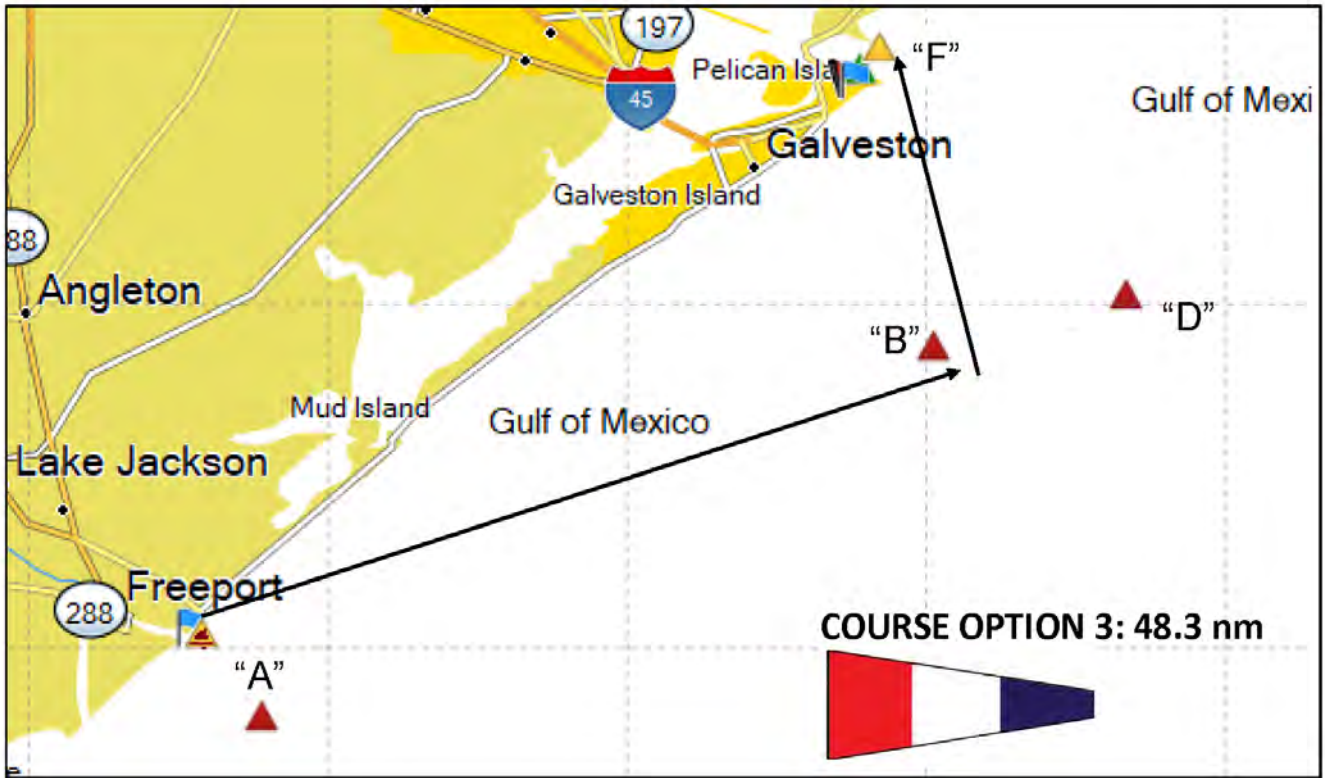
- 17.1. All PHRF Non-Spinnaker class yachts must be handicapped by PHRF Galveston Bay for 2023.
- 17.2. All TOMA class yachts must be handicapped by the Texas Offshore Multihull Association.



THE 2023 REACH DOWN THE BEACH AND QUANTUM CUP REGATTA SAILING INSTRUCTIONS

18. COURSE OPTION ILLUSTRATIONS





ADDENDUM "A" NEXT PAGE



HEARING REQUEST

for protests, requests for redress, and reopening

FOR COMMITTEE USE

Time & date received _____

Rec'd by _____

Protest time limit _____

Filing # _____

Race # Day/Date of Race

Event/Series

--	--	--

Type of Hearing

Protest

Redress

Reopening

Boat or Committee Protesting or Requesting

Making allegation, claim, or request

Boat (sail # / name)

-OR- Committee

Represented by

Mobile

Email

Protestee(s) or Committee/Body

Alleged to have broken a rule, or made an improper action or omission

Boat (sail # / name)

Boat (sail # / name)

Boat (sail # / name)

Boat (sail # / name)

-OR- Committee/Body

For a protest only, informing the protestee How did you inform the other boat of your intent to protest?

If "Yes" when (for each)?

By hailing?

No Yes

Words used?

By displaying a red flag?

No Yes

Some other way?

No Yes

Where / how?

The incident

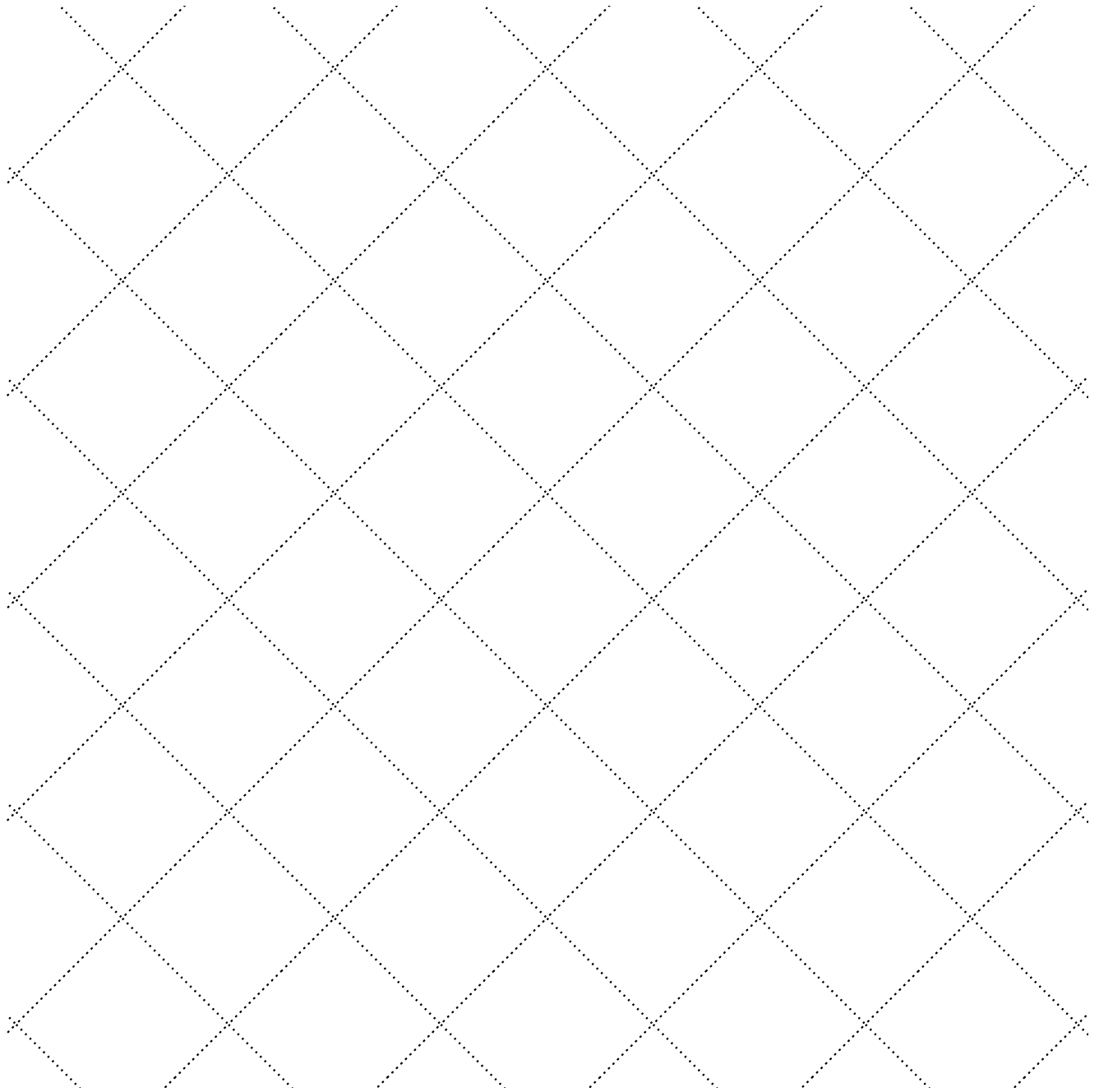
For a protest: When and where did it happen? (e.g. 1/2 way along first upwind leg, pre-start just below pin, etc.)

For protests, please describe the incident. For redress or reopening, please state the reasons.

Rules alleged to have been broken

For either a protest or a request for redress or reopening (if relevant)

Diagram Include wind and current (**or** continue the description of the incident and/or reasons)



Witnesses Please list by name

USE ONLY TO WITHDRAW FILING

I request to withdraw this filing _____
Signature of representative

Print name

Filing withdrawal approved _____
Signature of PC member

Print name