



2023 San Diego Coastal Cup

San Diego Pursuit to Mission Bay

Added Last Year!

Fun Race for San Diego Yachts to Mission Bay • Friday, May 26

Butler Invitational

Mission Bay to Oceanside • Saturday, May 27

Oceanside to San Diego Race

Oceanside to SD Bay • Sunday, May 28



Hosted by **MBYC, OYC, & SWYC**

PHRF San Diego Annual Championship Event

Entry Deadline is 1800, Wednesday, May 24, 2023

Limited to 50 Yachts

Sailing Instructions

SWYC Regatta Co-Chairs Brad Alberts 619.757.0684
Don Garber 619.743.6601

MBYC Regatta Chair – Kyle Henehan 760.703.9950
MBYC PRO - Craig Storms 760.705.4087

OYC Regatta Chair - Mark Mallaby 858.382.1934
SWYC PRO/Event Protest Chair – Colleen Cooke
sailorcookie@cox.net

SWYC Event Scorer – Shelly Raiming

[DP] – Discretionary Penalty • [NP] – Not Protestable

All Appendix/Illustrations at the end are not considered part of the SI's and are advisory only

1. RULES

- 1.1. The regatta will be governed by the rules as defined in The Racing Rules of Sailing.
- 1.2. When a yacht sailing under the RRS meets a yacht that is not, she shall comply with the International Regulations for Preventing Collisions at Sea.
- 1.3. All racers shall adhere to the defined Naval Protection Zone (33 C.F.R. 165.2030).
- 1.4. Sail numbers on all sails flown must comply with US Sailing RRS for size, contrast,

and general placement. They must also agree with the numbers indicated on the entry form.

- 1.5. Yachts that go aground, get caught in kelp, or need to move to avoid a vessel outlined in Section 1.8 below may use their engines provided the yacht does not gain a significant advantage in the race. This modifies and includes RRS 42.3.
- 1.6. [DP] Discarding biodegradable bands into the water when setting a spinnaker may be less than disqualification. Racers remain responsible for compliance with RRS 47, and all applicable state and federal laws.
- 1.7. This event shall also be governed by the San Diego PHRF Class Rules.
<https://www.phrfsandiego.org/documents/PHRFClassRules.pdf>
- 1.8. [DP] NAVAL and CRUISE SHIP PROTECTION ZONE: A naval protection zone exists in a radius of 500 yards (CFR 165.2015) around U.S. naval vessels greater than 100 feet in length, except when the large naval vessel is moored or anchored within a restricted area. All vessels within a naval vessel protection zone shall operate at the minimum speed necessary to maintain a safe course and shall proceed as directed by an official patrol, and when within such zone, no vessel is allowed within 100 yards of a large U.S. naval vessel (CFR 165.2030). No vessel is allowed within 100 yards of a cruise ship (CFR 165.1108).

2. NOTICE TO COMPETITORS

- 2.1. Notices to competitors will be posted on the regatta website prior to 0830 hours on Friday, May 26 for the **San Diego Pursuit to Mission Bay**.
<https://www.regattanetwork.com/event/26342>
- 2.2. Notices to competitors will be posted on the regatta website prior to 0830 hours on Saturday, May 27 for the **Mission Bay to Oceanside Race**.
<https://www.regattanetwork.com/event/26342>
- 2.3. Notices to competitors will be posted on the regatta website prior to 0830 hours on Sunday, May 28 for the **Oceanside to San Diego Race**.
<https://www.regattanetwork.com/event/26342>
- 2.4. Official Class assignments will be established and posted on the regatta website no later than 0900 on Friday, May 26, 2023. Provisional assignments MAY be posted earlier.

3. CHANGES IN SAILING INSTRUCTIONS

- 3.1. **Ashore:** Any change in the Sailing Instructions for the **Butler Race to Oceanside** will be posted on the regatta website no later than 0900 hours on Saturday, May 27, 2023. Any change to the Sailing Instructions for the **Oceanside to San Diego Race** will be posted on the regatta website no later than 0900 hours on Sunday, May 28, 2023.
- 3.2. **Afloat:** Any change in the Sailing Instructions made afloat will be communicated via **VHF Channel 68** and/or loud hailer per RRS 90.2.

4. SCHEDULE OF RACES

- 4.1. The **San Diego Pursuit to Mission Bay Race** is scheduled for Friday, May 26.
Time of the **First Warning will be 1255 hours.**
- 4.2. The **Butler Invitational Race** is scheduled for Saturday, May 27.
Time of the **First Warning will be 1140 hours.**

- 4.3. The **Oceanside to San Diego Race** is scheduled for Sunday, May 28.
Time of the **First Warning will be 1055 hours.**

5. CLASSES, CLASS FLAGS AND STARTING ORDER
 - 5.1. Class Assignments, Class Flags and Starting Order will be established and posted on the regatta website no later than 1800 Thursday, May 25, 2023, and shall be considered an amendment to the sailing instructions.
 - 5.2. Class flags will be displayed from the yacht's backstay and be provided by the yacht's owner. Yachts without a backstay shall display their pennants in a prominent manner on the stern. All yachts must display their assigned class flag.
 - 5.3. ~~The OA retains the authority to provide/modify ratings to yachts that don't have current local PHRFSD certificates.~~

6. CHECK-IN
 - 6.1. For **Saturday's** and **Sunday's** races, eligible yachts complete their entry by checking in with the RC boat prior to their First Warning signal. Yachts checking in shall pass the RC boat to starboard and hail with **sail number, class, and number of crew onboard**. Check-in will be complete only when RC boat responds with that information. RADIO CHECK-IN is also permitted. Yachts are considered checked in over VHF ONLY when RC confirms via **VHF 68**.
 - 6.2. Yachts who do not receive RC confirmation must verify their check-in with the RC vessel prior to their Warning Signal.
 - 6.3. Check-in will not be accepted during start sequences after the Warning for each race.
 - 6.4. Check-in is NOT required for **Friday's Pursuit Race**.

7. RACING AREA • *Use US Geodetic Chart Numbers 18740 (5101) & 18772 (5107). All buoys are USCG unless noted*
 - 7.1. For the **San Diego Pursuit to Mission Bay Race** - The racing area is between San Diego Bay Buoy 17 area, offshore La Jolla & Mission Bay entrance area.
 - 7.2. For the **Butler Race to Oceanside** - The racing area is between Mission Bay entrance area, offshore La Jolla & north San Diego County and the Oceanside Pier.
 - 7.3. For the **OYC to San Diego Race** - The racing area is between Oceanside Harbor entrance area, offshore north San Diego County, La Jolla, and the San Diego Bay entrance buoy SD.

8. THE COURSES • *Use US Geodetic Chart Numbers 18740 (5101) & 18772 (5107). All buoys are USCG unless noted*
See Appendix A
 - 8.1. Friday: **The San Diego Pursuit to Mission Bay Race:**
 - All classes will sail the same course:
 - Start in the vicinity of Buoy 17
 - Round Buoy 3 to starboard
 - Finish inside the Mission Bay channel at the 5 mph markers**NOTE 1: Distance for handicap purposes is 12.5 nautical miles**
 - 8.2. Saturday: **The Butler Invitational** - All classes will sail the same course:
 - Start -- approximately **1/2 nm NW** of the Mission Bay - *see Appendix D*
 - Leave Mark A (Orange Tetrahedron approximately 1nm upwind from the start-line) to starboard;
 - Finish off Oceanside Pier (approximately 250 yards due west of pier) - *see Appendix E*
 - **NOTE 1: Distance for handicap purposes is 27.7 nautical miles**
 - 8.3. Sunday: **The Oceanside to San Diego Race** - All classes will sail the same course:

- Start – all yachts will start approximately 250 yards due west of the Oceanside pier -
see Appendix E
-
- Sail to the SD channel entrance buoy (SD)

NOTE 1: Distance for handicap purposes is **34.8 nautical miles**.

9. THE START

- 9.1. **Friday: San Diego Pursuit to Mission Bay Race** All classes will sail the same course-
See Appendix B

Start: between the RC boat or inflatable dinghy taken to starboard and Buoy 17 at the port (pin) end.

- The start will be conducted in accordance with RRS 26, except as modified by these sailing instructions. Starting times will be staggered according to PHRF handicaps.
- **Audible Starting Signals found in RRS Appendix U may be used.**
- Individual yacht pursuit starting times will be included in an Amendment to the SI's no later than 1800 Thursday May 25.
- The **Warning Signal will be at 1255**. The first start will be at 1300. A horn will be sounded every 10 minutes after the first start.
- Each yacht's start time shall be signaled by a **whistle sound** at their designated start time.
- Starting Penalties: Rule 30.1 ("**I-Flag Rule**") will apply to all starts.
 - The Starting Line will be between a staff displaying an Orange Flag on the RC Signal Boat at the starboard end and Buoy 17 at the port end of the line
 - As a courtesy, the RC may announce any changes on **VHF Channel 68**
 - Yachts whose warning signal has not been made shall avoid the starting area. Yachts not in their Warning period and observed obstructing fellow racers may be penalized by the RC without a hearing. This changes RRS 63.1.
 - A yacht's Warning Signal shall be 4:00 minutes prior to her start time.

Failure of a yacht to hear a hail or failure of the RC to hail shall not be grounds for redress. It is the responsibility of each yacht to *listen to the sound signals* and start properly.

- 9.2. **Saturday: The Butler Invitational** – All classes will sail the same course-*See Appendix D*
Start: all yachts start approximately **1/2 nm on a 300° bearing** off the Mission Bay north jetty-
See Appendix D.

A• The Starting Line will be between a staff displaying an Orange Flag on the RC Signal Boat at the starboard end and a yellow mark at the port end of the line. (The yellow mark at Mission Bay will be a tetrahedron) A distance buoy may be streamed aft of the RC boat and, if present, shall be considered part of the RC boat. For purposes of RRS 31.1 (Touching A Mark), this buoy is to be considered a permanent part of the starting mark.

- The Warning signal for each class will be five (5) minutes prior to its start. **A 5:00 min gap will be added between the start of one class and the Warning of the next class.** As a courtesy, VHF transmission of the start sequence may be made. The absence of VHF calls shall not grounds for redress.

- Yachts whose warning signal has not been made shall avoid the starting area. Yachts not in their Warning period and observed obstructing fellow racers may be penalized by the RC without a hearing. This changes RRS 63.1.
- The class starting order will be included in the Class Break amendment.

9.3. **Sunday: The Oceanside to San Diego race**- All classes will sail the same course-See *Appendix E*

- The Starting Line will be between a staff displaying an Orange Flag on the RC Signal Boat at the starboard end and a yellow mark at the port end of the line. (The yellow mark at Oceanside will be a tetrahedron) A distance buoy may be streamed aft of the RC boat and, if present, shall be considered part of the RC boat. For purposes of RRS 31.1 (Touching A Mark), this buoy is to be considered a permanent part of the starting mark.
- The Warning signal for each class will be five (5) minutes prior to its start. A 5:00 min gap will be added between the start of one class and the Warning of the next. As a courtesy, VHF transmission of the start sequence may be made. The absence of VHF calls shall not be grounds for redress.
- Yachts whose warning signal has not been made shall avoid the starting area. Yachts not in their Warning period and observed obstructing fellow racers may be penalized by the RC without a hearing. This changes RRS 63.1.

10. RECALLS

- 10.1. Individual recalls shall be signaled in accordance with RRS 29.1. The RC may attempt to notify premature starters either by loud hailer or VHF Channel 68. The failure of any yacht to hear her hail, the timing of the hail, and/or the order of the hail Shall Not be grounds for redress. This changes RRS 62.1.
- 10.2. General Recalls will be pursuant to RRS 29.2.
- 10.3. Under World Sailing Test Rule DR21-01, change the definition Start as follows: **Start**, A yacht starts when her hull, having been entirely on the pre-start side of the starting line and having complied with Rule 30.1, if it applies, any part of her hull crosses the starting line from the pre-start side to the course side either
 - (a) at or after her starting signal, or
 - (b) during the last 15 seconds before her starting signal.
- 10.4. When a yacht starts in accordance with item (b) of the definition Start, she may return to the pre-start side of the line to comply with item (a) of the definition of Start, but, if she does not, she shall receive a Scoring Penalty calculated in accordance with RRS 44.3(c).

11. WITHDRAWAL

- 11.1. A yacht that retires from any of the three Coastal Cup races must notify the RC before leaving the course or call the RC on VHF 68 or 858.335.1822, MBYC at 858.488.0501, or OYC at 760.586.6902 or 619.757.0684. Failure to do so shall result in disqualification from this race and possible rejection of entry for subsequent races. No refund of entry fees for disqualification.

12. THE FINISH

- 12.1. **Friday: San Diego Pursuit to Mission Bay Race** – proper finish will be inside the Mission Bay channel at the first set of 5 mph markers ***approx .6nm from jetty entrance*** –

see Appendix C

NOTE 1: There will be no RC Boat on station at the finish location. **The skipper shall take the time when the yacht crosses the above-described finish line (GPS Time)** and send an e-mail report to jbalberts1@gmail.com or text to 619.757.0684 within 30 minutes of finishing.

Report in your email: Please ensure your **yacht name is in the subject line of the email!**

Sail #: _____, Yacht Name: ____, Class: _____,

Finish Time (GPS): hr: _____ min: _____ sec: _____,

Your name and telephone number _____,

The sail number and the time ahead of and behind the nearest finishing yacht(s) _____.

12.2. **Saturday: Butler Invitational Race** When the lead yacht of the leading class is within two hours of finishing, she is requested to so advise the RC via **VHF 68**. See Appendix E

- The finish area for the **Butler Invitational** shall be approximately 250 yards directly west of the Oceanside Pier.
- The Finish Line shall be between a staff displaying a blue flag on the RC boat at the port end and a yellow tetrahedron on the starboard end (or south end of the Oceanside Pier if a mark is not present).
- If no finish mark is present, pass within 3 boat lengths from the RC boat. A proper finish will leave the RC boat to port - See Attachment E
- All finishing yachts shall report the following information in their e-mail report to shelly.raming@gmail.com or text to **858.232.7725**. Please ensure your yacht's name is in the subject line of the email!

Sail #: _____, Yacht Name: ____, Class: _____,

Finish Time (GPS): hr: _____ min: _____ sec: _____,

Your name and telephone number _____

The sail number and the time ahead of and behind the nearest finishing yacht(s) _____.

12.3. **Sunday: Oceanside to San Diego Race** – See Appendix G

- The finish line shall be when a yacht is **directly WEST of the SD Channel Entrance Buoy, facing south and abeam the buoy within three (3) boat lengths**.
- Yachts shall take their own finish time when they are directly west of Buoy SD within three (3) boat lengths.
- Times taken must be **corrected to GPS time** and emailed within 30 minutes of finishing. See 12.4 below.

All finishing yachts shall report the following information in their e-mail report to shelly.raming@gmail.com or text to **858.232.7725**. Please ensure your yacht's name is in the subject line of the email!

Sail #: _____, Yacht Name: ____, Class: _____,

Finish Time (GPS): hr: _____ min: _____ sec: _____,

Your name and telephone number _____

The sail number and the time ahead of and behind the nearest finishing yacht(s) _____.

PENALTY SYSTEM:

12.4. RRS V1, *Penalty at the Time of the Incident*, shall apply.

12.5. RRS V2, *Penalty Taken After a Race*, shall apply.

13. TIME LIMIT

13.1. For the **San Diego Pursuit to Mission Bay** - Yachts finishing after **1700 hours** will be scored Did Not Finish (DNF). This modifies RRS 35.

13.2. For the **Butler Invitational** - Yachts finishing after **1800 hours**. hours will be scored Did Not Finish (DNF). This modifies RRS 35.

13.3. For the **Oceanside to San Diego** - Yachts finishing after **2000** hours will be scored Did Not Finish (DNF). This modifies RRS 35.

14. PROTESTS

14.1. Protests shall be initiated in compliance with RRS 61, except as amended by these Sailing Instructions.

14.2. A yacht intending to protest shall report her intentions and the yacht(s) being protested to the RC boat on station upon finishing or retiring and obtain RC acknowledgment. Radio reports of protests are only accepted from yachts that are retiring from the race.

14.3. For the **San Diego Pursuit to Mission Bay** - protesting yachts shall lodge their written protests within one hour of *El Sueño* raft-up time at Mariner's Cove. Protests will be held onboard of *El Sueño*. Protest Committee members TBD from Friday's racers.

14.4. For the **Butler Invitational**, protesting yachts shall lodge their written protests within one hour of the RC boat docking time, which will be posted prominently in the bar and Notice Board upstairs at OYC. If the RC finish boat is not on station, finishing or retiring yachts shall lodge protests at the OYC Bar by 1900 hours the day of the race (7:00pm). Notice of protest and yachts involved, including names of witnesses, if known, and the schedule of hearings will be posted on the RC Bulletin Board adjacent to the OYC Bar within 30 minutes after the protest time ends.

- Protests will be heard in the approximate order of receipt immediately following the race or at a later date and time as coordinated by the Protest Chairman.

14.5. For the **Oceanside to San Diego Race** protesting yachts shall lodge their written protest by emailing SWYC Race Committee at sailorcookie@cox.net not later than 30 minutes after they reach their slip or 1845, whichever is earlier. RC boat docking time will be posted on the RC bulletin board adjacent to the OYC Office. Notice of Protest and yachts involved and the schedule of hearings will be posted on the RC bulletin board within 30 minutes after expiration of protest time.

- Protests will be heard in the approximate order of receipt immediately following the race or at a later date and time as coordinated by the Protest Chairman.

15. PROTEST ARBITRATION

15.1. Arbitration will be available according to Appendix T for breaches of rules of Part 2 where there is no damage or injury. Protests not resolved through arbitration or Request for Redress will be referred to the Protest Committee for hearing.

16. SCORING FOR EACH RACE

16.1. This series shall be scored as provided in the Notice of Race.

- 16.2. Each race will be scored with the Low-Point Scoring System as provided in RRS Appendix A.
- 16.3. One race is required to be completed to constitute this series.
- 16.4. This is a PHRF San Diego Annual Championship Series event. Only those yachts sailing under a PHRF San Diego Rating Certificate will have this race scored for the Annual Series.
- 16.5. PHRF Classes shall be scored with their Random Leg Course Ratings (RLC), including Area G ratings or those assigned by the OA, **using time on distance**.
- 16.6. Yachts will enter with their PHRFSD rating if they have one. PHRF entries with only PHRF Southern California ratings will be scored using PHRF Southern California RLC ratings after review of the OA.
- 16.7. Identical yachts will use the PHRF San Diego rating if any yacht uses the PHRF San Diego rating.
- 16.8. The MBYC Butler Fleet will be scored using ratings assigned by the Organizing Authority and posted as discussed in 5.1, above.
- 16.9. SWRF, SDCA and ORR yachts will start and race in their assigned PHRF classes. Their respective group scores will be extracted to create SWRF, SDCA and ORR results. Spinnaker ratings shall be used.

17. SCORING FOR THE SAN DIEGO COASTAL CUP

- 17.1. Friday's **San Diego Pursuit to Mission Bay** will be scored separately and will not be scored with Saturday's and Sunday's races.
- 17.2. The scoring for the San Diego Coastal Cup will be the combination of the results of the **Butler Invitational** and the **Oceanside to San Diego Race**.
- 17.3. One race is required to be completed to constitute a series.
- 17.4. A yacht's series score will be the total of her race scores.
- 17.5. Tiebreakers will be decided based on RRS Appendix A8 for combined race scores.
- 17.6. Any yacht that changes divisions will not be considered for the San Diego Coastal Cup Results. Any yacht that is scored DNS or DNF will be awarded their classes last place corrected time plus one hour for the purposes of the tiebreaker math.

18. SAFETY

- 18.1. Yachts shall comply with the Race Safety Requirements listed in the Notice of Race and outlined below.
- 18.2. International Regulations for Preventing Collisions at Sea or government right-of-way rules shall replace Part 2 of RRS between sunset and sunrise.
 - US Sailing NEARSHORE Safety Equipment is required in addition to all required United States Coast Guard boating requirements.
 - US Sailing NEARSHORE Requirements can be found here: https://www.ussailing.org/wp-content/uploads/2018/03/US_SER_2018.0_Categories.pdf
- 18.3. The **Race Committee (RC) will be monitoring VHF Channels 16 & 68**. Each yacht shall monitor VHF Channel 68 from the time the yacht checks in with the RC until clear of the start line. Each yacht shall monitor VHF Channel 16 from that point until she finishes. **All race related communication prior to the last start will take place on VHF Channel 68**. Should a yacht need to contact RC after the start, the yacht should hail the RC on VHF Channel 16; RC will then acknowledge and request the hailing yacht switch and answer on VHF Channel 68 for all non-emergency

communication.

- 18.4. **In any sort of an emergency aboard while racing, contact the USCG on VHF 16 first.**

19. AWARDS

- 19.1. For the **San Diego Pursuit to Mission Bay** – the membership of MBYC invites all participants to enjoy the hospitality of the MBYC Clubhouse after the race on Friday evening. Trophies for winners of the **San Diego Pursuit to Mission Bay** - will be awarded at MBYC Front Deck area as soon as possible following the day's racing.
- 19.2. For the **Butler Invitational** – the membership of OYC invites all participants to enjoy the hospitality of the OYC Clubhouse after the race on Saturday. Trophies for Division winners of the Butler will be awarded at OYC bar area as soon as possible following the day's racing.
- 19.3. For the **Oceanside to San Diego Race** and **the San Diego Coastal Cup** – the membership of SWYC invites all participants to enjoy the hospitality of the SWYC clubhouse after the race on Sunday. Trophies will be awarded at the SWYC Bar area as soon as possible following the day's racing, approximately 1900.

20. DISCLAIMER OF LIABILITY

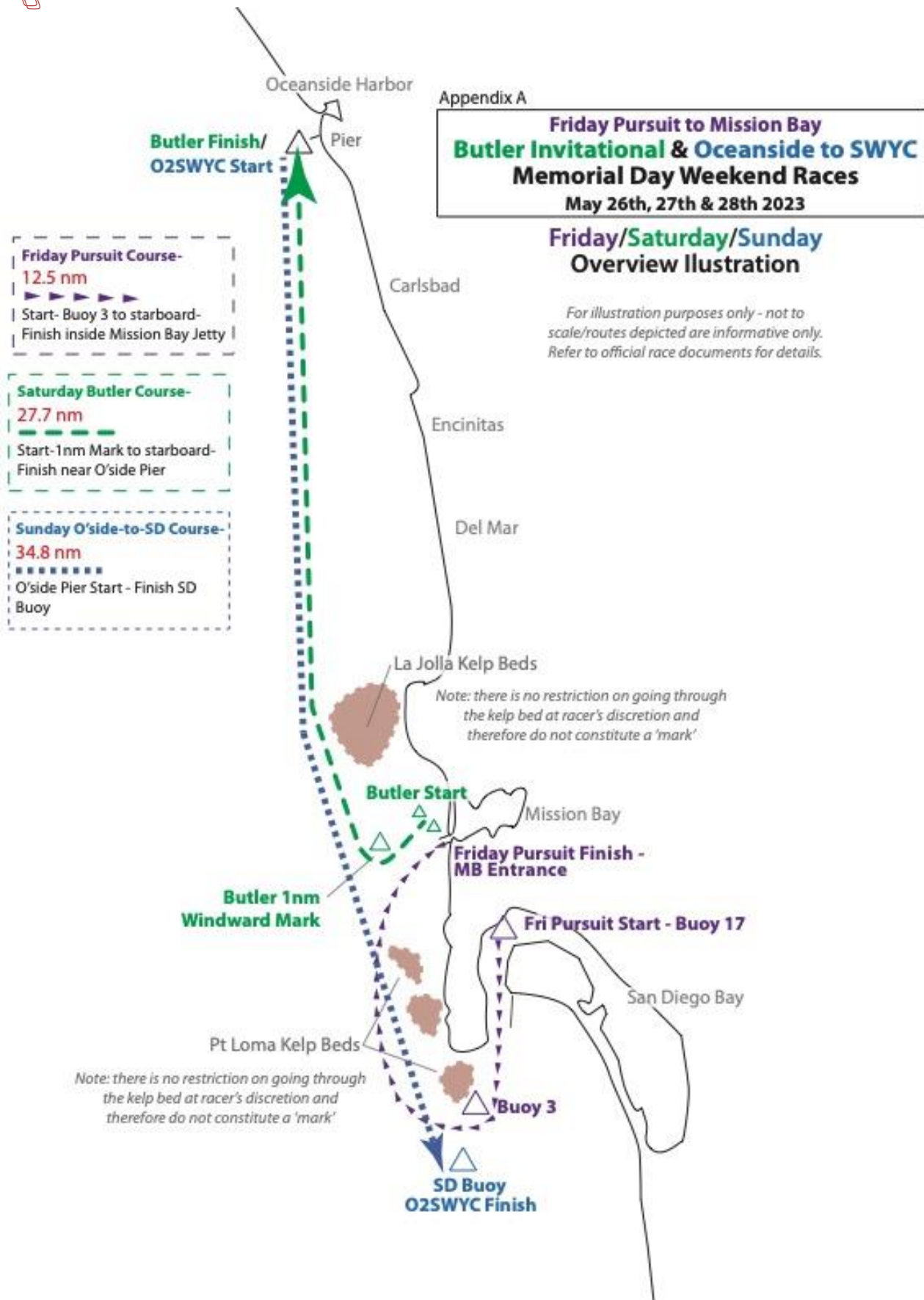
- 20.1. See RRS rule 3, **Decision to Race**. The organizing authority will not accept any liability for material damage or personal injury or death sustained in conjunction with or prior to, during, or after the regatta.

21. FURTHER INFORMATION

- 21.1. Slip fees at Oceanside Harbor are included with your entry fee.

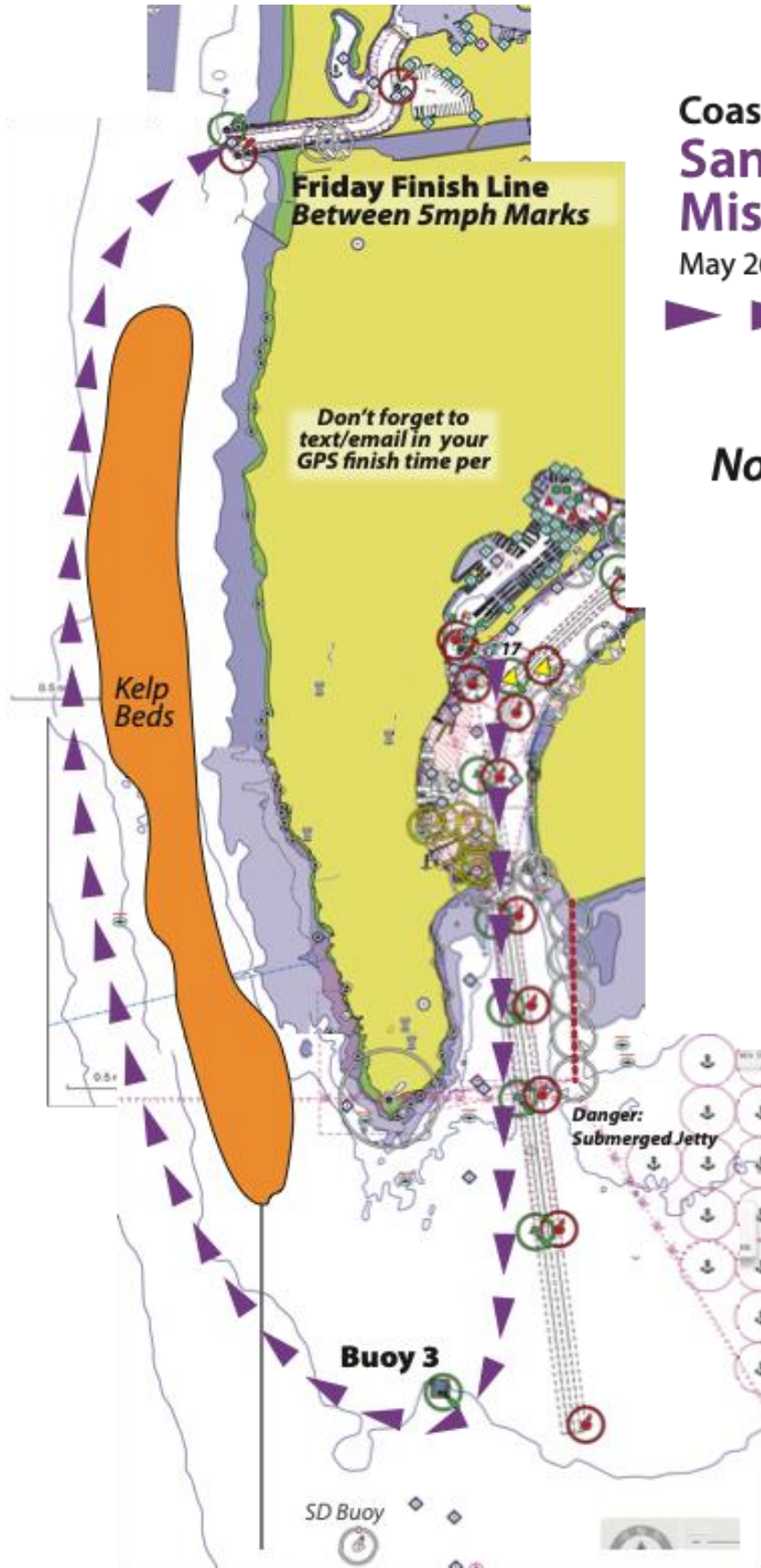


Coastal Cup Overall Detail of all Three Races



B

Race Detail for San Diego Pursuit to Mission Bay



Coastal Cup Courses San Diego Pursuit to Mission Bay

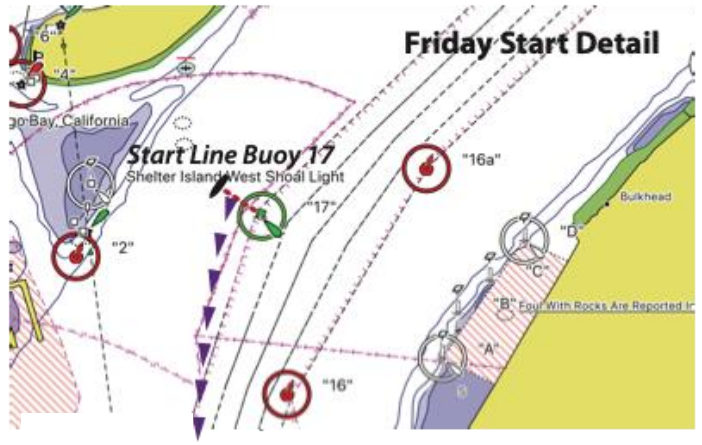
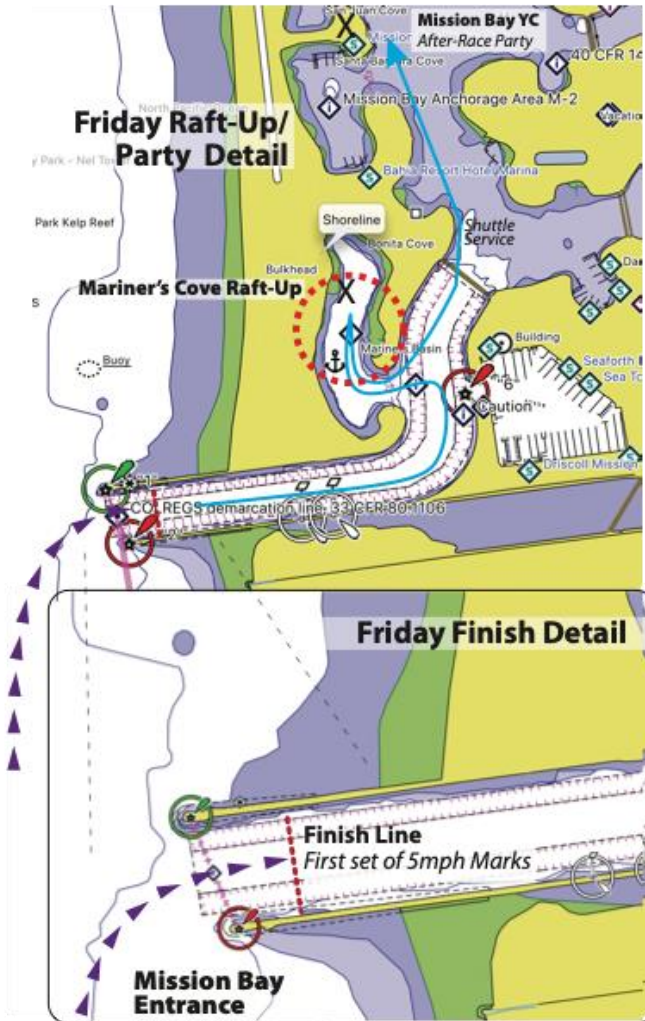
May 26th, 2023

▶▶ **Course**
All boats

Not for Navigation



Start/Finish Detail for San Diego Pursuit to Mission Bay Race



Appendix C
Coastal Cup Courses
Friday Pursuit Race to MB Detail
 May 26th 2023

Start/Finish & Post-Race Details
Raftup at Mariner's Cove
 MBYC will provide shuttle service
 from Marnier's Cove to MBYC

**Don't forget to text/email in
 your GPS finish time per SI's**

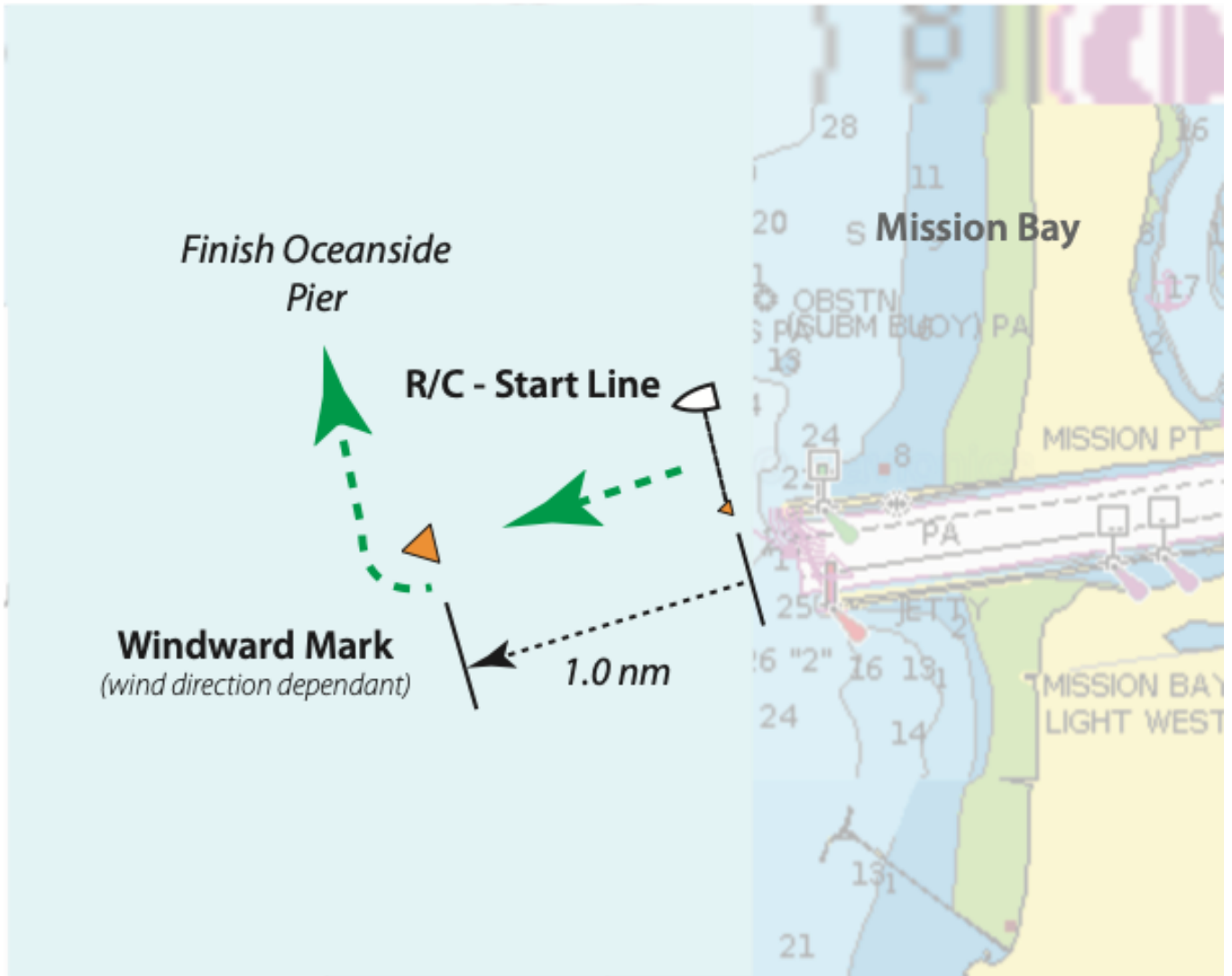


Coastal Cup Mission Bay Start Detail

Appendix D

Coastal Cup Courses Memorial Day Weekend Races Mission Bay Start Detail May 27th 2023

For illustration purposes only - not to scale/routes depicted are informative only. Refer to official race documents for details.





Coastal Cup Mission Bay to Oceanside Finish Detail

Coastal Cup Courses
Memorial Day Weekend Races
Mission Bay to Oceanside
Finish Detail
May 27th 2023





Coastal Cup Oceanside Raft-Up Detail





Coastal Cup Oceanside to San Diego Finish Detail

Appendix E

Coastal Cup Courses Memorial Day Weekend Races OCN to SWYC Finish Detail May 28th 2023

For illustration purposes only - not to scale/routes depicted are informative only. Refer to official race documents for details.

