

## APPENDIX B

May 28, 2023

Day 2

**Racing Area:** The racing area will be off the windward and north shores of Oahu.

**The Course:** The course will be: Start – Mark X to port - Exit Kaneohe Bay via the Main Ship Channel - Finish at entrance to Haleiwa Harbor – Approx. 33 NM.

**Marks:** Mark X will be multi-ring inflatable with blue pontoons or yellow buoy set approximately ½ mile windward of the start line. Pin end of start will be multi-ring inflatable with blue pontoons or yellow buoy. Routine movement of autonomous marks will not be grounds for redress. This includes minor readjustments, marks returning to station after having been pushed away by a competitor, and collisions with marks that are not actively marks of the course presuming these collisions do not cause damage. This changes RRS and NOR.

**Signals:** Class Flags as described below will be displayed for each class's Warning Signal.

PH A & B	Green or Black with #1
Multihulls	Blue or Blue with M
Cruising	Light Green with C

**The Start:** The starting line will be between a multi-ring inflatable buoy with blue pontoons and flag or yellow buoy and the staff of an orange flag on the Race Committee Boat located inside the primary racing area of Kaneohe Bay near Mokapu and Coconut Island. A boat shall not start later than 10 minutes after her starting signal.

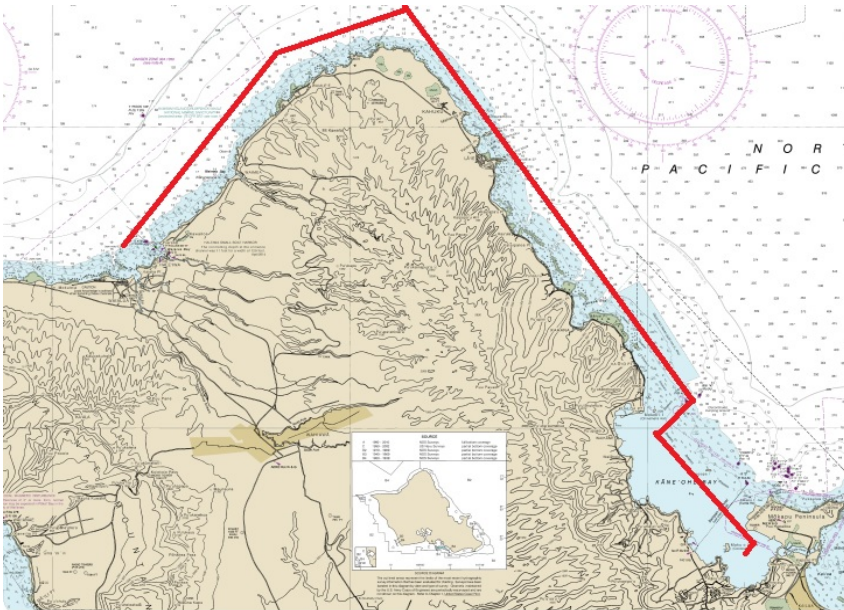
<u>Class</u>	<u>Warning</u>	<u>Start</u>
PH A, B	0855	0900
Multihulls & Cruising	0905	0910

**The Finish:** The finish is at the entrance to Haleiwa Harbor. The finish line is inside Haleiwa Harbor buoy R2 with R2 to starboard and at a bearing to land of 135 degrees magnetic. If Race Committee Boat is on station, boats may communicate on **VHF Channel 68** to verify their finish times. If Race Committee Boat is not on station boats shall finish and report their finish times (name of boat, HST time of day of finish in HH:MM:SS) to the Race Committee via text to Gary Evoniuk at (919) 599-3111 within one hour of finishing.

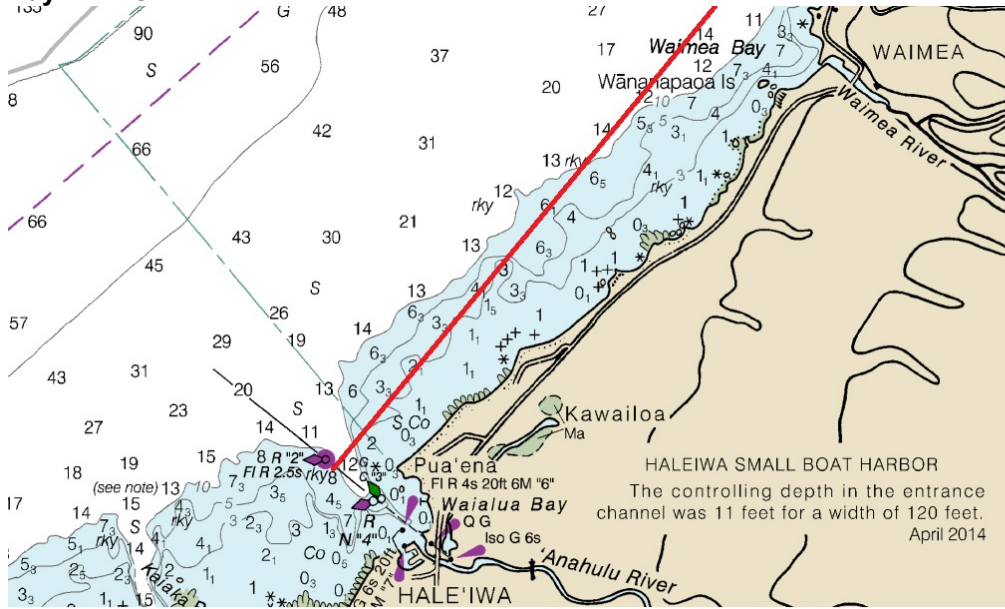
**MOORING:** It is each entrant's responsibility to secure mooring for the second day. Mooring applications can be filed at any of the state harbors. Required documents include but are not limited to: vessel registration, vessel proof of insurance and photo identification.

## Day 2 - Course

"K" Buoy is not a course mark



## Day 2 Finish



## APPENDIX C

May 29, 2023

Day 3

**Racing Area:** The racing area will be off the leeward shore of Oahu.

**The Course:** The course will be Start - BP buoys 1 & 2 to port – Pearl Harbor buoys 1 & 2 to port – HH to port – Finish at Ala Wai Channel entrance. Approx. 19 NM

**Areas That Are Obstructions:** Note the Prohibited area which must be passed to port.

**Signals:** Class Flags as described below will be displayed for each class's warning signal.

PH A & B	Black with #1
Multihulls	Blue with M
Cruising	Light Green with C

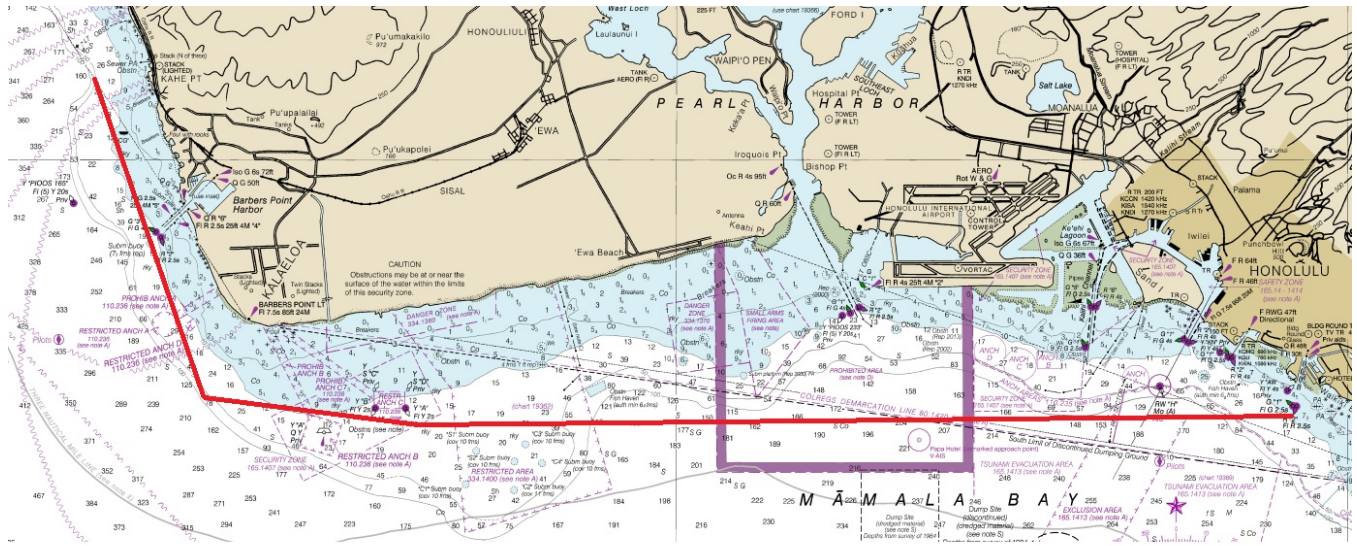
**The Start:** The Starting Line will be between a yellow inflatable buoy and the staff of an orange flag on the Race Committee Boat. It will be located to seaward of Kahe Power Plant. A boat shall not start later than 10 minutes after her starting signal.

<u>Class</u>	<u>Warning</u>	<u>Start</u>
PH A, B & X	1055	1100
Multihulls & Cruising	1105	1110

**The finish:** The finish is at Ala Wai channel entrance. The finish line is between Ala Wai Channel entrance buoys G1 and R2 with R2 to starboard. If Race Committee Boat is on station in the Ala Wai Channel, boats may communicate on **VHF Channel 68** to verify their finish times. If Race Committee Boat is not on station boats shall finish and report their finish times (name of boat, HST time of day of finish in HH:MM:SS) to the Race Committee via text to Gary Evoniuk at (919) 599-3111 within one hour of finishing.

**Prizes:** Prizes will be awarded at approximately 1600 at WYC.

# Day 3 Course



## Day 3 - Prohibited Area

