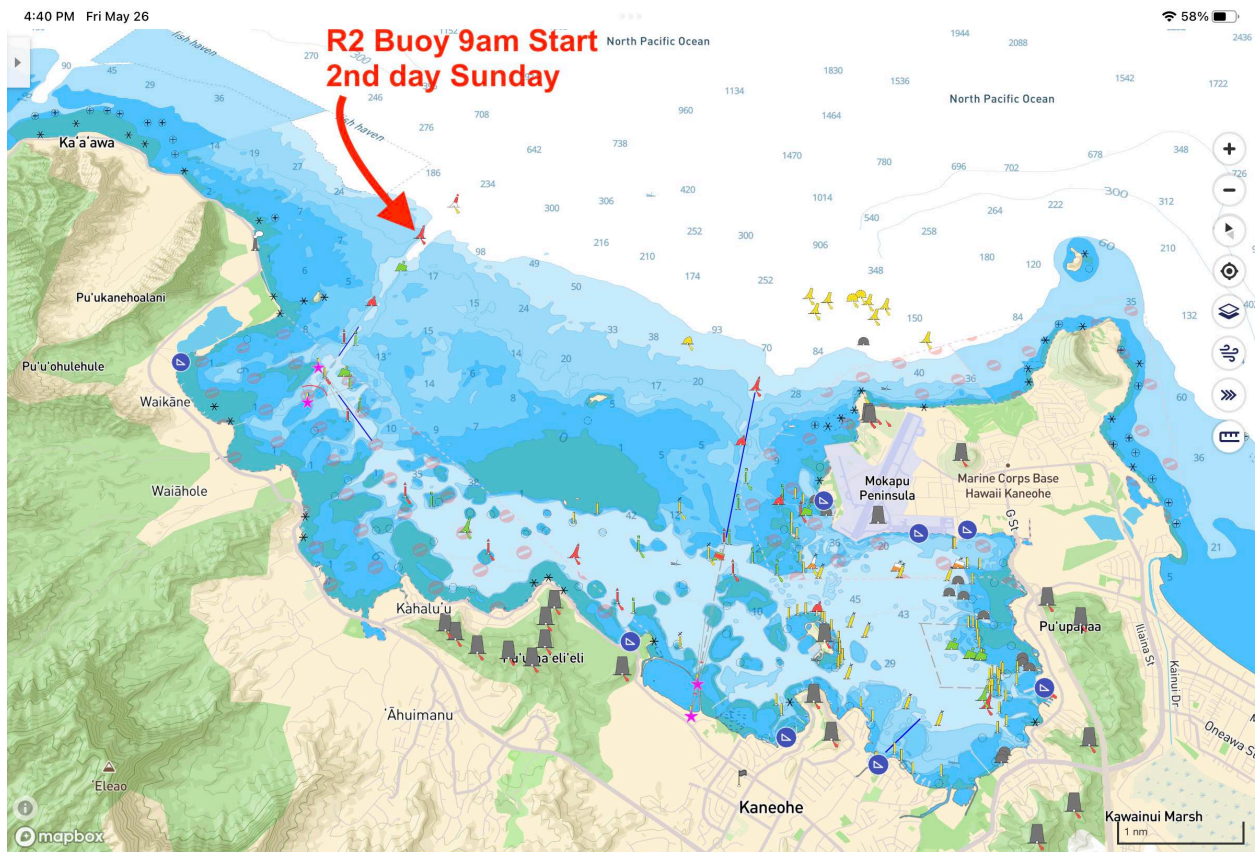


## APPENDIX B May 28, 2023 Day 2

### AMMENDED START

**Racing Area:** The racing area will be off the windward and north shores of Oahu.

**The Course:** The course will be: Start – Between KBay ship channel R2 and orange flag on RC boat



Channel - Finish at entrance to Haleiwa Harbor – Approx. 33 NM.

**Marks:** Mark X will be multi-ring inflatable with blue pontoons or yellow buoy set approximately 1/2 mile windward of the start line. Pin end of start will be multi-ring inflatable with blue pontoons or yellow buoy. Routine movement of autonomous marks will not be grounds for redress. This includes minor readjustments, marks returning to station after having been pushed away by a

competitor, and collisions with marks that are not actively marks of the course presuming these collisions do not cause damage. This changes RRS and NOR.

**Signals:** Class Flags as described below will be displayed for each class's Warning Signal.

PH A & B Multihulls Cruising

Green or Black with #1 Blue or Blue with M Light Green with C

**The Start:** The starting line will be between the KBay ship channel R2 buoy and orange flag on the Race Committee Boat. A boat shall not start later than 10 minutes after her starting signal.

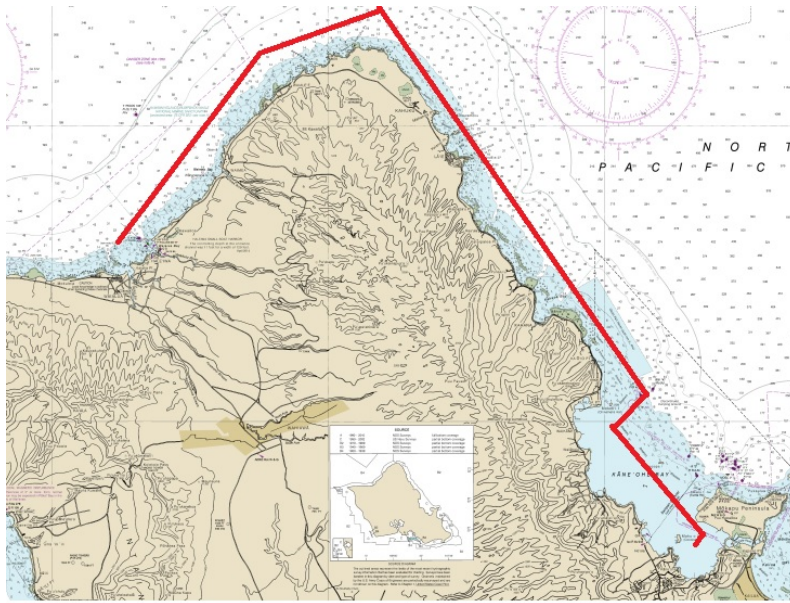
Class Warning Start PH A, B 0855 0900 Multihulls & Cruising  
0905 0910

**The Finish:** The finish is at the entrance to Haleiwa Harbor. The finish line is inside Haleiwa Harbor buoy R2 with R2 to starboard and at a bearing to land of 135 degrees magnetic. If Race Committee Boat is on station, boats may communicate on **VHF Channel 68** to verify their finish times. If Race Committee Boat is not on station boats shall finish and report their finish times (name of boat, HST time of day of finish in HH:MM:SS) to the Race Committee via text to Gary Evoniuk at (919) 599-3111 within one hour of finishing.

---

**MOORING:** It is each entrant's responsibility to secure mooring for the second day. Mooring applications can be filed at any of the state harbors. Required documents include but are not limited to: vessel registration, vessel proof of insurance and photo identification.

**Day 2 - Course**



## Day 2 Finish

“K” Buoy is not a course mark

