



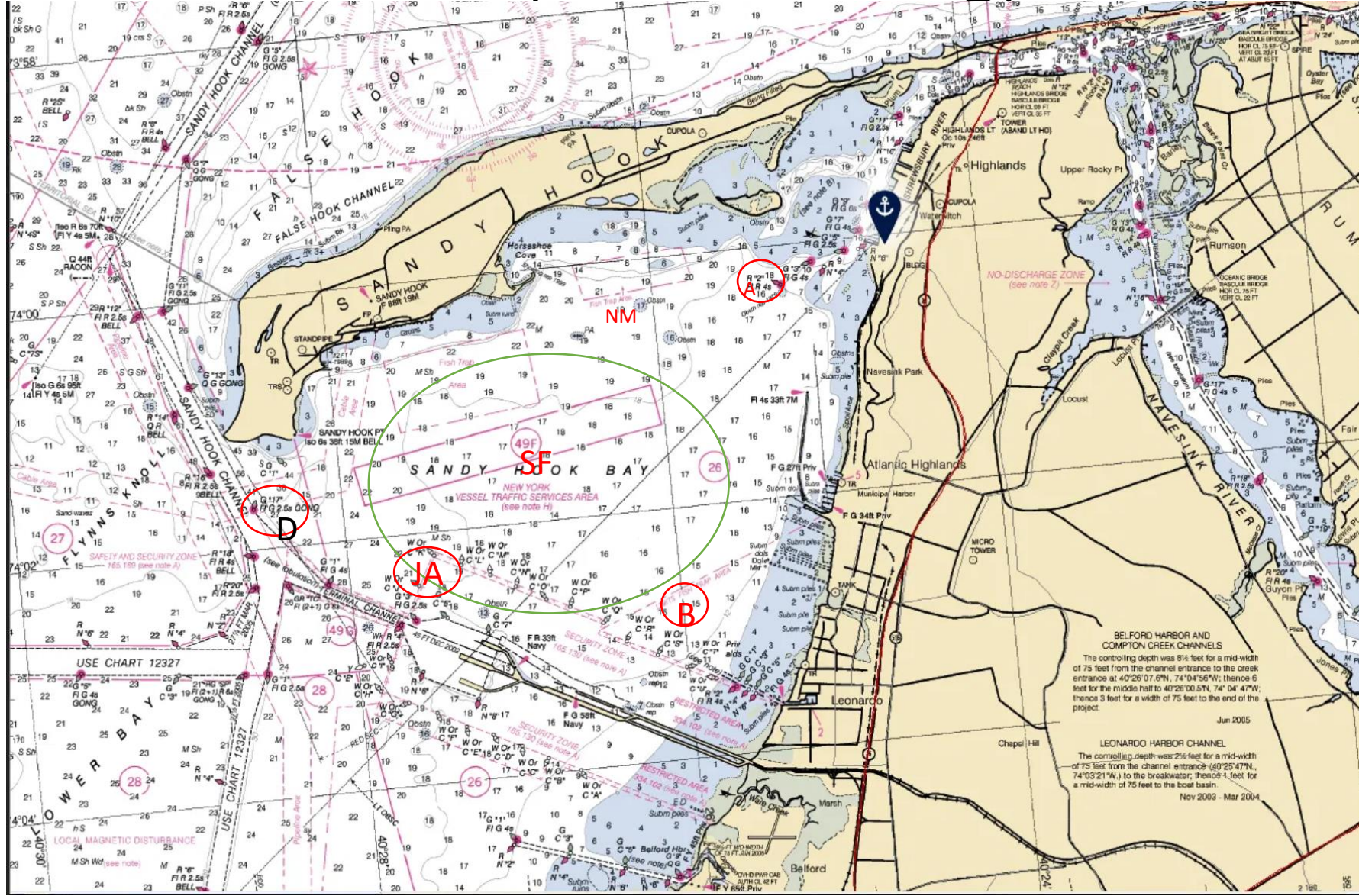
August 19, 2023

Race Courses Marks

Race Course Area (see Lat/Long)

Notes:

- Approx location of marks
- Use lat/long provided
- Olympic circle are yellow cylinder marks with alternating red and green tops
- SF in center of circle
- Honor all white govt buoys by pier

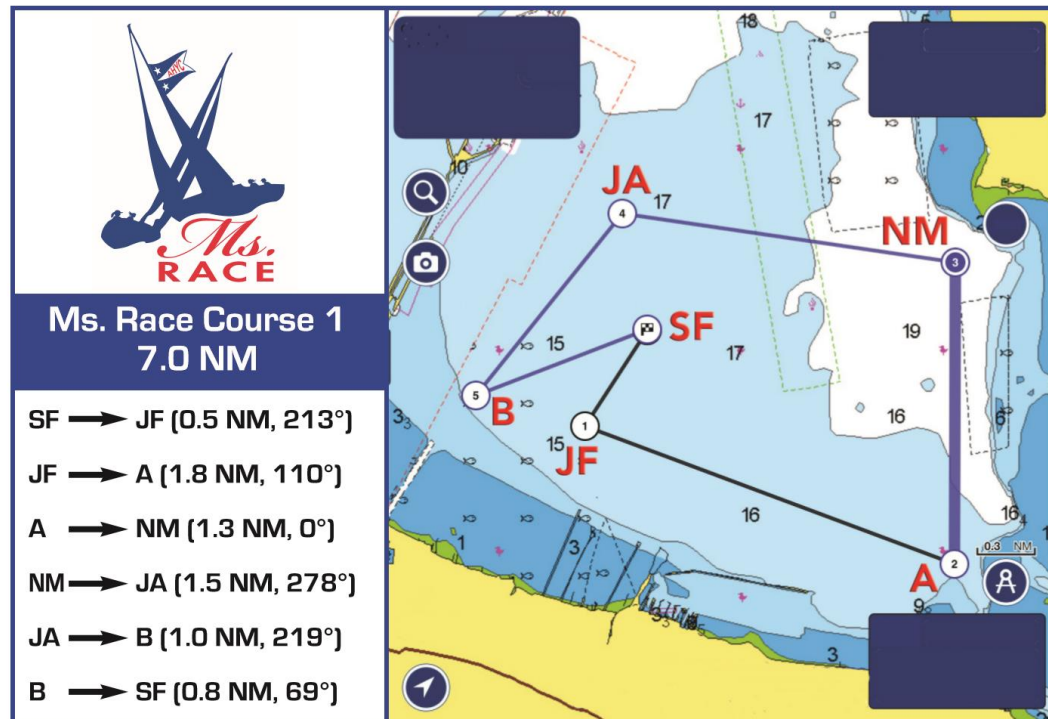


Racing Mark Locations

NOTE: Differences between listed and actual latitude and longitude shall not be grounds for redress.

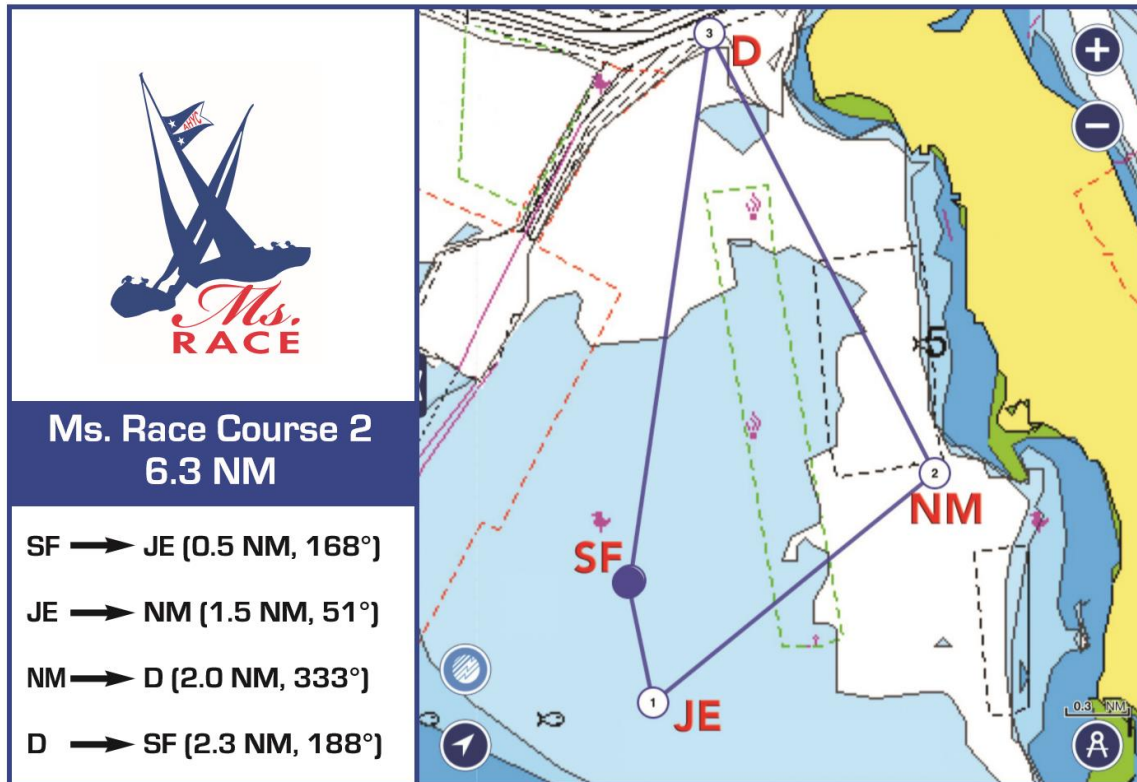
MARK		DESCRIPTION	LA	LONG
A	R "2"	Highlands Channel	4025.17	7400.35
B	AHYC MK	Leonardo— <i>New Location 2012</i>	4026.00	7403.10
BW	AHYC MK	AH Breakwater	4025.31	7401.34
C	FLG "1"	Sandy Hook Channel	4028.10	7402.37
D	FLG "17"	Sandy Hook Channel	4028.52	7401.69
JA	AHYC MK	Olympic Circle	4026.78	7402.25
JB	AHYC MK	Olympic Circle	4026.70	7401.75
JC	AHYC MK	Olympic Circle	4026.38	7401.47
JD	AHYC MK	Olympic Circle	4026.00	7401.56
JE	AHYC MK	Olympic Circle	4025.79	7401.98
JF	AHYC MK	Olympic Circle	4025.86	7402.47
JG	AHYC MK	Olympic Circle	4026.18	7402.76
JH	AHYC MK	Olympic Circle	4026.56	7402.66
AHBW		Atlantic Highlands Breakwater	4025.10	7401.22
AHYC		Floating Dock	4025.05	7402.01
FLG "11"		Required Mark Sandy Hook Channel	4028.86	7400.08
FLG "13"		Required Mark Sandy Hook Channel	4028.83	7400.69
NM		AHYC MK Horseshoe Cove	4026.632	7400.487
SF	AHYC MK	Olympic Circle	4026.29	7402.11
T	RN "2"	Chapel Hill Channel	4028.75	7402.68
AMB		Ambrose Light	4027.467	7350.14
WB		West Bank Lighthouse	4032.28	7402.56

Race Course 1 – 7.0 nautical miles



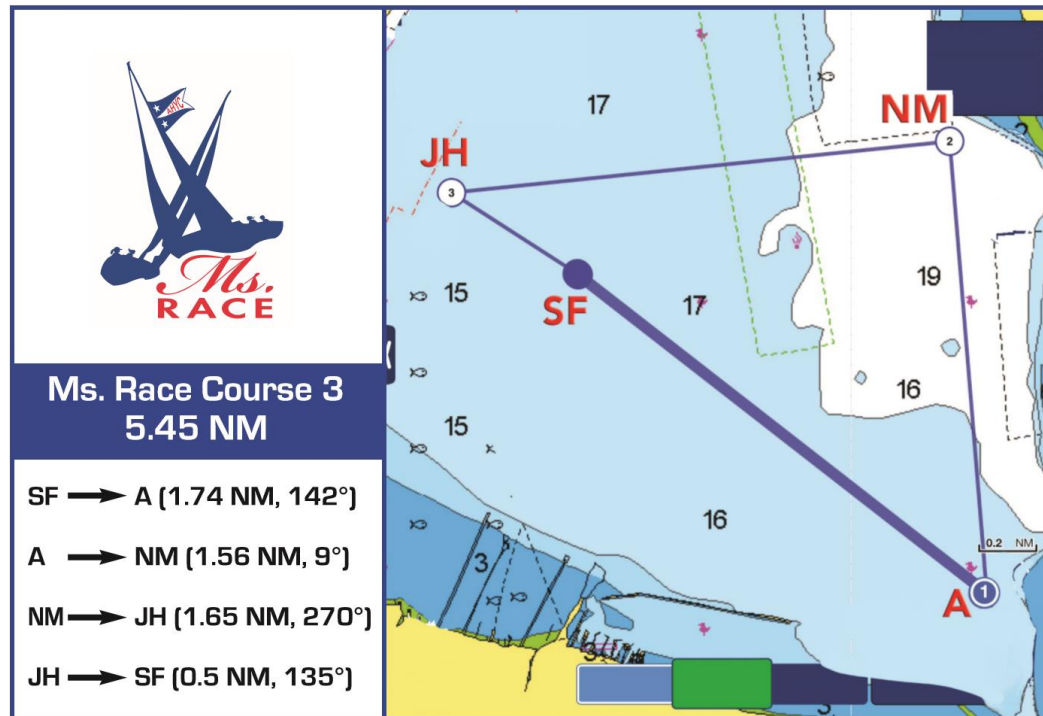
- The SF pin will be positioned to port of the committee boat
- The first mark in Race Course 1 is the JF mark at 213^o
- Headings are listed for subsequent marks
- All marks are to be left to PORT.
- The wind direction may not be windward of the start line

Race Course 2 – 6.3 nautical miles



- The SF pin will be positioned to port of the committee boat
- The first mark in RC 2 is the JE mark at 168°
- Headings are listed for subsequent marks
- All marks are to be left to PORT.
- The wind direction may not be windward of the start line

Race Course 3 – 5.45 nautical miles



- The SF pin will be positioned to port of the committee boat
- The first mark in RC 3 is the A mark at 142°
- Headings are listed for subsequent marks
- All marks are to be left to PORT.
- The wind direction may not be windward of the start line