

Vineyard Haven Yacht Club

Jewett Bowl

(Pursuit Format Race)

SAILING INSTRUCTIONS

1. **RULES:**

The Jewett Bowl (the "Race") shall be governed by: The Racing Rules of Sailing

2. **NOTICES TO COMPETITORS:**

All notices to competitors will be posted on the Official Notice Board located on the deck at Vineyard Haven Yacht Club ("VHYC").

3. **CHANGES IN SAILING INSTRUCTIONS:**

Any changes to these Sailing Instructions will be posted on the Official Notice Board not less than two hours prior to the first warning signal on the day of the race.

4. **SIGNALS MADE ASHORE:**

Signals made ashore will be displayed from the VHYC flagpole. If a postponement is signaled ashore, the warning signal will be made not less than one hour after the AP is lowered.

5. **RACING AREA:**

The racing area will be in Vineyard Sound, Buzzards Bay and Nantucket Sound.

6. **Weather**

- a. The Race Committee may cancel the race if the Winds are 20+ knots sustained

7. **MARKS:**

All marks shall be government marks.

8. **THE START:**

- a. The Race will be started using the Rule 26 format with the warning signal given five minutes before the starting signal for the first boat to start and the preparatory signal given four minutes before the first boat to start the Race. Each boat thereafter shall start the Pursuit Format Race at its designated time using GPS time. No further signals or flags shall be given after the first boat to start. As a courtesy, the Race Committee will make an effort to announce the start for each boat on VHF Channel 72, after the first boat to start, however, the GPS time for each boat shall control.
- b. The VHYC Burgee shall be the Class Flag.
- c. **The starting line shall be between an orange flag on the Race Committee Boat and N6**
- d. The starting times for each boat will be posted on the Official Notice Board by 1000 hrs on Saturday, August 10th.

9. **THE FINISH:**

The finishing line shall be between an orange flag on the Race Committee Boat and N6.

10. **TIME LIMIT:**

Each boat must complete the course by 1730 hrs or will be scored DNF without a hearing. This changes Rule 35.

11. **PROTESTS:**

- a. A boat intending to lodge a protest shall comply with all provisions of Rule 61 and shall notify the Race Committee immediately upon finishing of that intent, providing to the Race Committee the name and sail number (if shown on the sail) of the boat being protested.
- b. Protests shall be filed in writing with the Protest Committee on forms available from the VHYC office within one hour of the last boat to finish for the day, such time to be posted on the Official Notice Board.
- c. The Jury will hear each protest in the order posted, beginning as soon as possible after the completion of the race.

12. PENALTY SYSTEM:

Rule 44.3(c) will apply. The scoring penalty will be 20% of the number of boats that start the race.

13. SCORING:

Due to the Pursuit Race Format, the order in which each boat finishes shall determine its score.

14. SAFETY:

- a. Every yacht shall check in with the Race Committee at the starting area by passing astern of the Race Committee Boat stating the boat's name and sail number. The Race Committee will acknowledge by responding with the boat's name. Check-ins will not be accepted via VHF.
- b. Any yacht withdrawing from a race SHALL report her withdrawal to the Race Committee on VHF Channel 72 as soon as practicable after her decision to abandon the race.

15. DISCLAIMER OF LIABILITY:

- a. Each owner, skipper and individual participating crewmember ("Person") agrees to be bound by the Rules. Furthermore, each Person agrees that the sole responsibility for the seaworthiness of the boat, her rigging, the safety equipment on board, the wearing of PFD's and the competence and behavior of her crew is that of the Owner/Charterer/Skipper of the boat.
- b. Each Person participates in the race entirely at their own risk and represents that he/she is acquainted with RRS Rule 4 which states, "The responsibility for a boat's decision to participate in the Race or to continue racing is hers alone." VHYC will not accept any liability for any damage or personal injury or death sustained in conjunction with or prior to, during, or after the Race.

16. COURSES:

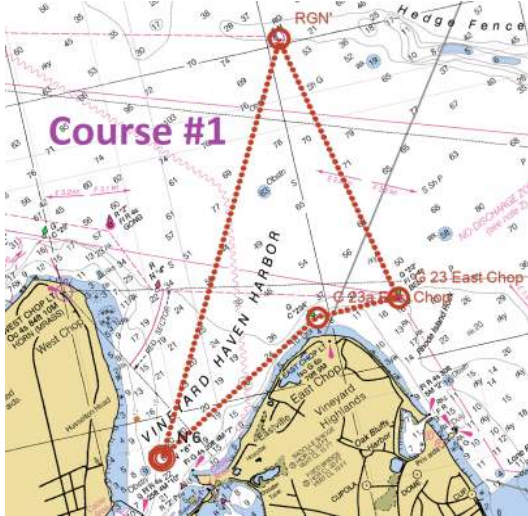
- a. The Race Committee will publish potential start times for 2-3 potential courses chosen at the skippers meeting by 2000 hrs on Friday, August 4th. The potential start times will be posted on the Official Notice Board and will be emailed to competitors that provide an email address.
- b. The final decision on the course, and the applicable start time for each boat will be published by 1000 hours on Saturday, August 5th on the Official Notice Board.
- c. The course will be designated by the appropriate number displayed on the Committee Boat.
- d. If a course designation is followed by "R", the course is to be sailed in the opposite order as described above and marks are to be left on the opposite side.

e. All boats shall honor the N "4" -- C "23A" Gate at the entrance to Vineyard Haven Harbor regardless of selected course.

COURSE #1 THE DASH

(approximately 6 nm)

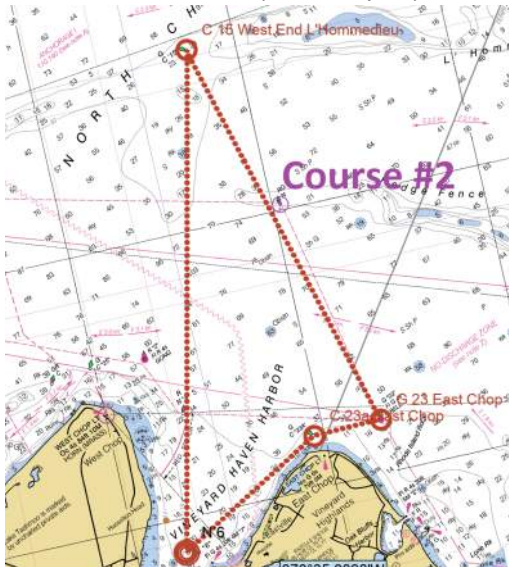
Start at N6, to G "23" (leave to port), to RG N (Hedge Fence West)(leave to port), to Finish at N6



COURSE #2 THE DASH PLUS

(approximately 8.3 nm)

Start at N6, to G "23" (leave to port), G "15" (leave to port) to Finish at N6.



COURSE #3 END OF SQUASH

(approximately 8.9 nm)

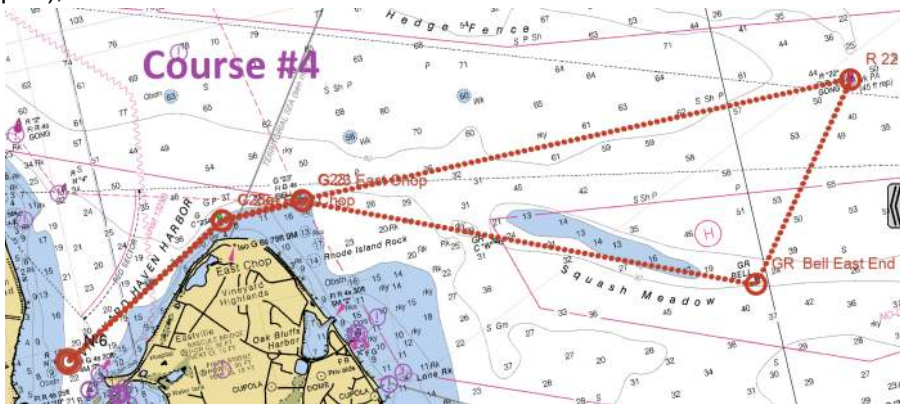
Start at N6, to G "23" (leave to Starboard) to GR Bell at the East end of Squash Meadow to Port to G "23" (leave to port), to Finish at N6.



COURSE #4 HEDGE AND SQUASH

(approximately 10.9 nm)

Start at N6, G "23" (leave to starboard) to R "22" (leave to starboard) to GR Bell (leave to starboard) to G "23" (leave to port), to Finish at N6.



COURSE #5 HEDGE FENCE-EDGARTOWN COURSE

(approximately 12.1 nm)

Start at N6, G "23" (leave to starboard) to R "22" (leave to starboard) to R "2" Bell off of Edgartown (leave to starboard) to G "23" (leave to port), to Finish at N6.



COURSE #6 MIDDLE GROUND

(approximately 12.0 nm)

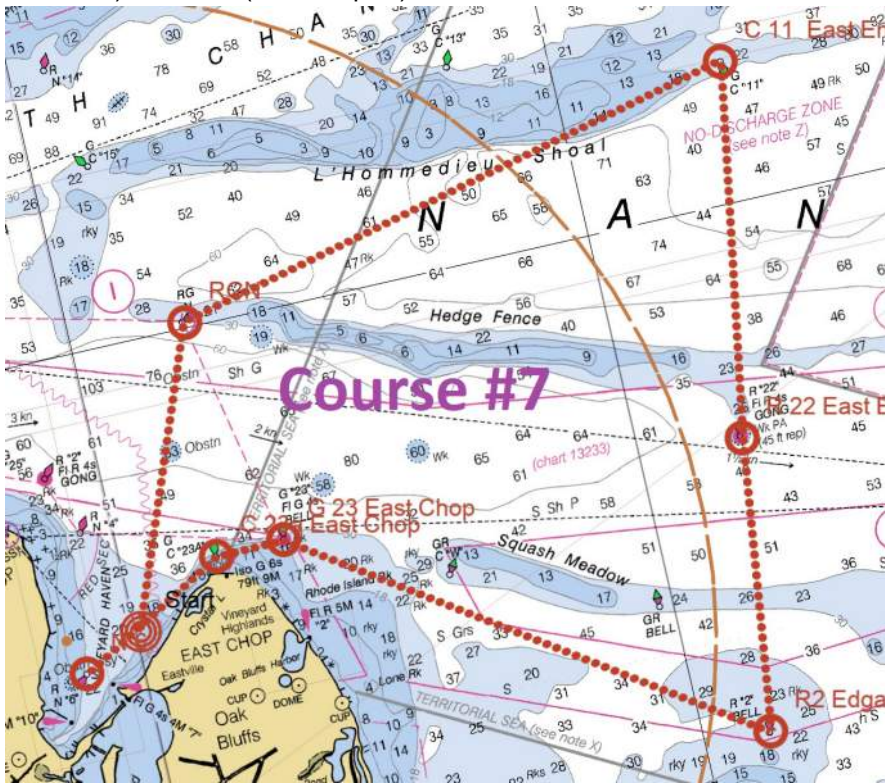
Start at N6, leave C "25" to port, to G "27" (leave to starboard), to R "26" (leave to starboard), to C "25" (leave to starboard), to Finish at N6.



COURSE #7 AROUND HEDGE FENCE COURSE

(approximately 16.5 nm)

Start at N6, to RG N (leave to starboard) to C "11" (leave to starboard) to R "22" (leave to starboard) to R "2" (leave to starboard) to G "23" (leave to port), to Finish at N6.



Large format Courses

