



# Cambridge Yacht Club

Welcomes you to the 84th Anniversary of the Governor Hicks Trophy Weekend for Log Canoes  
August 19 - 20, 2023

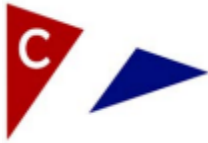
## Sailing Instructions

- 1. Eligibility:** Only Chesapeake Bay Sailing Log Canoes.
  - 2. Entries:** All contestants must register with the Cambridge Yacht Club (CYC) Race Committee prior to the race weekend. To do so, contestants must register for the regatta online at [www.regattanetwork.com/event/26861](http://www.regattanetwork.com/event/26861) prior to 0800 Saturday August 19. A Skipper's Meeting is scheduled to begin at 0830 on Saturday at the CYC Gazebo. There is a \$40.00 entrance fee.
  - 3. Racing Rules:** The regatta will be governed by The Racing Rules of Sailing except as modified by these Sailing Instructions, the CBLCSA, the Notice of Race or by the acting Principal Race Officer. Changes that are not otherwise outlined in the NOR or SI's will be announced at the skipper's meeting and posted in writing on the official notice board.
- As used in the RRS, the word "hull" is replaced by "hull and equipment in normal position," and includes boomkin, boards, bowsprit and jib club in sailing position as length of hull.
- 4. Committee Boat:** To be announced at skippers meeting. The Committee boat will monitor VHF Channel 72 as well as 16.
  - 5. Course:** Competitors will be provided with a list of predetermined racecourses (attached herewith). All races will be started into the wind at a predetermined mark outlined in the racecourse list.

All course marks are located in no less than 6' MLW, and all race marks with the exception of 'B', 'G', 'F', and 'Z' are government marks. Non-government ESSA racing marks may have an Orange buoy placed nearby to aid competitors with visibility by the Race Committee, and if this is the case, competitors shall round the Orange buoy only.

A course number will be displayed on the Committee boat prior to the Warning Signal, as well as communicated on VHF. (Course sheet attached and is also available at registration or can be found at the CYC web site [www.cambridgeyachtclub.com](http://www.cambridgeyachtclub.com)).

To provide competitors with the best windward leg possible, the Race Committee may replace the first windward mark in the race list with a large yellow drop mark. If utilized, this will be clearly announced and displayed on the Committee Boat prior to the warning signal. When a windward drop mark is used, after rounding, the competitor will continue sailing to the next race mark as outlined in the course list.



EXAMPLES:

- 1) Displayed on Committee Boat white board: “**21**”
  - a. The competitor will start between ‘H’ and the orange flag on the Committee Boat.
  - b. They will then sail to E (port), C (starboard), A (starboard) and then finish between Z and the bulkhead. Keep Z to starboard.
- 2) Displayed on Committee Boat white board: “**21 MOD (.75nm / 290)** “ (*Drop Mark used*)
  - a. The competitor will start between ‘H’ and the orange flag on the Committee Boat.
  - b. The competitor will then sail .75 nautical miles to a Drop Mark bearing 290. After rounding the Drop Mark to port they will continue to sail to C (starboard), A (starboard) and then finish between Z and the bulkhead. Keep Z to starboard.

Courses may be shortened by the race committee at any mark, without notice at the previous mark.

**6. Schedule of Races:**

Race Date	Warning	Start Signal
#1 Sat, Aug 19	0950	1000
#2 Sat, Aug 19	1350	1400
#3 Sun, Aug 20	0950	1000

**7. Start:** All signals will be made from the Committee boat, none being made ashore. Signals will be at 5-minute intervals. Times shall be taken from the visual signals; failure of a sound signal shall be disregarded. Signals will be as follows:

WARNING	10 minutes	Yellow Flag...sound
PREP	5 minutes	Blue Flag...sound
START	0 minutes	Red Flag...sound

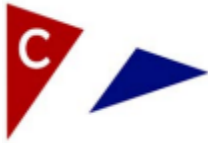
The starting line will be between the orange flag on the Committee boat and either a government mark or a round orange club mark. Distance and bearing to the windward mark is listed as an appendix to the race course list attached herewith. There may be a barging buoy set aft of the Committee Boat. Do not enter this area. No race will start in less than 3 knots of wind.

**8. Recalls:** Individual recalls will be signaled by a Code “X” flag and one blast of the horn. The committee will attempt to hail the sail number(s) of premature starters. Whether or not hail is heard, responsibility for starting properly rests with the skipper and will not be grounds for redress. This amends RRS 62.1(a).

**9. General Recall:** Will be signaled by display of Code Flag “First Substitute” and two guns. Warning signal will replace the signal one minute after it is lowered (one sound of horn will accompany the lowering of the signal).

**10. Penalties:** RRS 44 is changed to “one turn” wherever the phrase “two turns” occurs.

**11. Finish:** When able and appropriate, the finish line will be between the ‘Z’ mark and a yellow



flag on the CYC bulkhead. In the event the race is shortened, or conditions prohibit a finish at 'Z', the finish will be between the orange flag on the committee boat and a chosen course mark.

**12. Time Limit:** The first boat must cross the finish line within two (2) hours when two races are scheduled, and (3) hours when one race is scheduled. The Race Committee may call the race sooner at its discretion. Any boat that finishes 45 minutes or more after the first boat has finished shall be scored as DNF. A minimum of ONE hour shall be allowed between the time of the last place finisher and the warning signal for a succeeding race, unless there have been back-to-back races agreed upon beforehand.

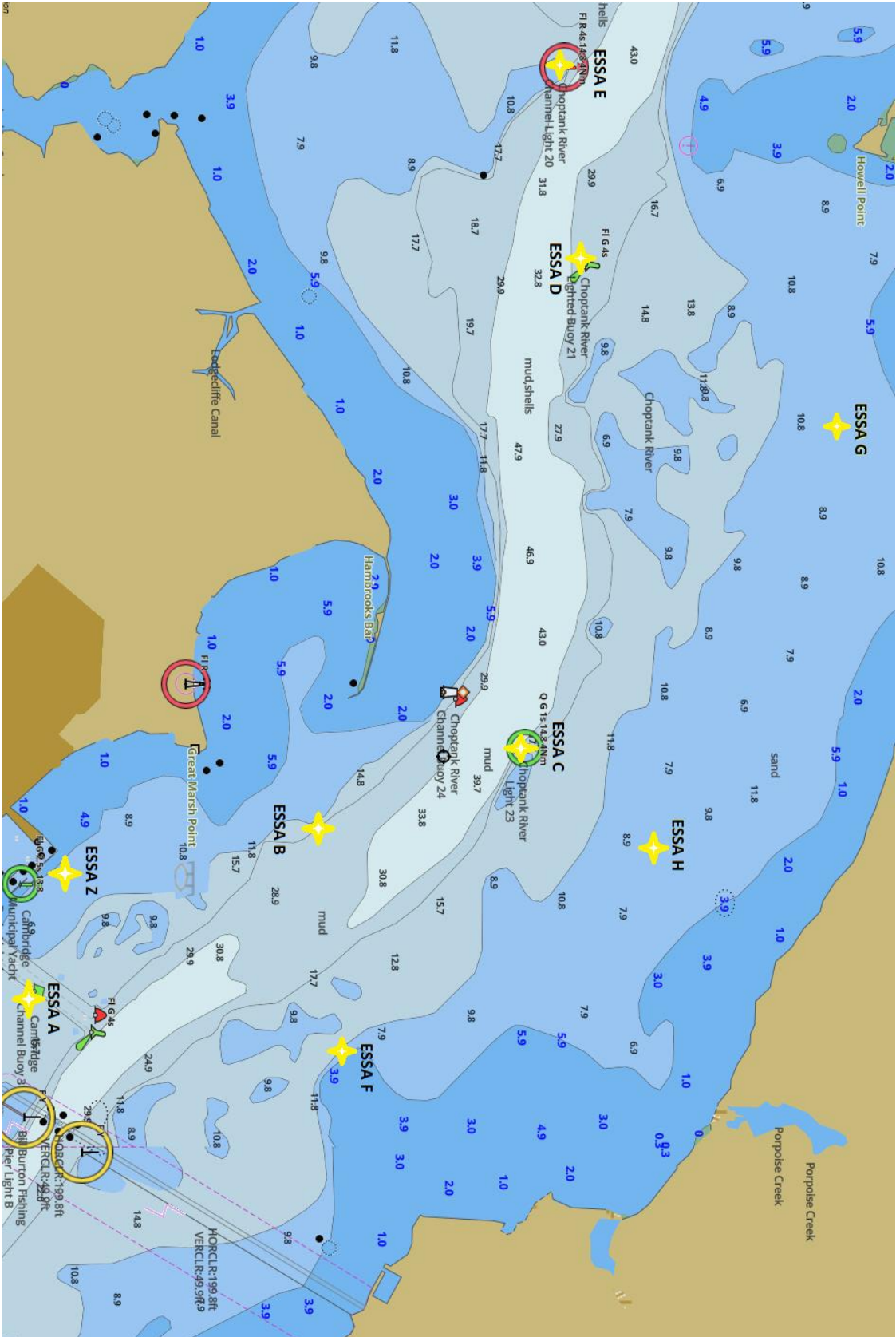
**13. Protests:** The race committee must be informed of intent to protest as the boat finishes the race by flying a red flag before and after announcement to the Committee boat. Protest shall be written and lodged with the race committee within one hour after the last boat's finish in the last race of the day. All protests shall be made in writing in a clear and comprehensive manner setting forth all details and names of witnesses. CBYRA protest forms can be found in the back of the Greenbook. All involved parties shall report to the designated protest area and remain readily available.

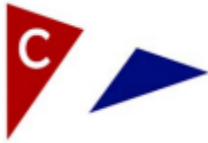
**14. Safety:** All canoes shall have a chase boat/tender with life jackets for each crew member. All canoes must have a life ring or throwable cushion with a rope attached. Any crew member who cannot swim must wear a life jacket. It is the sole responsibility of the owner and/or skipper that these requirements are met. Should a canoe capsize, the chase boat/tender crew must respond to the canoe, ascertain the condition of all crew members and immediately report the same to the Committee Boat via VHF 72. A Defibrillator will be available on a CYC safety boat.

**15. Scoring:** The low point scoring system described in RRS Appendix A, will apply. If a boat does not compete in a race, she will be scored as DNC.

**16. Trophies:** The Trophy Awards Ceremony is scheduled for approximately 1400 on Sunday, Aug 20th. Individual trophies will be presented to the first, second and third place canoes for the weekend. The first-place canoe will have its name, etc., engraved on the 1938 Governor Hicks perpetual Trophy.

**18. Disclaimer of Liability:** Competitors participate in the races at their own risk. See RRS 4, Decision to Race. The organizing authority will not accept any liability for material damage or personal injury or death sustained in conjunction with or prior to, during, or after the races.





ESSA Race Markers: Distances and Bearings-2023										
From/To >	Deg Mag/NM		Updated April 14, 2023							
V										
	A	B	C-2021	D-2021	E	F	G	H	Z	
A		338/.91	344/1.40	321/2.1	311/2.7	31/0.8	341/2.3	358/1.37	282/0.4	A
B	158/.91		356/.51	309/1.28	299/1.95	108/0.7	340/1.4	20/.73	184/.80	B
C	164/1.4	178/.51		287/1.01	285/1.73	132/1.00	321/1.06	58/.35	176/1.23	C
D	141/2.1	129/1.28	107/1.01		281/.7	120/2.0	47/0.8	89/1.26		D
E	131/2.7	119/1.95	105/1.73	101/.7		115/2.7	73/1.3	97/2.0		E
F	211/0.8	288/0.7	312/1.00	300/2.0	295/2.7		323/1.9	323/1.9		F
G	161/2.3	160/1.4	141/1.06	227/0.8	253/2.3	143/1.9		134/0.9		G
H	178/1.37	200/.73	235/.35	275/1.26	277/2.0	153/1.0	314/0.9			H
Z	102/0.4	04/.80	356/1.23							Z
	A	B	C-2021	D-2021	E	F	G	H	Z	



ESSA Choptank Courses 2023 Season					V 23.1	
If Twice Around, drop "Z" . "Z" is only for the finish line.						
Course Number	Wind Direction	DegM	Start	Course Marks	Leave to	NM
1	N	358	A	H-A-Z	P,S,S	3.1
2	N	358	A	H-C-A-Z	P,P,S,S	3.5
3	N	358	A	H-D-C-A-Z	P,P,S,S,S	4.6
4	N	358	A	H-G-C-A-Z	P,P,S,S,S	5.1
5	NE	31	A	F-A-Z	P,S,S	2.0
6	NE	31	A	F-C-A-Z	P,P,S,S	3.6
7	NE	31	A	F-C-H-A-Z	P,S,S,S,S	3.9
8	NE	58	C	H-A-Z	S,S,S	3.5
9	NE	58	C	H-G-A-Z	P,P,S,S	4.0
10	E	108	B	F-A-Z	S,S,S	1.9
11	E	108	B	F-C-A-Z	P,P,S,S	3.5
12	SE	164	C	A-H-A-Z	P,P,S,S	4.5
13	SE	164	C	A-C-A-Z	P,P,S,S	4.6
14	S	178	H	A-Z	S,S	1.8
15	S	178	H	A-H-A-Z	P,P,S,S	4.5
16	S	178	H	A-H-G-A-Z	P,P,P,S,S	6.3
17	SW	200	H	B-A-Z	P,S,S	2.1
18	SW	200	H	B-H-A-Z	P,S,S,S	3.2
19	SW	235	H	C-H-D-C-A-Z	P,P,P,S,S,S	4.8
20	W	275	H	D-C-A-Z	P,S,S,S	4.1
21	W	277	H	E-C-A-Z	P,S,S,S	5.5
22	NW	341	A	G-A-Z	S,S,S	5.0
23	NW	344	A	C-A-Z	S,S,S,S	3.2
24	NW	344	A	C-H-C-A-Z	S,S,P,S,S	3.9