



61st ANNUAL - OPEN ORANGE BOWL REGATTA

Coconut Grove Sailing Club - Miami, FL

December 27-30, 2023

SAILING INSTRUCTIONS

FOR ALL CLASSES EXCEPT WASZP

1. RULES

- 1.1 The 2023 CGSC Open Orange Bowl Regatta will be governed by the “The Rules” as defined in the current Racing Rules of Sailing (RRS).
- 1.2 RRS 40.1 (Personal Flotation Devices) applies at all times while afloat.
- 1.3 The special procedures of Appendix P5 will apply in accordance with the class rules of 29ers, I420s, and Finns.
- 1.4 [DP] All boats shall check in with the RC Signal Vessel prior to the Warning Signal of the first race each day by sailing past the stern of the Signal Vessel on starboard tack and hailing her sail number until acknowledged by the Race Committee.
- 1.5 Refer to NoR for other rules that are changed and requirements for each class.

2. COMMUNICATION WITH COMPETITORS

- 2.1 Notices to competitors will be posted on the Official Notice Board (ONB) at Regatta Network and by email to all competing boats affected by this notice. The URL for the ONB is https://www.regattanetwork.com/event/26984#_newsroom. Failure of a boat to receive or read any such emails and notices will not be grounds for redress. *This changes RRS 62.1(a)*.
- 2.2 See SI 5.1 for a schedule of competitor briefings.
- 2.3 Race Results will be on Regatta Network, at the URL link above.

3. CHANGES TO SAILING INSTRUCTIONS

- 3.1 Written changes will be posted by 1000 on Wednesday, December 27th, and thereafter by 0830 on the day they will take effect. However, any changes in the Schedule of Races will be posted by 1000 on Wednesday, December 27, or by 1900 or the protest time limit (whichever is later) on the day before they take effect.
- 3.2 Changes to the Sailing Instructions may be made on the water in accordance with RRS 90.2(c). The RC Signal Vessel shall display Code Flag “L” (with one sound) and Competitors shall approach the Signal Vessel and orally receive the change or read the change on a board posted on the Signal Vessel.

4. SIGNALS MADE ASHORE

- 4.1 Signals made ashore will be displayed from the CGSC flagpole and posted to the ONB.
- 4.2 When Code Flag “L” is displayed ashore, a notice to competitors has been posted on the Official Notice Board, and notification will be sent to competing boats by email.
- 4.3 When Code Flag “AP” is displayed ashore, “1 minute” is replaced with “not less than 60 minutes” in the race signal AP. *This changes RRS Race Signals AP.*

5. SCHEDULE

- 5.1 The racing schedule for the regatta will be as follows (see the NoR for shore-side events):

Wednesday, Dec. 27	
I420 Competitors’ briefing at Regatta Park	0900
Alpha Course 1 st warning signal: I420s	1100
Thursday, Dec.28	
29er and Nacra 15 Competitors’ briefing at Regatta Park	0900
Alpha Course 1 st warning signal: I420s followed by 29ers	1100
Bravo Course 1 st warning signal: Nacra 15s	1300
Friday, Dec. 29	
Snipe Competitors’ briefing at Regatta Park	0900
Finn Competitors’ briefing at CGSC	0930
Alpha Course 1 st warning signal: I420s. followed by 29ers, Snipes, and Finns	1100
Bravo Course 1 st warning signal: Nacra 15s	1300
Saturday, Dec. 30	
Alpha Course 1 st warning signal: I420s. followed by 29ers, Snipes, and Finns	1100
Bravo Course 1 st warning signal: Nacra 15s	1000
Alpha Course – No warning signal after this time	1300
Bravo Course – No warning signal after this time	1400
Awards Ceremony	ASAP After Racing

- 5.2 Eleven (11) races are scheduled for the I420 and 29er classes.
- 5.3 Eight (8) races are scheduled for the Nacra 15 class.
- 5.4 Five (5) races are scheduled for the Snipe and Finn classes.
- 5.5 The Race Committee Finishing Vessel will display Code Flag “A” without a sound signal, while boats are finishing indicating there will be no more racing that day. If Code Flag “A” is not displayed, boats should return to the starting area in anticipation of another race.

6. CLASS FLAGS

- 6.1 The class flags are as follows:
- I420 - Blue I420 logo on red and blue field
 - 29er - Red 29er logo on a green field
 - Nacra 15 - Blue Nacra 15 logo on a yellow field
 - Snipe - Snipe logo on a white field
 - Finn - Blue Finn logo on a white field

7. RACING AREA

- 7.1 The I420s, 29ers, Snipes, and Finns will race on the circle identified as “CGSC - OOB Alpha” on Addendum 2 – Race Areas. Alpha is located on Biscayne Bay in an area approximately 2.9 miles on a bearing of 171° from the John A. Brennan Channel Marker “1” (Fl. G 5 sec 8ft).

- 7.2 The Nacra 15s will race on the circle identified as “CGSC - OOB Bravo” on Addendum 2 – Race Areas. Bravo is located on Biscayne Bay in an area approximately 1.9 miles on a bearing of 185° from the John A. Brennan Channel Marker "1" (Fl. G 5 sec 8ft).
- 7.3 **Competitors are strongly advised to avoid the Middle Ground Shoal (white marker) identified on the chart in Addendum No. 2 - Race Areas.**
- 7.4 **[DP] Competitors and support vessels shall keep clear of other race areas when transiting to and from their racing area.**

8. COURSES

- 8.1 The diagrams in Addendum No. 1 show the courses, including the approximate angles between legs, the order in which marks are to be passed, and the side on which each mark is to be left.
- 8.2 No later than the warning signal, the race committee signal vessel may display the approximate compass bearing of the first leg.
- 8.3 **A shorter distance Mark 1 will be set for the Finn and Snipe classes only (see SI 9.2).**

9. MARKS

- 9.1 For the Alpha Course:
 - 9.1.1 Marks 1, 2, 3P/3S (the outer gate), and 4P/4S (the inner gate) will be orange inflatable marks.
 - 9.1.2 The shorter distance Mark 1 will be a yellow inflatable mark (see SI 8.3).
 - 9.1.3 Mark 1A (the offset mark) will be a 3 ft. (0.9m) mini-cylinder mark.
- 9.2 For the Bravo Course, marks 1, 1A and 4P/4S (the gate) will be orange MarkSetBots. MarkSetBots are robotically controlled marks. Routine movement of these marks on the course will not be grounds for redress. This includes marks returning to station after having been pushed away by a competitor, and collisions with marks that do not cause damage. *This changes RRS 60.1(b) and 62.1(a). RRS 31 still applies.*
- 9.3 If one gate mark is missing, the remaining gate mark shall be left to port.
- 9.4 Starting and Finishing Marks are as provided in SI 10.1 and 12.1, respectively.

10. THE START

- 10.1 The starting line will be between a staff displaying an orange flag on the RC Signal Vessel and a staff displaying an orange flag on a port end Line Vessel or the course side of a yellow inflatable mark.
- 10.2 A boat starting later than four (4) minutes after her starting signal will be scored Did Not Start (DNS) without a hearing. (*This changes RRS A5.1 and A5.2*).

11. CHANGE OF THE NEXT LEG OF THE COURSE

- 11.1 To change the next leg of the course, the Race Committee will move the original mark (or the finishing line) to a new position.
- 11.2 If Mark 1 is moved during a race, Mark 1A (the offset) will not be used for the remainder of that race.

12. THE FINISH

- 12.1 The finish line will be between a staff displaying a blue flag on the RC Finish or Signal Vessel and a staff displaying a blue flag on a nearby RC Mark Vessel, or the course side of a yellow inflatable mark.
- 12.2 The Alpha courses will have a finish line separate from the start line.

13. TIME LIMITS

13.1 The time limit and target time for each class (in minutes) are as follows:

Class:	First Mark	Race	Target Time
I420	30	90	45
29er	15	60	28
Nacra 15	15	60	28
Finn	20	80	40
Snipe	20	80	40

13.2 If no boat has passed the first mark within the Mark 1 Time Limit, the race shall be abandoned.

13.3 Boats failing to finish within the 15 minutes of the first boat in her class and not subsequently retiring, penalized, or given redress, will be scored Did Not Finish without a hearing. *This changes RRS 35, A5.1 & A5.2.*

13.4 Failure to meet the target time will not be grounds for redress. *This changes RRS 62.1(a).*

14. ALTERNATIVE PENALTIES

14.1 A boat that has taken penalty turns is encouraged to notify the Protest Committee by completing the online Penalty Acknowledgement form [here](#).

14.2 For the 29er and Nacra 15 classes, RRS 44.1 and Appendix V1 are changed so that the Two-Turns Penalty is replaced by the One-Turn penalty.

14.3 After a race, a boat that may have broken one or more rules of Part 2 or RRS 31 in an incident while racing may request to take a Post-Race Penalty for that incident. A boat takes the penalty by completing the online Penalty Acknowledgement form [here](#). The penalty shall be a 25% Scoring Penalty, calculated in accordance with RRS 44.3(c). However, RRS 44.1(a) and (b) apply, and the penalty shall not be taken after a protest hearing involving the incident has begun.

15. PROTEST AND REDRESS REQUESTS

15.1 Protests and requests for redress shall be emailed within the protest time limit, which is one (1) hour after the RC Signal Vessel docks for each course area.

15.2 Scoring inquiries, **including potential redress requests relating to a starting penalty**, should be initiated by filling out the online Scoring Inquiry form [here](#). Alternatively, a completed Scoring Inquiry form may be photographed and emailed to ScoringInquiry@cgsc.org. Also, questions about the status of scoring inquiries can be emailed to ScoringInquiry@cgsc.org. The RC will investigate, get back to you, and attempt to resolve the issue. If the scoring inquiry turns into a redress request, then the redress time limit will have been satisfied if the Scoring Inquiry form was submitted before the redress time limit expired and the request is made within 30 minutes after the inquiry has been answered.

15.3 Protests **and requests for redress unrelated to a starting penalty** should be initiated by filling out the online Protest form [here](#). Additionally, if a diagram is required, it should be photographed and emailed to Protest@cgsc.org. Alternatively, a completed Protest form may be photographed and emailed to Protest@cgsc.org. Also, questions about the status of protests and redress requests can be emailed to Protest@cgsc.org.

15.4 Parties to hearings, and their witnesses, should report to the protest desk by the time scheduled. The protest desk is at Coral Reef Yacht Club, on the second floor of the boat house (white building) at the bayside end.

15.5 It is a boat's sole responsibility to check the ONB at [Regatta Network](#) or its email promptly after the end of the protest filing time to see if she is cited in a protest.

- 15.6 The Race Committee will post to the ONB a list of penalties being assigned by the race committee and protests reported to the race committee prior to the end of the protest time limit. The deadline for requesting redress based on these scores will be either 30 minutes after posting of the penalty notice or the protest time limit, whichever is later. *This changes RRS 62.2.*
- 15.7 In a protest decision, the protest committee may impose suitable penalties, other than disqualifications, for violations of non-Part 2 rules, RRS 31 or for rules with no penalty specified in accordance with RRS 64.2.

16. SCORING

- 16.1 A minimum of three (3) races must be completed to constitute a series for the I420 29er, and Nacra 15 fleets. A minimum of one (1) race must be completed to constitute a series for the Snipe and Finn fleets.
- 16.2 For the I420, 29er, and Nacra 15 classes, in accordance with RRS A2.1, a boat's series score shall be the total of her race scores excluding her worst score after six (6) races have been completed. For the Snipe and Finn classes, in accordance with RRS A2.1, a boat's series score shall be the total of her race scores with no races excluded.

17. PRIZES

- 17.1 Trophies will be awarded to the top five finishers in any fleet with 15 or more entries, to the top three boats in any class with 10 to 14 entries, to the top two boats in any class with 5 to 9 entries, and to the top boat in other classes. In addition, for the I420, 29er and Nacra 15 classes, the top junior team (skipper and crew not yet age 17 on December 31, 2023) will receive prizes.

18. SAFETY REQUIREMENTS

- 18.1 A boat that retires from a race or does not intend to start a scheduled race shall promptly report this to the Race Committee via hailing and receive acknowledgement. If this is not possible, once back to shore, the skipper shall email CGSCrace@gmail.com.
- 18.2 Coach and support vessels are required by the Race Committee to monitor Race Committee VHF channel **73** for the I420, 29ers, Snipe, and Finns, and Race Committee VHF channel **69** for the Nacra 15s. In addition, they shall provide assistance to any competitor in danger, if notified to do so by the Race Committee.

19. COACH VESSEL & SUPPORT VESSEL (PARENT & SPECTATOR)

- 19.1 Coach Vessels shall register with CGSC during Registration, receive a flag, and sign a credit card authorization. Upon request, a mooring ball will be assigned for overnight use. The vessel will be charged \$80 USD if the flag is not returned at the end of the regatta. No coach vessel will be allowed on the course without a flag.
- 19.2 Except when rendering aid, team leaders, coaches and other support persons shall stay 100 meters away from all competitors and outside the trapezoid from the time of the preparatory signal for the first class to start until all boats have finished or retired or the race committee signals a postponement, general recall or abandonment.
- 19.3 Launching of coach vessels not already in the water will NOT be permitted at the Coconut Grove Sailing Club facilities. There is no dockage available for non-CGSC coach or support vessels. Non-CGSC coach vessels shall not dock at any time, except they may touch and go on the north and south dock (if the coach remains with the boat). Other non-CGSC support vessels shall not dock at any time. If a non-CGSC coach or support vessel is left unattended on any dock, then this violation of the rules may result in penalties up to and including expulsion of the vessel from the regatta.

- 19.4 A hearing may be called if a coach or support vessel fails to comply with the requirements of SI 19. The penalty for failing to comply with these requirements or the oral instructions of the Race Committee or Protest Committee will be at the discretion of the Protest Committee. **The penalty may be imposed on any or all boats associated with the support or coach vessel.**

20. RADIO COMMUNICATION

- 20.1 While racing, a boat shall neither make radio transmissions nor receive radio communication not available to all boats. This restriction also applies to mobile phones, cell phone calls and text messages.

21. VENUE AND TRASH DISPOSAL

- 21.1 All 420s, 29er and Nacra 15s, and Snipes will be launched, hauled and stored at Regatta Park. Finns will be launched, hauled and stored at CGSC.
- 21.2 Boats from Biscayne Bay Clubs other than CGSC may launch from and return to their own clubs. However, sailors of those boats must notify CGSC by no later than 1700 on December 26, 2023, whether they will launch, haul and store at Regatta Park.
- 21.3 Each boat on the Regatta Park premises shall have a dolly with the owner's name clearly marked on or near the handle.
- 21.4 Vehicle parking inside the CGSC entrance gate is reserved for Members ONLY. Offsite (paid) parking is available nearby on the circle just outside the CGSC Main Gate, in the underground public parking garage a half block up McFarlane, or elsewhere nearby.
- 21.5 All boats must be rigged in the open grass area of Regatta Park, not in the trailer park area.
- 21.6 All skippers and crews must properly dispose of trash while ashore at CGSC or afloat. Trash left on the ground will not be tolerated.
- 21.7 Refuse may be given to any RC vessel between races.

22. RISK STATEMENT

- 22.1 RRS 3 states: 'The responsibility for a boat's decision to participate in a race or to continue to race is hers alone.' By participating in this event each competitor agrees and acknowledges that sailing is a potentially dangerous activity with inherent risks. These risks include strong winds and rough seas, sudden changes in weather, failure of equipment, boat handling errors, poor seamanship by other boats, loss of balance on an unstable platform and fatigue resulting in increased risk of injury. **Inherent in the sport of sailing is the risk of permanent, catastrophic injury or death by drowning, trauma, hypothermia, or other causes.**

CGSC MANAGER Lauren Simpson, manager@cgsc.org

DOCKMASTER Eric Lindeman, dockmaster@cgsc.org

RACE COMMITTEE CHAIR Susan Walcutt, walcutts@bellsouth.net

EVENT CHAIR Steve Herman, sherman@dlawton.com

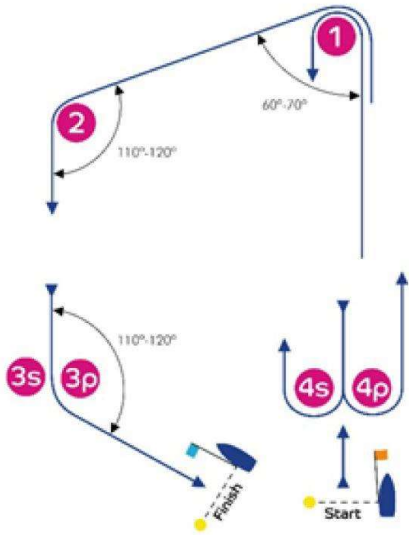
PRO Matt Bounds, mbounds@comcast.net

NACRA 15 CRO John Casey, john.casey@LYC1938.org

ADDENDUM No. 1

COURSE ILLUSTRATIONS

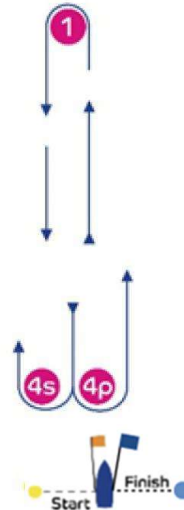
I



Course: Inner Trapezoid

Signal	Mark Rounding Order
I2	Start - 1 - 4s/4p - 1 - 2 - 3p - Finish
I3	Start - 1 - 4s/4p - 1 - 4s/4p - 1 - 2 - 3p - Finish
I4	Start - 1 - 4s/4p - 1 - 4s/4p - 1 - 4s/4p - 1 - 2 - 3p - Finish

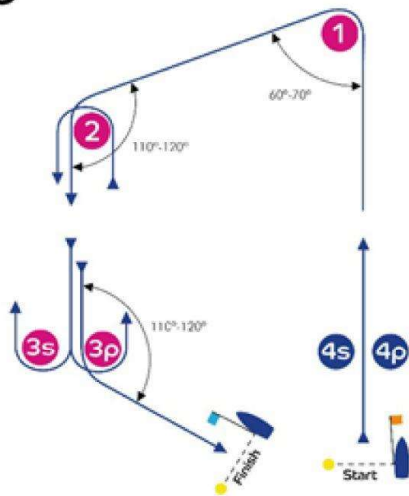
L



Course: Windward/Leeward

Signal	Mark Rounding Order
L2	Start - 1 - 4s/4p - 1 - Finish
L3	Start - 1 - 4s/4p - 1 - 4s/4p - 1 - Finish
L4	Start - 1 - 4s/4p - 1 - 4s/4p - 1 - 4s/4p - 1 - Finish

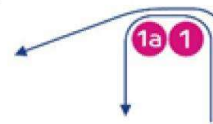
O



Course: Outer Trapezoid

Signal	Mark Rounding Order
O2	Start - 1 - 2 - 3s/3p - 2 - 3p - Finish
O3	Start - 1 - 2 - 3s/3p - 2 - 3s/3p - 2 - 3p - Finish
O4	Start - 1 - 2 - 3s/3p - 2 - 3s/3p - 2 - 3s/3p - 2 - 3p - Finish

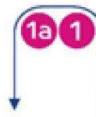
IA



Course: Same as Course I except with Offset Mark 1A

Signal	Mark Rounding Order
IA2	Start - 1 - 1a - 4s/4p - 1 - 1a - 2 - 3p - Finish
IA3	Start - 1 - 1a - 4s/4p - 1 - 1a - 4s/4p - 1 - 1a - 2 - 3p - Finish
IA4	Start - 1 - 1a - 4s/4p - 1 - 1a - 4s/4p - 1 - 1a - 4s/4p - 1 - 1a - 2 - 3p - Finish

LA



Course: Same as Course L except with Offset Mark 1A

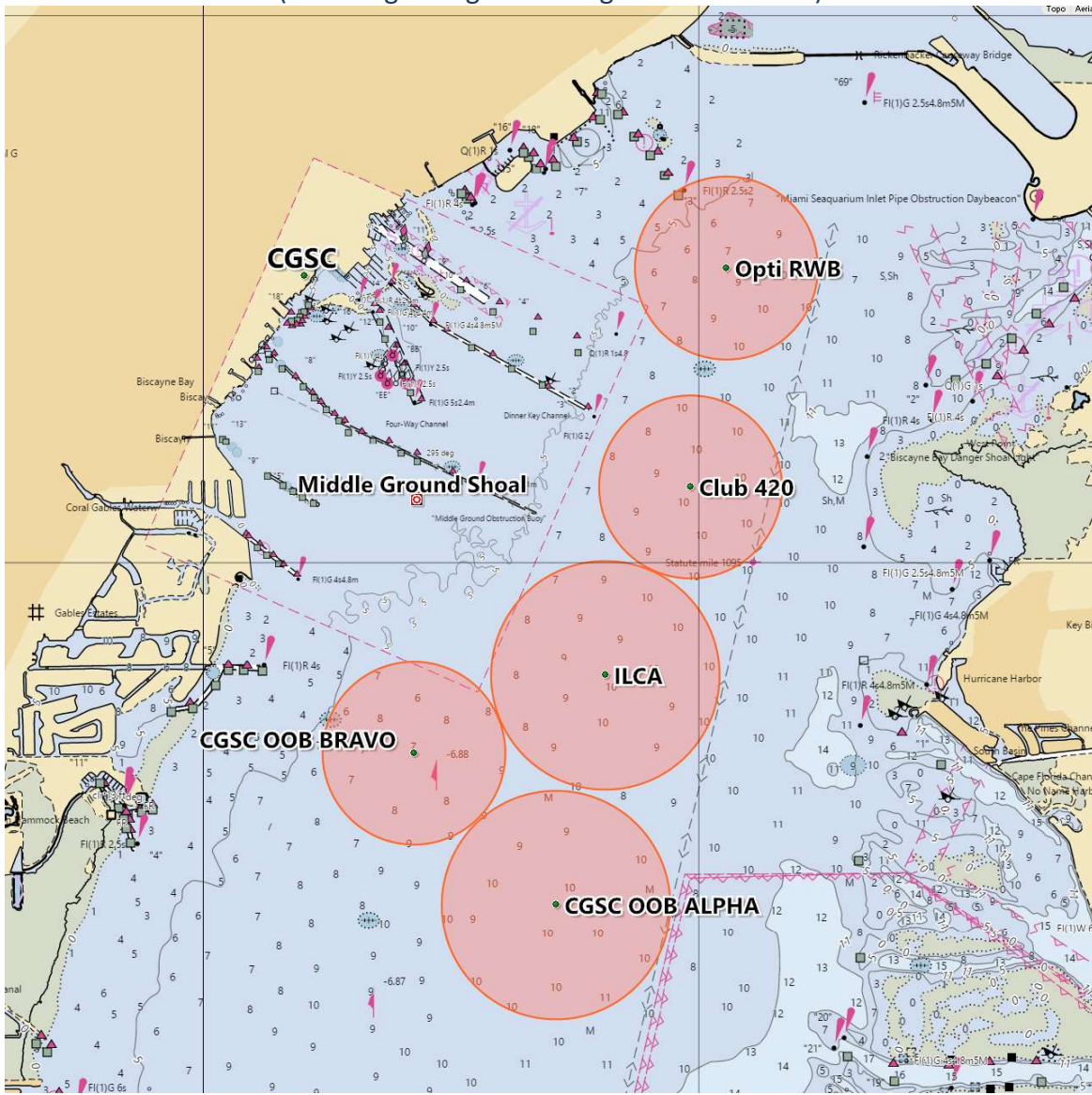
Signal	Mark Rounding Order
LA2	Start - 1 - 1a - 4s/4p - 1 - 1a - Finish
LA3	Start - 1 - 1a - 4s/4p - 1 - 1a - 4s/4p - 1 - 1a - Finish
LA4	Start - 1 - 1a - 4s/4p - 1 - 1a - 4s/4p - 1 - 1a - 4s/4p - 1 - 1a - 4s/4p - 1 - 1a - Finish

If a gate mark is missing, the remaining mark shall be left to port
 Note that on courses L and LA, marks 4S and 4P are not marks of the course on the final leg.
A shorter distance Mark 1 will be set for the Snipe and Finn classes only.

ADDENDUM No. 2

RACE AREAS

(Including Orange Bowl Regatta Race Circles)



Circle	VHF	Diameter (nm)	Center - Lat/Long - Degrees, decimal minutes
Opti RWB	71	1.00	N25°43.616 W080°11.833
ILCA 4/6/7	74	1.25	N25°41.383 W080°12.566
C420	77	1.00	N25°42.416 W080°12.050
Opti Green	78	0.85	N25°43.801 W080°13.189
CGSC OOB Alpha	73	1.25	N25°40.123 W080°12.865
CGSC OOB Bravo	69	1.00	N25°40.956 W080°13.725