



# 61<sup>st</sup> ANNUAL - OPEN ORANGE BOWL REGATTA

Coconut Grove Sailing Club - Miami, FL

December 27-30, 2023

## SAILING INSTRUCTIONS

### WASZP CLASS ONLY

#### 1. RULES

- 1.1 The 2023 CGSC Open Orange Bowl Regatta will be governed by the “The Rules” as defined in the current Racing Rules of Sailing (RRS).
- 1.2 RRS 40.1 (Personal Flotation Devices) applies at all times while afloat.
- 1.3 [DP] All boats shall check in with the RC Signal Vessel prior to the Warning Signal of the first race each day by sailing past the stern of the Signal Vessel on starboard tack and hailing her sail number until acknowledged by the Race Committee.
- 1.4 The Vakaros RaceSense system will be utilized by the Race Committee (RC). *This changes RRS 41(c)*. Each boat shall have a working Vakaros Atlas 2 configured for RaceSense at check-in and shall be mounted on the aft side of the mast at all times while racing. Each boat shall either provide a working Atlas 2 at check-in for configuration with RaceSense, or an Atlas 2 will be provided by Vakaros to any boat that does not have one available. Failure of an Atlas 2 or the RaceSense system shall not be grounds for opening a hearing considering redress. *This changes RRS 63.1*.
- 1.5 Refer to NoR for other rules that are changed and requirements for the Waszp.

#### 2. COMMUNICATION WITH COMPETITORS

- 2.1 Notices to competitors will be posted on the Official Notice Board (ONB) at Regatta Network and by email to all competing boats affected by this notice. The URL for the ONB is [https://www.regattanetwork.com/event/26984#\\_newsroom](https://www.regattanetwork.com/event/26984#_newsroom). Failure of a boat to receive or read any such emails and notices will not be grounds for redress. *This changes RRS 62.1(a)*.
- 2.2 There will be a competitor briefing on Thursday, December 28<sup>th</sup> at 0900 at Regatta Park.
- 2.3 Race Results will be on Regatta Network, at the URL link above.

#### 3. CHANGES TO SAILING INSTRUCTIONS

- 3.1 Written changes will be posted by 1000 on Wednesday, December 27<sup>th</sup>, and thereafter by 0830 on the day they will take effect. However, any changes in the Schedule of Races will be posted by 1000 on Wednesday, December 27, or by 1900 or the protest time limit (whichever is later) on the day before they take effect.

- 3.2 Changes to the Sailing Instructions may be made on the water in accordance with RRS 90.2(c). The RC Signal Vessel shall display Code Flag “L” (with one sound) and Competitors shall approach the Signal Vessel and orally receive the change or read the change on a board posted on the Signal Vessel.

#### 4. SIGNALS MADE ASHORE

- 4.1 Signals made ashore will be displayed from the CGSC flagpole and posted to the ONB.  
 4.2 When Code Flag “L” is displayed ashore, a notice to competitors has been posted on the Official Notice Board, and notification will be sent to competing boats by email.  
 4.3 When Code Flag “AP” is displayed ashore, “1 minute” is replaced with “not less than 60 minutes” in the race signal AP. *This changes RRS Race Signals AP.*

#### 5. SCHEDULE

- 5.1 The racing schedule for the regatta will be as follows (see the NoR for shore-side events):

<b>Thursday, Dec.28</b>	
Waszp Competitors’ briefing at Regatta Park	0900
Bravo Course 1 <sup>st</sup> warning signal: Waszps	1100
<b>Friday, Dec. 29</b>	
Bravo Course 1 <sup>st</sup> warning signal: Waszps	1100
<b>Saturday, Dec. 30</b>	
Bravo Course 1 <sup>st</sup> warning signal: Waszps	1200
Bravo Course – No warning signal after this time	1400
Awards Ceremony	ASAP After Racing

- 5.2 Thirteen (13) races are scheduled for the Waszp class.

#### 6. CLASS FLAGS

- 6.1 The class flag is a black Waszp logo on a yellow field.

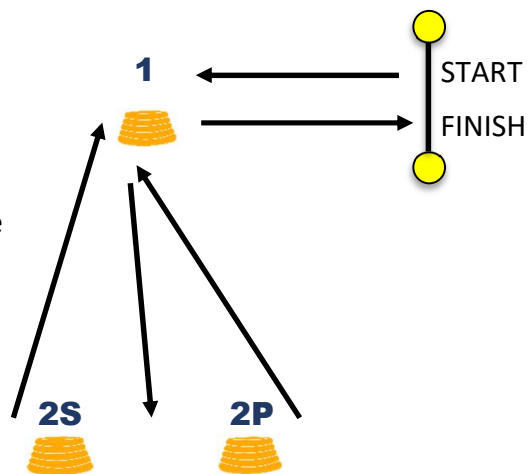
#### 7. RACING AREA

- 7.1 Waszps will race on the course identified as “Bravo” on Addendum 1 – Race Areas. Bravo is located on Biscayne Bay in an area approximately 1.9 miles on a bearing of 185° from the John A. Brennan Channel Marker "1" (Fl. G 5 sec 8ft).  
 7.2 **Competitors are strongly advised to avoid the Middle Ground Shoal (white marker) identified on the chart in Addendum No. 1 - Race Areas.**

#### 8. COURSE

START – 1 (to port) – 2S/2P (between the marks) – 1 (to starboard) – FINISH

The colors of the start/finish marks are representative and may not reflect actual marks used.



## 9. MARKS

- 9.1 Marks 1, 2P/2S (the gate) will be orange MarkSetBots. MarkSetBots are robotically controlled marks. Routine movement of these marks on the course will not be grounds for redress. This includes marks returning to station after having been pushed away by a competitor, and collisions with marks that do not cause damage. *This changes RRS 60.1(b) and 62.1(a). RRS 31 still applies.*
- 9.2 Starting and Finishing Marks are as provided in SI 10.1 and 12.1, respectively.

## 10. THE START

- 10.1 The starting line will be between the Vakaros Atlas devices mounted on two inflatable marks.
- 10.2 A boat starting later than four (4) minutes after her starting signal will be scored Did Not Start (DNS) without a hearing. (*This changes RRS A5.1 and A5.2.*)

## 11. [RESERVED]

## 12. THE FINISH

- 12.1 The finishing line will be between the Vakaros Atlas devices mounted on two inflatable marks.

## 13. TIME LIMITS

- 13.1 The time limit and target time for each class (in minutes) are as follows:

Class:	First Mark	Race	Target Time
Waszp	2 minutes	15 minutes	6 minutes

- 13.2 If no boat has passed the first mark within the Mark 1 Time Limit, the race shall be abandoned.
- 13.3 After the first boat finishes, any boats on the downwind leg will be scored in their position on the racecourse at the sole discretion of the race committee. *This changes RRS 35, A5.1 & A5.2.*
- 13.4 Failure to meet the target time will not be grounds for redress. *This changes RRS 62.1(a).*

## 14. ALTERNATIVE PENALTIES

- 14.1 RRS 44.1 and Appendix V1 are changed so that the Two-Turns Penalty is replaced by the One-Turn penalty.
- 14.2 After a race, a boat that may have broken one or more rules of Part 2 or RRS 31 in an incident while racing may request to take a Post-Race Penalty for that incident. A boat takes the penalty by completing the online Penalty Acknowledgement form [here](#). The penalty shall be a 25% Scoring Penalty, calculated in accordance with RRS 44.3(c). However, RRS 44.1(a) and (b) apply, and the penalty shall not be taken after a protest hearing involving the incident has begun.

## 15. PROTEST AND REDRESS REQUESTS

- 15.1 Protests and requests for redress shall be emailed within the protest time limit, which is one (1) hour after the RC Signal Vessel docks for each course area.
- 15.2 Scoring inquiries should be initiated by filling out the online Scoring Inquiry form [here](#). Alternatively, a completed Scoring Inquiry form may be photographed and emailed to [ScoringInquiry@cgsc.org](mailto:ScoringInquiry@cgsc.org). Also, questions about the status of scoring inquiries can be emailed to [ScoringInquiry@cgsc.org](mailto:ScoringInquiry@cgsc.org). The RC will investigate, get back to you, and attempt to resolve the issue. If the scoring inquiry turns into a redress request, then the redress time limit will have been satisfied if the Scoring Inquiry form was submitted before the redress time limit expired and the request is made within 30 minutes after the inquiry has been answered.

- 15.3 Protests and requests for redress should be initiated by filling out the online Protest form [here](#). Additionally, if a diagram is required, it should be photographed and emailed to [Protest@cgsc.org](mailto:Protest@cgsc.org). Alternatively, a completed Protest form may be photographed and emailed to [Protest@cgsc.org](mailto:Protest@cgsc.org). Also, questions about the status of protests and redress requests can be emailed to [Protest@cgsc.org](mailto:Protest@cgsc.org).
- 15.4 Parties to hearings, and their witnesses, should report to the protest desk by the time scheduled. The protest desk is at Coral Reef Yacht Club, on the second floor of the boat house (white building) at the bayside end.
- 15.5 It is a boat's sole responsibility to check the ONB at [Regatta Network](#) or its email promptly after the end of the protest filing time to see if she is cited in a protest.
- 15.6 The Race Committee will post to the ONB a list of penalties being assigned by the race committee and protests reported to the race committee prior to the end of the protest time limit. The deadline for requesting redress based on these scores will be either 30 minutes after posting of the penalty notice or the protest time limit, whichever is later. *This changes RRS 62.2.*
- 15.7 In a protest decision, the protest committee may impose suitable penalties, other than disqualifications, for violations of non-Part 2 rules, RRS 31 or for rules with no penalty specified in accordance with RRS 64.2.

## **16. SCORING**

- 16.1 A minimum of three (3) races must be completed to constitute a series.
- 16.2 In accordance with RRS A2.1, a boat's series score shall be the total of her race scores excluding her worst score after six (6) races have been completed.

## **17. PRIZES**

- 17.1 Trophies will be awarded to the top five finishers with 15 or more entries, to the top three finishers with 10 to 14 entries, to the top two finishers with 5 to 9 entries.

## **18. SAFETY REQUIREMENTS**

- 18.1 A boat that retires from a race or does not intend to start a scheduled race shall promptly report this to the Race Committee via hailing and receive acknowledgement. If this is not possible, once back to shore, the skipper shall email [CGSCrace@gmail.com](mailto:CGSCrace@gmail.com).
- 18.2 Coach and support vessels are required by the Race Committee to monitor Race Committee VHF channel **69**. In addition, they shall provide assistance to any competitor in danger, if notified to do so by the Race Committee.

## **19. COACH VESSEL & SUPPORT VESSEL (PARENT & SPECTATOR)**

- 19.1 Coach Vessels shall register with CGSC during Registration, receive a flag, and sign a credit card authorization. Upon request, a mooring ball will be assigned for overnight use. The vessel will be charged \$80 USD if the flag is not returned at the end of the regatta. No coach vessel will be allowed on the course without a flag.
- 19.2 Except when rendering aid, team leaders, coaches and other support persons shall stay 100 meters away from all competitors and outside the trapezoid from the time of the preparatory signal for the first class to start until all boats have finished or retired or the race committee signals a postponement, general recall or abandonment.
- 19.3 Launching of coach vessels not already in the water will NOT be permitted at the Coconut Grove Sailing Club facilities. There is no dockage available for non-CGSC coach or support vessels. Non-CGSC coach vessels shall not dock at any time, except they may touch and go on the north and south dock (if the coach remains with the boat). Other non-CGSC support vessels shall not dock at any time. If a non-CGSC coach or support vessel is left unattended on any dock, then this

violation of the rules may result in penalties up to and including expulsion of the vessel from the regatta.

- 19.4 A hearing may be called if a coach or support vessel fails to comply with the requirements of SI 19. The penalty for failing to comply with these requirements or the oral instructions of the Race Committee or Protest Committee will be at the discretion of the Protest Committee. **The penalty may be imposed on any or all boats associated with the support or coach vessel.**

## **20. RADIO COMMUNICATION**

- 20.1 While racing, a boat shall neither make radio transmissions nor receive radio communication not available to all boats. This restriction also applies to mobile phones, cell phone calls and text messages.

## **21. VENUE AND TRASH DISPOSAL**

- 21.1 All Waszps will be launched, hauled and stored at Regatta Park.
- 21.2 Boats from Biscayne Bay Clubs other than CGSC may launch from and return to their own clubs. However, sailors of those boats must notify CGSC by no later than 1700 on December 26, 2023, whether they will launch, haul and store at Regatta Park.
- 21.3 Each boat on the Regatta Park premises shall have a dolly with the owner's name clearly marked on or near the handle.
- 21.4 Vehicle parking inside the CGSC entrance gate is reserved for Members ONLY. Offsite (paid) parking is available nearby on the circle just outside the CGSC Main Gate, in the underground public parking garage a half block up McFarlane, or elsewhere nearby.
- 21.5 Except as provided by SI 21.2, all boats will be launched from the ramps at Regatta Park.
- 21.6 All boats must be rigged in the open grass area of Regatta Park, not in the trailer park area.
- 21.7 All skippers and crews must properly dispose of trash while ashore at CGSC or afloat. Trash left on the ground will not be tolerated.
- 21.8 Refuse may be given to any RC vessel between races.

## **22. RISK STATEMENT**

- 22.1 RRS 3 states: 'The responsibility for a boat's decision to participate in a race or to continue to race is hers alone.' By participating in this event each competitor agrees and acknowledges that sailing is a potentially dangerous activity with inherent risks. These risks include strong winds and rough seas, sudden changes in weather, failure of equipment, boat handling errors, poor seamanship by other boats, loss of balance on an unstable platform and fatigue resulting in increased risk of injury. **Inherent in the sport of sailing is the risk of permanent, catastrophic injury or death by drowning, trauma, hypothermia, or other causes.**

**CGSC MANAGER** Lauren Simpson, [manager@cgsc.org](mailto:manager@cgsc.org)

**DOCKMASTER** Eric Lindeman, [dockmaster@cgsc.org](mailto:dockmaster@cgsc.org)

**RACE COMMITTEE CHAIR** Susan Walcutt, [walcutts@bellsouth.net](mailto:walcutts@bellsouth.net)

**EVENT CHAIR** Steve Herman, [sherman@dlawton.com](mailto:sherman@dlawton.com)

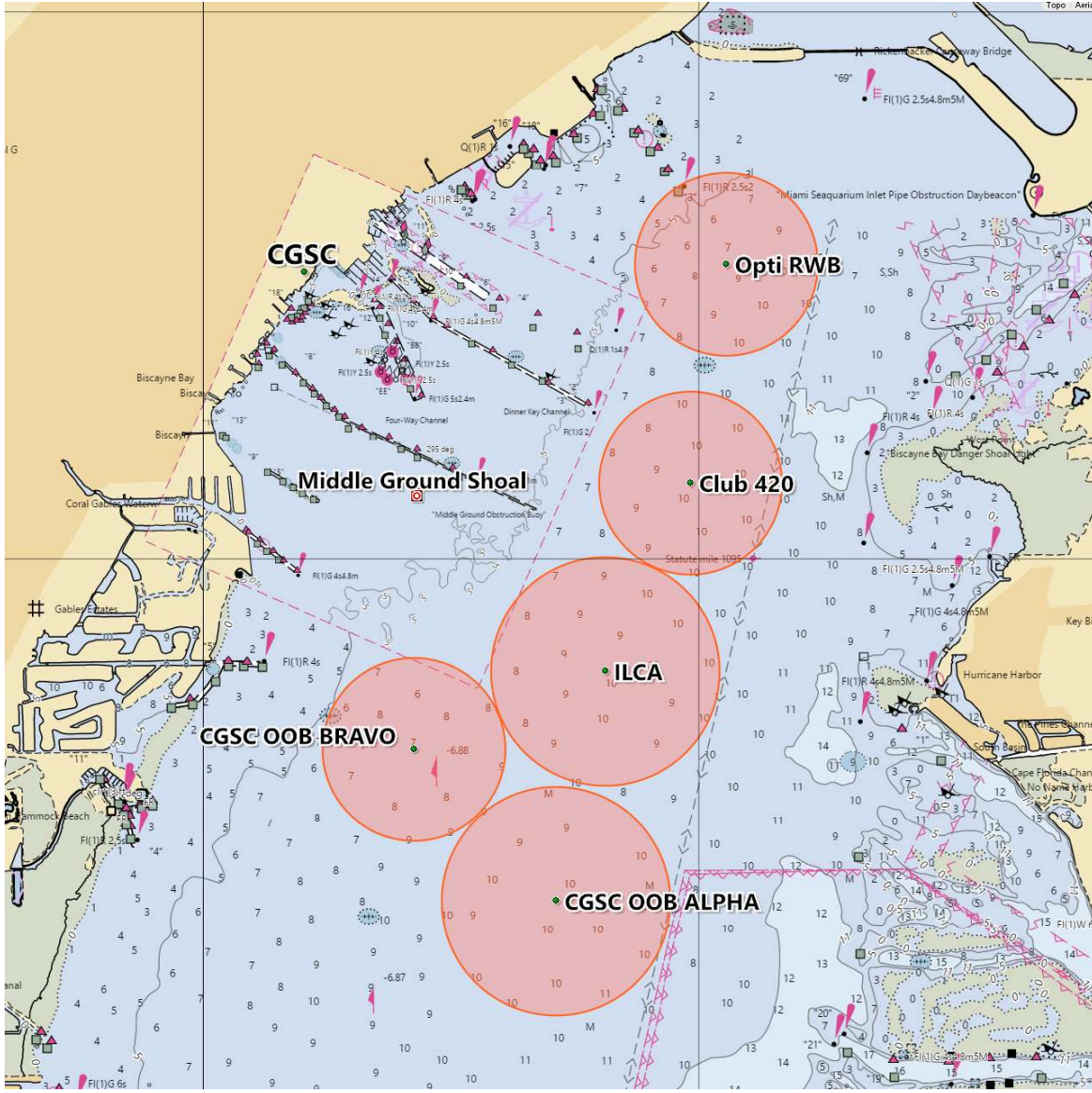
**PRO** Matt Bounds, [mbounds@comcast.net](mailto:mbounds@comcast.net)

**WASZP CRO** Agustin Ferrario, [agustin@wecanfoil.org](mailto:agustin@wecanfoil.org)

# ADDENDUM No. 1

## RACE AREAS

(Including Orange Bowl Regatta Race Circles)



Circle	VHF	Diameter (nm)	Center - Lat/Long - Degrees, decimal minutes
Opti RWB	71	1.00	N25°43.616 W080°11.833
ILCA 4/6/7	74	1.25	N25°41.383 W080°12.566
C420	77	1.00	N25°42.416 W080°12.050
Opti Green	78	0.85	N25°43.801 W080°13.189
CGSC OOB Alpha	73	1.25	N25°40.123 W080°12.865
CGSC OOB Bravo	69	1.00	N25°40.956 W080°13.725