



2023 James T. Liston Turkey Day Regatta

November 17-19, 2023

Organizing Authority: The Houston Yacht Club
Shoreacres, TX

SAILING INSTRUCTIONS

Preamble The notation '[NP]' in a rule of the sailing instructions (SIs) means that a boat may not protest another boat for breaking the rule. This changes RRS 60.1(a). The notation "[DP]" means the protest committee may impose a discretionary penalty for breach of the pertinent SI or Rule.

1. RULES

- 1.1. This regatta will be governed by the rules as defined in the current edition of The Racing Rules of Sailing (RRS), the official Notice of Race (NOR) and these sailing instructions (SIs), including all Attachments and Addenda which may be applicable under these sailing instructions.
- 1.2. In case of conflict between the NOR and these SIs, the SIs will prevail. This changes RRS 63.7.
- 1.3. [DP] Prior to the starting time for the first race of the day, all boats shall check-in with, and be recognized by the Race Committee (RC) Signal boat displaying Code Flag "L" by passing close astern on starboard tack and hailing her sail and class. Failure to check-in will result in a 20% scoring penalty for the first race.

2. CHANGES IN SAILING INSTRUCTIONS

- 2.1. Any change to the sailing instructions will be posted before 0800 hrs on the day it will take effect, except that any change in schedule of races will be posted by 2000 hrs on the day before it will take effect.

3. COMMUNICATIONS WITH COMPETITORS

- 3.1. Notices to competitors will be posted on the official notice board "Notice Information Board" located in the breezeway at HYC adjacent to the HYC Offices.
- 3.2. The race office is located at 3620 Miramar, Shoreacres, TX 77571, 281-471-1255.
- 3.3. As a courtesy, all changes to race documents may be communicated to competitors via Regatta Network at the email address provided during registration. In the event no email address is provided by the competitor, it is the responsibility of the competitor to check the Official Notice Board.
- 3.4. On the water, the Race Committee (RC) intends to monitor and communicate with competitors on VHF radio:
Division 1 - channel 68
Division 2 - channel 69
- 3.5. [DP] While racing, from the first warning signal until the end of the last race of the day, except in an emergency, a boat shall not make voice or data transmissions and shall not receive voice or data communications that is not available to all boats.

4. CODE OF CONDUCT

4.1. [DP] Competitors and support persons shall comply with reasonable requests from race officials.

5. SIGNALS MADE ASHORE

5.1. Signals made ashore will be displayed from the signal mast on the Houston Yacht Club lawn.

5.2. When Code Flag “AP” is displayed ashore, ‘1 minute’ is replaced with ‘not less than 60 minutes’ in the Race Signals AP section (RRS).

5.3. Signal flags may be flown alone or above one or more Division and/or class flags.

5.3.1. When flag AP over “1” is displayed, the signal applies to the keelboat line.

5.3.2. When flag AP over “2” is displayed, the signal applies to the centerboard line.

5.3.3. When flag AP over “3” is displayed, the signal applies to the Opti line.

5.3.4. If only flag AP is displayed, the signal pertains to all the lines. This changes RRS Race Signals.

6. SCHEDULE OF RACES

6.1. Races will be sailed according to the schedule in the NOR, unless changes are made as defined in 3.1 and 3.3 of these SIs.

6.2. All times are GPS times.

6.3. The scheduled time of the first race on Saturday 11/18/23 is 1100 hrs and on Sunday 11/19/23 is 1100 hrs.

6.4. The starting order of races will be announced at the competitor’s meeting and posted on the Official Notice Board.

Friday, Nov 17	1900 hrs	Competitor’s Briefing <i>HYC Ballroom</i>
Saturday, Nov 18	1000 hrs	Centerboard/Opti Competitor’s Briefing <i>Beachcomber</i>
	1100 hrs	First Warning Signal – All Divisions
Sunday, Nov 19	1100 hrs	First Warning Signal – All Divisions
	1500 hrs	No Warning Signal after 1500 hrs

7. CLASS FLAGS

7.1. Divisions, classes and class flags are noted on **Attachment 1**.

8. RACING AREA

8.1. **Attachment 2** shows the location of the racing areas.

8.2. The races will be in that part of the Bay bounded by Morgan’s Point on the north, the Bayport Ship Channel on the south, the Houston Ship Channel on the east and the La Port/Shoreacres shoreline on the west.

9. THE COURSES

9.1. The courses are shown in **Attachment 3**. The schematic lists the legs, the order in which the marks are to be passed and the side on which each mark is to be left.

9.2. All marks shall be rounded to port.

9.3. No later than the warning signal, the RC Signal boat will signal the course for that race. The RC Signal boat will signal the Class and the number of legs with a number pennant. For Optis, the RC Signal boat may signal the Class and course on a dry erase board.

10. MARKS

10.1. All rounding marks are floating tetrahedrons, balls or other floating mark. The start and finish pin will be a floating object.

10.2. For Division 1, the original W/L marks are 5 ft yellow tetrahedrons and the W’ is an 8 ft yellow tetrahedron. The change marks are orange tetrahedrons. For Division 2, original W mark for the Optis is a yellow ball and the W’/L marks for the centerboards are yellow tetrahedrons. Change marks are an orange ball and an orange tetrahedron.

11. OBSTRUCTIONS

11.1. The Houston Ship Channel and the Bayport Ship Channels are obstructions. The RC signal boat, start and finish lines are obstructions.

12. THE START

- 12.1. Races will be started using RRS 26.
- 12.2. The starting line will be between an orange flag on the Signal boat on the starboard end and the course side of a floating shape on the port end.
- 12.3. [DP] Boats whose preparatory signal has not been made shall keep clear of the starting area and of all boats whose preparatory signal has been made.
- 12.4. If any part of a boat's hull is on the course side of the starting line at her starting signal and she is identified, the race committee will, as a courtesy, attempt to hail her sail number. Failure to hail her number, failure to hear such a hail or the order in which boats are hailed will not be grounds for a request for redress. This changes RRS 62.1(a).
- 12.5. A boat starting more than 5 minutes after her start time will be scored Did Not Start (DNS) without a hearing. This changes RRS A5.1 and A5.2.
- 12.6. The Race Committee may elect to trail a line (not to exceed 30') attached to a floating object behind the Race Committee boat. Hitting the floating object or running over the line shall be treated as hitting the Race Committee boat.

13. CHANGE OF THE NEXT LEG OF THE COURSE

- 13.1. For Divisions 1 and 2, to change the next leg of the course, the race committee will lay a new orange tetrahedron (or move the finishing line) and remove the original mark as soon as practicable. The change will be signaled before the leading boat in a class has begun the leg, although the new mark may not yet be in position.
- 13.2. The Class Flag will be displayed with Code Flag C to indicate the class for which this change is being made. If there is no class flag, the change is made for all classes.
- 13.3. When in a subsequent change a mark is replaced, it will be replaced by the original mark.

14. THE FINISH

- 14.1. The finish line will be between a staff displaying a blue flag on a Committee boat and the course side of a mark or floating shape.
- 14.2. For Division 1 and Division 2 windward finishes, the finish line will be located approximately 0.1 NM to windward of the windward mark. For leeward finishes, the finish mark will be on the opposite side of the Signal boat from the start line.
- 14.3. If the race committee boat is absent when a boat finishes, she should report her finishing time, and her position relative to nearby boats, to the race committee at the first reasonable opportunity.
- 14.4. Code Flag A displayed from the finish boat shall indicate there is no more racing for the day.

15. PENALTY SYSTEM

- 15.1. Appendix V shall apply to all competitors except the J/24 competitors.
- 15.2. RRS 44.3 applies to the J/24 competitors
- 15.3. [DP] A boat that has taken Penalty Turns shall notify the RC signal boat at the first reasonable opportunity. She shall also inform the RC of the identity of the other boat involved in the incident.

16. TIME LIMITS

- 16.1. The Division, Mark W (W') Time Limit, Race time Limit and Finishing Window Time are shown in the table below:

DIVISION	MARK W (W') TIME LIMIT	RACE TIME LIMIT	FINISHING WINDOW
1 - Keel Boats	30 min	90 min	20 min
2 - Centerboards	30 min	60 min	20 min
3 - Optis	20 min	45 min	15 min

- 16.2. If no boat has passed the first mark within the Mark W (W') Time Limit for that Class, the race for that Class will be abandoned.
- 16.3. The Finishing Window Time is the time for boats of that Class to finish after the first boat sails the course and finishes. Boats failing to finish within the Finishing Window, and not subsequently retiring, penalized, or given redress, will be scored Time Limit Expired (TLE) without a hearing. A boat scored TLE shall be scored points for the number of boats finishing the race plus 2. This changes RRS 35, A5.1, A5.2 and A10.
- 16.4. Failure to meet any of the time limits will not be grounds for redress. The changes RRS 62.1(a).

17. PROTESTS AND REQUESTS FOR REDRESS

- 17.1. **Notification of Intent to Protest:** Intent to protest shall be signaled in accordance with RRS 61.1. Boats intending to file a protest shall also inform the RC and be acknowledged before leaving the finish area.
- 17.2. **Forms:** Hearing request forms are available at the HYC race office.

- 17.3. **Time Limits:** The protest time limits for competitors will be posted on the official notice board "Notice Information Board". The protest time limit for a boat protesting another is 60 minutes after the RC Signal boat for that boat's particular Division enters the HYC harbor. The time limit for the Race Committee to protest a boat or call a hearing to consider redress is 1700 hrs on Sunday, November 19, 2023 or when it learns that a boat may have broken a rule or caused injury or serious damage, whichever is later. Scoring errors shall be reported as soon as they are noticed. If the RC refuses to correct an alleged scoring error, the time limit to request redress based on that decision is 30 minutes after notice of the refusal is given to the competitor either verbally or in writing (by text message at the phone number indicated on the competitor's entry form). The time limit to request redress based on a Protest Committee decision is 30 minutes after the decision is posted, 30 minutes after the adjusted score is posted, or 1700 hrs on Sunday September 19, 2023, whichever is later. This modifies RRS 60.3, 61.3, and 62.2.
- 17.4. **Notice of hearings:** Hearing times will be posted on the official notice board as soon as reasonably possible to inform competitors of the hearing in which they are parties or named as witnesses and the date and time when the hearings will be held. It is each boat's obligation to check the official notice board for hearing times and to provide accurate contact information on their entry form and on the Hearing Request Form, which includes an email address and mobile telephone number where they can be contacted. As a courtesy only, the Protest Committee will attempt to notify any protested boat of the hearing time by telephone or text at the telephone number provided on the entry form. This SI 17.5 satisfies the notice requirements of RRS 63.2.
- 17.5. **Zoom:** Hearings may be conducted using Zoom. Zoom connectivity will be provided for protest committee members and involved competitors by the organizing authority. Competitors shall provide their own electronic equipment to participate in a Zoom hearing.

18. SCORING

- 18.1. One completed race is required to constitute a regatta.
- 18.2. The scoring system of RRS Appendix A shall apply.
- 18.3. No scores shall be excluded. This changes RRS A2.

19. SAFETY REGULATIONS

- 19.1. [DP] A boat that has checked in and then retires from a race shall notify the RC at the first reasonable opportunity. If this is not possible, she shall notify the HYC office by telephone at 281-471-1255.

20. TRASH DISPOSAL

- 20.1. Trash may be placed aboard official vessels at any time except during a starting sequence of any race.

21. HAUL-OUT RESTRICTIONS

- 21.1. [DP] Boats shall not be hauled out during the regatta except with and according to the terms of prior written permission of the Chief Judge.
- 21.2. No J/22 boats shall remove their rudders without permission of the Chief Judge.

22. DIVING EQUIPMENT AND PLASTIC POOLS

- 22.1. Careening by any means for the purposes of cleaning or inspecting the hull is prohibited. The hull may be cleaned by swimming or keelhauling using ropes or cloth.
- 22.2. Underwater breathing apparatus, plastic pools or their equivalent shall not be used during the regatta.

23. RISK STATEMENT

- 23.1. RRS 3 states: 'The responsibility for a boat's decision to participate in a race or to continue to race is hers alone.' By participating in this event each competitor agrees and acknowledges that sailing is a potentially dangerous activity with inherent risks. These risks include strong winds and rough seas, sudden changes in weather, failure of equipment, boat handling errors poor seamanship by other boats, loss of balance on an unstable platform and fatigue resulting in increased risk of injury. **Inherent in the sport of sailing is the risk of permanent, catastrophic injury or death by drowning, trauma, hypothermia or other causes.** The organizing authority and its volunteers will not accept any liability for material damage or personal injury, death or sickness sustained in conjunction with, prior to, during, or after the regatta.

24. INSURANCE

- 24.1. Each participating boat must be insured with a valid third-party liability insurance.

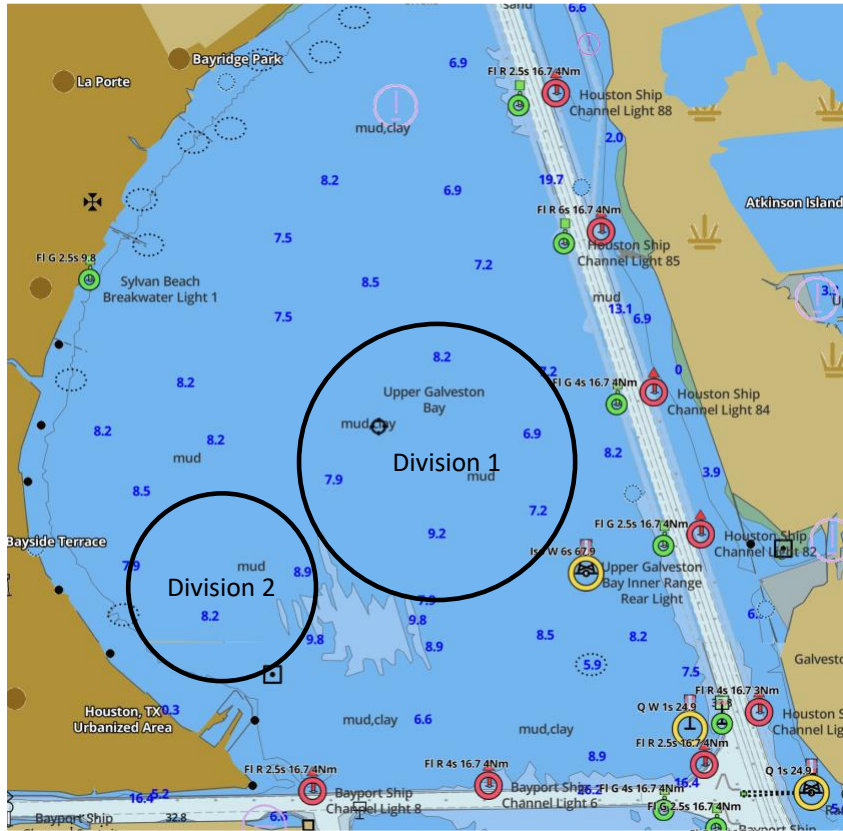
Attachment 1

Class Flags

CLASS	FLAG
DIVISION 1 (Pennant 1)	
J22	green
J24	yellow
PHRF spin	maroon
PHRF nonspin	grey
DIVISION 2 (Pennant 2)	
Sunfish	pink
ILCA 4	maroon
Opti RWB	Opti class

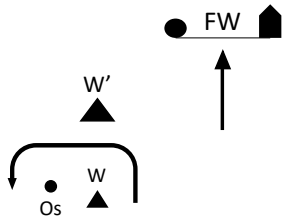
ATTACHMENT 2

Schematic of Upper Galveston Bay

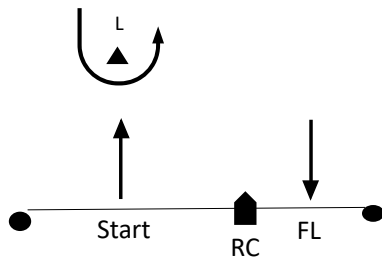


Attachment 3 Courses

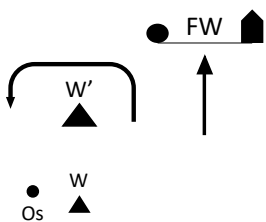
Keel Boat Windward-Leeward Courses



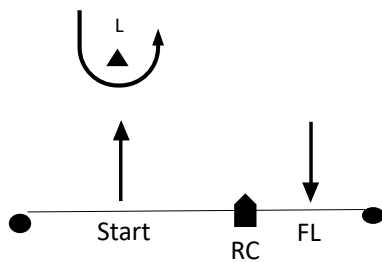
Course	Mark Rounding Order
Pennant 2 (<i>downwind finish</i>)	S-W-Os-FL
Pennant 3 (<i>upwind finish</i>)	S-W-Os-L-FW
Pennant 4 (<i>downwind finish</i>)	S-W-Os-L-W-Os-FL
Pennant 5 (<i>upwind finish</i>)	S-W-Os-L-W-Os-L-FW



PHRF Windward-Leeward Courses

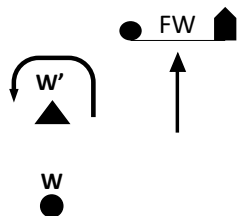


Course	Mark Rounding Order
Pennant 2 (<i>downwind finish</i>)	S-W'-FL
Pennant 3 (<i>upwind finish</i>)	S-W'-L-FW
Pennant 4 (<i>downwind finish</i>)	S-W'-L-W'-FL
Pennant 5 (<i>upwind finish</i>)	S-W'-L-W'-L-FW

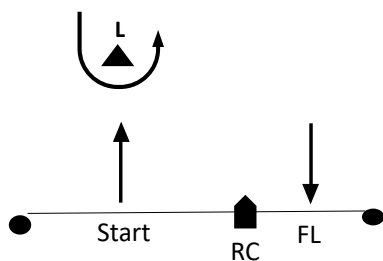


Attachment 3 Courses (Continued)

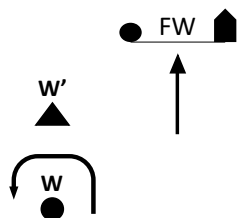
Centerboard Windward-Leeward Courses



Course	Mark Rounding Order
Pennant 2 (<i>downwind finish</i>)	S-W'-FL
Pennant 3 (<i>upwind finish</i>)	S-W'-L-FW
Pennant 4 (<i>downwind finish</i>)	S-W'-L-W'-FL
Pennant 5 (<i>upwind finish</i>)	S-W'-L-W'-L-FW



Opti Windward-Leeward Courses



Course	Mark Rounding Order
Pennant 2 (<i>downwind finish</i>)	S-W-FL
Pennant 3 (<i>upwind finish</i>)	S-W-L-FW
Pennant 4 (<i>downwind finish</i>)	S-W-L-W-FL
Pennant 5 (<i>upwind finish</i>)	S-W-L-W-L-FW

