

# NOTICE OF RACE/SAILING INSTRUCTIONS

Clearwater 420 Open  
January 20-21 2024



Clearwater Community Sailing Center  
1001 Gulf Blvd. 33767

Amended 1/19/2024 18:26

## 1. RULES

- 1.1 The event shall be governed by the rules defined in the Racing Rules of Sailing (RRS)
- 1.2 No national authority prescriptions will apply.
- 1.3 The class rules of the participating classes will apply as amended by the sailing instructions.

## 2. ELIGIBILITY and ENTRY

Classes eligible for entry include Club 420, Scholastic 420

## 3. FEES

- 3.1 The entry fee for competitors is \$140 per boat received by 2400 January 5th.
- 3.2 After 2400 January 5th a \$5 late fee will be added.
- 3.3 Fee includes racing awards, continental breakfast, grab and go on the water snacks, and a t shirt

## 4. SCHEDULE

### Saturday December 20

0800-930 Check In  
0930 Competitors meeting  
~~1000~~ 1100 First possible warning signal

### Sunday December 21

1000 first possible warning  
1400 last possible warning signal  
Awards as soon as possible after racing

## 5. MEASUREMENT

It is the responsibility of each competitor that his/her equipment conforms to the Club 420 Class Association rules.

## 6. Racing Area

Under fair weather all boats will race in the Gulf of Mexico South of Clearwater Pass. In the event of rough weather a Silver Fleet racing circle will be created inside Clearwater Harbor in addition to the Gulf racing circle to allow competitors to choose their racing area according to their abilities.

## 7. Notices To Competitors

7.1 Notices to competitors will be posted on the official notice board in the main entryway.

7.2 Informal information will be shared on the following what's app group: <https://chat.whatsapp.com/Ko7ZW8mHtewE7DrUf28PkV>

## 8. Changes to the Notice of Race/Sailing Instructions

Any changes to the Notice of Race/Sailing Instructions will be posted no later than 60 minutes before the first warning signal for the day it will take effect, except that any change to the schedule of racing will be posted no later than 2100 the night before it will take effect.

## 9. Signals Made ashore

- 9.1 All signals made ashore will be displayed on the official flag pole in the center of CCSC boat park.
- 9.2 When Flag AP is displayed ashore '1 minute' is replaced by 'not less than 20 minutes' in race signal AP.

## 10. Class Flags

Club 420 class flag will be white with the Club 420 logo. The Scholastic Class flag will be numeral pennant '6'.

## 11. Courses

Courses will be described in appendix A. The club 420 course board will be white, the scholastic 420 course board will be yellow.

## 12. Marks

Mark 1, 2, and all gate marks will be a orange tetrahedron, mark S1 will be a green tetrahedron, Start pin will be a yellow cylinder, finish pin will be a yellow sphere.

## 13. The Start

13.1 All races will be started with RRS rule 26 (5 minute) sequence.

13.2 The start line will be between the staff displaying an orange flag and a yellow cylinder.

## 14. The Finish

The finishing line is between a staff displaying a blue flag and a yellow cylinder.

## 15. Time limits

The time limit for the first boat to complete the course is ~~30~~60 minutes the finish window is 15 minutes. The target time is 35-40 minutes. Failure to meet target time will not be grounds for redress.

## 16. Hearing Requests

16.1 The protest time limit is 45 minutes after the signal boat has docked.

16.2 Protest forms are available in the front office and should be turned back into the front office.

16.3 For races held on the last day of racing, scoring inquires must be filed within the protest time limit or 30 minutes after the provisional final results are posted, whichever is later.

## 17. SCORING

17.1 One race is required to be completed to constitute a regatta.

17.2(a) When fewer than 5 races have been completed, a boat's series score will be the total of her race scores.

(b) When 5 to 10 races have been completed, a boat's series score will be the total of her race scores excluding her worst score.

(c) When 10 or more races have been completed, a boat's series score will be the total of her race scores excluding her two worst scores.

## 18. Prizes

Awards shall be given to the Club 420 1-3 overall, and the Scholastic 420 1-3 over all. And first all female boat.

## 19. Safety/Check out System

19.1 Sailors shall check out before they enter the water by putting their organizer supplied lanyard on the 'on the water board'. Failure to check out will result in one(1) point added to the next scored race in the series, regardless of what day it is sailed.

19.2 Sailors shall check back in the by the end of the protest time limit. upon returning to shore by removing their lanyard from the 'on the water board'. Failure to check back in by the end of the protest time limit will result in one(1) point added to the last race scored that day or in the event of no races scored on the day of the infraction one(1) point will be added to the next race scored in the series.

18.3 A US Coast Guard approved PFD shall be worn by all competitors and coaches.

## 19. Support Teams

19.1 Coaches are expected to be good role models for young sailors and conduct themselves accordingly ashore and on the water.

19.2 All support boat helmsman shall wear a kill cord at all times while operating their vessel. Violation of this may be grounds for expulsion from the event.

19.3 Coaching the back half of both fleets is permitted.

19.4 Non coaching support vessels shall stay out of the racing area.

**21. Contact for information** Sailing Director Justin Ahearn Opticcsc@gmail.com or CCSC front office 727 517 7776

## **20 RISK STATEMENT**

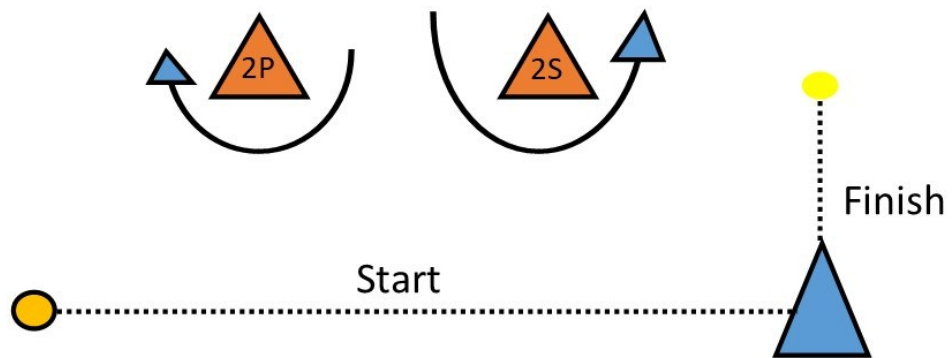
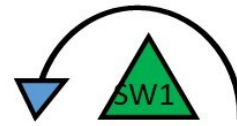
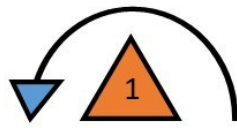
20.1 RRS 3 states: 'The responsibility for a boat's decision to participate in a race or to continue to race is hers alone.' By participating in this event each competitor agrees and acknowledges that sailing is a potentially dangerous activity with inherent risks. These risks include strong winds and rough seas, sudden changes in weather, failure of equipment, boat handling errors, poor seamanship by other boats, loss of balance on an unstable platform and fatigue resulting in increased risk of injury. Inherent in the sport of sailing is the risk of permanent, catastrophic injury or death by drowning, trauma, hypothermia, or other causes.

20.2 The organizing authority including the sponsors, the race committee, the officers, directors, employees and members of the Clearwater Community Sailing Center and all those involved in these organizations will not accept any liability for material damage or personal injury or death sustained in conjunction with or prior to, during, or after the event. An online waiver shall be signed by all competitors and their parent/guardian.

## **21. Contact for information**

Sailing Director Justin Ahearn [Opticcsc@gmail.com](mailto:Opticcsc@gmail.com) or CCSC front office 727 517 7776

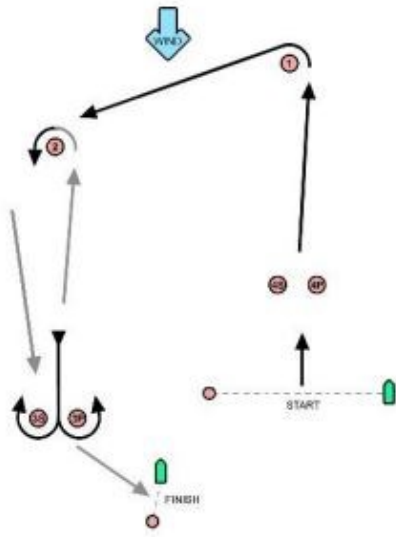
# Appendix A



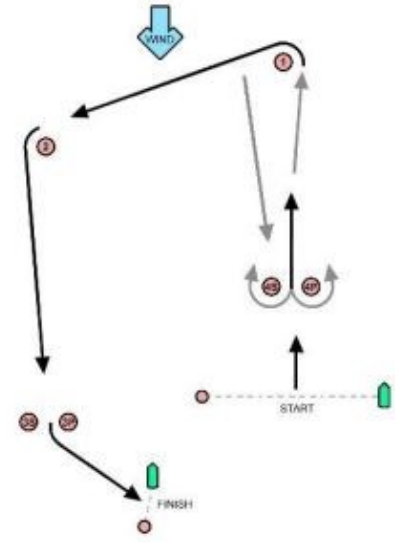
Course	Rounding order
W2	Start - 1 - 2s/2p - Finish
W4	Start - 1 - 2s/2p - 1 - 2s/2p Finish
SW 2	Start - S1 - 2s/2/p - Finish
SW 4	Start - S1 - 2s/2p- S1 - 2S/2p - Finish

# Appendix A

## Course racing – Trapezoid course



Signal	Mark rounding order
O2	Start-1-2-3S/3P-2-3P-Finish
O 1	Start -1-2-3p - Finish



Signal	Mark rounding order
I2	Start-1-4S/4P-1-2-3P-Finish