

NOTICE OF RACE/SAILING INSTRUCTIONS

Albacore Midwinters

December 19-21 2024

Clearwater Community Sailing Center

1001 Gulf Blvd. 33767



1. RULES

Amended 1/19/2024

- 1.1 The event shall be governed by the rules defined in the Racing Rules of Sailing (RRS)
- 1.2 No national authority prescriptions will apply.
- 1.3 The class rules of the participating classes will apply as amended by the sailing instructions.

2. ELIGIBILITY and ENTRY

Classes eligible for entry include Albacore Class Dingy

3. FEES

- 3.1 The entry fee for competitors is \$175 per boat received by 2400 Est January 5th.
- 3.2 After 2400 January 5th a \$5 late fee will be added.
- 3.3 Fee includes racing awards, continental breakfast, grab and go on the water snacks.

4. SCHEDULE

Friday January 19th	Saturday January 20th	Sunday January 21th
0830 Check in	930 competitors meeting	1000 first possible warning
1000 Competitors meeting	1100 First Warning	1400 last possible warning signal
1130 First Warning Signal		Awards as soon as possible after racing

5. MEASUREMENT

It is the responsibility of each competitor that his/her equipment conforms to the Albacore Class Rules.

6. Racing Area

The racing area will be in the Gulf of Mexico South of Clearwater Pass.

7. Notices To Competitors

Notices to competitors will be posted on the official notice board in the main entryway.

8. Changes to the Notice of Race/Sailing Instructions

Any changes to the Notice of Race/Sailing Instructions will be posted no later than 60 minutes before the first warning signal for the day it will take effect, except that any change to the schedule of racing will be posted no later than 2100 the night before it will take effect.

9. Signals Made ashore

- 9.1 All signals made ashore will be displayed on the official flag pole in the center of CCSC boat park.
- 9.2 When Flag AP is displayed ashore '1 minute' is replaced by 'not less than 45 minutes' in race signal AP.

10. Class Flags

The Albacore Class Flag will be code flag F.

11. Courses

Courses will be described in appendix A.

12. Marks

Marks 1, 2, 3s/3p, 4s/4p will be orange tetrahedrons, mark S1 will be a green tetrahedron, Start pin will be a yellow cylinder finish pin will be a yellow sphere.

13. The Start

13.1 All races will be started with RRS rule 26 (5 minute) sequence.

13.2 The start line will be between the staff displaying an orange flag and a yellow cylinder.

14. Change Of The Next Leg Of The Course

To change the next leg of the course the race committee will move the original mark to a new position.

15. The Finish

The finishing line is between a staff displaying blue flag and a yellow sphere.

16. Time limits and Target times

16.1 The time limit for the first boat to complete the course is ~~45 minutes~~ **75 minutes** and the finish window is 15 minutes

16.2 The target time is 45-50 minutes. Failure to reach target time will not be grounds for redress.

17. SCORING

17.1 One race is required to be completed to constitute a regatta.

17.2(a) When fewer than 5 races have been completed, a boat's series score will be the total of her race scores.

(b) When 5 to 11 races have been completed, a boat's series score will be the total of her race scores excluding her worst score.

(c) When 12 or more races have been completed a boat's series score will be the total of her race scores excluding her two(2) worst scores.

18. Prizes

Awards shall be given to skipper and crew of the first 3 overall finishers.

19. Safety/Check out System

19.1 Sailors shall check out before they enter the water by putting their organizer supplied lanyard on the 'on the water board'.

19.2 Sailors shall check back in as soon as possible upon returning to shore by removing their lanyard from the 'on the water board'.

19.3 A US Coast Guard approved PFD shall be worn by all competitors and coaches.

20 RISK STATEMENT

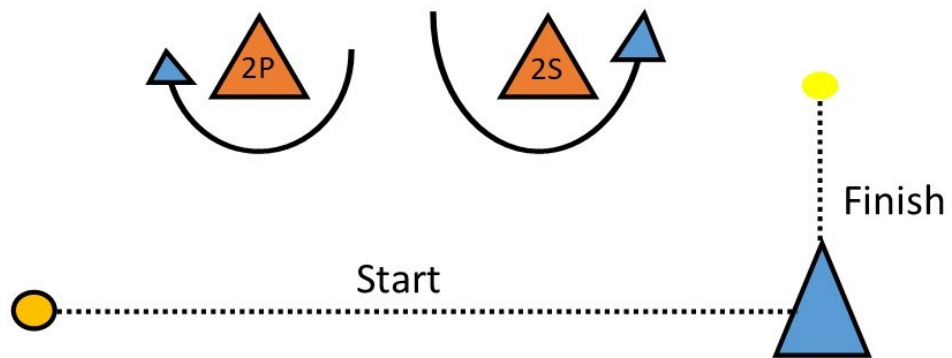
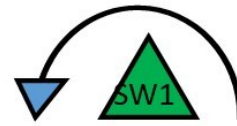
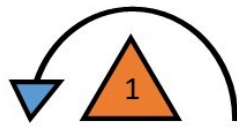
20.1 RRS 3 states: 'The responsibility for a boat's decision to participate in a race or to continue to race is hers alone.' By participating in this event each competitor agrees and acknowledges that sailing is a potentially dangerous activity with inherent risks. These risks include strong winds and rough seas, sudden changes in weather, failure of equipment, boat handling errors, poor seamanship by other boats, loss of balance on an unstable platform and fatigue resulting in increased risk of injury. Inherent in the sport of sailing is the risk of permanent, catastrophic injury or death by drowning, trauma, hypothermia, or other causes.

20.2 The organizing authority including the sponsors, the race committee, the officers, directors, employees and members of the Clearwater Community Sailing Center and all those involved in these organizations will not accept any liability for material damage or personal injury or death sustained in conjunction with or prior to, during, or after the event. An online waiver shall be signed by all competitors and their parent/guardian.

21. Contact for information

Sailing Director Justin Ahearn Opticcsc@gmail.com or CCSC front office 727 517 7776

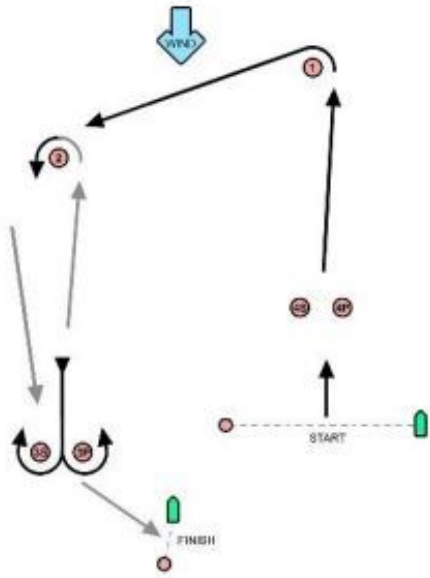
Appendix A



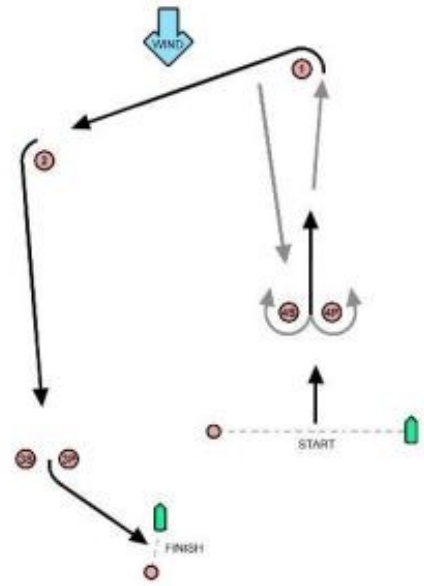
Course	Rounding order
W2	Start - 1 - 2s/2p - Finish
W4	Start - 1 - 2s/2p - 1 - 2s/2p - Finish
SW 2	Start - S1 - 2s/2/p - Finish
SW 4	Start - S1 - 2s/2p- S1 - 2S/2p - Finish

Appendix A

Course racing – Trapezoid course



Signal	Mark rounding order
O2	Start-1-2-3S/3P-2-3P-Finish
O1	Start-1-2-3P-Finish



Signal	Mark rounding order
I2	Start-1-4S/4P-1-2-3P-Finish