



SOUTHWESTERN YACHT CLUB PRESENTS
The Cabrillo Series

CABRILLO II
Sugarloaf Rock
Saturday, January 27, 2024



SAILING INSTRUCTIONS

1 RULES

- 1.1 Per RRS 42.3(i), competitors may use an engine or other propulsion method to avoid large ships in the channel provided they gain no significant advantage in the race.
- 1.2 Add new rule 41(e): (e) help to recover from the water and return on board a crew member, provided the return on board is at the approximate location of the recovery.
- 1.3 If the Race Committee boat is damaged because of a boat breaking a rule, that boat shall be responsible for the repairs.

2 CHANGES TO SAILING INSTRUCTIONS

- 2.1 Any change to the sailing instructions will be posted before **0900** on the day it will take effect, except that any change to the schedule of races will be posted by **2000** on the day before it will take effect.
- 2.2 In accordance with RRS 90.2 (c), oral changes to the Sailing Instructions may be made on the water, communicated to each boat before her warning signal. A change is in effect when the Race Committee (RC) signal boat displays Flag **L** over **A** with one sound signal. Please come within hail of the RC boat to receive the oral changes to the Sailing Instructions.

3 COMMUNICATIONS WITH COMPETITORS

- 3.1 Official notices and amendments will be available online through the [EVENT NOTICE BOARD](#) on this event's page on the [SWYC](#) website.
- 3.2 On the water, the RC will monitor and communicate with competitors on VHF radio channel 68.
- 3.3 **In the event of an on-the-water emergency, contact the US Coast Guard on VHF Channel 16 directly and immediately.**

4 CODE OF CONDUCT

- 4.1 [DP] Competitors and support persons shall comply with reasonable requests from race officials.

5 SCHEDULE OF RACES

- 5.1 Cabrillo II:
Short Course: One race around Sugarloaf Rock on Saturday, January 27, 2024.
Long Course: One race around all the Coronado Islands and Sugarloaf Rock on Sat., January 27, 2024.
- 5.2 The scheduled time of the warning signal for the first class is **1100**.

6 CLASS STARTING ORDER

- 6.1 Classes will start in reverse order, with slower classes starting first and the faster boats starting last.
- 6.2 The RC may cancel or combine starts. It is the responsibility of a boat to start at her signaled start time. You may expect a gap of at least one minute between starting sequences.
- 6.3 Starting order and assignments are posted as NoR Amendment #2 on the [Event Website](#).

7 ENTRIES & CHECK-IN:

- 7.1 [DP] Boats complete their entry by checking in with the RC boat prior to the first warning signal. Boats checking in shall pass the RC boat to starboard and hail with sail number, class, and the *number of souls on board*. Check-in will be complete when the RC boat responds with that information. There will be no radio check-in.
- 7.2 Check-In will commence when the "L" flag is hoisted.
- 7.3 Check-in may continue after the first warning at the sole discretion of the R/C (but not within one minute of any start).
- 7.4 [DP] All boats shall have clearly visible sail numbers of a contrasting color to the body of the sail. Missing, improper, inconsistent, unclear, illegible, or numbers other than those used for check-in, are not permitted, and may result in being scored DNF. RRS 60.2, 63.1, and A5 are modified to add that the RC may disqualify a boat infringing this instruction without a hearing.

8 RACING AREA

- 8.1 The starting area will be in San Diego Bay in the vicinity of SD Channel Buoy 17.
- 8.2 The racing area covers the ocean between San Diego Bay and the Coronado Islands, and the ocean between San Diego Bay and El Descanso Bay in Mexico. For navigation, refer to NGA Chart 18766: *San Diego to Islas De Todos Santos* and [NOAA Chart #18765, Approaches to San Diego Bay](#).
- 8.3 The finish area will be in the vicinity of the entrance to San Diego Bay at SD Channel Buoy 5.

9 COURSE

- 9.1 *Cabrillo II*: There are two different courses. See your class's designated course below.

Short Course: *PHRF 4 and Multihulls*

Start near SD Channel Buoy 17. (See SI 10 The Start)

Leave Sugarloaf Rock to port.

Finish near SD Channel Buoy 5. (See SI 13 The Finish)

Approximately 60nm.

Long Course: *PHRF 3, ORC Sport Boats, ORR-Ez 40s, and ORR Big Boats*

Start near SD Channel Buoy 17. (See SI 10 The Start)

Leave all three Coronado Islands (North, Middle and South) to port.

Leave Sugarloaf Rock to port.

Finish near SD Channel Buoy 5. (See SI 13 The Finish)

Approximately 65nm.

- 9.2 **Sugarloaf Rock:**

Location: El Descanso Bay, Rosarito Beach, Baja California, Mexico.

Latitude: 32° 13' 21.3" (32.2226°) North

Longitude: 116° 57' 48" (116.9633°) West

- 9.3 The illustration attached to these SIs is not a rule of the SIs and is offered only as supplementary material.

10 THE START

- 10.1 The starting line is between a staff with an orange flag on the RC vessel at one end and the course side of SD Channel Buoy 17 at the other end.
- 10.2 [DP] Boats whose warning signal has not been made shall avoid the starting area during the starting sequence for other classes. Otherwise, this may be seen as a breach of RRS 23.1.
- 10.3 As a courtesy, one minute prior to the first warning the RC will sound 4 horn blasts. It is the intention of the RC that classes start **6 to 10 minutes apart**, or more, dependent upon the prevailing conditions.

11 RECALLS

- 11.1 If any part of a boat's hull is on the course side of the starting line at her starting signal and she is identified, the RC will hail her sail number as soon as possible over a loud hailer and/or on VHF 68. It is the responsibility of each boat to start properly.
- 11.2 Failure to hail her number, failure of her to hear such a hail, or the order in which boats are hailed will not be grounds for a request for redress. This changes RRS 62.1(a).
- 11.3 A RC assist vessel may be stationed near the Pin Buoy end of the starting line and is also authorized to identify and hail premature starters.
- 11.4 Your attention is directed to NoR 1.3 regarding the use of a World Sailing Test Rule and its effect on OCS boats.

12 WITHDRAWAL

- 12.1 [DP] A boat that retires from a race shall email the Scorer at RCChair@southwesternyc.org as soon as reasonably possible. Failure to do this may result in entry rejection for other SWYC races. This is a safety requirement, so we do not wake up your emergency contacts, or send the US Coast Guard out to look for you!

13 THE FINISH

- 13.1 The finish line will be between SD Channel Buoys #5 & #6.
- 13.2 [DP] There will be no RC Boat on station at the finish. The skipper shall take the time when the boat crosses the above-described finish line (GPS Time) and send an e-mail report to RCChair@southwesternyc.org. Skippers will keep photographic evidence or screen shots of position and time at finish and provide to the race committee if requested.
- 13.3 Report in your email: *Please ensure your boat name is in the subject line of the email!*
Sail #: _____, **Boat Name:** _____, **Class:** _____,
Finish Time (GPS): hr: _____ min: _____ sec: _____,
Your name and telephone number _____,
The sail number and the time ahead of and behind the nearest finishing boat(s) _____.
- 13.4 Finishing information must be reported within 90 minutes of a boat's finish. Failure to comply with this SI may result in a score of DNF. This modifies Appendix A5.

14 PENALTY SYSTEM

- 14.1 The penalty for OCS is described in NoR 1.3.
- 14.2 For all other penalties, RRS 44.1 will apply without modification.

15 TIME LIMIT

- 15.1 There is no time limit for Cabrillo II.

16 HEARING REQUESTS

- 16.1 Protesting boats shall file their written protest by emailing the Protest Chair at protests@southwesternyc.org no later than 1100 hours on Sunday, January 28.
- 16.4 Notice of protests and boats involved and the schedule of hearings, will be posted on the [Event Website](#) by 1700 hours the Monday following the race. The protest committee will attempt to notify competitors by text message and/or email. Failure to post the notices on the regatta website or send the text message or email notification shall not be grounds for redress or reopening. This changes rule 62.1(a).
- 16.5 Protests will be heard as soon as practicable, which will be at a later date and possibly involve Zoom.

17 SCORING

- 17.1 This race will be scored as provided in the Notice of Race.

18 SAFETY REGULATIONS

- 18.1 Notwithstanding any safety requirements, the ultimate safety of a boat and her crew is the sole and inescapable responsibility of the owner or charterer. He/she must do his/her best to ensure that the boat is fully sound, thoroughly seaworthy and manned by an experienced crew who are physically fit to face bad weather. He/she must be satisfied as to the soundness of hull, spars, rigging, sails, and all gear. He/she must ensure that all safety equipment is properly maintained and stowed, and that crewmembers know where it is stowed and how it is used.

19 RESULTS AND PRIZES

- 19.1 Race results will be published on the [Event Website](#).
19.2 Trophies for each class will be awarded at SWYC after Cabrillo IV on March 23, 2024.
19.3 The SWYC membership invites all racers to enjoy the hospitality of the SWYC clubhouse.

20 DISCLAIMER OF LIABILITY

- 20.1 Sailing is an activity that has an inherent risk of damage and injury. Competitors in this event participate entirely at their own risk. See RRS 3, Decision to Race. The race organizers (SWYC, race committee, protest committee, host club, sponsors, or any other organization or official) will not be responsible for damage to any boat or other property or the injury to any competitor, including death, sustained as a result of participation in this event. As a condition of their participation in this regatta, competitors release all claims they may have against SWYC and its officers, directors, members, committees, and employees for damage to property, personal injury or death sustained in conjunction with or prior to, during or after the regatta. Competitors shall be responsible for damage or injury caused by their breach of The Racing Rules of Sailing or applicable governmental rules for the avoidance of collision.

21 FURTHER INFORMATION

- 21.1 SWYC RC Chair: Ian Trotter ian@chulavistaphoto.com

Sugarloaf Rock



32°13'21.3"N 116°57'48.0"W

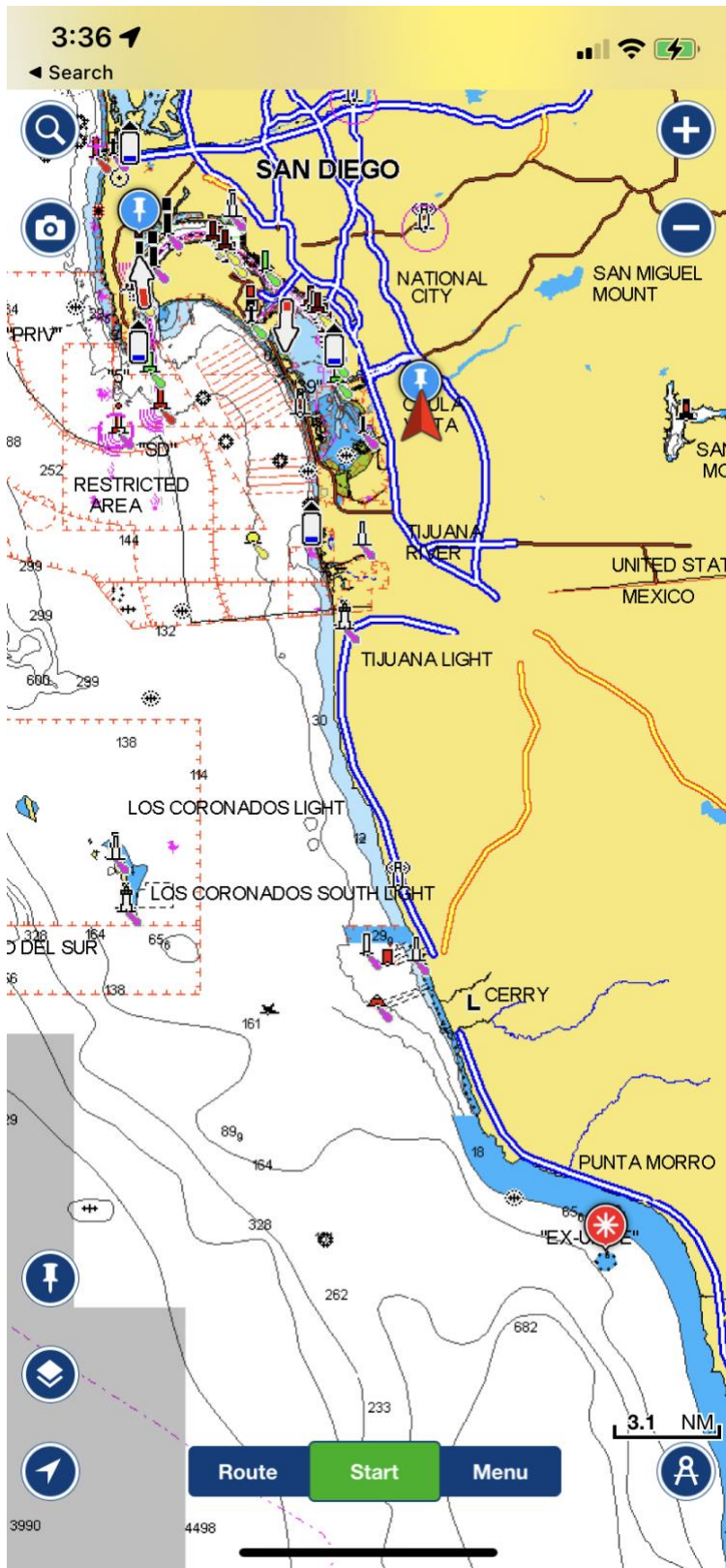


Illustration is not a rule of the SIs and is offered only as supplementary material.
Illustration is not for navigation purposes.