



SAILING INSTRUCTIONS - RANDOM LEG CLASS – AMENDMENT 1

SCYA 94th Midwinter Regatta

Saturday and Sunday, February 24 and 25, 2024

Organizing Authorities: Southern California Yachting Association and
Channel Islands Yacht Club, 4100 Harbor Blvd, Oxnard, CA 93035 (805) 985-2492

- 1. RULES** - The Regatta will be governed by the rules as defined in *The Racing Rules of Sailing (RRS)*. Written changes to the Sailing Instructions will be posted online by 0930 on the day of the event at <https://www.regattanetwork.com/event/27248>.

On the water, changes to a sailing instruction may only be made by hailing all competitors on VHF Channel 68 and/or displaying Signal Flag L, informing them of the change, and receiving confirmation from each competitor that they have heard and understood the change.

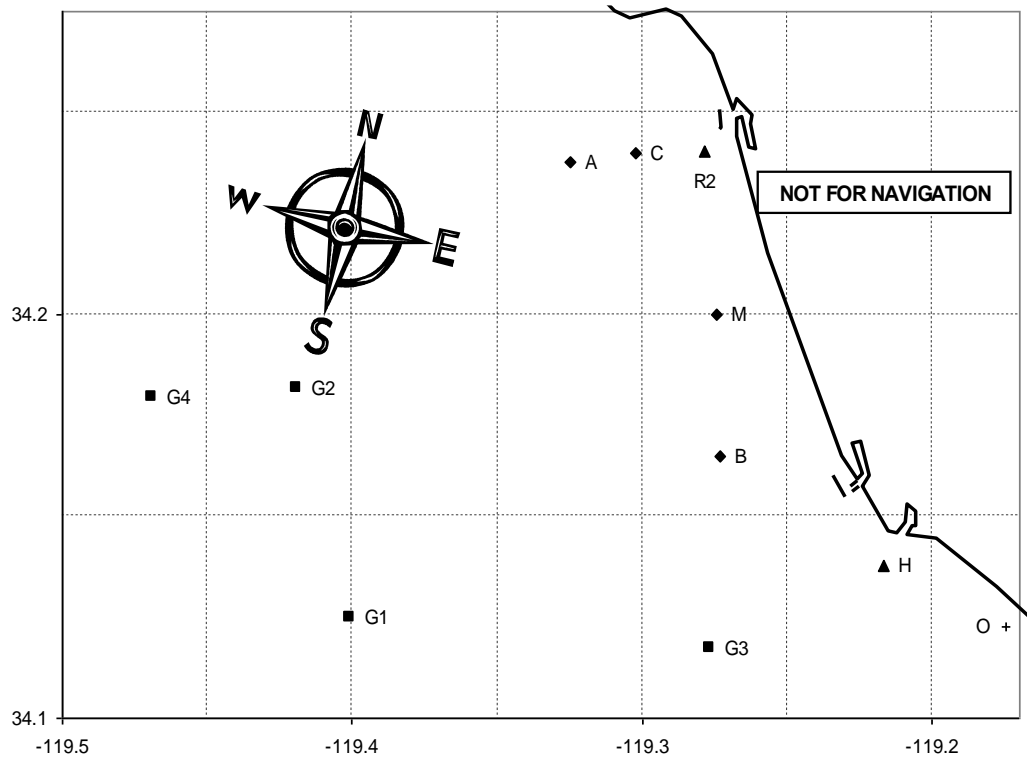
- 2. RACEQs:** *Prior* to leaving the berth, at least one crew member on each boat is encouraged to download the “RaceQs” application to a smart phone or tablet, open a free account, and add the boat name to the account. **Only one device per boat** should be actively tracking during the race and kept in a safe, stable location on the boat. The app allows one to “Preset” when to start tracking or to select “Start Tracking” during the starting sequence. Soon after the start verify that the app is tracking and not “Live Streaming” (unless connected to a power source). After crossing the finish line, select “Stop Tracking,” then “Save & Upload” the boat’s track. For more information check out the RaceQs website: <https://raceqs.com>. We’ll attempt to combine and share the tracks after racing.
- 3. SCHEDULE OF RACES** – Each day the **first start** for the **Random Leg Class** is planned for **1100**. On Saturday, the Random Leg Class will start approximately 30min prior to the first start for the Windward/Leeward Class in the same area. On Sunday, the Windward-Leeward Class will start at **1100**, before or concurrently with the Random Leg Class. Up to 2 Random Leg Races are planned for the 2-day regatta. At least 1 race is required for the Random Leg Class to complete the regatta.
- 4. CLASS FLAGS** - The following Class Flags may be employed depending on the type and number of entries in the Random Leg Class:
 - Pennant #1 – PHRF Spinnaker
 - Pennant #2 – Non Spinnaker
- 5. RACING AREA, COURSES, AND MARKS** - The racing area will be the coastal waters of Ventura County, and the courses will be chosen from the CIYC 2024 Random Leg Course Chart, which includes course distances between approximately 4 and 20nm. When an oil platform is a mark of the course, its associated mooring buoys are also marks of the course.
- 6. THE START** - Races will be started according to *Rule 26*. The port end of the starting line is the Mandalay spar buoy and the starboard end is an **orange flag** on the Race Committee (RC) boat. Boats whose warning signal has not been made shall avoid the starting area. The RC *may* attempt to hail a boat if it is On Course Side (OCS) at its starting signal but is not required to do so. Any

boat that suspects it is OCS should exonerate itself without waiting for a recall flag or to be hailed.

7. **THE FINISH** - The finish line will be the reverse of the start line, ie, the Mandalay spar buoy defines the starboard end, and the **orange flag** near the stern of the RC boat defines the port end. If the RC is not present, each finishing boat will approach within 3 boat-lengths shoreside of the Mandalay buoy. The crew will record her finish time at the moment when her bow is within 3 boat-lengths of the Mandalay Race Buoy and crosses an imaginary line between the Buoy and the Stack (34°12.39'N 119°15.08'W) of the Mandalay Power Plant at a bearing of 72°T (59°M). A crew member will relay the boat's finish time to the PRO as soon as practical after finishing.
8. **SCORING** –Area A random leg ratings will be used for PHRF class scoring. One design racers will be ranked in their order of finish. Each boat's series score will be the sum of her scores for both races with no throw-outs or exclusions. This modifies *RRS A2.1*.
9. **RADIO COMMUNICATIONS** - All boats shall carry a radio capable of transmitting and receiving on VHF Channels 16 and 68 and shall check in with the RC at the beginning of each race day by VHF or by sailing past the stern of the RC. A boat that retires from a race shall notify the RC as soon as possible by VHF or phone (PRO 415.518.4046).
10. **SAFETY EQUIPMENT** -- Each skipper is responsible for compliance with applicable US Sailing Safety Equipment Requirements for Nearshore
11. **HOSPITALITY AND AWARDS** – Skippers and Crew are invited to CIYC after racing each day for hot food and no-host bar with specialty drinks, race results, and, hopefully, viewing the day's combined tacks on RaceQs. Complimentary dinner will be provided prior to the Race Awards presentation at approximately **1700, Sunday, February 25**.

2024 Channel Islands Yacht Club – Random Leg Course Chart
Mandalay Race Buoy Start and Finish

Course #	Distance (nm)	Waypoints (see Codes below)	Approx Bearing to 1 st Mark
1	9.34	Sm Hp Fm	143°T (130°M)
2	10.03	Sm Hs Bs Fm	143°T (130°M)
3	12.80	Sm Hs G3s Fm	143°T (130°M)
4	13.95	Sm Hs R2s Fm	143°T (130°M)
5	16.70	Sm Hs As Fm	143°T (130°M)
6	4.20	Sm Bp Fm	180°T (167°M)
7	9.90	Sm G3p Fm	181°T (168°M)
8	10.03	Sm Bp Hp Fm	180°T (167°M)
9	11.15	Sm Bs As Fm	180°T (167°M)
10	12.80	Sm G3p Hp Fm	181°T (168°M)
11	15.20	Sm G3s Cs Fm	181°T (168°M)
12	18.74	Sm G3s G1s Fm	181°T (168°M)
13	15.33	Sm G1p Fm	234°T (221°M)
14	18.74	Sm G1p G3p Fm	234°T (221°M)
15	14.40	Sm G2p Fm	261°T (248°M)
16	16.48	Sm G2p Bp Fm	261°T (248°M)
17	16.57	Sm G2s As Fm	261°T (248°M)
18	19.45	Sm G4p Fm	263°T (250°M)
19	7.40	Sm As Fm	313°T (300°M)
20	8.66	Sm As R2s Fm	313°T (300°M)
21	11.15	Sm Ap Bp Fm	313°T (300°M)
22	16.55	Sm Ap G3p Fm	313°T (300°M)
23	5.56	Sm Cp Fm	330°T (317°M)
24	9.60	Sm Cp Bp Fm	330°T (317°M)
25	6.41	Sm R2Vp Cp Fm	355°T (342°M)
26	8.66	Sm R2Vp Ap Fm	355°T (342°M)
27	14.76	Sm R2Vp G3p Fm	355°T (342°M)



Code	Marks	Approximate Location
A	Fish Sticks spar buoy	34° 14.5' N 119° 19.8' W
B	Wes Mark spar buoy	34° 09.9' N 119° 16.4' W
C	Chips spar buoy	34° 14.4' N 119° 18.2' W
H	Hueneme buoy	34° 08.3' N 119° 13.0' W
Sm/Fm	Mandalay spar buoy	34° 12.0' N 119° 16.5' W
R2	Ventura R2 whistle buoy	34° 14.4' N 119° 16.7' W
G1	Platform Gail	34° 07.5' N 119° 24.0' W
G2	Platform Gilda	34° 10.9' N 119° 25.1' W
G3	Platform Gina	34° 07.0' N 119° 16.6' W
G4	Platform Grace	34° 10.8' N 119° 28.2' W