

Kamikaze Low Water Course Addendum

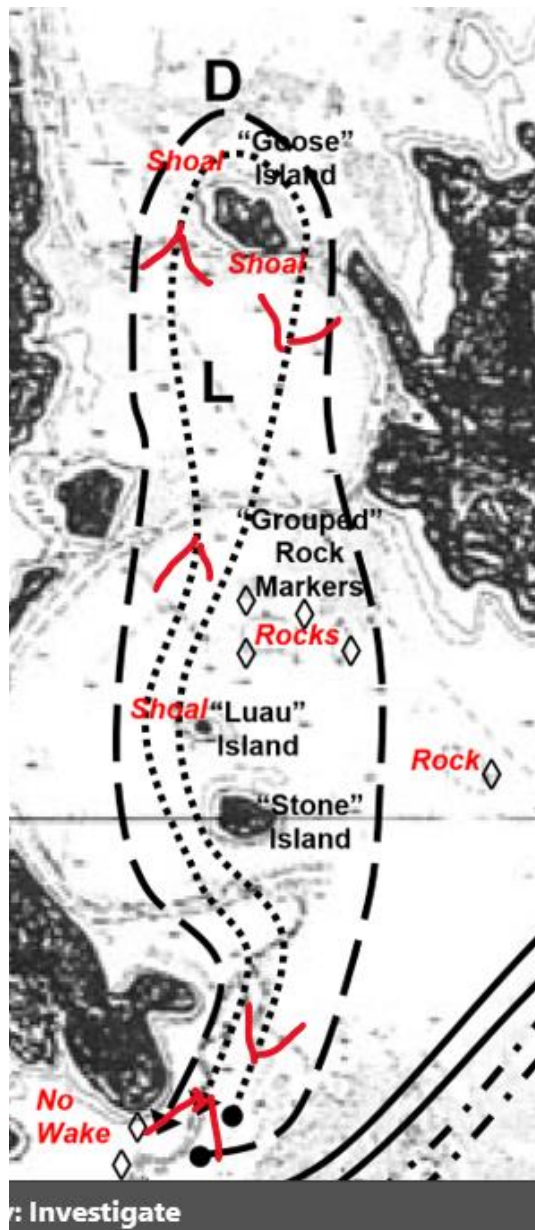
Course L1 ("Low Water Dam" Course) --

Sail from the starting line (or optional windward mark) toward "Stone" Island (between Elm Hill and Hamilton Creek) leaving it, "Luau" Island and the "Grouped" Rock Markers (northeast of "Luau" Island) to STARBOARD. Sail toward the dam rounding "Goose" Island to **Starboard**. Sail back toward "Luau" Island leaving the "Grouped" Rock Markers, "Luau" Island and "Stone" Island to PORT. Continue by sailing back to finishing line.

Course L2 ("Low Water Dam" Course) --

Sail from the starting line (or optional windward mark) toward "Stone" Island (between Elm Hill and Hamilton Creek) leaving it, "Luau" Island and the "Grouped" Rock Markers (northeast of "Luau" Island) to STARBOARD. Sail toward the dam rounding "Goose" Island to **Port**. Sail back toward "Luau" Island leaving the "Grouped" Rock Markers, "Luau" Island and "Stone" Island to PORT. Continue by sailing back to finishing line.

L1



L2

