

The definitive site for Sarasota Bay PHRF racing mark information: <https://sarabayracing.com/>

Thank you, Mike Halliday!

Course

Reset
Copy Course Link

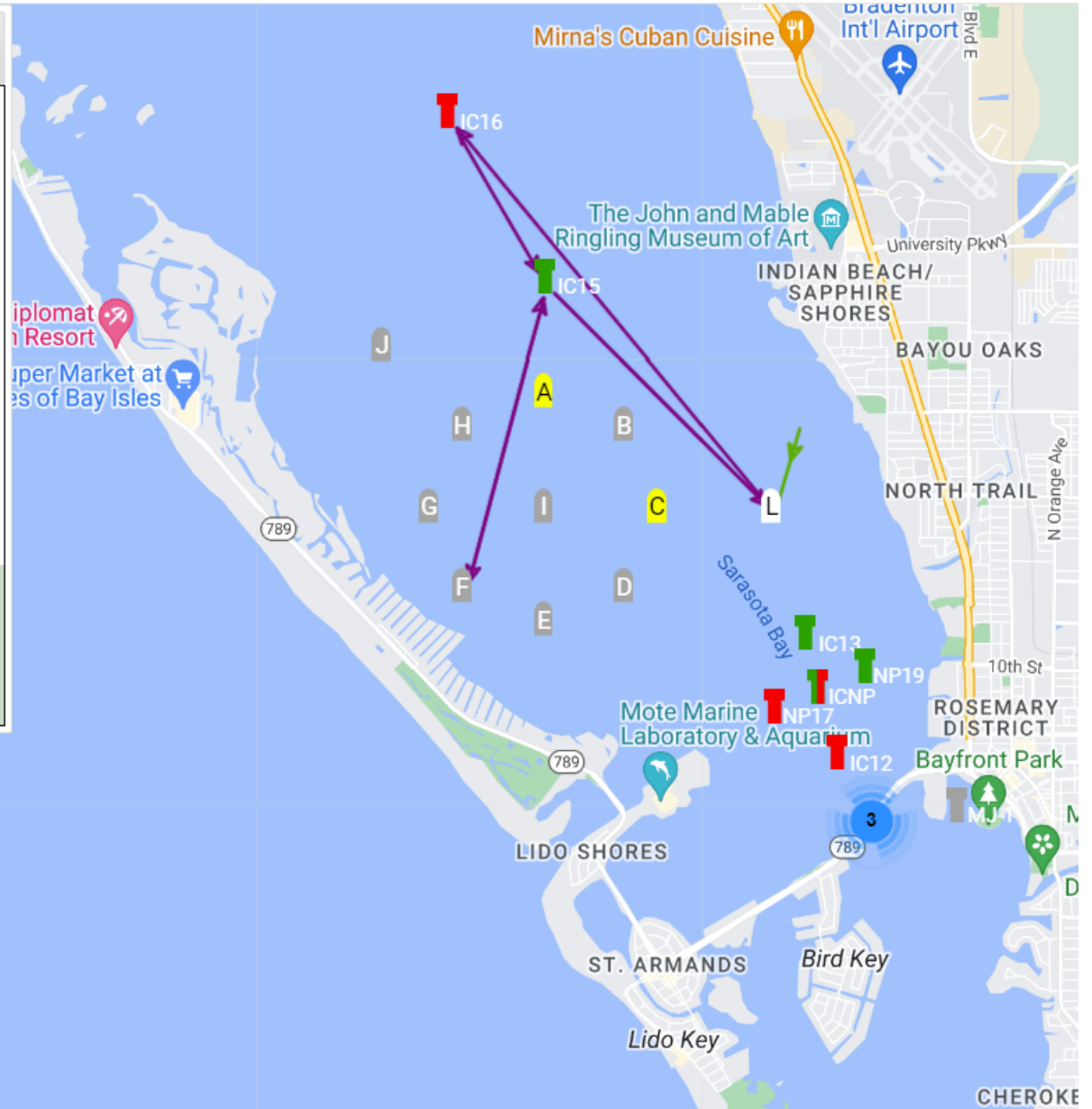
Click marks on map to build a course.
 Drag marks out of course table to remove them. [More...](#)

L	Start
IC16 _s	2.69
IC15 _s	1.02
F	1.68
IC15 _s	1.68
L	1.70

wind 017° at 10.1 g 11.6 kts Tmrw at 1:00PM Set Wind

Distance: 8.77 nm
 Duration: 01:45--02:25 , 01:15--01:53

Wind Forecast by [RapidAPIforOpenWeatherMap](#)
 Course Builder v5.19 by Mike Halliday



Headings

- L to 16p 326*
- 16p to 15s 156*
- 15s to Fs 201*
- Fs to 15s 021*
- 15s to L 141*