



# 2024.2 Wednesday Night Races

## *Sailing Instructions*

### *Galveston Bay Cruising Association*

1500 Marina Bay Dr. Suite 1592, Building #113, Clear Lake Shores, TX 77565

#### **Amendments**

**2024.1 Add One Design Course 3/28/2024**

**2024.2 Fix Short Course Diagram 4/2/2024**

#### **I. Introduction and Rules**

Wednesday Night Races are held on Clear Lake and consist of five series comprised of four races per series. Each series is followed by an “off-week” for awards. The intent of the Wednesday Night Races is fun, informal racing. Entry fees are nominal (compared to full regattas) and the operation is intended to be minimally staffed. Galveston Bay Cruising Association is the organizing authority of the series. The races are governed by the Racing Rules of Sailing 2021-2024, with the following exceptions:

- Start sequence is determined by the start board, but starts will be dictated by sound, not physical flag. This changes RRS Rule 26.
- The first two sentences of rule 44.1 are changed to: ‘A boat may take a One-Turn Penalty when she may have broken a rule of Part 2 or rule 31 while racing.’ Racers are reminded of the obligation to keep clear of other boats while doing so, and RRS 44.1 b “if the boat caused

injury or serious damage or, despite taking a penalty, gained a significant advantage in the race or series by her breach her penalty shall be to retire.”

## II. Registration and Fees

Series registration and notice board - <https://www.regattanetwork.com/event/27562> All updates to the Sailing Instructions and schedule shall be announced at the notice board.

- Active GBCA Senior Members: The entry fee is \$150 for the full season of racing for all classes.
- Non-GBCA Senior Members: The entry fee is \$250 for the full season for all classes.
- The entry fee is \$60 for a single series for all classes.
- Single Race: The entry fee is \$25 for a single race for all classes

## III. Communication with Competitors

Notices to competitors will be posted on the official notice board located at the WNR Forum located on the Regatta Network site:

[http://www.regattanetwork.com/clubmgmt/applet\\_notice\\_board.php?regatta\\_id=27562](http://www.regattanetwork.com/clubmgmt/applet_notice_board.php?regatta_id=27562)

Any changes to these sailing instructions will be made no later than 12:00 Noon on the day of scheduled racing. An attempt to give notice of changes **may** be made by email and/or text message to the information registered on Regatta Network. Failure to receive such notice shall not be grounds for protest or request for redress. This changes RRS 60.1.

Discussion regarding courses and race format can be made in our forums -

<http://discussion2.gbca.org/index.php/board.6.0.html>

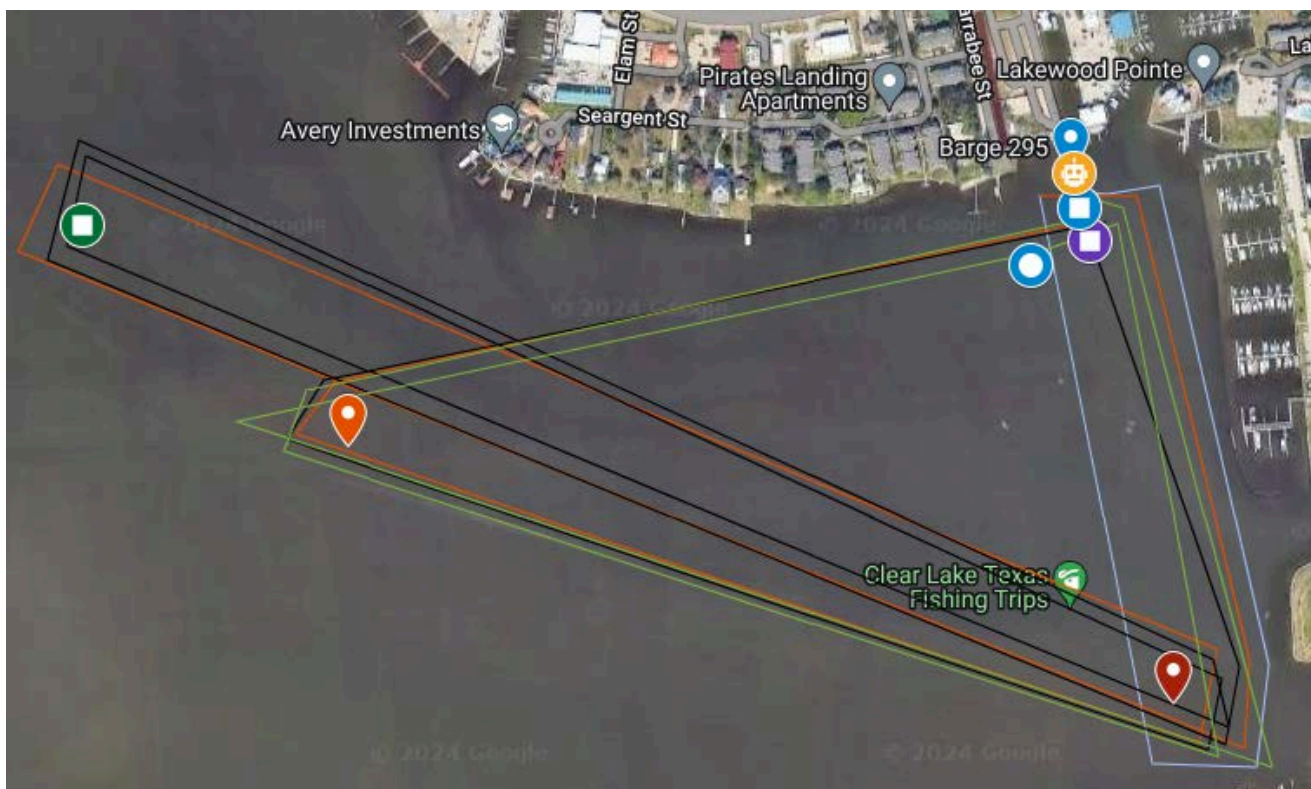
## IV. Schedule

The scheduled season is made up of 5 series of 4 nights of racing with a bye week after each series. One race may constitute a series. Canceled races may not be rescheduled. Cancellation may apply to only some classes. Cancellation may be for safety reasons, low water, non-competitive conditions, equipment failures, or any other reason or no reason, at the sole discretion of the Race Committee.



- Wednesday, March 20th 19:00 hours Skippers Meeting/Kick-off party at BARge
- Wednesday, April 3rd 18:15 hours Series 1, Race 1, first warning signal.
- Wednesday, May 1st 19:00 hours Bye-week, no racing. Series awards at BARge.
- Wednesday, May 8th 18:15 hours Series 2, Race 1, first warning signal.
- Wednesday, June 5th 19:00 hours Bye-week, no racing. Series awards at BARge.
- Wednesday, June 12th 18:15 hours Series 3, Race 1, first warning signal.
- Wednesday, July 10th 19:00 hours Bye-week, no racing. Series awards at BARge.
- Wednesday, July 17th 18:15 hours Series 4, Race 1, first warning signal.
- Wednesday, August 14th 19:00 hours Bye-week, no racing. Series awards at BARge.






- Wednesday, August 21th 18:15 hours Series 5, Race 1, first warning signal.
- Wednesday, September 25th 19:00 hours End of Season awards at BARge.

## V. Marks of the Course



<https://www.google.com/maps/d/u/0/edit?mid=1X4WaStfxbQ3zIN9L3ekqPDXfyOW4DbM&usp=sharing>

-  Marquee/Finish Flags. Mounted on the patio of BARge 295 approximately at:
  - **Near 29.55822, -95.03407**
  - 2613 ½ E NASA Pkwy, Seabrook, TX 77586
-  "Floating Mark F", a GBCA floating mark. This is used for both starting and finishing. It shall be kept to starboard at the start and kept to port at the finish
  - **N 29.55766, W 95.03397**
  - 500' South of Barge295.

-  "Floating Mark S," a GBCA floating mark. This is the starting pin and should be kept to port at the start.
  - **N 29.55731, W 95.03385**
  - 700' South of Barge295
-  "Floating Mark J22," a one design floating mark. This is the starting mark for the One Design course, and it should be kept to starboard for that course at the start.
  - Generally, it will be WSW of the Floating Mark S during predominate SSE wind. It will be square to the wind.
  - This will be dropped before the race start and retrieved at the end of the race day.
  - Two foot wide, blue floating mark, but it could be replaced with orange or white.
-  "Kemah Channel Buoy #16," a fixed mark on the North of the Kemah Channel
  - **N 29.5551, W 95.043**
  - 0.275 miles South of Sam's Boat
-  "Floating Mark L," a floating GBCA mark. It is located near:
  - **N 29.55748, W 95.04629**
  - 100' East of "The Oyster Shoals"
-  "Clear Creek Channel Buoy #14," the red nun near the Kemah cut located
  - **N 29.55232, W 95.03262**
  - 0.1 miles West of Kemah Channel Entrance

**NOTE - if a fixed mark is missing, the race committee will attempt to replace it with a temporary floating mark before the start of the first race, otherwise racing is canceled for the day.**

## VI. Start / Finish Line

The Start line will be between two fixed floating marks "S" and "F". In addition, there will be a display for the start sequence and countdown attached to Barge295 (see Markee below).



"Markee"

There will not be a race committee to monitor the start line. It is up to competitors to protest any On Course Side (over early) infractions.

The finish line shall be between F and the GBCA flag at Barge295.

## VII. Course Description

The course can be found here:

<https://www.google.com/maps/d/edit?mid=1X4WaStfxbQ3zIN9L3ekqPDXfyOW4DbM&usp=sharing>





Marker F



Marker S



Marker L

**Long Course (L):** Starting near Barge295 between “S” and “F”. After the start, pass Kemah Channel Buoy #16 to your port. Pass Clear Creek Channel Buoy #14 (red nun) to your port. Head down to Floating Mark L and leave on your port as you round and head back up to Clear Creek Channel Buoy #14. If there are multiple laps, continue back to Mark L for the additional laps. Once all laps around L have been completed, head to Barge295 where you will cross between “F” and a finishing flag on the upper deck of Barge295. One lap course length is 3.89 miles, two laps is 5.81 miles.

- Start line
- Kemah Channel Buoy #16 (keep to port)
- Clear Creek Channel Buoy #14 (keep to port)
- Floating Mark L (keep to port)
- Clear Creek Channel Buoy #14 (keep to port)
- Second lap
  - Floating Mark L (keep to port)
  - Clear Creek Channel Buoy #14 (keep to port)
- Finish between “F” (keep to port) and finishing flag on Barge295 (keep to starboard).

**Short Course (S):** Starting near Barge295 between “S” and “F”. After the start, pass Kemah Channel Buoy #16 to your port. Pass Clear Creek Channel Buoy #14 (red nun) to your port. ~~Head up to mark “S”. Head back down to Clear Creek Channel Buoy #14.~~ This is one lap. For each additional lap, head up to mark “S”, ~~Kemah Channel Buoy #16~~, and then back to Clear Creek Channel Buoy “14”. To finish, head to Barge295 where you will cross between “F” and a finishing flag on the upper deck of Barge295. One lap - 1.85 mile, two lap - 3.7 miles, three lap - 5.55 miles, etc

- Start line
- Kemah Channel Buoy #16 (keep to port)
- Clear Creek Channel Buoy #14 (keep to port)
- Additional laps
  - Starting Mark “S” (keep to port)
  - ~~Kemah Channel Buoy #16 (keep to port)~~

- Clear Creek Channel Buoy #14 (keep to port)
- Finish between "F" (keep to port) and finishing flag on Barge295 (keep to starboard).

**One Design Course (J):** Starting near Barge295 between "j22" and "S". After the start, head to Clear Creek Channel Buoy #14 (red nun) to your port. Head back to mark "S". This is one lap. To finish, head to Barge295 where you will cross between "F" and a finishing flag on the upper deck of Barge295. One lap - .7 mile, two lap - 1.4 miles, three lap - 2.1 miles, etc

- Start line
- Clear Creek Channel Buoy #14 (keep to port)
- Additional laps
  - Starting Mark "S" (keep to port)
  - Clear Creek Channel Buoy #14 (keep to port)
- Note that the last leg is the finish. For example, for "J3" you will only pass #14 three times. On the last pass, you shall finish between "F" and finishing flag.

### VIII. Classes and Handicaps

The Classes are defined as follows:

- Handicap keelboats
  - JAM - Jib And Main. Non-Spin including Catalina 22s (GREEN)
  - SPIN - Spinnaker Keelboats (RED)
- Handicap boardboats and/or multihulls (traditionally called Portsmouth)
  - PORT - Portsmouth Dinghy, Board boats, and Multihulls (BLUE)
- One design keelboat classes, ie nominally identical boats conforming to a set of class rules
  - J-22 (PURPLE)
- New classes, as Multihull Distance, RS21 (one design), or other classes that meet criteria (Minimum four boats racing for a full series and has a class captain).



## IX. Starting

Each class will have a class color, which will be displayed during the sequence countdown. The sequence countdown will consist of the order number, class, and course.

Nominally, a race sequence begins at 6:15. If a race sequence has not begun by 6:30, the races are canceled for the day. For course description see below.

An example sequence would be :

- **1 PORT S2** (Short course, 2 laps)
  - 6:15:00 - Class flag
  - 6:16:00 - Class and Prep flag
  - 6:17:00 - Class flag
  - 6:18:00 - Start
- **1 JAM L1** (Long course 1 laps)
  - 6:18:00 - Class flag
  - 6:19:00 - Class and Prep flag
  - 6:20:00 - Class flag
  - 6:21:00 - Start
- **3 SPIN L2** (Long course 2 laps)
  - 6:21:00 - Class flag
  - 6:22:00 - Class and Prep flag
  - 6:23:00 - Class flag
  - 6:24:00 - Start
- **4 J-22 J6** (One Design course 6 laps)
  - 6:24:00 - Class flag
  - 6:25:00 - Class and Prep flag
  - 6:26:00 - Class flag
  - 6:27:00 - Start

Markus indicates changes of sequence based on class color. Horn blasts indicate the following:

- Long blast - change of class/start, at the minute interval
- Three short - thirty seconds to start
- Two short - twenty seconds to start
- Five short - countdown to start

Prior to sequences, Markus will countdown time in GREEN. During a sequence, the countdown is RED.

Markus shall provide the sequence order at the start of each minute during prestart, and once during each start countdown.

## IX. Insurance and Assumption of Risk

Each participating boat shall be insured with valid third-party liability insurance with a minimum

cover of \$300,000 per incident or the equivalent.

Competitors participate in the regatta entirely at their own risk. See RRS 3, Decision to Race. The organizing authority, volunteers, or sponsors will not accept any liability for material damage or personal injury or death sustained in conjunction with or prior to, during, or after the regatta.

## **X. Protests**

The spirit of WNR is fun racing amongst friends, and as such protests are discouraged. To file a protest, submit a properly completed form to PRO at [darin@keever.cc](mailto:darin@keever.cc) within 24 hours of completion of the race being protested. Forms can be found at <https://www.ussailing.org/resource-library/us-sailing-hearing-request-form/> . Competitors are also encouraged to use the electronic submission tool included in the US Sailing App.

## **X1. Time Limit**

All competitors must finish before sunset. Any boat on the course after sunset will be marked DNF. Sunset is defined by NOAA. Sunset can be found at wunderground - <https://www.wunderground.com/weather/us/tx/kemah>

## **XII. Scoring**

One race is required to be completed to constitute a series. A boat's regatta score is the total of her race scores without exclusion.

PHRF classes will be scored using Time on Time with the following conversion formula:

$TCF=650/(550+x)$ , where x equals PHRF Handicap.

Portsmouth class competitors will be scored using the applicable rating from the US Sailing Portsmouth Yardstick database. An appropriate Beaufort Scale (BN) number will be applied by the Race Committee based on the observed conditions the night of an applicable race.

## **XIII. Series Awards and Social**

Series awards will be presented during the bye-week party at BARge 295. An award will be presented to the 1st place competitor in each class per series. Additional awards may be given at the discretion of the race committee.

## **XIV. Annual Awards**

Awards for the season will be given to the first and second highest scoring competitor in each class based on points per race. Only competitors registered for the entire season will be eligible for an annual award. A more detailed description of annual awards will be announced at a later date.

### **Questions:**

**Regatta Chair:** Darin Keever at [darin@keever.cc](mailto:darin@keever.cc) or

**Fleet Captain:** GBCA Fleet Captain James Wroten at [james@wrogo.com](mailto:james@wrogo.com)