

AROUND EGMONT KEY CLASSIC REGATTA
BRADENTON YACHT CLUB
PALMETTO FLORIDA
SATURDAY FEBRUARY 24, 2024
REVERSE HANDICAP EVENT

SAILING INSTRUCTIONS

1. RULES:

- 1.1. The regatta will be governed by the rules as defined in *The Racing Rules of Sailing* (RRS).
- 1.2. The US Sailing Prescriptions to RRS 63.2 and RRS 63.4 will not apply.
- 1.3. The Race Committee may use RRS 90.2(c) to make changes to the SIs on the water.
- 1.4. The current WFPHRF class rules will apply. This is a WFPHRF category 4 event.
- 1.5. This is a Pursuit Start event.
- 1.6. If there is a conflict between the Notice of Race, Sailing Instructions, RRS or WFPHRF, the Sailing Instructions shall take precedence. This changes RRS 63.7.

2. NOTICES TO COMPETITORS:

Notices to competitors shall be posted on Regatta Network at <https://www.regattanetwork.com>. As a courtesy they may be posted by the pool.

3. CHANGES TO SAILING INSTRUCTIONS:

Any changes to the sailing instructions will be posted before 0800 on the day it will take effect, except that any change to the schedule of races will be posted by 2000 on the day before it will take effect.

4. SIGNALS MADE AHORE:

- 4.1. Signals made ashore will be displayed from the flagpole located at the southeast corner of the Yacht Basin at Bradenton Yacht Club.
- 4.2. When flag AP is displayed ashore, "1 minute" is replaced with "not less than 30 minutes" in the Race Signal AP. This changes Race Signal AP.

5. SCHEDULE OF RACES:

Warning Signal: Saturday, February 24, 2024 will be at 0955

Individual start times will be distributed before the end of the Competitor's Meeting, posted on the Official Notice Board and/or online. Should the race be abandoned for any reason, it may be rescheduled for the following day.

6. CLASS FLAGS:

A yellow flag will be used as a class flag for the starting sequence for the first boat.

7. RACING AREA:

The start shall be located in lower Tampa Bay in the vicinity of the Manatee River Marker #2 and will go around Egmont Key and return.

8. THE COURSES

8.1. Course A: The course will start between the Committee Signal Vessel and a temporary mark in the vicinity of R2 in Tampa Bay. The first leg shall be from the Committee Signal Vessel to G3 off of Egmont Key leaving it to port. Thence to Marker G1 bell leaving it to starboard, thence to R14 leaving it to starboard, thence to R16 leaving it to starboard, thence to R18 leaving it to starboard thence to G3, leaving it to port. Thence to the finish in the vicinity of R2.

8.2. Course B: The course will start between the Committee Signal Vessel and a temporary mark in the vicinity of Marker #2 in Tampa Bay. The first leg shall be from the Committee Signal Vessel to G3 off of Egmont Key, leaving it to starboard. Thence to R18 leaving it to port thence to R16 leaving it to port, thence to R14 leaving it to port, thence to G1 bell leaving it to port, thence to G3 bell, leaving it to starboard. Thence to the finish in the vicinity of R2.

8.3. Either course's rhumb line is approximately 21.2 nm in length.

9. MARKS:

9.1. The start and finish line mark will be an inflatable red mark.

9.2. The remaining marks will be fixed government marks.

10. COMMUNICATIONS

10.1. The race committee will monitor and make courtesy broadcasts on VHF channel 72.

10.2. Boats withdrawing from the race for any reason are requested to repeat their transmission if no acknowledgement has been received, 941.224.7991.

11. CHECK-IN PROCEDURES:

11.1. Before the start of the race, each boat shall check-in with the race committee by passing on the starboard side of the signal vessel or hailing on VHF channel 72 when within ½ nautical mile of the signal vessel.

11.2. All boats shall give their boat name, sail number, division and number of people aboard.

11.3. Only the race committee may protest boats for not checking in properly.

12. THE START:

12.1. Races will be started by the pursuit method. This changes RRS 26. The

warning signal shall be made 5 minutes before the starting signal of the slowest rated boat in the fleet. All boats must cross the starting line to start after her assigned starting time.

12.2. The starting line will be between a staff displaying an orange flag on the committee signal vessel at the starboard end and the course side of the port-end starting mark.

12.3. Boats whose starting time is not within the next 5 minutes shall avoid the starting area during the start times for other racers.

12.4. Boats not crossing the start line within 20 minutes of their scheduled start time shall be scored DNS (registered boats + 1) without a hearing. This changes RRS 35, 63.1, A4.1 and A5.3.

13. THE FINISH:

13.1 The finishing line will be between a staff displaying a blue flag on the committee signal vessel and the nearby mark.

13.2 If the Race Committee is not present, note your finish time as you pass R2 from GPS time in accordance with the US Sailing prescription to RRS 34 and if possible the boat finishing before you and the boat behind you. You may call in your results to 941.224.7991.

14. TIME LIMITS:

11.1. Boats failing to finish within sixty (60) minutes after the first boat in its class that sails the course will be scored TLE (finishers + 1) without a hearing. This changes RRS 35, 63.1, A4.1 and A5.3.

14.2. Boats failing to finish prior to sunset on the day of the race will be scored DNF (finishers + 1) without a hearing. This changes RRS 35, 63.1, A4.1 and A5.3. The scheduled time of sunset will be announced at the Competitor's Meeting.

15. PROTESTS AND REQUESTS FOR REDRESS:

15.1. Protest forms will be available next to the Official Notice Board.

15.2. A boat intending to protest about an incident that occurs in the racing area or ask redress is requested to notify the race committee finish vessel of her intention at the finish line, including the sail number of the boat being protested.

15.3. The protest time limit is sixty (60) minutes after the finish committee vessel's docking time.

15.4. Scoring inquiries will be accepted for thirty (30) minutes following the posting of the scores on the official notice board.

15.5. The organizing authority may schedule protest hearings at any time following receipt of protests. Such information shall be posted on the notice board.

16. SCORING:

16.1. The Low Point System of Appendix A of RRS will apply.

16.2. In the case of a shortened race, it will be re-scored as PHRF time/distance based on elapsed time.

16.3. Results will be included in the SBYA Boat of the Year Series.

17. SAFETY REGULATIONS:

A boat that retires from the race shall follow SI 10.2.

18. PRIZES:

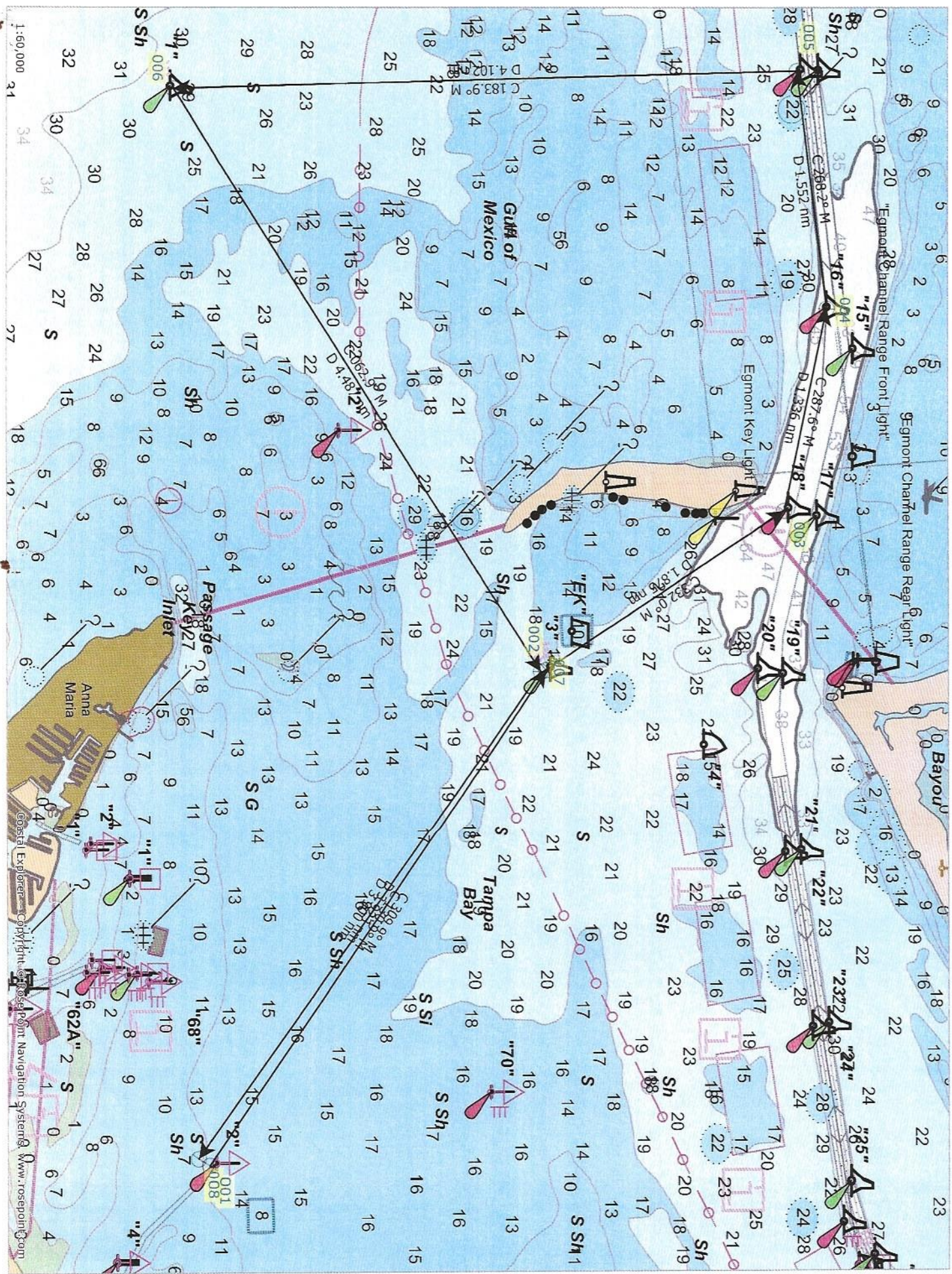
Prizes will be awarded at Bradenton Yacht Club following the protest time limit and any protest hearings that may be scheduled that day. If awards are not presented that day, Bradenton Yacht Club will use other means to get them to the recipients.

19. DISCLAIMER OF LIABILITY:

Competitors participate in the regatta entirely at their own risk. See RRS 4, Decision to Race. The organizing authority will not accept any liability for material damage or personal injury or death sustained in conjunction with or prior to, during, or after the regatta.

20. INSURANCE:

Each participating boat shall be insured with valid third-party liability insurance with a minimum cover of \$300,000 per incident or the equivalent.



Coastal Explorer - Copy Right - Rose Point Navigation Systems - www.rosepoint.com