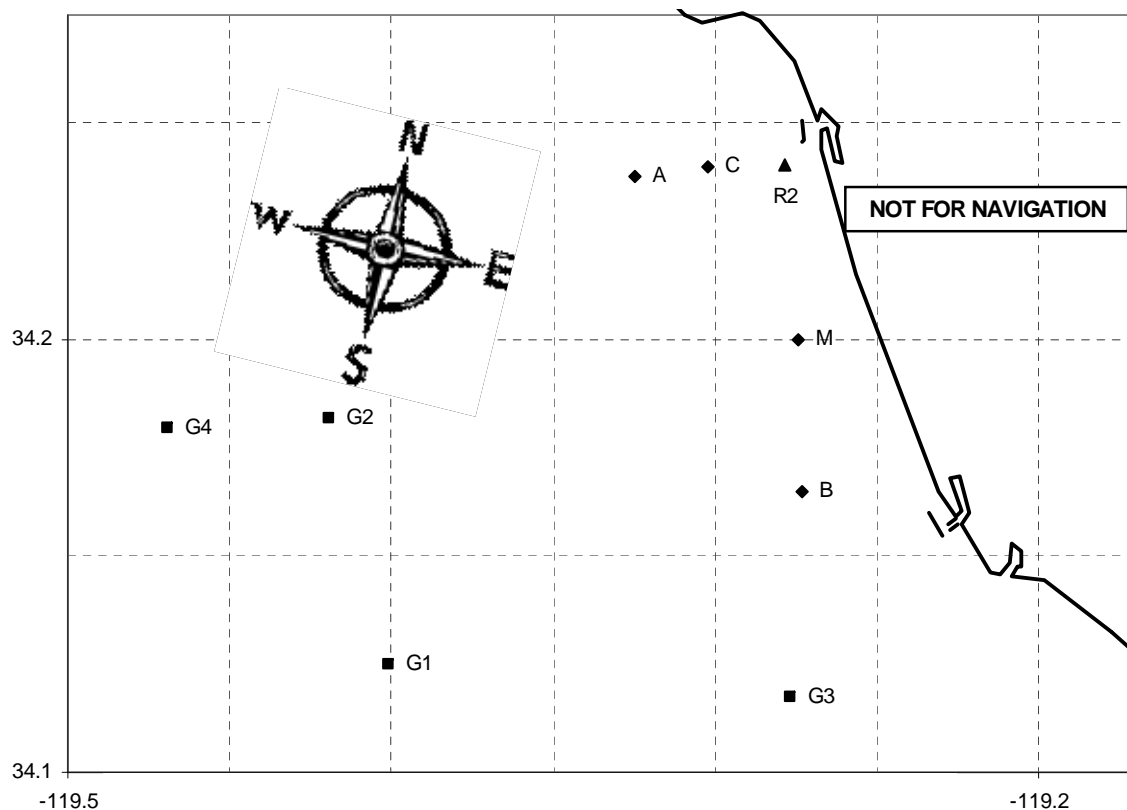


## 2024 PBYC SPRING SERIES COURSE CHART (Revised 2/19/24)

#	Course	Approx. Heading to 1st Mark, °M	Approx. Length
1	S Bs R2s F	158	9.0
2	S Bs As F	158	11.7
3	S Bs Cp Ap F	158	11.9
4	S Bs G2s F	158	17.1
5	S Bs G1s R2s F	158	19.3
6	S G3p F	165	10.0
7	S G3s R2s F	165	14.8
8	S G3s As F	165	16.6
9	S G3s R2p Ap F	165	18.7
10	S G3s G1s F	165	19.2
11	S G1s F	220	15.8
12	S G1s G2s F	220	19.0
13	S G1s R2p Ap F	220	23.1
14	S G2s F	250	15.0
15	S G2s R2s F	250	17.9
16	S As Cs Ap F	300	10.1
17	S As R2s F	300	8.7
18	S As Mp R2s F	300	12.2
19	S R2p Ap F	340	8.7
20	S R2p Bp F	340	9.0
21	S R2p G2p F	340	17.9
22	S Cs F	320	5.5
23	S Cp Ap F	320	8.0



### MARKS

A	Fish Sticks spar buoy	L: 34° 14.5' N	Lo: 119° 19.8' W
B	Wes spar buoy	L: 34° 9.9' N	Lo: 119° 16.4' W
C	Chips spar buoy	L: 34° 14.4' N	Lo: 119° 18.2' W
M	Mandalay spar buoy	L: 34° 12.0' N	Lo: 119° 16.5' W
R2	Whistle buoy R"2V"	L: 34° 14.4' N	Lo: 119° 16.7' W
G1	Platform Gail	L: 34° 7.5' N	Lo: 119° 24.0' W
G2	Platform Gilda	L: 34° 10.9' N	Lo: 119° 25.1' W
G3	Platform Gina	L: 34° 7.0' N	Lo: 119° 16.6' W
S	Start in vicinity of Mark M; see Sailing Instructions		
F	Finish in vicinity of Mark M; see Sailing Instructions		