



TAMPA YACHT & COUNTRY CLUB

TYCC Wednesday Night Portsmouth Series NOR

Each Wednesday from March 13th – October 23rd

1 RULES

- 1.1 The regatta will be governed by the rules as defined in *The Racing Rules of Sailing* and the *Portsmouth Yardstick*.

2 ELIGIBILITY AND ENTRY

- 2.1 The regatta is open to all centreboard classes and keel boats 19 feet and under that have registered. The entry fee is \$5.
- 2.2 Eligible boats may register online at <https://www.regattanetwork.com/event/27587>

3 SCHEDULE

- 3.1 Racing will be held Wednesdays during daylight saving time. Two races are scheduled each Wednesday. There will be a rest week after each series.

3.2	Spring A	Spring B
	March 13	April 24
	March 20	May 1
	March 27	May 8
	April 3	May 15
	April 10	May 22
	Fall A	Fall B

August 14	September 25
August 21	October 2
August 28	October 9
September 4	October 16
September 11	October 23

4 SAILING INSTRUCTIONS

The sailing instructions will be available online at www.tampayacht.com on the 9th of March.

5 SAILING AREA

5.1 Attachment A shows the location of the racing areas.

6 THE COURSES

The diagrams in Attachment B show the courses, including the approximate angles between legs, the order in which marks are to be passed, and the side on which each mark is to be left. The approximate course length will be 25 minutes.

7 SCORING

7.1 Each boat's finishing place shall be determined using the Portsmouth Yardstick

7.2 Boats without a RYA PY number will race using an Experimental PY number generated from their DPN. Adjustments to Experimental PY numbers will be made between series using the RYA PY online returns system.

7.3 The Series will use the low points scoring system.

7.4 1 race is required to be completed to constitute a series.

7.5 (a) When fewer than 7 races have been completed, a boat's series score will be the total of her race scores.

(b) When 7 or more races have been completed, a boat's series score will be the total of her race scores excluding worst score.

7.6 Competitors undertaking race committee duties may claim average points for 1 race per series.

8 PRIZES

Prizes shall be awarded at the discretion of the Race Committee.

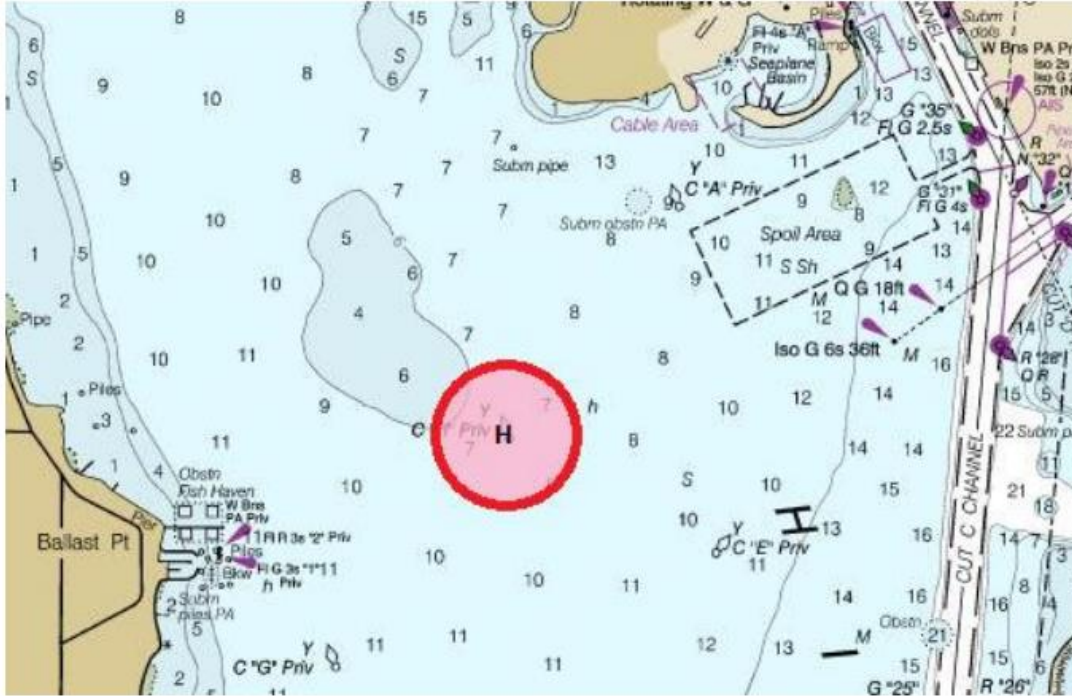
9 DISCLAIMER OF LIABILITY

Competitors participate in the regatta entirely at their own risk. See RRS 3, Decision to Race. The organizing authority will not accept any liability for material damage or personal injury or death sustained in conjunction with or prior to, during, or after the regatta. Participants will be required to sign a waiver to register.

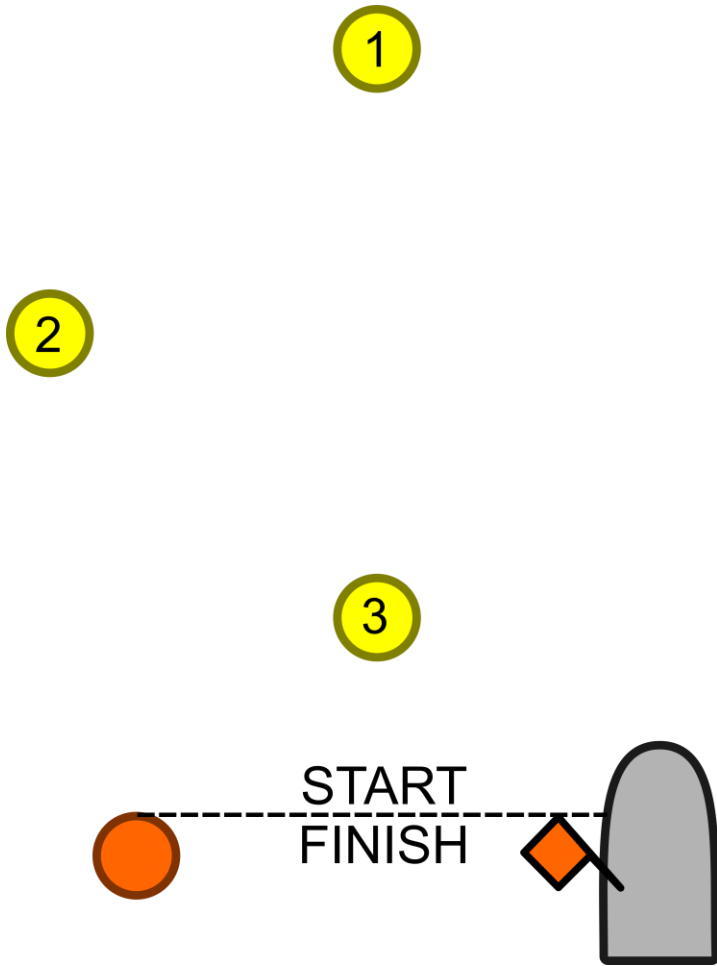
10 FURTHER INFORMATION

For further information please contact Kit Fortescue waterfront@tampayacht.com or visit tampayacht.com

A RACING AREA



B COURSE



All rounding marks to port.

W1: Start – 1 – Finish

W2: Start – 1 – 3 – 1 – Finish

TS: start – 1 – 2 – 3 – 1 – Finish