



# TAMPA YACHT & COUNTRY CLUB

## Wednesday Night Portsmouth Series

Tampa Yacht & Country Club

Wednesdays from March 13<sup>th</sup> – October 23<sup>rd</sup>, 2024

### SAILING INSTRUCTIONS

#### 1. RULES

The regatta will be governed by the rules as defined in *The Racing Rules of Sailing and the Portsmouth Yardstick*.

#### 2. NOTICES TO COMPETITORS

Notices to competitors will be posted on the official notice board located at the TYCC Sailing Office and online at <https://www.regattanetwork.com/event/27587>

#### 3. CHANGES TO SAILING INSTRUCTIONS

Any change to the sailing instructions will be posted before 0800 on the day it will take effect, any change to the schedule of races will be posted by 2000 on the day before it will take effect.

#### 4. SIGNALS MADE ASHORE

1. Signals made ashore will be displayed at the club flagpole and online at <https://www.regattanetwork.com/event/27587>
2. When flag AP is displayed ashore, '1 minute' is replaced with 'not less than 45 minutes' in the race signal AP.

#### 5. SCHEDULE OF RACES

1. Each race day a total of 2 races are planned, weather and daylight allowing.
2. Schedule:

Series	First signal	Last
Spring A	1815	1930
Spring B	1815	1930
Fall A	1815	1930
Fall B	1800	1915

#### 6. RACING AREA

Attachment A shows the location of the racing areas.

#### 7. THE COURSE

The diagrams in attachment B show the courses, including the approximate angles between legs, the order in which marks are to be passed, and the side on which each mark is to be left.

## 8. MARKS

1. The windward and leeward marks will be large yellow inflatables
2. The offset will be a large orange buoy
3. The port end start/finish mark will be H mark

## 9. THE START

1. Races will be started using RRS 26.
2. The starting line will be between a staff displaying an orange flag on the committee boat and the course side of the port-end starting mark.
3. A boat may not start more than 8 minutes after her starting signal.

## 10. THE FINISH

The finishing line will be between a staff displaying an orange flag on the committee boat and the course side of the port end finishing mark.

## 11. TIME LIMITS AND TARGET TIMES

1. The target time for races will be 25 minutes
2. Boats failing to finish within 15 minutes after the first boat sails the course and finishes will be scored in place.

## 12. PROTESTS AND REQUESTS FOR REDRESS

1. Protest forms are available at the sailing office. Protests and requests for redress or reopening shall be delivered to [waterfront@tampayacht.com](mailto:waterfront@tampayacht.com) within the appropriate time limit.
2. The protest time limit is 24 hours after the last boat has finished the last race of the day or the race committee signals no more racing today, whichever is later.
3. Notices will be posted no later than 24 hours after the protest time limit to inform competitors of hearings in which they are parties or named as witnesses. Hearings will be held in the protest room, located at the Dockmaster's office on a date to be confirmed.

## 13. SCORING

1. Each boat's finishing place shall be determined using the RYA Portsmouth Yardstick.
2. The Series will use the low points scoring system.
3. 1 race shall constitute a series.
4. Drops
  - i. When fewer than 5 races have been completed, a boat's series score will be the total of her race scores.
  - ii. When 6 or more races have been completed, a boat's series score will be the total of her race scores excluding her worst score.
  - iii. When 8 or more races have been completed, a boat's score will be the total of her race scores excluding her two worst scores.
5. Season Scoring
  - i. To qualify for a series a competitor must complete at least 50% of that series races.
  - ii. The season will be scored using a boats 3 best series scores.
  - iii. Boats must qualify in at least 2 series to be eligible for the season.

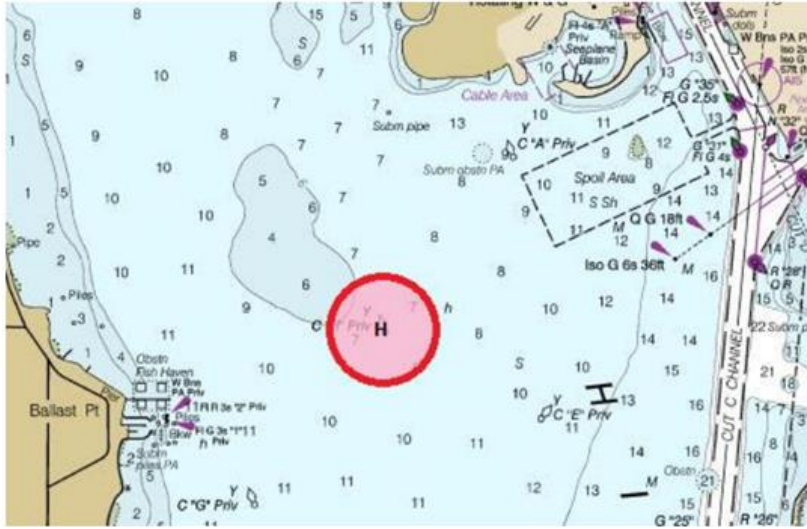
## 14. PRIZES

Prizes will be awarded at the discretion of the race committee.

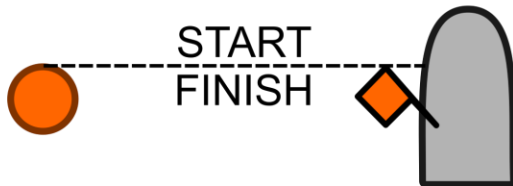
## 15. DISCLAIMER OF LIABILITY

Competitors participate in the regatta entirely at their own risk. See RRS 4, Decision to Race. The organizing authority will not accept any liability for material damage or personal injury or death sustained in conjunction with or prior to, during, or after the regatta.

## A) RACING AREA



## B) COURSE



All rounding marks to port.

W1: Start – 1 – Finish

W2: Start – 1 – 3 – 1 – Finish

TS: start – 1 – 2 – 3 – 1 – Finish