



THISTLE CLASS ASSOCIATION
2024 NATIONAL CHAMPIONSHIP



AUGUST 3 – AUGUST 9, 2024

TOMS RIVER YACHT CLUB
Toms River, New Jersey

SAILING INSTRUCTIONS

The notation '[DP]' in a rule in the SI means that the penalty for a breach of that rule may, at the discretion of the protest committee, be less than disqualification. The notation (NP) in a rule means that a boat may not protest another boat for breaking that rule. *This changes RRS 60.1 (a).*

1. RULES

- 1.1. The regatta is governed by the rules as defined in the Racing Rules of Sailing.
- 1.2. The US Sailing prescription to RRS63.2 will not apply.
- 1.3. The prescription to RRS 63.1 is deleted

2. CHANGES TO SAILING INSTRUCTIONS

Any change to the sailing instructions shall be posted by 0900 on the day it shall take effect, except that any change to the schedule of races shall be posted by 2000 on the day before it shall take effect.

3. COMMUNICATION WITH COMPETITORS

- 3.1. Notices to competitors will be posted on the official notice board –located on a whiteboard on the rear patio of the TRYC– and on RegattaNetwork at <https://www.regattanetwork.com/event/27595>
- 3.2. Competitors are strongly encouraged to join the event WhatsApp group by clicking this [LINK](#) or scanning the QR code shown in Addendum B.
- 3.3. There will be a competitors' meeting at Toms River Yacht Club as a part of the Opening Ceremonies which are scheduled for Sunday, August 4th at 1700hrs.
- 3.4. Radio communications between boats and the Race Committee will be on VHF 68
- 3.5. [NP] The following communications may be made by the race committee using the designated VHF Channel in addition to any Race Signals (*this changes RRS 29, 32, 33 and 41*): Courses, including the bearing and distance to the first mark; postponements and abandonments; boats identified as OCS and general recalls; changing courses or marks and identify marks; shortening the course; time limits.
- 3.6. [DP] A boat shall neither make radio transmissions while racing nor receive radio communications not available to all boats. This restriction also applies to mobile telephones. Exception - competitors are encouraged to inform the race committee of a retirement or safety issue.

4. CODE OF CONDUCT

[NP][DP] Competitors and support persons shall comply with reasonable requests from race officials.

5. SIGNALS MADE ASHORE

- 5.1. Signals made ashore will be on the flagpole on the rear patio of TRYC.
- 5.2. When flag AP is displayed ashore, '1 minute' is replaced with 'not less than 60 minutes' in the race signal AP. *This changes RRS Race Signals.*

6. SCHEDULE OF RACES

6.1. Date	First Warning	Race(s)
Sunday, August 4	1300 hrs	Practice
Monday, August 5	1100 hrs	Races 1 & 2
Tuesday, August 6	1100 hrs	Races 3 & 4
Wednesday, August 7	1100 hrs	Races 5 & 6
Thursday, August 8	1100 hrs	Races 7 & 8
Friday, August 9	1100 hrs	Race 9

6.2. If the Race Committee (RC) is unable to complete the race(s) scheduled for a particular day, then that race(s) will be sailed on subsequent days. Should conditions warrant, the schedule may be modified at the discretion of the National Race Committee per TCA ByLaw Article XIII, Section 5.

6.3. Flag A displayed, with no sound, while boats are finishing means 'No more racing today.'

6.4. No warning signal shall be made after 1500 hrs on Friday, August 9.

6.5. There will be a daily competitors briefing at 0900 at the main flagpole.

7. CLASS FLAG

The class flag will be a green, purple and white pennant with the Thistle logo.

8. RACING AREA

The racing area will be either in the Wanamaker area or the Cedar Creek area, depending on conditions. The approximate location of racing areas is shown in Addendum C.

9. COURSES

9.1. The diagrams in Addendum A show the courses, including the approximate angles between legs, the order in which marks are to be passed and the side on which each mark is to be left.

9.2. No later than the warning signal, the RC signal vessel shall display on its starboard side the designated course on a placard and the approximate compass bearing of the first leg.

10. MARKS

10.1. Marks 1, 2 and 3 will be orange inflatable marks.

10.2. Mark 1a (the offset mark) will be a small orange inflatable mark.

10.3. Marks 4S and 4P (the gate) will be bright green marks.

10.4. New marks, as provided in instruction 14, will be yellow inflatable marks.

10.5. The starting mark will be an anchored vessel displaying a staff with an orange flag. A mid-line buoy, if used, will be an orange inflatable mark.

10.6. The finishing marks will be a white mark, or an anchored vessel displaying a staff with a blue flag.

11. RACING FORMAT

11.1. *Practice Race* – competitors will be split into two fleets based on sail number with the odd numbered boats starting first and the even numbered boats starting second.

11.2. *Qualifying Races (Races 1-3)* – Competitors will race in one fleet as per TCA Bylaw Article XIV, Section 8(a)

11.3. *Championship / President's Division Races (Races 4-9)* – Competitors will sail in one fleet. For scoring purposes, the fleet will be divided as specified in TCA Bylaw Article XIV, Section 14(b).

12. THE START

12.1. The starting line shall be between a staff displaying an orange flag on the signal boat and the course side of a staff displaying an orange flag as described in instruction 10.5.

12.2. The RC may set a buoy as a mid-line reference point near the middle of the start line. This is neither a starting mark nor a mark of the course.

12.3. [NP] After a postponement, general recall or abandonment is signaled by the RC Signal Boat, an RC Mark Boat may, as a courtesy, display code flags AP, 1st substitute or N to facilitate boats returning to the starting area. Only the signals displayed by the RC Signal Boat will govern the conduct of racing. *This changes RRS race signals.*

- 12.4. A boat starting later than five (5) minutes after her starting signal shall be scored Did Not Start without a hearing. *This changes RRS A5.1 and A5.2.*
- 12.5. The Signal boat may trail a substitute mark which will be considered part of the Signal boat

13. WIND SHIFTS – ABANDONMENT [NP]

- 13.1. If a continuing (in excess of 5 minutes) wind shift of 30 degrees or more occurs after the start, but before the first boat passes the first mark, the race shall be abandoned and restarted.
- 13.2. Determination of time and amount of shift is in the sole judgment of a Race Committee representative on the weather stake boat.

14. CHANGE OF THE NEXT LEG OF THE COURSE

To change the next leg of the course, the race committee will lay a new mark(s) (or move the finishing line) and remove the original mark(s) as soon as practicable. When in a subsequent change a new mark is replaced, it will be replaced by an original mark.

15. THE FINISH

The finishing line shall be between a staff displaying a blue flag on the signal boat and the course side of the mark or the staff displaying a blue flag as described in SI 10.6.

16. TIME LIMITS

- 16.1. In accordance with RRS 35, the time limit for each division in each race is 2.5 hours.
- 16.2. Boats failing to finish within 30 minutes after the first boat in their division sails the course and finishes will be scored Time Limit Expired (TLE) without a hearing. *This changes RRS 35, A5.1, A5.2 and A10.*

17. HEARING REQUESTS

- 17.1. The protest time limit is 60 minutes after the RC Signal Boat docks at the end of each racing day or 60 minutes after the RC signals 'No more racing today' ashore, whichever is later.
- 17.2. Hearing request forms are available at the official notice board on the rear patio of TRYC or online ([US Sailing Hearing Request Form](#)).
- 17.3. Notices shall be posted no later than 30 minutes after the protest time limit to inform competitors of hearings in which they are parties or named as witnesses. Hearings shall be held in the chartroom or upstairs dining room of TRYC.
- 17.4. Notices of Race Committee or Protest Committee protests shall be posted on the official notice board to inform boats under RRS 61.1(b).

18. SCORING

- 18.1. The series scores for boats in the Championship and President's Divisions will be the total of all their race scores, including the Qualifying Races, with no races excluded as outlined in TCA Bylaw Article XIV, Section 14(b).
- 18.2. Four (4) races are required to be completed to constitute a series for both the Championship and President's Divisions.
- 18.3. A boat scored DNS, DSQ, DNC or OCS shall be scored points of one more than the number of boats registered. *This changes RRS A5.2.*
- 18.4. A boat scored DNF, RET or TLE are scored by adding the number of registered boats to the number of finishers, then divided by 2 (any resulting fraction shall be rounded up to the nearest whole number). *This changes RRS A5.2.* For the purposes of this calculation, boats scored UFD or BFD will be excluded from the number of finishers.

19. SAFETY REGULATIONS [NP][DP]

- 19.1. Upon arriving in the starting area, boats shall check-in with the race committee by sailing past the stern of the RC Signal Boat on starboard tack, hailing their sail number and receiving confirmation from the RC.
- 19.2. A boat that retires from a race shall notify the race committee at the first reasonable opportunity.
- 19.3. When a race committee vessel displays flag "Y" afloat, RRS 40.1 applies at all times (except temporarily while adding or removing clothing), not just when racing. *This changes RRS 40.2(a).* When flag "Y" is removed afloat, RRS 40.1 no longer applies.

20. REPLACEMENT OF CREW OR EQUIPMENT [NP][DP]

- 20.1. Substitution of crew(s) shall not be permitted except in extenuating circumstances and only with the written approval of the National Race Committee. Refer to TCA Bylaws Article X, Section 4 and Article XIV, Section 5(c).
- 20.2. Substitution for a damaged or lost rudder, centerboard, spar or other major equipment shall not be allowed unless the replacement meets TCA specifications and is authorized in writing by the Technical Committee. Request for substitution shall be made to the Technical Committee in writing at the first reasonable opportunity.
- 20.3. A request for replacement of a registered sail shall be made to the Technical Committee in writing at the first reasonable opportunity and shall not be allowed unless the replacement meets TCA specifications and is authorized in writing by the Technical Committee.
- 20.4. The Technical Committee shall be comprised of the Chief Measurer, a NRC Representative, and a Governing Board Representative.

21. EQUIPMENT AND MEASUREMENT CHECKS [NP][DP]

A boat or equipment may be inspected at any time for compliance with the class rules and sailing instructions. On the water, a boat may be instructed by a Technical Committee equipment inspector to proceed immediately to a designated area for inspection.

22. AWARDS

- 22.1. The National Championship and “Louis Carron Perpetual Trophy” will be awarded to the winning boat in the Championship Division.
- 22.2. Other awards will be made at the discretion of the Organizing Authority.

23. RISK STATEMENT

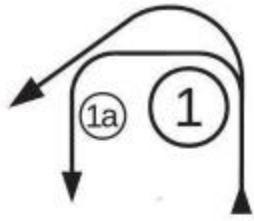
RRS 3 states: “The responsibility for a boat’s decision to participate in a race or to continue to race is hers alone.’ By participating in this event each competitor agrees and acknowledges that sailing is a potentially dangerous activity with inherent risks. These risks include strong winds and rough seas, sudden changes in weather, failure of equipment, boat handling errors, poor seamanship by other boats, loss of balance on an unstable platform and fatigue resulting in increased risk of injury. Inherent in the sport of sailing is the risk of permanent, catastrophic injury or death by drowning, trauma, hypothermia or other causes.” Each competitor shall be required to sign a waiver for loss, damage, or injury to persons or property incurred in connection with the Regatta that occurs as a result of a competitor’s actions.

24. INSURANCE

Each participating boat shall be insured with valid third-party liability insurance with a minimum value of \$100,000 USD. Registrants must show proof of insurance at Registration.

ADDENDUM A – Course Illustrations

Not to Scale



Courses 1 and 2 – Triangle/Windward/Leeward

Signal	Mark Rounding Order
1	Start – 1 – 2 – 3 – 1 – 1a – 4s/4p – Finish (Equilateral triangle)
2	Start – 1 – 2 – 3 – 1 – 1a – 4s/4p – Finish (Right isosceles triangle)

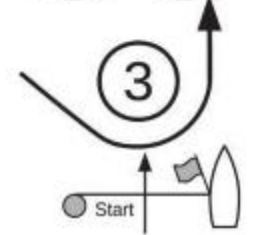
Note: there is no offset mark (1a) when rounding mark 1 for the first time.



Courses 3 and 4 – Windward/Leeward/Triangle

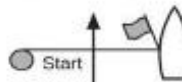
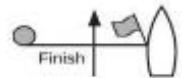
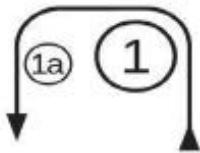
Signal	Mark Rounding Order
3	Start – 1 – 1a – 4s/4p – 1 – 2 – 3 – Finish (Equilateral triangle)
4	Start – 1 – 1a – 4s/4p – 1 – 2 – 3 – Finish (Right isosceles triangle)

Note: there is no offset mark (1a) when rounding mark 1 for the second time.



Course 5 – Windward/Leeward

Signal	Mark Rounding Order
5	Start – 1 – 1a – 4s/4p – 1 – 1a – 4s/4p – Finish



ADDENDUM B – WhatsApp Group QR Code

Scan here to join the group for updates during the regatta.



ADDENDUM C – Racing Area Map

