

# Venetian Cup

Venice Youth Boating & Venice yacht Club  
April 27, 2024  
VHF Ch 67

## Green Fleet Sailing Instructions

Green Fleet is an introductory fleet for beginner novice sailors. Rules of Sailing are important and taught but learning to race while having fun is equally stressed. These sailing instructions are structured within The Racing Rules of Sailing to provide a flexible, less structured, and less formal racing environment. Green Fleet is not scored. All participants receive participation awards. While race placement and progress may be tracked, who places first is less important than learning, improving, and having fun along the way.

**The notation (NP) denotes that a breach of this rule will not be grounds for a protest by the boat. This change is added to RRS60.1(a)**

### 1. RULES

1.1 The regatta will be governed by the rules as defined in The Racing Rules of Sailing 2021-2024

### 2 NOTICES TO COMPETITORS

2.1 Notices to competitors will be posted on the official notice board located at the VYC registration Area

### 3 CHANGES TO SAILING INSTRUCTIONS

3.1 Any change to the sailing instructions will be posted before 0900 on the day it will take effect

3.2 Changes to the schedule of races for the day will be posted by 1800 the day before it shall take place.

### 4 SIGNALS MADE ASHORE

4.1 Signals made ashore will be displayed ashore from the VYC flagpole

### 5 SCHEDULE OF RACES

5.1 To alert boats that a race or sequence of races will begin soon, the orange starting line flag will be displayed with one sound at least **1 minute** before a warning signal is made.

5.2 As many races as possible are scheduled. One race will constitute a regatta.

5.3 Races are scheduled as follows: No warning will be made after 1500.

### **Saturday April 27th;**

0800-0900 Coaches Check their Teams in – Tent at VYC by Pool / Tiki Bar  
0900 Skippers meeting for all competitors  
1000 First Signal for Optimist Green & RWB  
1030 First Signal for All Other Classes  
1500 No Warnings after this time

Awards to follow racing on lawn beside VYC Tiki Bar

## **6 CLASS FLAG**

6.1 Class Flag is the Opti insignia on a green flag.

## **7 THE COURSES**

7.1 The course diagrams are in Attachment A. They show the course, the order in which marks are to be passed, and the side on which each mark is to be left.

## **8 MARKS**

8.1 Windward, Wing and Leeward marks will be red ball fenders plus some fun extras.

8.2 The start/finish line will be marked by an inflatable dragon and the RC Boat

## **9 THE START**

9.1 Races will be started by using RRS 26 modified

9.2 Modified starting Sequence:

4 min warning- orange starting line flag- one signal

3 min warning-class flag raised- three long signal

2 min warning-prep flag raised-two long signal

1 min warning-prep flag lowered-one long signal

30 sec warning- 3 short

20 sec warning- 2 short

10 sec warning- 1 short

5-4-3-2-1- short blast 1 sec apart

Start-class flag lowered- one signal

9.2 The starting line will be between a staff displaying an orange flag on the race committee vessel and the inflatable dragon.

9.3 (NP) A boat that does not start within 4 minutes after starting signal will be scored DN

## **10 CHANGES OF THE NEXT LEG OF THE COURSE**

10.1 Marks will be moved to adjust for conditions only between races.

## **11 THE FINISH**

11.1 The finishing line will be between the race committee vessel and the course side of the start/finishing mark. The finish line is the same as the start line in all courses.

## **12 TIME LIMITS**

12.1 The following time limits will apply:

- Race Time Limit Is 60 minutes-Time limit for the first boat to sail the course and finish
- Finishing Window is 20 minutes-Time limit for the boats to finish after the first boat sails the course and finishes

12.2 (NP) Boats sailing the course and failing to finish within the finishing window of the first boat in her class (that sails the course and finishes) will be scored TLE without a hearing.

This changes RRS 35,63.1 and A5.1

## **13 PROTESTS AND REQUESTS FOR REDRESS**

13.1 Since Green Fleet is not scored. Protests are teaching opportunities. An open discussion of the protest process (mock Protest) may be held if resources are available. All competitors, parents and coaches are encouraged to attend and observe.

13.2 The protesting boat shall inform the other boat at the first reasonable opportunity AND inform the Signal Boat of a protest. RRS 61.1

## **14 SAFETY REGULATIONS**

**14.1 Check-In with the Signal Boat before the initial warning signal of the first race of each day by sailing near the Signal Boats stern on a starboard tack and hailing your sail number until acknowledged by the Signal Boat. Failure to check in may result in a penalty.**

14.2 A boat retiring from the race shall notify a Race Committee vessel before leaving the course, or, when that is not possible, notify the Race Office immediately upon arriving ashore.

14.3 All competitors shall always wear personal floatation devices while afloat

## **15 COACHING**

15.1 Coaching is encouraged by the race committee. Coaching should focus on the bottom half of the fleet. Coaching on the water is for all, and all coaches are required to assist all sailors. All coaches are required to have VHF radios on and operating on the Green Fleet race committee channel, VHF 67, while racing is underway. The race committee has the right to remove from the Green Fleet course any coach who disregards the instructions of the race committee.

## **16 SUPPORT BOATS**

16.1 Support vessels shall monitor **VHF Channel # 67**

16.2 All support boats equipped with an emergency cutoff switch, the operator shall always wear the associated lanyard when in the vicinity of competitors, the sailing area, and VYBA/VYC/Higel docks.

16.3 Team leaders, coaches, and other support persons shall stay outside areas where boats are racing from the time of the preparatory signal for the first class to start until all boats have finished or retired or the race committee signal postponement or abandonment.

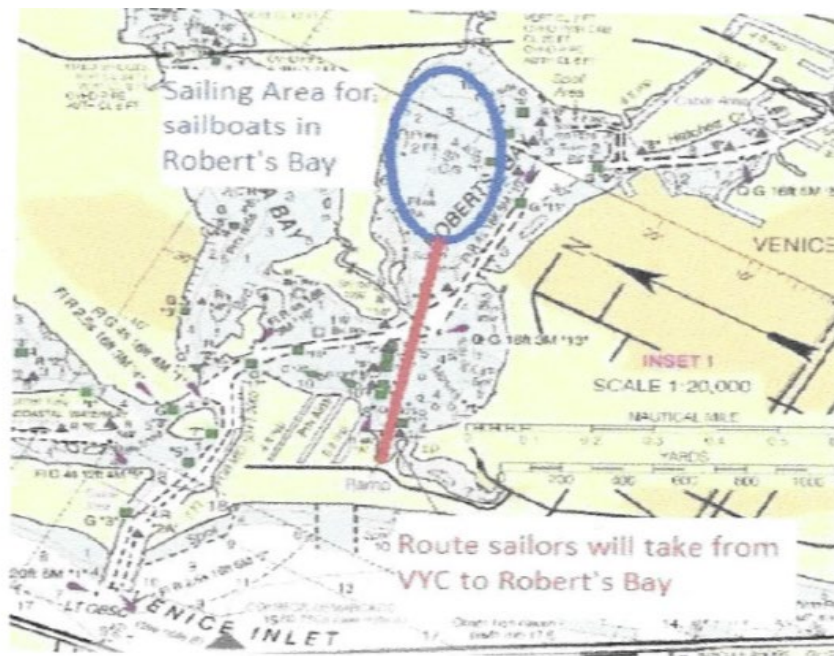
16.4 All coach boats and other support boats shall come to the aid of any competitor in distress or requesting assistance.

16.6 All support boats shall comply with US Coast Guard regulations.

## 17 PRIZES

17.1 All participants receive participation awards. While placement and progress may be tracked, scores are less important than learning, improving, and having fun along the way.

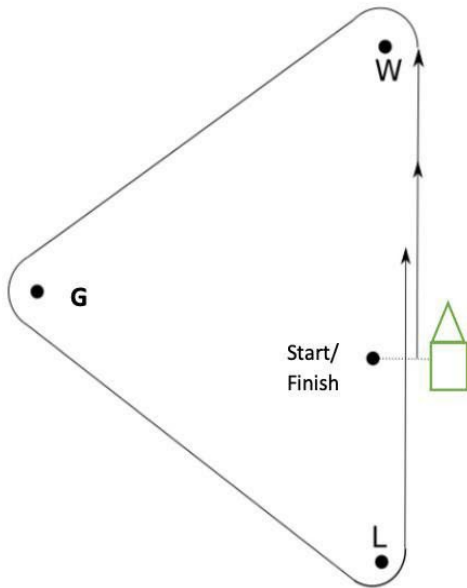
## RACING AREA Roberts Bay



# Appendix A – Course

## Green Fleet Opti Courses

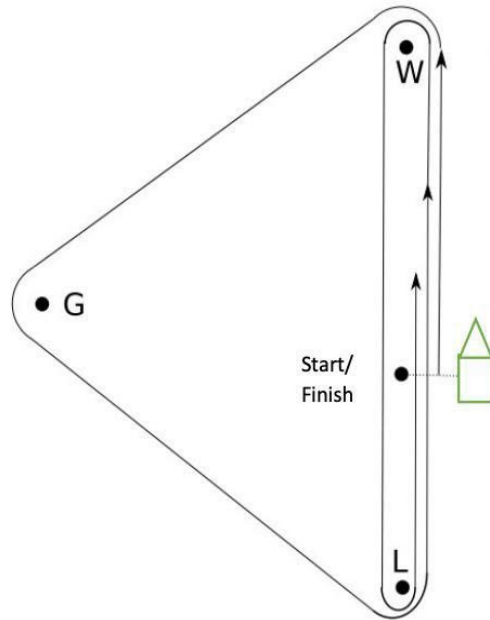
COURSE A



Course A-

Start – W – G – L – Finish

COURSE B



Course B-

Start – W – G – L – W – L – Finish