



Venetian Cup
Venice Youth Boating & Venice Yacht Club
April 27, 2024
VHF Ch 68

RWB Sailing Instructions

The notation (NP) denotes that a breach of this rule will not be grounds for a protest by the boat. This change is added to RRS60.1(a)

1. RULES

1.1 The regatta will be governed by the rules as defined in The Racing Rules of Sailing 2021-2024

2 NOTICES TO COMPETITORS

2.1 Notices to competitors will be posted on the official notice board located at the VYC registration Area.

3 CHANGES TO SAILING INSTRUCTIONS

3.1 Any change to the sailing instructions will be posted before 0900 on the day it will take effect.

3.2 Changes to the schedule of races for the day will be posted by 1800 the day before it shall take place.

4 SIGNALS MADE ASHORE

4.1 Signals made ashore will be displayed ashore from the VYC flagpole.

5 SCHEDULE OF RACES

5.1 To alert boats that a race or sequence of races will begin soon, the orange starting line flag will be displayed with one sound at least **1 minute** before a warning signal is made.

5.2 As many races as possible are scheduled. One race will constitute a regatta.

5.3 Races are scheduled as follows: No warning will be made after 1500.

Saturday April 27th.

0800	Coaches Check their teams in – Tent at VYC by Pool / Tiki Bar
0900	Skippers meeting for all competitors
1000	First Signal for Optimist Green & RWB

1030 First Signal for All Other Classes
1500 No Warnings after this time

Awards to follow racing on lawn beside VYC Tiki Bar

6 CLASS FLAG

6.1 Class flag is the Opti insignia on a white flag.

7 THE COURSES

7.1 The course diagrams are in Attachment A. They show the courses, the order in which marks are to be passed, and the side on which each mark is to be left.

8 MARKS

8.1 Start pin is White Ball, Finish is Orange Tetrahedron, windward mark (1) will be an yellow inflatable cylinder, offset mark (1a) will be red Ball and the gate (2S/2P) will be orange inflatable cylinders.

9 THE START

9.1 Races will be started using sequence in Appendix U. which replaces RRS 26

9.2 The starting line will be between a staff displaying an orange flag on the signal boat and the course side of the start mark, white ball.

9.3 (NP) A boat that does not start within 4 minutes after starting signal will be scored DNS

10 CHANGES OF THE NEXT LEG OF THE COURSE

10.1 Marks will be moved to adjust for conditions only between races.

11 THE FINISH

11.1 The finishing line will be between the staff displaying a Blue flag on the signal boat and the course side of the finishing mark

12 TIME LIMITS

12.1 The following time limits will apply:

- Race Time Limit Is 60 minutes-Time limits for the first boat to sail the course and finish
- Finishing Window is 20 minutes-Time limits for the boats to finish after the first boat sails the course and finishes

12.2 (NP) Boats sailing the course and failing to finish within the finishing window of the first boat in her class (that sails the course and finishes) will be scored TLE without a hearing.

This changes RRS 35,63.1 and A5.1

13 PROTESTS AND REQUESTS FOR REDRESS

13.1 The protesting boat shall inform the other boat at the first reasonable opportunity AND inform the Signal Boat of a protest. RRS 61.1

13.2 Protest forms are available at the race office (by the VYC pool). Protests and requests for redress or reopening shall be delivered there within the appropriate time limit.

13.3 The protest time limit is **30 minutes after the last race committee boat** has docked.

13.4 Notices will be posted no later than 10 minutes after the protest time limit to inform competitors of hearings in which they are parties or named as witnesses and were the hearings will be held.

13.5 Notices of protests by the race committee, technical committee or protest committee will be posted to inform boats under RRS 61.1(b).

14. SCORING

14.1 The Low Point System of Appendix A will apply.

14.2 When fewer than five (5) races have been completed, a boat's series score will be the total of her race scores. When five (5) or more races have been completed, a boat's series score will be the total of her race scores excluding her worst score. This changes RRS A2.1

14.3 Boats scored a TLE will be scored points equal to the number of boats which sail the course and finish within the time limit plus two points by the race Committee without a hearing, not to exceed the points for DNF. This changes RRS 35, A5.1, A5.2 and A10.

15 SAFETY REGULATIONS

15.1 Check-In with the Signal Boat before the initial warning signal of the first race by sailing near the Signal Boats stern on a starboard tack and hailing your sail number until acknowledged by the Signal Boat. Failure to check in may result in a penalty.

15.2 Failure to comply with 15.1 shall result in, without a hearing, a boat having 2 pts added to her position in her last completed race of the day. This changes RRS 63.1, 64.1, A3, A5 and A11

15.3 A boat retiring from the race shall notify a Race Committee vessel before leaving the course, or, when that is not possible, notify the Race Office immediately upon arriving ashore.

15.4 All competitors shall always wear personal floatation devices while afloat.

16 SUPPORT BOATS

16.1 Support vessels shall monitor **VHF Channel # 68**

16.2 All support boats equipped with an emergency cutoff switch, the operator shall always wear the associated lanyard when in the vicinity of competitors, the sailing area, and VYBA/VYC/Higel docks.

16.3 Team leaders, coaches, and other support persons shall stay outside areas where boats are racing from the time of the preparatory signal for the first class to start until all boats have finished or retired or the race committee signal postponement or abandonment.

16.4 All coach boats and other support boats shall come to the aid of any competitor in distress or requesting assistance.

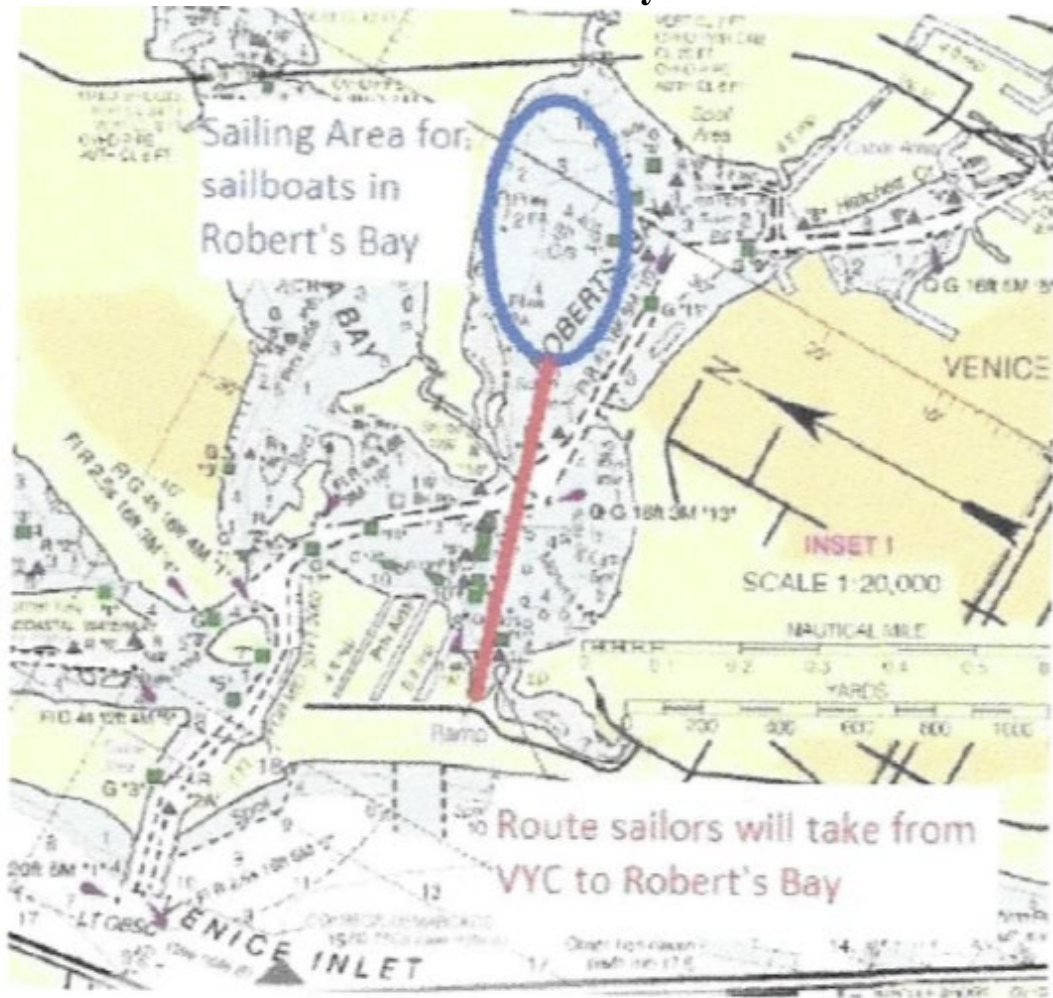
16.5 All support boats shall comply with US Coast Guard regulations.

17 PRIZES

17.1 Prizes will be given to the top three finishers overall and the top finisher in each individual class as stated in the NoR.

RACE AREA

Roberts Bay



ATTACHMENT A – Course

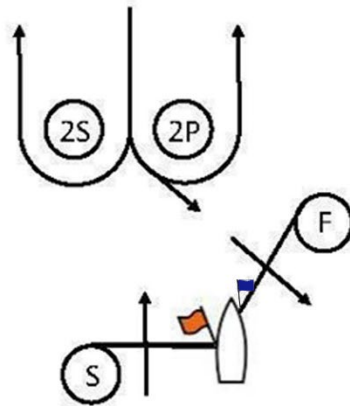
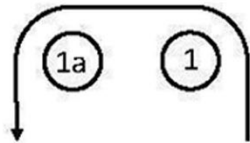
WINDWARD/LEEWARD WITH OFFSET, REACH FINISH

Course WL – Windward/Leeward, Reaching Finish

Mark Rounding Order Start – 1 – 1a – 2P – Finish.

Course WL2 – Windward/Leeward, Reaching Finish

Mark Rounding Order: Start – 1 – 1a – 2S/2P – 1 – 1a – 2P - Finish.



Start Pin- White Ball
1-winward mark-small yellow cylinder
2s/2p- gate- small orange cylinders

Finish Pin- Orange tetrahedron.
1a-offset-red ball