



2024 HYC Spring Series

March 16, 23 and April 13, 2024

The Houston Yacht Club
3620 Miramar Drive, Shoreacres, TX 77571
(281) 471-1255



SAILING INSTRUCTIONS

- 1. RULES** The regatta shall be governed by the rules as defined in the *Racing Rules of Sailing*.
 - 1.1. The notation '[DP]' means that the penalty for breaking this provision will be a discretionary penalty, which may be less than disqualification. The notation '[NP]' in a rule of the NOR or SI means that a boat may not protest another boat for breaking that rule. This changes RRS 60.1(a).
- 2. CHANGES TO SAILING INSTRUCTIONS**
 - 2.1. Any change to the sailing instructions will be posted before 0900 on the day it will take effect, except that any change to the schedule of races will be posted by 1800 on the day before it will take effect.
- 3. COMMUNICATIONS WITH COMPETITORS**
 - 3.1. Notices to competitors will be posted on the official notice board located in the breezeway adjacent to the HYC Office. Copies of notices may be posted at www.regattanetwork.com/event/27738.
 - 3.2. On the water, the race committee intends to communicate with competitors on VHF Channel 68.
 - 3.3. [DP] While racing, except in an emergency, a boat shall not make voice or data transmissions and shall not receive voice or data communication that is not available to all boats.
- 4. SIGNALS MADE ASHORE**
 - 4.1. Signals made ashore will be displayed from the flagpole at Houston Yacht Club.
 - 4.2. When flag AP is displayed ashore, '1 minute' is replaced with 'not less than 60 minutes' in Race Signals AP.
- 5. SCHEDULE OF RACES**
 - 5.1. The **Dates of Racing** are listed in NOR 6.6.
 - a Saturday, March 16, 2024
 - b Saturday, March 23, 2024
 - c Saturday, April 13, 2024
 - 5.2. On each day of racing:
1000 Competitor's Briefing Beachcomber
1130 First warning signal
 - 5.3. Up to three (3) races are planned for each day of racing.
 - 5.4. On each day of racing, no warning signal will be made after **1600** hours.
 - 5.5. Flag "A" (ALPHA) displayed with no sound while boats are finishing means "no more racing today".
- 6. CLASS FLAGS**

Class flags and order of starts are defined in the Addendum: *Class Flags and Order of Starts*.

SAILING INSTRUCTIONS

7. RACING AREA

- 7.1. All classes will sail around designated marks in the area bounded by Morgan's Point on the North, the Bayport Ship Channel on the South, the Houston Ship Channel on the East, and the La Porte/Shoreacres shoreline on the West. The approximate location of the racing area is described in the Addendum: *Racing Area and Mark Locations*.
- 7.2. Boats shall not enter any Ship Channel while racing. Ship Channels are designated as obstructions.

8. [NP] CHECK IN

- 8.1. Prior to the warning for the first race of each day, each boat shall check-in. Check-in means passing on starboard tack, close astern of the Race Committee Signal Boat displaying the code Flag "L" and hailing her sail number and being recognized by the Race Committee.
- 8.2. Boats failing to check-in shall receive a 20% scoring penalty in the first race of the day, without a hearing, in accordance with RRS 44.3 (c).

9. COURSES

- 9.1. The course diagrams are shown in the Addendum: *Course Diagrams* and show the courses, the order in which the marks are to be passed, and the side on which each mark is to be left.
- 9.2. No later than the warning signal, the race committee will designate the course and the approximate compass bearing of the first leg on the course board.
- 9.3. If a gate mark is missing, the remaining gate mark shall be rounded leaving the mark to port.
- 9.4. **The PHRF classes will race the following courses:**
 - 9.4.1. **L or LA Course on March 16, 2024**
 - 9.4.2. **Distance Course on March 23, 2024**
 - 9.4.3. **L or LA Course on April 13, 2024**

10. MARKS

- 10.1. Pursuit course marks are floating objects or fixed shapes as described in Addendum: *Racing Area and Mark Locations*.
- 10.2. Mark 1, 2, 2S, and 2P are yellow tetrahedrons. Offsets are marks or floating shapes.
- 10.3. For Dinghy classes, mark 1 will be announced at the competitor's briefing.

11. OBSTRUCTIONS

Boats shall not enter any Ship Channel while racing. Ship Channels are designated as obstructions.

12. THE START

- 12.1. Races will be started using RRS 26.
- 12.2. The starting line will be between a staff displaying an orange flag from the signal boat on the starboard end and a mark or floating shape at the port end.
- 12.3. Boats whose warning signal has not been made shall avoid the starting area during the starting sequence for other boats.
- 12.4. If any part of a boat's hull is on the course side of the starting line at her starting signal and she is identified, the race committee will attempt to hail her sail number. Failure to hail her number, failure of her to hear such a hail, or the order in which boats are hailed will not be grounds for a redress for request. This changes RRS 62.1(a).
- 12.5. A boat that does not start within 5 minutes after her starting signal will be scored Did Not Start without a hearing. This changes RRS A5.1 and A5.2.

SAILING INSTRUCTIONS

13. CHANGE OF THE NEXT LEG OF THE COURSE

- 13.1. The change marks are orange tetrahedrons.
- 13.2. To change the next leg of the course, the Race Committee will lay a new mark and remove the original mark as soon as practicable. When in a subsequent change a new mark is replaced, it will be replaced by an original mark.

14. THE FINISH

- 14.1. The Finish Line will be between a staff displaying an orange or blue flag on the Race Committee boat and a nearby floating shape.
- 14.2. If the race committee is absent when a boat finishes, she shall report her finishing time, and her position in relation to nearby boats, to the race committee at the first reasonable opportunity.

15. PENALTY SYSTEM

RRS Appendix **V1 & V2** are in effect. The arbitrator may also be a member of any subsequent protest committee if the dispute cannot be settled at arbitration.

16. TIME LIMITS AND TARGET TIMES

- 16.1. Mark 1 Time Limit: 45 minutes for the first boat in a class to pass Mark 1.
- 16.2. Finishing Window: 30 minutes for boats to finish after the first boat in its class starts, sails the course, and finishes.
- 16.3. If no boat in a class has passed Mark 1 within the Mark 1 Time Limit, the race shall be abandoned for that class.
- 16.4. Boats failing to finish within the Finishing Window shall be scored Did Not Finish (DNF) without a hearing. This changes RRS 35, A5.1 and A5.2.

17. HEARING REQUESTS

- 17.1. Validity. Intent to protest shall be signaled in accordance with RRS 61.1. The protesting boat shall also notify the Race Committee at the first reasonable opportunity and be acknowledged before leaving the finish area. This changes RRS 61.1.
- 17.2. Protests shall be written on forms available at the office of the Houston Yacht Club and delivered there within forty-five (45) minutes following the arrival in the harbor of the Race Committee boat for the racing line involved. This time will be posted on the "HYC Race Information" official notice board. This changes RRS Appendix S13.2.
- 17.3. The times and locations of the protest hearings, along with the names of the boats involved will be posted on the "HYC Race Information" official notice board at the entrance to the breezeway adjacent to the offices of The Houston Yacht Club no later than thirty (30) minutes after the protest time period.
- 17.4. For the purpose of meeting obligations under US Sailing prescriptions concerning redress, notification of a redress hearing shall be by posting on the official notice board for thirty (30) minutes. The requirement for written requests for attendance of the hearing will be satisfied by a signup sheet at the official protest table. No more than one person per boat may attend. No request for reopening a hearing will be accepted later than 30 minutes after a protest committee decision has been posted on the "HYC Race Information" official notice board. This changes RRS 62.2.
- 17.5. As a courtesy, the Protest Committee will attempt to notify the parties to a protest hearing or a redress hearing by telephone at the telephone number provided online on Regatta Network upon registration.

SAILING INSTRUCTIONS

18. SCORING

- 18.1. The scoring system is in accordance with RRS Appendix A.
- 18.2. One (1) race is required to be completed to constitute a series.
- 18.3. When four (4) or more races have been completed, a boat's series score shall be the total of her race scores excluding her worst score.
- 18.4. Rule A5.3 applies.

19. RISK STATEMENT

- 19.1. RRS 3 states: "The responsibility for a boat's decision to participate in a race or to continue *racing* is hers alone." By participating in this event each competitor agrees and acknowledges that sailing is a potentially dangerous activity with inherent risks. These risks include strong winds and rough seas, sudden changes in weather, failure of equipment, boat handling errors, poor seamanship by other boats, loss of balance on an unstable platform and fatigue resulting in increased risk of injury.
Inherent in the sport of sailing is the risk of permanent, catastrophic injury or death by drowning, trauma, hypothermia, or other causes.
- 19.2. The organizing authority will not accept any liability for material damage or personal injury, or death sustained in conjunction with or prior to, during, or after the regatta.

20. INSURANCE

[NP] Each participating keel boat shall be insured with valid third-party liability insurance with a minimum coverage of \$300,000.00 per incident or the equivalent. Note: Most homeowner's and renter's insurance policies have such coverage, but actual boat insurance is always better.

21. PRIZES

Trophies for the series will be awarded on the last day of racing.

22. FURTHER INFORMATION

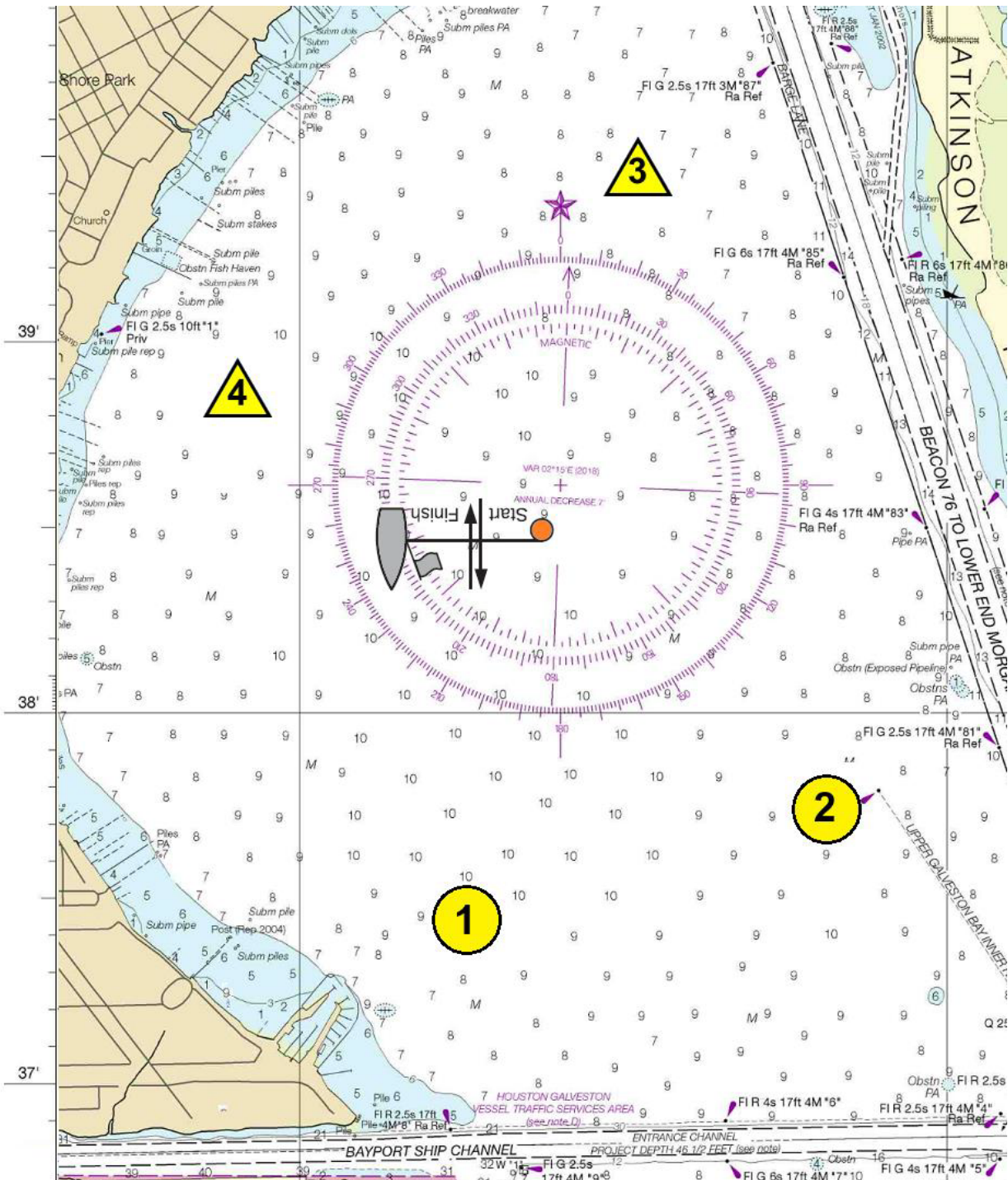
Megan Larson, Principal Race Officer, megan.larson.hyc@gmail.com

SAILING INSTRUCTIONS

ADDENDUM: RACING AREA AND MARK LOCATIONS - DISTANCE COURSE

APPROXIMATE LOCATIONS OF MARKS:

MARK 1	ORANGE Floating Shape	29° 37.367'N, 94° 59.726'W	(29.622783, -94.995433)
MARK 2	FIXED, aka "High Range"	29° 37.790'N, 94° 58.214'W	(29.629833, -94.970233)
MARK 3	YELLOW Floating Shape	29° 39.833'N, 94° 58.919'W	(29.663883, -94.981983)
MARK 4	YELLOW Floating Shape	29° 38.839'N, 95° 00.114'W	(29.647317, -95.001900)



SAILING INSTRUCTIONS

ADDENDUM: DISTANCE COURSE DESCRIPTIONS

COURSE # 1 S. winds, Total Distance ~ 6.50 nm. Start Upwind

Mark 1	Leave on Port	~0.75 nm
Mark 2	Leave on Port	1.38 nm
Mark 3	Leave on Port	~2.14 nm
Mark 4	Leave on Port	~1.44 nm
Finish Upwind		~0.75 nm

COURSE # 2 SE. winds, Total Distance ~ 7.00 nm. Start Upwind

Mark 2	Leave on Port	~1.00 nm
Mark 3	Leave on Port	~2.14 nm
Mark 4	Leave on Port	~1.44 nm
Mark 1	Leave on Port	~1.51 nm
Finish Downwind		~1.00 nm

COURSE # 3 NW. winds, Total Distance ~ 8.00 nm. Start Upwind

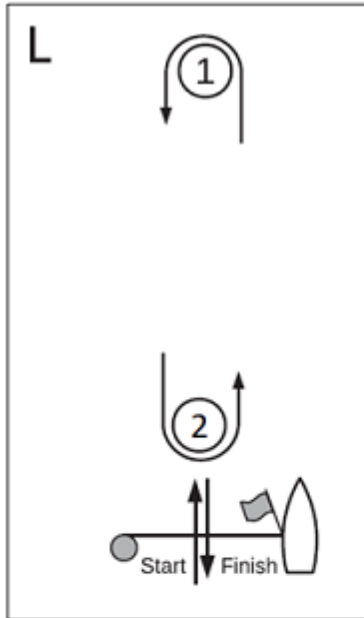
Mark 4	Leave on Port	~0.75 nm
Mark 1	Leave on Port	~1.51 nm
Mark 2	Leave on Port	~1.38 nm
Mark 3	Leave on Port	~2.14 nm
Mark 4	Leave on Port	~1.44 nm
Finish Downwind		~0.75 nm

COURSE # 4 NE. winds, Total Distance ~ 7.00 nm Start Upwind

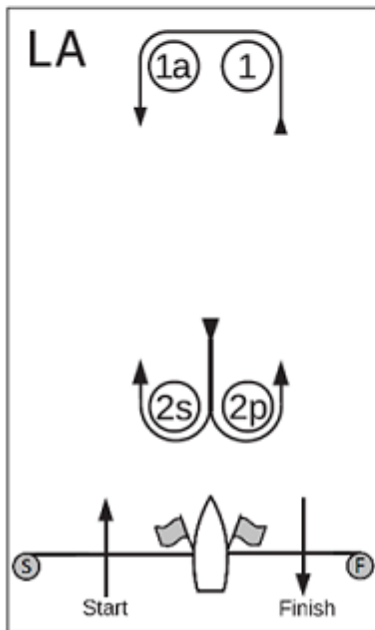
Mark 3	Leave on Port	~0.75 nm
Mark 4	Leave on Port	~1.44 nm
Mark 1	Leave on Port	~1.51 nm
Mark 3	Leave on Port	~2.56 nm
Finish Downwind		~0.75 nm

SAILING INSTRUCTIONS

ADDENDUM: COURSE DIAGRAMS



Course L – Windward/Leeward, Leeward Finish	
Signal	Mark Rounding Order
L2	Start - 1 - 2 - 1 - Finish
L3	Start - 1 - 2 - 1 - 2 - 1 - Finish
L4	Start - 1 - 2 - 1 - 2 - 1 - 2 - 1 - Finish



Course LA – Windward/Leeward with Offset Mark, Leeward Finish	
Signal	Mark Rounding Order
LA2	Start - 1 - 1a - 2s/2p - 1 - 1a - Finish
LA3	Start - 1 - 1a - 2s/2p - 1 - 1a - 2s/2p - 1 - 1a - Finish
LA4	Start - 1 - 1a - 2s/2p - 1 - 1a - 2s/2p - 1 - 1a - 2s/2p - 1 - 1a - Finish

SAILING INSTRUCTIONS

ADDENDUM: CLASS FLAGS and ORDER of STARTS

Class Flags & Starting Order for FIRST RACE of each day

<u>CLASS</u>	<u>FLAG</u>
PHRF Non-Spin	Pink Flag
PHRF Spin (A and B)	Gray Flag
Ensigns	Ensign Class Flag
J/22	J/22 Class Flag
J/24	J/24 Class Flag
Sunfish	Purple Flag
ILCA	ILCA Class Flag
C-420	C-420 Class Flag
Melges 15	Melges 15 Class Flag

At Houston Yacht Club, we are grateful for our sponsors and volunteers!

Thank you for your contributions and supporting our racing program!



PHRF Galveston Bay