



SAILING INSTRUCTIONS

Westlake Yacht Club,
Commodore's Cup Regatta
April 28, 2024

Westlake Village, California

1. Rules

1.1 This regatta will be governed by the Racing Rules of Sailing, 2021-2024 (RRS), <https://www.racingrulesofsailing.org/rules>.

1.2 For each race, a Finishing Window of 10 minutes is the time for boats to finish after the first boat sails the course and finishes. Boats failing to finish within the Finishing Window, and not subsequently retiring, penalized, or given redress, will be scored Time Limit Expired (TLE) without a hearing. A boat scored TLE shall be scored a point for starting. This changes RRS 35, A5 and A10.

1.3 The start/finish line, which is delineated as that area between and including the two marks in front of the yacht club, is restricted to sailing except when starting or finishing a race and during each fleet's relevant "starting sequence" period which begins 3 minutes prior to the start of each race. Keep clear of the start/finish area when you are not racing. The start/finish line is to be treated as an obstruction of the race course per RRS rules 19 and 20.

1.4 Any competitor colliding with a docked boat is automatically disqualified from that race, and shall promptly inform the Race Committee of the collision and retire from that race.

1.5 WYC reserves the right to disqualify any boat involved in a collision.

1.6 Each competitor under 21 years of age must wear a USCG-approved personal flotation device. RRS 40.1 is always in effect in this race venue for under-age competitors.

2. Safety

2.1 Competitors are reminded that they participate entirely at their own risk. See RRS 3, Decision to Race.

2.2 Competitors are reminded that RRS 1 requires you to help any boat or person in danger. Outside help may be given to an injured person or person in danger, or among boats involved in a collision without penalty (RRS 41). Capsized boats may decline help from a WYC chase boat if not in danger and thereby avoid penalty. WYC reserves the right for the organizing authority and its chase boat operator(s) to determine whether a capsized competitor is in danger.

3. Entry

3.1 Entrants must be members of a yacht club or sailing association affiliated with the Southern California Yachting Association (SCYA), or current member in good standing with the U.S. Sailing organization.

3.2 At least two entries are required to establish a fleet/class.

3.3 Competitors are required to enter the event on-line either through Regatta Network website at <https://www.regattanetwork.com/html/calendar.php#> or through the WYC website at <https://westlakeyc.org/Regattas>, or the Constant Contact email blast (for WYC members) which will both re-direct to Regatta Network. Registration will be open until 11:30 AM on the day of the regatta.

3.4 Competitors bringing a boat from outside the lake must comply with Quagga/Zebra mussel inspection procedures and requirements, as described in the Notice of Race. A request to bring a boat from outside must be filed with the Rear Commodore at least 48 hours before the start of the first race. Boats must be at the launch gate ready for inspection by 10:00 a.m. the day of the regatta.

4. Schedule

4.1 The event schedule is shown in the Notice of Race.

4.2 Order of class starts and changes to the sailing instructions, if any, will be given at the competitors meeting at 12:30 p.m. on the day of the event.

4.3 The warning signal for the first race is scheduled at 12:57 p.m.

4. Courses and Signals

4.1. Race courses start and finish in front of the clubhouse deck, and are along the western side of the lake, as shown on the WYC course chart below.

5. Scoring, Protests and Awards

5.1 A low point scoring system will be used based on accumulated finish scores.

5.2 The protest time limit is 20 minutes after completion of the last race. Completed protest forms must be submitted to the Race Committee within the time limit. The protest committee may extend the time if there is good reason to do so. A protest hearing will be held as soon as practicable.

5.3. Trophies will be awarded approximately 30 minutes after the final race is completed. There will be 1 trophy awarded for a class of three boats, 2 trophies will be awarded for each class of 4 boats, and three trophies awarded for each class of 7 or more boats. Participatory awards may be given out at the discretion of the Rear Commodore.

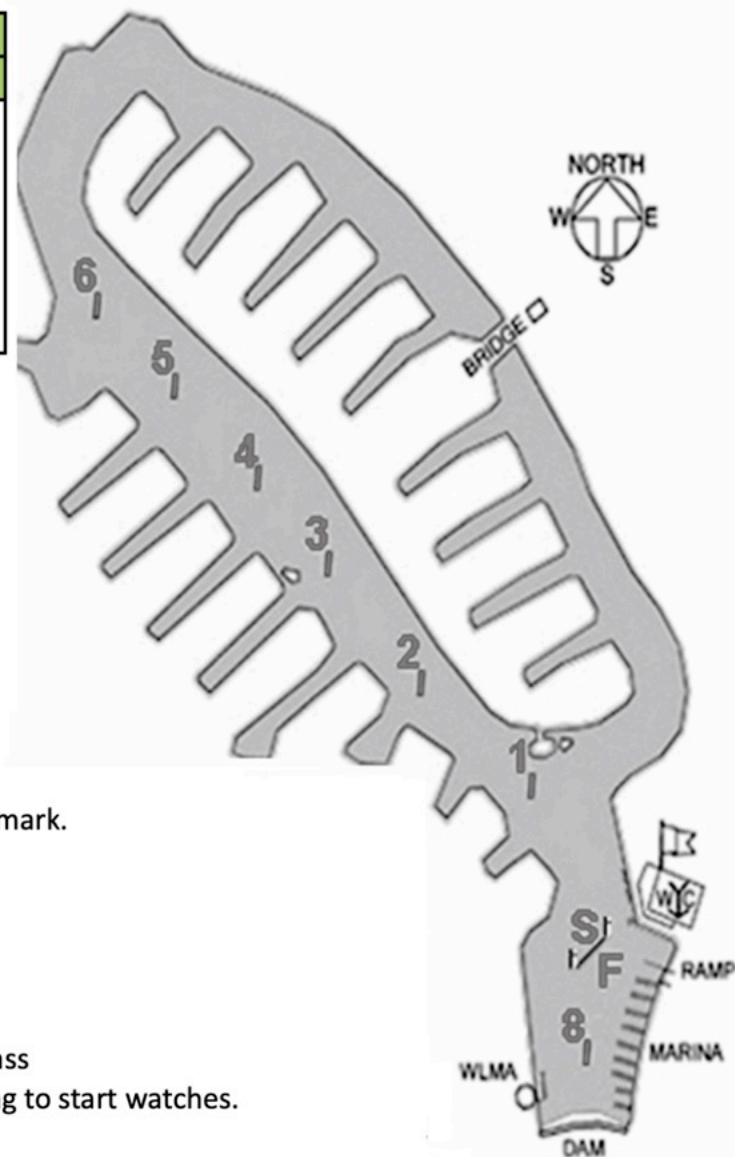
6. Contact

6.1 For more information, contact the WYC Rear Commodore Michael Koslow, (661) 816-4141, caccm2011@gmail.com

WYC Course Numbers, Horns, & Flags

North-West Start		South Start	
Course #	Marks	Course #	Marks
1	Start 1 8 Finish	81	Start 8 1 Finish
2	Start 2 8 Finish	82	Start 8 2 Finish
3	Start 3 8 Finish	83	Start 8 3 Finish
4	Start 4 8 Finish	84	Start 8 4 Finish
5	Start 5 8 Finish	85	Start 8 5 Finish
6	Start 6 8 Finish	86	Start 8 6 Finish

Extra Loop NW Start	
Course #	Marks
21	Start 2 1 2 8 Finish
32	Start 3 2 3 8 Finish
31	Start 3 1 3 8 Finish
42	Start 4 2 4 8 Finish
41	Start 4 1 4 8 Finish
52	Start 5 2 5 8 Finish



- * Start in the direction of the first mark of the course.
- * Finish in the direction of the start-finish line from the last mark.
- * Leave all marks to Port.
- * Stay clear of the start-finish line except to start or finish.
- * Stay clear of docks and electric boats.
- * Right of way is not the right to collide with another boat.
- * Over Early (OCS) will be hailed by the Race Committee.
- * There will be a 3 minute rolling start sequence for each class
- * The first sequence only will get a 4-horn 30 second warning to start watches.

TIME	HORN	FLAG DISPLAYED	DESCRIPTION
3:30	4-beep	PFD Flag Up	30 seconds to prepare watches
3:00	1-beep	First Class Flag & Course # Up	Start of 3 minute sequence
2:00	1-beep	Preparatory Flag Up	2 minutes to start of class
1:00	1-beep	Preparatory Flag Down	1 minute to start of class
0:00	1-beep	Class Flag Down. Next Class Flag Up	Class starts. Begin next 3 min. sequence



PFD REQ'D



POSTPONE



PREPARATORY



X FLAG OCS



GEN RECALL



SHORTEN COURSE



ABANDON RACE



LASER



LASER RAD



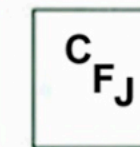
C14.2



C18



TERA



CFJ



LIDO 14