

2024 BEVERLY YACHT CLUB SAILING INSTRUCTIONS FOR SERIES RACES

The notation '[DP]' in a rule of the sailing instructions (SIs) means that a penalty for a breach of the rule may, at the discretion of the protest committee, be less than disqualification. In the event of any conflict between the *Notice of Race* and the *Sailing Instructions*, the *Sailing Instructions* will prevail.

1. RULES

All BYC races are governed by the rules as defined in *The Racing Rules of Sailing 2021-2024* (RRS).

2. CHANGES TO SAILING INSTRUCTIONS

2.1 Any change to the *Sailing Instructions* will be posted before 0900 on the day it will take effect, except that any change to the schedule of races will be posted by 2000 on the day before it will take effect. Changes to the Race Calendar must be posted at least 24 hours prior to the first scheduled warning signal of a Series.

2.2 Changes to the *Sailing Instructions* may be made on the water by the race committee boat prior to the warning signal after displaying code flag "L" and communicated via a radio announcement.

3. COMMUNICATIONS WITH COMPETITORS

3.1 Notices to competitors will be posted on the official notice board for the series in Regatta Networks through the BYC website at beverlyyachtclub.org/racing and courtesy copies may be posted on the bulletin board on the BYC porch.

3.2 On the water, the race committee intends to monitor and communicate with competitors on VHF radio CH 72.

3.3 [DP] While racing, except in an emergency, a boat shall not make voice or data transmissions and shall not receive voice or data communication that is not available to all boats.

4. CODE OF CONDUCT

[DP] Competitors and support persons shall comply with reasonable requests from the race officials.

5. SIGNALS MADE ASHORE

5.1 Signals made ashore will be displayed from the BYC flagpole.

5.2 When flag AP is displayed ashore, '1 minute' is replaced with 'not less than 60 minutes' in Race Signals AP.

6. SCHEDULE OF RACES

Series	Warning	Special Dates	Warning
Tuesday Twilight	1800		
Wednesday Twilight	1800		
Thursday Ladies	1400		
Thursday Twilight	1800	8/15, 8/22, 8/29	1730
Saturday	1400	8/3	1100
Sunday	1400		
Sunday Fall Series	1000		

7. CLASS SIGNALS AND FLAGS

Class signals will be displayed on placards before the course designation on the signal boat course board. PHRF boats shall display their class numeral pennant from their backstays while racing.

Class	Signal
Bullseye, H-12, J/80, Shields	Class Insignia
PHRF	Number pennants 1, 2, or 3

8. COURSES

8.1 For courses using the marks described in the attached mark list at the bottom of the [Beverly Yacht Club Racing Marks](#) chart, the course will be designated by displaying placards on the signal boat course board. The rounding and finish marks will be displayed in the order of rounding, after the class designation. Portable gate mark "2" may be physically placed on either side of its prior course board companion mark.

8.2 A green or red bar will be displayed under each rounding mark's placard to designate the side of the boat on which each mark is to be left, starboard (green) or port (red). If not indicated port rounding shall be used.

8.3 The race committee may, but is not obligated to, use VHF CH 72 to announce the course, the intended timing of warning signals, and recalled boat sail number.

9. MARKS

9.1 Marks are described on the attached marks list. Permanent marks are either government marks or yellow BYC buoys. When a portable windward mark is used, its approximate distance and bearing from the starting line will be displayed on the course board.

9.2 Except when indicated as rounding marks, all racing boats shall pass to the east of marks "5", "3", and "E" and to the south of marks "F" and "I". All boats must pass west of the Bully Rock marker.

9.3 Portable marks will be Orange, Yellow, or Red inflatable Tetrahedrons, Cylinders, or Balls. Usages of the portable marks are shown in [Use of Portable Marks](#) diagram.

10. STARTING

10.1 Except for Fall Series, races will be started using RRS 26, with classes starting in the order in which their class signals are displayed on the course board.

10.2 Fall Series races will be started using the Sound Signal Starting System of RRS Appendix U. This changes RRS 26.

10.3 The starting line will be between the staff from which an orange flag is displayed on the signal boat and the course side of the nearby mark.

10.4 Boats whose warning signal has not been made shall avoid the starting area during the starting sequence for other races.

10.5 A boat that does not start within 10 minutes after her starting signal will be scored Did Not Start (DNS) without a hearing. This changes RRS A5.1 and A5.2.

11. FINISHING

11.1 The finishing line will be between the staff from which a blue flag is displayed on a race committee signal boat and the course side of the mark designated as the finish mark.

11.2 If the race committee is absent when a boat finishes, she shall report her finishing time, and her position in relation to nearby boats, to the race committee at the first reasonable opportunity.

12. PENALTY SYSTEM

12.1 RRS Appendix V will apply in its entirety. This alters RRS 44.1.

12.2 All post-race penalties must be requested before the close of protest time for this race regardless of whether a protest was filed. This changes RRS V2(a).

13. TIME LIMITS

13.1 Time limit for series races for Bullseyes, H-12s, Shields, J/80s, and PHRF is 2 hours.

13.2 A boat that finishes later than time limit window after the first boat in her class that sails the course and finishes shall be scored TLE (Time Limit Expired) the same score as DNF without a hearing. The TLE window for PHRF is 45 minutes and 20 minutes for one-design. This changes RRS 35, A5.1 and A5.3.

14. HEARING REQUESTS

14.1 Protests and requests for redress shall be written or filled-in on hearing request forms available in the BYC Protest Box located on the wall to the left of the clubhouse door on the porch and from US Sailing using the provided QR code.

14.2 The form shall be completed, photographed (if on paper) and emailed to protest@beverlyyachtclub.org within two (2) hours from the time the race committee finish boat returns to BYC (the Protest Time Limit).



14.3 Protest hearings are scheduled, for properly filed requests, on Sundays at 1700 for Summer Series races conducted during the most recent week ending Thursday. (For example, if you race on Thursday, June 6, your hearing will be Sunday, June 9. If you raced on Saturday, June 8, your hearing will be on Sunday, June 16.) A scheduled protest may be changed by the Protest Chair by prior notice to all relevant parties.

14.4 A boat requesting redress based on her scores shall do so within seven days of the posting of the scores. This changes RRS 62.2.

14.5 The Protest Committee Chair reserves the right to reschedule a hearing to any Sunday during the summer series to accommodate scheduling conflicts.

15. HANDICAPPING AND SCORING

15.1 The scoring system of Appendix A of the Racing Rules of Sailing (RRS) shall be used except as amended by the *Notice of Race*.

15.2 Course distances for PHRF racing will be computed using the locations of permanent marks shown on the [BYC Racing Marks 2024](#) chart and the GPS locations of portable marks. The length of each leg of the course will be determined by the race committee to the nearest tenth of a nautical mile with 0.05 rounded up.

16. SAFETY

16.1 When code flag "L" is displayed on the race committee signal boat before a warning signal, boats shall check in by sailing past the signal boat on starboard tack and hailing their numbers until acknowledged by the race committee.

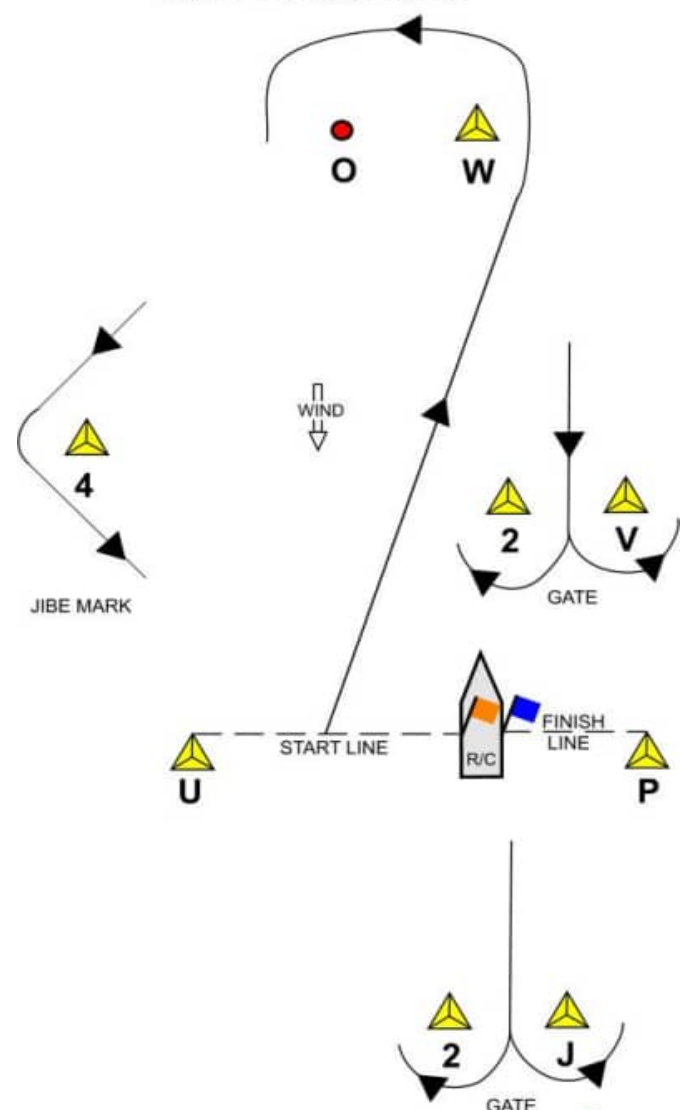
16.2 Every competing boat, with the exception of dinghies, i.e. Optimists and 420's, is required to carry a VHF radio and to monitor VHF radio CH 72 from the preparatory signal and while racing.

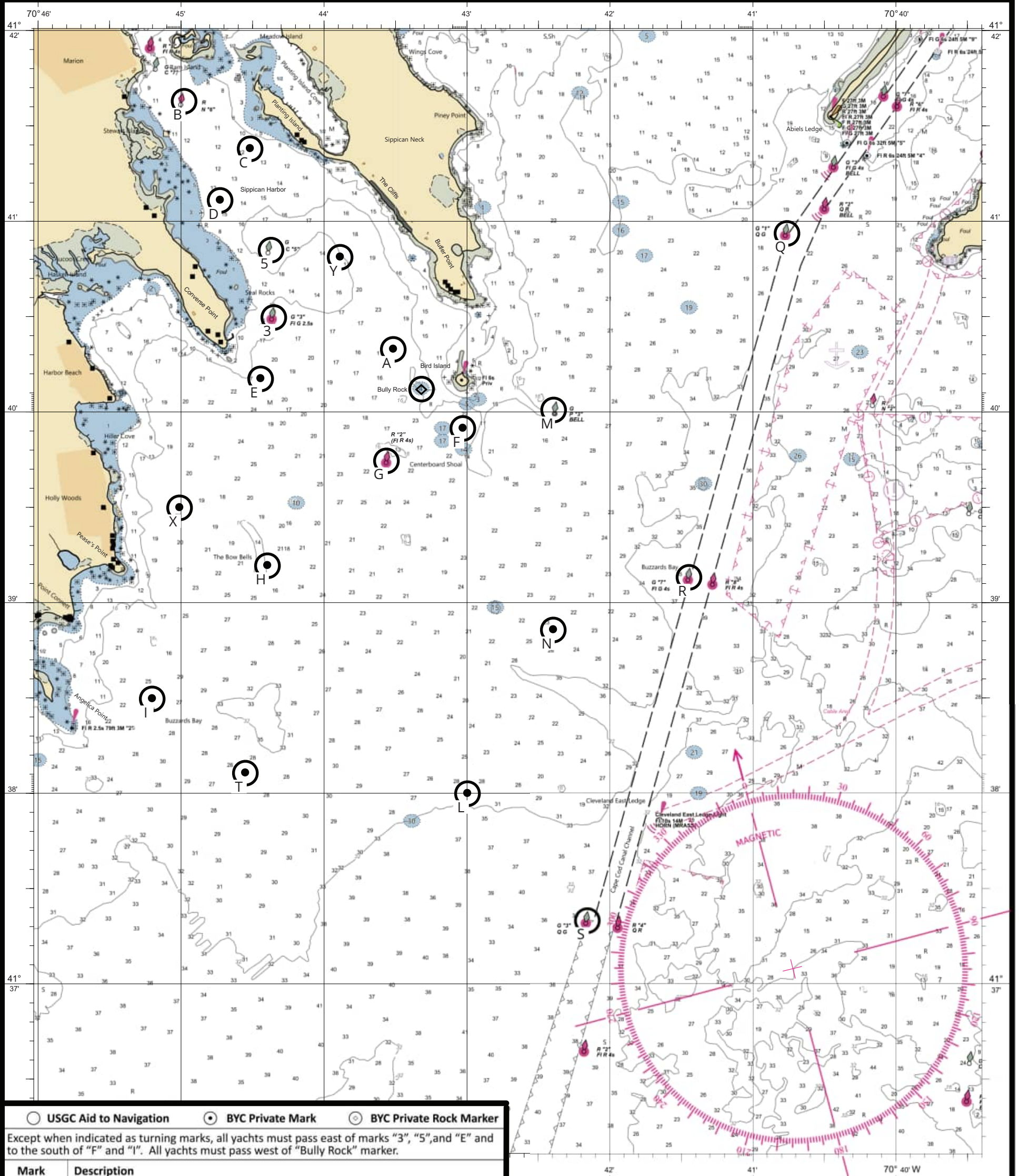
16.3 A boat that retires from a race shall notify the race committee at the first reasonable opportunity.

16.4 [DP] In accordance with RRS 40.2, RRS 40.1 (Personal Flotation Device) applies.

16.5 When code flag "V" is displayed not later than the warning signal or at a mark rounding of the race no spinnakers for the balance of the race.

Use of Portable Marks





○ USGC Aid to Navigation
 ● BYC Private Mark
 ◉ BYC Private Rock Marker

Except when indicated as turning marks, all yachts must pass east of marks "3", "5", and "E" and to the south of "F" and "I". All yachts must pass west of "Bully Rock" marker.

Mark	Description
3	Sippican Harbor Lighted Green Buoy "3" (FI G 2.5s) East of Converse Point
5	Sippican Harbor Green Can "5" East of Seal Rocks
8	Weepecket Rock Lighted Red Gong "8" (FI R 5s) (off chart)
A	BYC Yellow Can "A" West of Butler Point
B	Sippican Harbor Red Nun "6" South of Ram Island
C	BYC Yellow Can "C" West of Planting Island
D	BYC Yellow Can "D" Northeast of Seal Rocks
E	BYC Yellow Can "E" Southeast of Converse Point
F	BYC Yellow Can "F" South of Bird Island
G	Sippican Harbor Lighted Red Buoy "2" (FI R 4s) Centerboard Shoal, SW of Bird Island
H	BYC Yellow Can "H" at The Bow Bells, East of Point Connett, Mattapoisett
I	BYC Yellow Can "I" East of Angelica Point
K	West Island Red Bell "2SE" (off chart)
L	BYC Yellow Can "L" West of Cleveland Ledge Light
M	Bird Island Green Bell "3" Southeast of Bird Island
N	BYC Yellow Can "N" Southeast of Bird Island
Q	Hog Island Channel Lighted Green Buoy "1" (Q G) Southwest of Abiels Ledge
R	Cleveland Ledge Channel Lighted Green Gong "7" (FI G 4s) NE of Cleveland Light
S	Cleveland Ledge Channel Lighted Green Buoy "3" (Q G) SW of Cleveland Light
T	BYC Yellow Can "T" Southeast of Angelica Point
X	BYC Yellow Can "X" East of Pease's Point
Y	BYC Yellow Can "Y" Southwest of the Cliffs
Z	Buzzards Bay Lighted Red Gong "10" (FI R) Southeast of West Island (off chart)
Bully Rock	BYC White Can with orange diamond two sides and two orange horizontal bands

Portable Marks

Mark	Description
2	Gate Mark companion to prior posted Mark (see Red/Green bands for side placement)
4	Turning Jibe Mark used with a Triangle Course
J	Turning Mark to Leeward of Start/Finish Line
O	Offset Turning Mark near Windward Turning Mark
P	Alternate Finish Line Pin directly on opposite side of Signal Boat from Starting Line
U	Pin End of Start/Finish Line to Port of Signal Boat
V	Turning Mark a short distance to Windward of Start/Finish Line
W	Windward Turning Mark at bearing and distance posted on Signal Boat

BYC Class Flags



PHRF 1



PHRF 2



PHRF 3



Bullseye



H-12



Shields



J/80