



THE MARIN YACHT CLUB

JOHN SAMUELS CAPTAIN FAST RACE

April 21, 2024

SAILING INSTRUCTIONS

Organizing Authority: The Marin Yacht Club, San Rafael, California

1 RULES

- 1.1 The regatta will be governed by the 'rules' as defined in *The Racing Rules of Sailing* (RRS).
- 1.2 Boats shall carry all safety and emergency equipment required by the YRA (for in the Bay races) and the US Coast Guard, including running lights. The Race Committee may file a protest against any boat observed in violation of these requirements.
- 1.3 Rule 40 is changed as follows: **All** competitors shall wear personal flotation devices while racing, except briefly while changing or adjusting clothing or personal equipment.

2 NOTICES TO COMPETITORS

Notices to competitors will be emailed to all competitors. The NOR, SIs, and amendments thereto will be emailed to all competitors.

3 CHANGES TO SAILING INSTRUCTIONS

Any changes to the Sailing Instructions will be made by 1700 hours on April 19th and emailed to all competitors.

4 SCHEDULE

- 4.1 Starting times will be emailed to all competitors by 1700 April 19th.
- 4.2 Skippers' Meeting will be held at 1130 at the picnic tables by the crane.
- 4.3 On Sunday, April 21st, the first warning signal will be at **1255** with the first start at **1300**. Subsequent starts will be at the times posted in Appendix B. The official race clock will be the time represented on cell phones.

5 HANDICAPS

Handicaps will be developed by the MYC Race Committee as follows:

- a. Boats which have a current NCPHRF certificate or BAMA rating shall receive that rating. Multihulls will be scored separately from monohulls.
- b. One-design boats shall receive their one-design class NCPHRF base rating.
- c. All other boats will receive NCPHRF ratings assigned by the Race Committee. Assigned ratings shall not be subject to redress.

6 CLASSES AND CLASS FLAGS

There will be one class: Non-spinnaker. No class flags will be flown.

7 THE COURSE

The course will be one of the seven courses described in the Sailing Instructions. The course will be determined from the conditions on the day of the race and announced by the Race Committee at or prior to the skipper meeting.

8 THE START

8.1 The starting line is a line from a Race Committee Flag on the Race Committee Boat to an inflatable mark.

8.2 The race will be started using rule 26, except there will be *no visual signals*. The start times will be emailed to all competitors by 1700 on April 19th.

8.3 Boats shall start in accordance with individual handicaps beginning at 1300 hours. The Race Committee may provide your starting time upon request prior to 1255. However, it is each boat's responsibility to know their start time and start at the proper time. A standard five (5) minute start sequence shall be observed with an **audible signal and VHF notification only**.

1255	Warning Signal
1256	Preparatory Signal
1259	One minute Warning Signal
1300	Start Signal

A Race Committee *will attempt* to provide a signal for each subsequent start.

8.4 Boats observed to be over early will be signaled by 2 short horns and required to restart following rule 29.1.

8.5 Boats who are not starting or who are restarting should keep clear of the start line and the boats starting at their scheduled time.

8.6 Propulsion may be used **until 1 minute before each boat's starting time**.

9 THE FINISH

The finishing line will be the same as the starting line.

10 TIME LIMIT

10.1 The time limit for the race shall be 1600 hours, Sunday, April 21st. Boats failing to finish by this time will be scored DNF.

10.2 Boats not completing the course shall report to the Race Committee as soon as possible and no later than 1600 hours on April 21st. The Race Committee will monitor VHF channel 71.

11 PROTESTS

11.1 Protests shall be written on US Sailing Protest forms and lodged no later than 1700 hours on April 21st.

11.2 Protests will be heard, in the approximate order of submission, at The Marin Yacht Club, as soon as practical at a time and date to be determined.

12 SCORING

Starting times are calculated based on handicaps; therefore, finish places will be determined by the order in which the boats cross the finishing line within the time limit.

13 RADIO COMMUNICATION

- 13.1 The race committee may use VHF USA channel 71 to communicate information about the races.
- 13.2 Except in an emergency or retiring from a race, a boat that is racing shall not make voice or data transmissions and shall not receive voice or data communications that is not available to all boats.

14 TROPHIES

Trophies will be awarded on the Marin Yacht Club bar approximately an hour after the last boat returns to the Marin Yacht Club harbor.

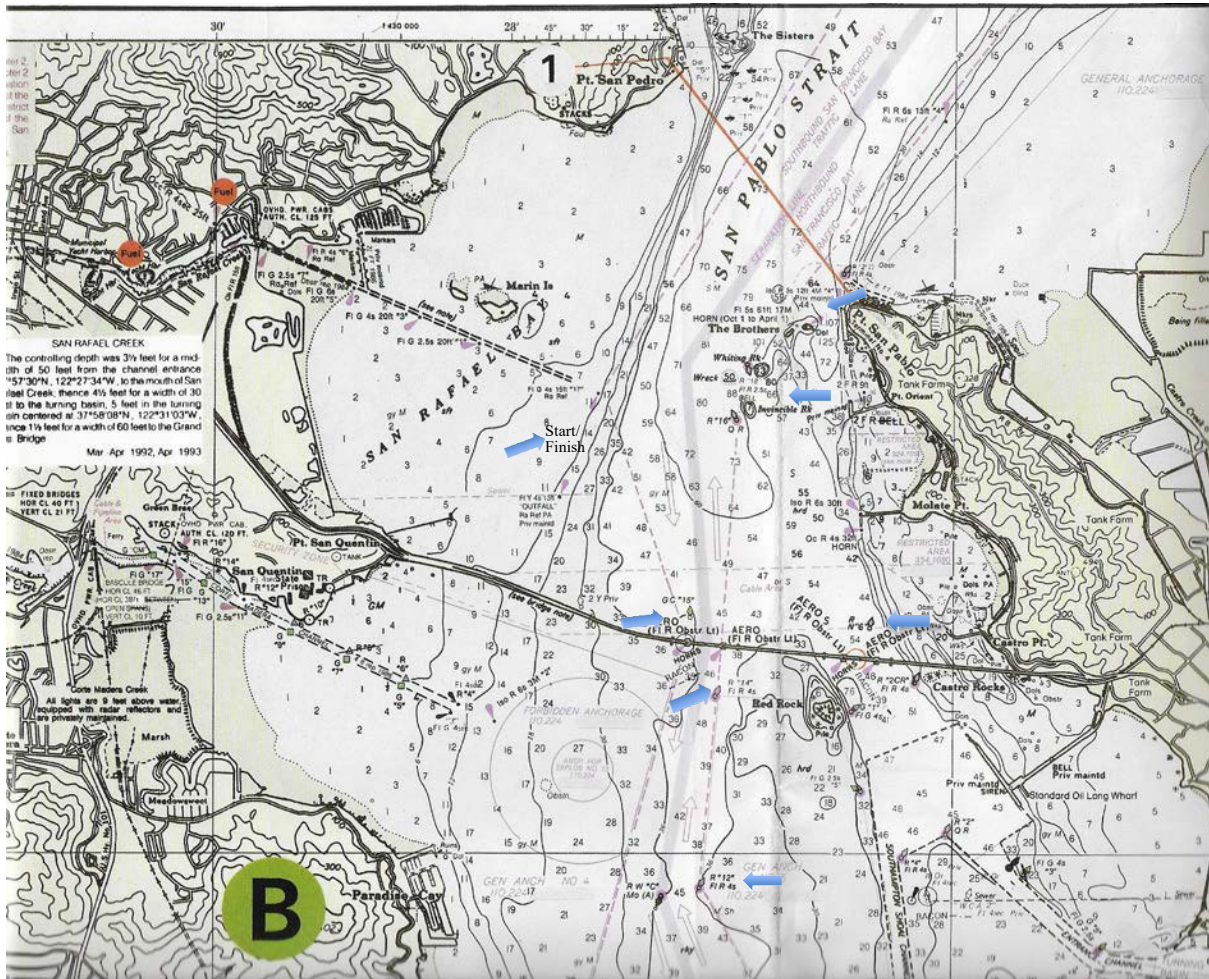
15 DISCLAIMER OF LIABILITY

Competitors participate in the regatta entirely at their own risk. See rule 4, Decision to Race. The organizing authority will not accept any liability for material damage or personal injury or death, sustained in conjunction with, prior to, during or after the regatta.

16 FURTHER INFORMATION

Ellen Clark, ellenplark@comcast.net 415-509-6863

APPENDIX A: COURSES AND MARKS



- Course 1 (4.64 NM): ST, G15-P, R6-P, R18-P, FN**
- Course 2 (5.40 NM): ST, G15-P, R18-P, G15-S, FN**
- Course 3 (6.57 NM): ST, G15-P, R6-P, R18-P, G15-S, FN**
- Course 4 (6.83 NM): ST, G15-P, R6-P, R16-P, G15-P, R18-P, FN**
- Course 5 (6.87 NM): ST, G15-P, EBI, G15-P, R18-P, FN**
- Course 6 (7.19 NM): ST, R14-P, R6-P, R16-P, G15-P, R18-P, FN**
- Course 7 (8.88 NM): ST, R12-P, R6-P, R16-P, G15-P, R18-P, FN**

Marks:

- ST – Start Line as defined (South and East of Green Channel Marker 17 “Birdcage”)
- G15 – Green Buoy 15 (North of West Tower of Richmond-San Rafael Bridge)
- R6 – Red Buoy 6 (North of East Tower of Richmond-San Rafael Bridge)
- R12 – Red Buoy 12 (South of the Richmond-San Rafael Bridge)
- R14 – Red Buoy 14 (South of East Tower of Richmond-San Rafael Bridge)
- R16 – Red Buoy 16 (SW of Invincible Rock)
- R18 – Red Buoy 18 (NW of Whiting Rock)
- EBI – East Brothers Island
- FN – Finish Line as defined (South and East of Green Channel Marker 17 “Birdcage”)

APPENDIX B: COMPETITORS AND START TIMES

Competitors				Course 1 - 4.64 NM	Course 2 - 5.40 NM	Course 3 - 6.57 NM	Course 4 - 6.83 NM	Course 5 - 6.87 NM	Course 6- 7.19 NM	Course 7- 8.88 NM
2669	Bethencourt	Second Draft	205	13:00:00	13:00:00	13:00:00	13:00:00	13:00:00	13:00:00	13:00:00
Is 28	Larzul	Petit Bateau	192	13:01:00	13:01:10	13:01:18	13:01:29	13:01:29	13:01:34	13:01:55
143	Descalso	Sobrante	177	13:02:10	13:02:31	13:02:48	13:03:11	13:03:12	13:03:21	13:04:08
7507	Clayton	Gypsy Lady	174	13:02:24	13:02:47	13:03:06	13:03:32	13:03:33	13:03:43	13:04:35
1934	LaRose	Tilly Whim	156	13:03:47	13:04:25	13:04:54	13:05:35	13:05:36	13:05:52	13:07:15
H35	Clark	Charisma	138	13:05:11	13:06:02	13:06:42	13:07:37	13:07:40	13:08:02	13:09:55
45	Collins	Bella	120	13:06:34	13:07:39	13:08:30	13:09:40	13:09:44	13:10:11	13:12:34
	Parker	Sombra del Mar	78	13:09:49	13:11:26	13:12:42	13:14:27	13:14:32	13:15:13	13:18:47