



Sailing Instruction

ALYC C's the Day Race and Seminar

Saturday April 27th

1. RULES

1.1 The series will be governed by the 2021-2024 Racing Rules of Sailing (*RRS*).

2. CHANGES TO SAILING INSTRUCTIONS

2.1 Any change to the Sailing Instructions (SI's) will be posted before 9:00 a.m. PDT on the day it will take effect, Except that any change to the schedule of races will be posted by 8:00 p.m. PDT on the day before it will take effect.

2.2 The Race Committee (R/C) may issue verbal changes to the SI' when the "L" flag (Come Within Hail) is displayed.

3. SIGNALS MADE ASHORE

4.1 Signals made ashore will be displayed from the flagpole located at ALYC's Marina.

4.2 If a postponement is signaled ashore, the warning signal will be made not less than one hour after flag AP is lowered.

5. SCHEDULE OF RACES

5.1 Two races are scheduled.

5.2 The scheduled warning signal for the first race will be 1 p.m. PDT.

6. RACING AREA

6.1 The racing area is in Newport Harbor

6.2 The start/finish line is in the "5 points area".

7. COURSES AND MARKS

7.1 The courses will be designated on the Committee Boat's White Board with letters or numbers corresponding to established Newport Harbor Racing Marks (attachment A) and are displayed in their order to be taken.

7.2 All marks shall be rounded to port unless indicated by a small "s" after the mark identification on the White Board.

7.3 An orange tetrahedron mark windward of the start line is designated as "F".

8. STARTING

8.1 A white flag with the black letter "C" will be used to identify the Class Flag for starting.

8.2 Approximately one minute before the first warning signal the R/C will sound

an attention signal consisting of multiple horns or whistle blasts.

8.3 Races will be started using the following visual and sound signals:

Class Flag “C”/ up 3:00 before the start one horn

Preparatory Flag “P” up 2:00 before the start one horn

Preparatory Flag “P” down 1:00 before the start one long horn

Class Flag “C” down :00 start one horn

This modifies Racing Rule of Sailing (RRS) 26

8.4 The Start line is between an Orange flag on a staff affixed to an anchored float and an orange flag on the R/C boat at the starboard end of the line.

9. FINISHING

9.1 The Finish line is between an Orange flag on a staff affixed to an anchored float and a Blue flag on the R/C boat at the port end of the line.

9.2 A boat that withdraws, retires or abandons a race must notify the R/C.

10. PENALTY SYSTEM

RRS 44.1 is changed from a two-turn penalty to a one-turn penalty

11. PROTEST

11.1 Any boat protesting **MUST** continue to fly the protest flag when crossing the finish line and indicate to the R/C what boat they are protesting, this modifies *RRS* 61.

11.2 Protest forms will be available through the R/C office or Regatta Network

11.3 Completed protest forms shall be delivered to the Principle Race Officer (PRO) within the protest time limit.

11.4 The protest time limit is 30 minutes after the committee boat arrives at the dock.

11.5 The parties will be advised under *RRS* 63.2 of when and where the protest will be heard, which may be on a date and time other than immediately following the close of the Protest Time Limit.

12. TIME LIMITS

The time limit for a boat is 30 minute after the first boat in its class finishes. Any boat finishing after that time will be scored DNF. This changes *RRS* 35

13. SCORING

13.1 Boats will be scored according to their finishing position.

13.2 The results of both races will be combined for the daily score.

14. PRIZES

14.1 Prizes will be presented after the races in the Hut at the American Legion.

14.2 Prizes will be awarded for first through third place in each race.

14.3 One prize will be awarded for Overall winner of both races.

15. Seminar and Race schedule

10:30 Meet for Donuts and Coffee at the ALYC Hut

11:00 Seminar on the Racing Rules of Sailing

12:00 Meeting concludes and sailors ready their boats

1:00 Racing starts

3:00 Racing ends

3:30 - 4:00 Meet at the American Legion Hut for Food, Drinks and Prizes

16. RISK STATEMENT

Competitors participate in this series entirely at their own risk (see Rule 3 - Decision to Race).

The organizing authority does not accept any liability for material damage or personal injury or death sustained in conjunction with or prior to, during or after the series.

17. Docking

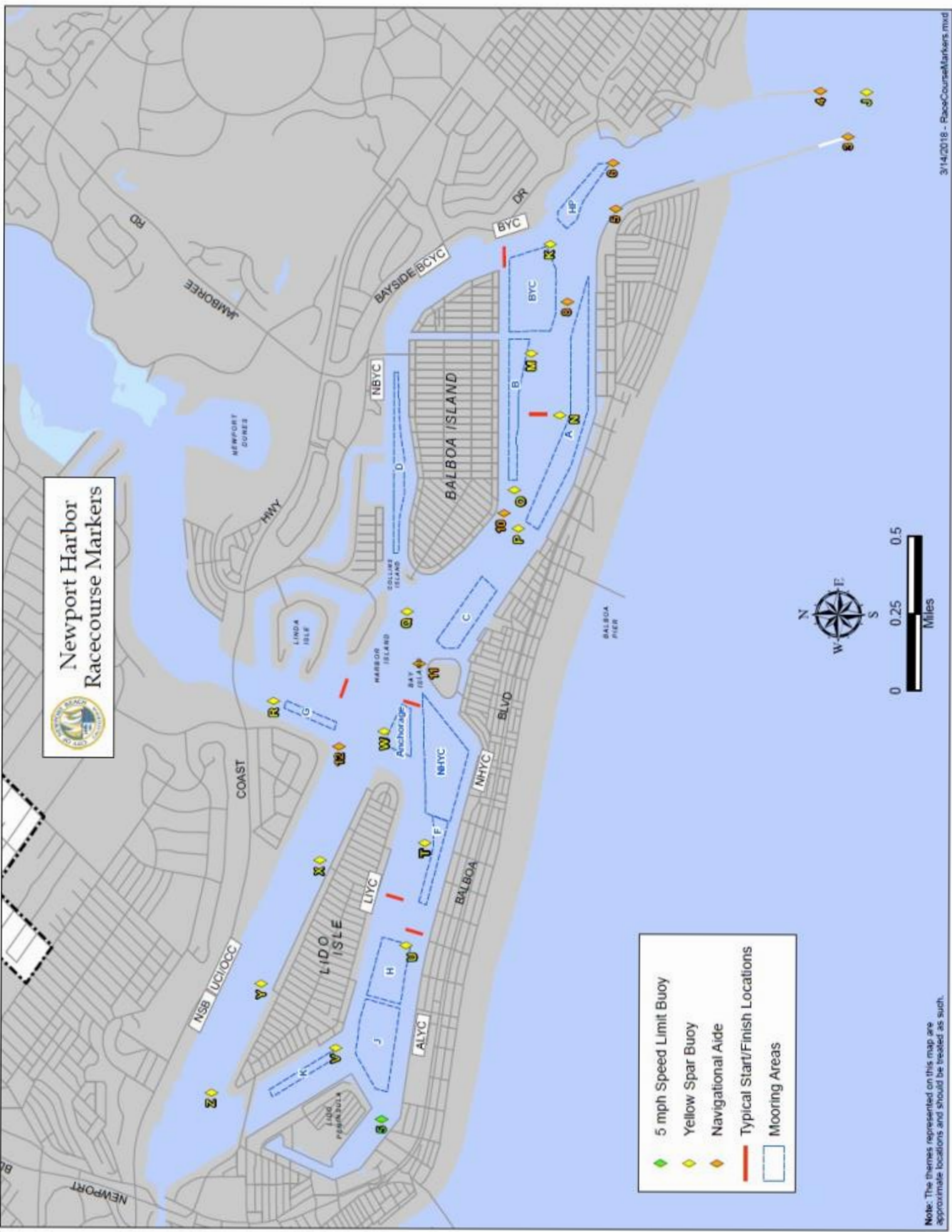
At the American Legion Yacht Club, dock space is available but limited. We encourage you to drive to the American Legion for the Seminar (parking not provided). If you are a distance away and will not have time to ready your boat please contact the PRO to arrange dock space.

For any question, contact

PRO Scott Barnes (714) 612-7830

ALYC Race Committee

race@alyc.com



Newport Harbor Racecourse Markers

- ◆ 5 mph Speed Limit Buoy
- ◆ Yellow Spar Buoy
- ◆ Navigational Aide
- Typical Start/Finish Locations
- Mooring Areas



Note: The themes represented on this map are approximate locations and should be treated as such.