



Waikiki Yacht Club
1599 Ala Moana Blvd
Honolulu, Hawaii, 96814
808.995.4405 | regatta@waikikiyachtclub.com

2024 Sir Thomas Lipton Challenge Cup One April 13 & 14, 2024

SAILING INSTRUCTIONS

Waikiki Yacht Club (WYC) is the organizing authority.

1. RULES:

1.1 The regatta will be governed by the rules as defined in *The Racing Rules of Sailing (RRS)*, the prescriptions of US SAILING, the Hawaii Maritime Center Historical Trophies Advisory Board (HTAB) Notice of Challenge and the current Authorization to Award.

2. ADVERTISING: Advertising will not be restricted.

3. NOTICES TO COMPETITORS will be posted on the official notice board located at the Waikiki Yacht Club clubhouse.

4. CHANGES TO SAILING INSTRUCTIONS:

4.1 Any changes to the sailing instructions will be posted at least three hours prior to the first start on the date it takes effect except that any change to the schedule of races will be posted by 1800 on the day before it takes effect.

4.2 The Race Committee [RC] may change the course at any time prior to the warning signal.

5. SIGNALS MADE ASHORE will be displayed on the flag mast of Waikiki Yacht Club.

6. SCHEDULE OF RACES:

6.1 First Warning (1st day) 09:55 AM, Saturday, April 13, 2024.

6.2 First Warning (2nd day) 09:55 AM, Sunday April 14, 2024.

6.3 The warning signal for subsequent races will be given shortly after the last boat finishes the preceding race.

6.4 Three races are planned for the first day and two races are planned for the second day.

7. CLASS FLAGS: The Warning Flag (aka Class Flag) will be Red, any change may be announced on the water.

8. RACING AREAS: The racing areas will either be the coastal waters of Maunalua Bay between Diamond Head and Koko Head or Mamala Bay between Diamond Head and Honolulu Harbor H Buoy. A map of the area is provided below.

9. THE START/FINISH LINES & COURSES:

- 9.1 Start Line:** Start Line is between an orange flag on the Race Committee signal boat at the Starboard end of the line and an orange or yellow buoy (Mark 2) at the Port end of the start line. A yellow or orange buoy may be substituted for the start line Race Committee boat.
- 9.2 Finish Line:** The Finish Line will be between a yellow or orange buoy at the Starboard end (Mark 2) of the line and an orange flag on the Race Committee signal boat at the Port end of the line. A yellow or orange buoy may be substituted for the finish line Race Committee boat.
- 9.3 Windward Mark:** The Windward Mark (Mark 1) will be a yellow or orange buoy located approximately 1.5 to 2.0 NM to windward of Mark 2.
- 9.4 The Course:** leaving all marks to port, leg distances approximately 1.5 to 2.0 NM. There will be only one course: Windward/Leeward/Windward/Leeward, as indicated by signal flag 2 on RC Boat: Start - Mark 1 to port - Mark 2 to port - Mark 1 to port - Finish. The approximate distance is 6 - 8 NM. The approximate magnetic course of the mark to windward may be indicated by the RC.

10. THE STARTS:

- 10.1** Prior to their warning signal boats shall check in by approaching the RC boat on starboard tack and being acknowledged or by hailing RC boat and being acknowledged on VHF channel 68
- 10.2** All races will follow the starting sequence per RRS Rule 26. An alert consisting of several short horn blast may be sounded 1 minute prior to the start sequence. The alert may also be broadcast over channel 68.
- 10.3** Recalls will be signaled in accord with Rule 29. The Race Committee may attempt to hail premature starters on VHF channel 68 but it is the responsibility of each yacht to start properly. A failure of the RC to hail a yacht shall not be grounds for protest or redress.
- 10.4** A boat that does not start within Ten minutes after her starting signal will be scored Did Not Start (DNS) without a hearing. This changes RRS A5.1 and A5.2

11. PROTESTS and HEARINGS:

- 11.1** A yacht intending to protest shall notify WYC Committee by hail or on VHF channel 68 promptly after finishing that race.
- 11.2** Protest forms will be available at the WYC bulletin board. Protests shall be filed in writing within one hour from the time that the Race Committee boat docks.
- 11.3** Protests will be heard as soon as possible after the filing deadline. Notices will be posted to inform competitors of hearings in which they are parties or named as witnesses. Hearings will be held in the protest room (to be designated) at WYC. If a protest involves any of the first three places in a class, the trophy presentation will be delayed until all protests have been resolved.

12. SAFETY REGULATIONS:

- 12.1** Competitors should be aware of US Safety Equipment Requirements (SER) that apply to Monohulls SER Nearshore. <https://www.ussailing.org/wp-content/uploads/2023/03/Monohull-SER-2023.0-Nearshore.pdf>
- 12.2** A boat withdrawing from a race shall promptly notify the Race Committee on VHF channel 68.

13. SCORING:

- 13.1** Results from this regatta will determine the winner of the Sir Thomas Lipton Challenge Cup One.
- 13.2** The Low Point Scoring System, Appendix A4 will apply, except that no race scores will be excluded. This changes RRS A2.

14. TIME LIMITS

- 14.1** The Mark 1 Time Limit, (see RRS 35), and the Finishing Window are shown in the table below in minutes.

Mark 1 Time Limit	Race Time Limit	Finishing Window
40 minutes	120 minutes	30 minutes

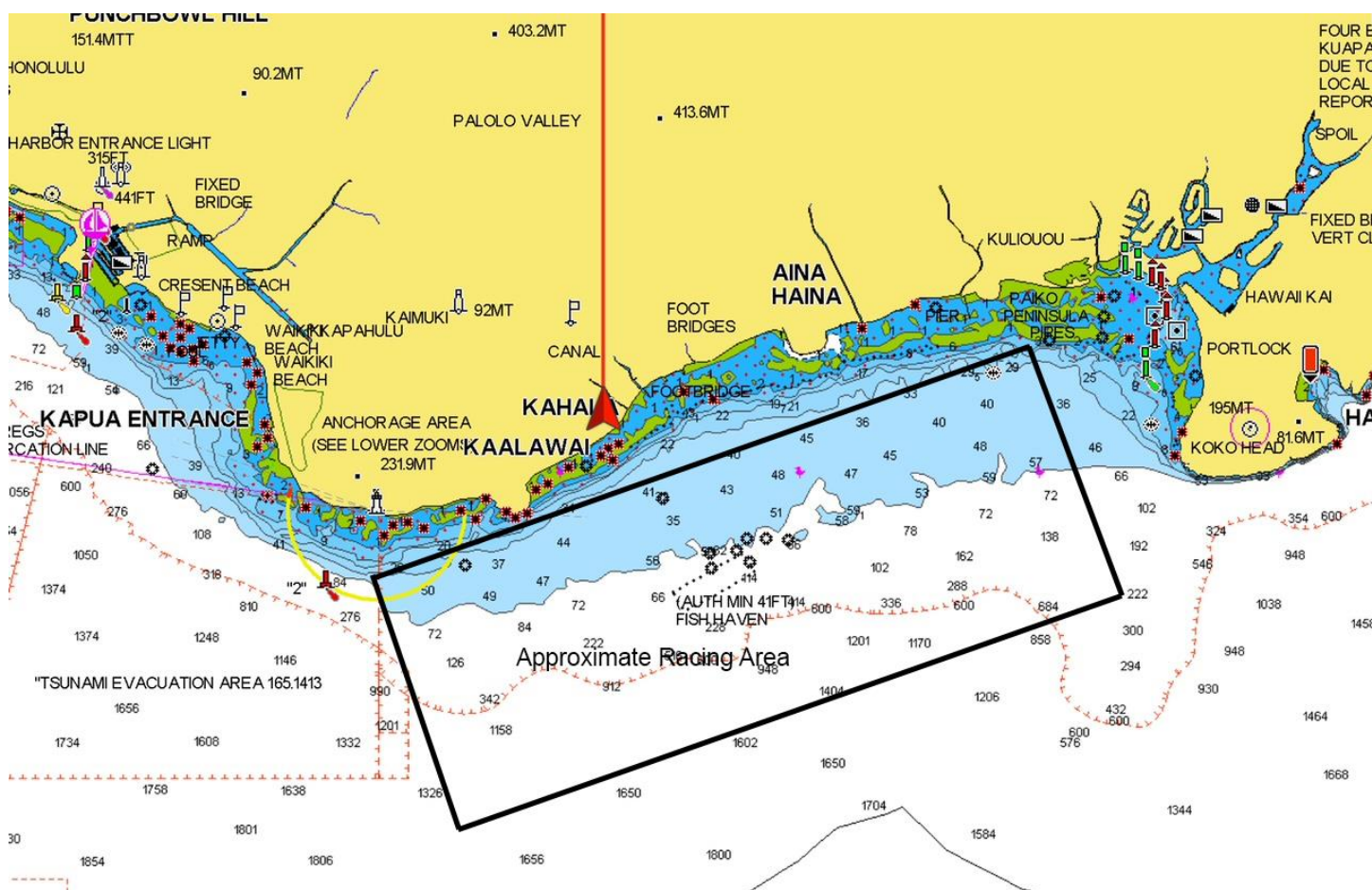
14.2 If no boat has passed the first mark within the Mark 1 Time Limit the race will be abandoned.

If no boat finishes within the Race Time Limit the race will be abandoned.

14.3 The Finishing Window is the time for boats to finish after the first boat sails the course and finishes. Boats failing to finish within the Finishing Window, and not subsequently retiring, penalized or given redress, will be scored Time Limit Expired (TLE) without a hearing. A boat scored TLE shall be scored points for the finishing place plus one point scored by the last boat that finished within the Finishing Window.

FURTHER INFORMATION: Contact Gary Evoniuk – geevoniuk@gmail.com

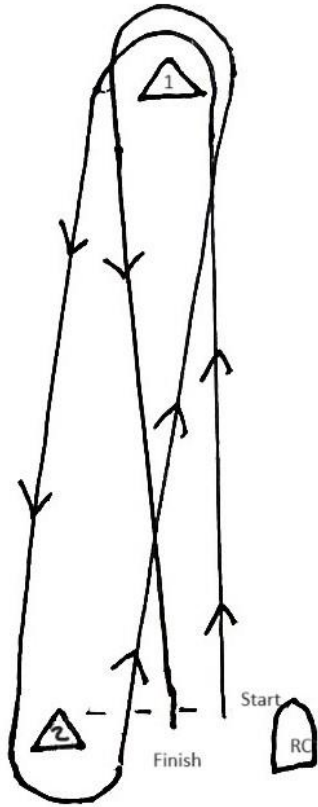
Race Venue – Maunaloa Bay



Alternate Race Venue – Mamala Bay



Course Diagram



Course 2 - Windward/Leeward - 2 laps



Pennant 2 ↑ • • ↓ •