

MANASQUAN RIVER YACHT CLUB

40° 06' 13.56" N 74° 03' 28.81" W



NOTICE OF RACE

ILCA DISTRICT-10 CHAMPIONSHIPS

June 15-16, 2024

Organizing Authority:

ILCA District 10 and

Manasquan River Yacht Club (MRYC)

405 Riverview Lane, Brielle, NJ 08730

1. RULES

- 1.1. The Organizing Authority will govern the regatta by the rules as defined in the 2021/2024 edition of *The Racing Rules of Sailing* (RRS), including US Sailing Prescriptions, rules of the International Laser Class Association Rules (ILCA), this Notice of Race, and the Sailing Instructions.
- 1.2. Life jackets/PFD/Buoyancy aids shall be worn on the water except briefly while changing clothing, failure to do so may result in DSQ. Flag Y shall not be displayed. This changes RRS 40. 1.3. Class legal Laser or ILCA sails are required.

2. RACING AREA

- 2.1 Races will be sailed in the **Atlantic Ocean**, approx. 1 mile offshore in the vicinity of the Manasquan Inlet. See Appendix A
- 2.2 The alternate sailing area will be inshore in the **Manasquan River**. See Appendix B
- 2.3 The PRO will decide on the sailing area, this discussion will not be grounds for redress.
- 2.3 Fleets may be split between sailing areas, this discussion will not be grounds for redress.

3. SAFETY AND TOWING

- 3.1 **Every vessel shall carry a 25-foot tow line that is not a halyard nor mainsheet and is minimum of 1/4" in. diameter.**
- 3.2 Transit to and from the Ocean Racing Area will require a mandatory tow.
- 3.3. Tows will be provided for all boats unless a designated Support Boat is registered in advance of the regatta.
- 3.4 Competitors will check in with race committee on land before the tow and then again on the water prior to the first start each day.
- 3.5 Competitors retiring from a race shall notify the race committee at first reasonable opportunity.
- 3.6 Competitors may not leave the Ocean Racing Area without a tow boat.
- 3.7 OA reserves the right to limit the number of registrations for safety and tow boat availability.

4. ELIGIBILITY

- 4.1. All competitors must be current members of ILCA North America or their equivalent national Laser Class Association. Non-members may join the class at <https://laser.org/about-joining>
- 4.2. Competitors under the age of 18, shall have the responsible adult/ parent(s) /guardian(s) complete a waiver and be available on site during the event.
- 4.3. It is the responsibility solely of the responsible adult/parent(s)/guardian(s) of the competitors who are under the age of 18 at the start of the competition to decide of the competitor should sail in the weather and sea conditions that might arise during the event.

5. ENTRY

- 5.1. Entry fee is \$125 per competitor through May 31, 2024 and will include a shirt at the regatta. Thereafter the entry fee is \$150.
- 5.2. Entry fee includes breakfast, snacks, and post-race food/refreshments both days.
- 5.3. Registration may be found here:
<https://www.regattanetwork.com/event/28099>

6. BOATS

- 6.1. The event is open to class legal boats with ILCA 4/6/7 or corresponding Laser rigs.

7. SCHEDULE OF EVENTS

7.1

Friday, June 14 th	1300	Venue Open to Competitors
Saturday, June 15 th	930-1100	Regatta Registration and Boat set up,
	1100	Competitors Meeting: On Land Check In and Tow Coordination
	1245	First Warning
	1700	No Starts After
Sunday, June 16 th	1030	Competitors meeting: On Land Check In and Tow Coordination
	1130	First Warning
	1530	No Starts After
	ASAP	Results presentation and Refreshments

- 7.2 Changes to schedule will be on the Notice Board by 1800 the day before changes go into effect.

7. SAILING INSTRUCTIONS

Sailing Instructions will be available online on or before 1200 hours June 13th.

8. SCORING

- 8.1. The Low Point Scoring System, Appendix A, will apply.
- 8.2. Seven (7) races are scheduled; one (1) completed races will constitute a regatta.
- 8.3. If Four (4) or more races are scored, the worst score shall be excluded. This modifies

9. COACHING AND SUPPORT BOATS

- 9.1. All Coaching and Support Boats must be registered by June 7, 2024. All support boats will receive an assigned storage spot and trailer parking spot. At least 2 people per boat. Register here: <https://www.regattanetwork.com/event/28099>
- 9.2. Any support boats or trailers stored on site without written approval are subject to removal at the owner's expense.
- 9.3. Coach and Support Boats are required to monitor the course channel on a VHF radio and be available to assist with safety when requested. The specific channel will be stated in the sailing instructions. Code flag V will not be displayed. This changes RRS 37.
- 9.4. All coach and support boats must check in and identify themselves to the Race Committee in the Ocean Racing Area.
- 9.5. Coach and Support Boats must remain 100 yards away from the race course.
- 9.6. On the water coaching is permitted between races.

10. PRIZES AND AWARDS

- 10.1. First, Second, Third Place Prizes awarded for ILCA 4, 6, and 7 Classes.
- 10.2. The District 10 Championship perpetual award will be presented to the winner of each fleet.
- 10.3. Finishes will be reported to ILCA-NA and Gran Prix points awarded to class members.

11. INSURANCE

11.1 Each participating boat shall be insured with valid third-party liability insurance with a minimum coverage of the policy limit of their homeowner's insurance policy or the equivalent thereof. Each participating boat is recommended to be insured with valid third-party liability insurance with a minimum cover of \$300,000 per incident or the equivalent.

12. DISCLAIMER OF LIABILITY

12.1 Sailing is an activity that has an inherent risk of damage and injury. Competitors in this event are participating entirely at their own risk. See RRS 3, Decision to Race. The race organizers (organizing authority, race committee, protest committee, host club, sponsors, or any other organization or official) will not be responsible for damage to any boat or other property or the injury to any competitor, including death, sustained as a result of participation in this event. By participating in this event, each competitor agrees to release the race organizers from any and all liability associated with such competitor's participation in this event to the fullest extent permitted by law.

13. WATER BOTTLES - No single use water bottles will be provided. A filtered-water dispenser will be available for refillable containers.

14. REGATTA CONTACTS

Manasquan River Yacht Club- (732) 528-6792

405 Riverview Lane, Brielle, NJ 08730

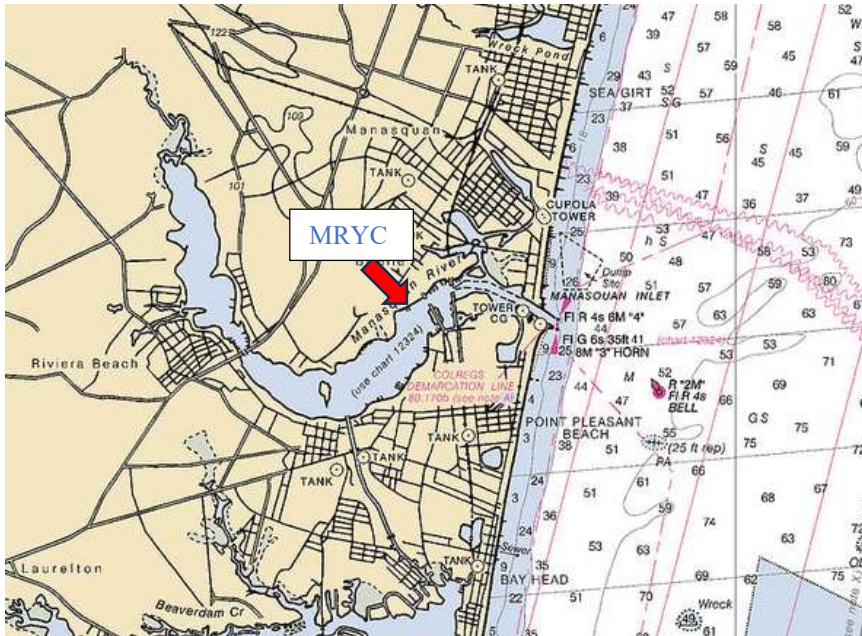
Website: MRYC.ORG

Regatta Chair – Keith Kernan

PRO – Ned Thomson

Appendix A: Ocean Course

Atlantic Ocean approx. 1 mile offshore in the vicinity of the Manasquan Inlet, either North or South well clear of the Bell Buoy. Course set to conditions.



Appendix B: River Course

Manasquan River near the Yacht Club between the Route 35 and Route 70 Bridges.

