



Comet Class Yacht Racing Association
International Championship Regatta
October 11, 12, 13, 2024
Organizing Authority: Corsica River Yacht Club

Sailing Instructions

1. **Rules:** The regatta will be governed by the Racing Rules of Sailing (RRS) and the bylaws and appendices of the Comet Class yacht association (CCYRC),.
2. **Eligibility:** This event is open to CCYRA members in good standing. Boats failing to meet CCYRA equipment requirements may be subject to protest. All boats shall be skippered by a CCYRA member in good standing. Eligible yachts shall have an official measurement on file. All sails shall meet class requirements and have CCYRA Sail Tax Labels.
3. **Notices to Competitors:** Notices to competitors will be posted on the official notice board located on the bulletin board at the pavilion.
4. **Changes to the Sailing Instructions:** Changes to the Sailing Instructions will be posted on the club bulletin board by 9:00 AM each day.
5. **Signals Made Ashore:** Signals made ashore will be displayed from the mast of the race committee building.
6. **Schedule of Races:** Note: Racing schedule is weather dependent. Schedule of races is as follows:

	Friday 10/8/21	Saturday 10/9/21	Sunday 10/10/21
Registration	8:00 – 9:30 AM		
Competitor's Meeting	9:30	9:30, if needed	
Harbor gun	10:00	10:00	10:00
1 st Warning Signal	11:00	11:00	11:00

7. **Number of Races**

The warning signal for the first race on each day is scheduled as indicated above.

Races will be run back-to-back each day.

8. **Courses**

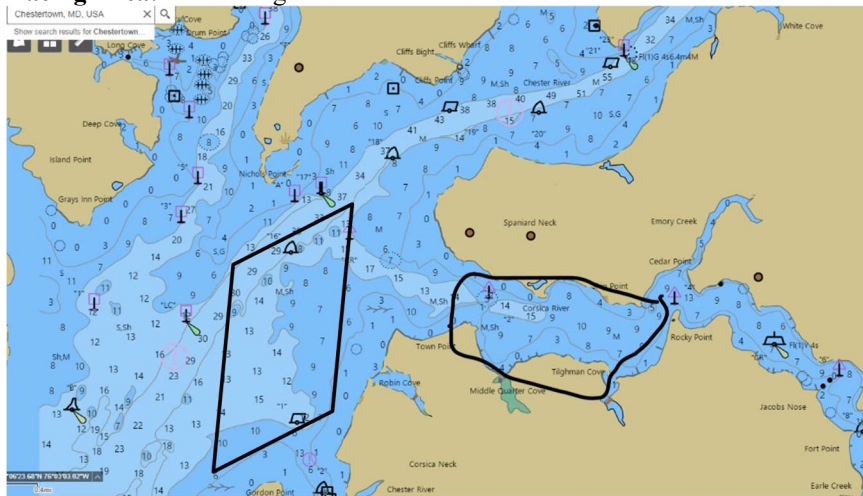
TW course designation – Olympic Course: See figure TW. All marks will be rounded to port.

WA course designation – Windward-Leeward: See figure WA. There will be an offset mark. All marks will be rounded to port.

LA course designation – Windward-Leeward: See figure LA. There will be an offset mark. All marks will be rounded to port.

Off set mark 1a is optional.

9. **Racing Area:** The racing area will be in the Corsica River or the Chester River off the mouth of the Corsica River.



10. **Marks:** Rounding marks will be inflatable yellow inflatable cylinder. The start/finish marks will be an orange cylinder.
11. **The Start:** Races will be started in accordance with the standard procedures of Rule 26
The starting line will be between a staff displaying a yellow flag from the committee boat and an orange cylinder at the port end of the line.
Comet class flag will be used for the class flag.
A boat starting later than 10 minutes after her starting signal will be scored Did Not Start without a hearing. This changes rule A4.
12. **Recalls:** The Race Committee will attempt to hail boats that have started on the course side, solely as a courtesy. It is the skipper's responsibility to recognize and correct his/her violation. Failure to hear one's sail number is not grounds for redress.
13. **The Finish:** The finishing line will be between the staff displaying the yellow flag on the committee boat and an orange cylinder at the port end of the line.
14. **Time Limit:** If no boat passes mark #1 within 30 minutes, the race will be abandoned. If no boat finishes the race within 1.5 hours, the race will be abandoned. Failure to meet the target time will not be grounds for redress. This changes rule 62.1.
Boats failing to finish within 30 minutes after the first boat sails the course and finishes, will be scored Did Not Finish without a hearing. This changes RRC 35, A4 & A5.
15. **Protests and Requests for Redress:** In addition to the requirements of 61.1, a boat intending to protest shall inform the Race Committee at the finishing line and receive acknowledgement or as soon as practical thereafter. Protest forms are available at the CRYC Race Committee at flag pole. Protests and requests for redress shall be delivered to the Race Committee within 1 hour of the docking of the boat each day. A signal will be made when the RC boat docks. This changes RRC 62.2 and 66.
16. **Scoring:** The Low Point Scoring System will apply. One (1) completed race is necessary to constitute a regatta. If five (5) or fewer races are completed a boat's event score will be the total of her race scores. If six (6) or more races are completed a boat's event score will be the total of her scores excluding her worst score.
17. **Sail Numbers and Measurement:** Each mainsail shall display the sail number as indicated on the submitted Entry Form.
18. **Crew and Boat:** The same crew and boat will be used throughout the regatta unless approval for a change is made and granted in writing by the VP Championship Regattas or CCYRA President. CCYRA rules require all boats to be equipped with, 50 ft. of line, paddle, and two Coast Guard-approved wearable personal flotation devices (PFD).
19. **Launching and Overnight boat storage:** A boat lift is available for launching and haul-out. A floating dock will

be available for overnight haul out on a first come basis.

20. **Prizes:** Prizes will be given as follows:

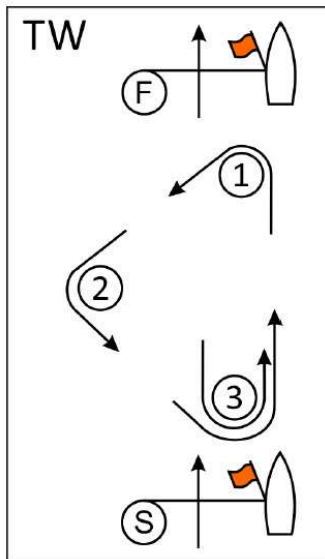
Regatta trophies: Awarded to top five (5) skippers and crew

Perpetual trophies:

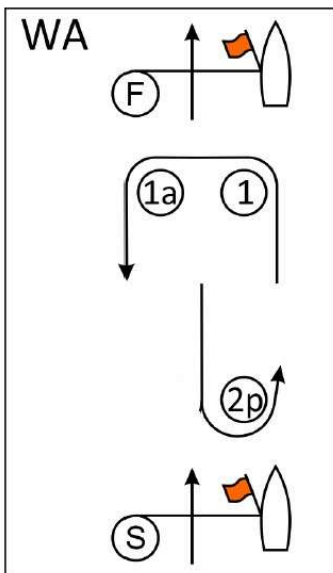
President's Permanent Trophy	1st Overall
Jay Achenbach Trophy	2nd overall
C. Lowndes Johnson Trophy	1st in 1st race
Wilbur Hamilton-Haines Trophy	1st in last race
Eugene Barilla Trophy	Best finish from the sponsoring club
Herbert L. Stone Trophy	First time participant with best score
Dr. Allen Brown Memorial Trophy	Best score for Skipper 21 years old or under

21. **Disclaimer of Liability:** Competitors participate in the regatta entirely at their own risk. See RRS Rule 4, Decision to Race. Each competitor is solely responsible for his/her own safety. The organizing authority will not accept any liability for material damage or personal injury or death sustained in conjunction with or prior to, during, or after the regatta. A boat retiring from a race shall notify the race committee or patrol boat as soon as practical.

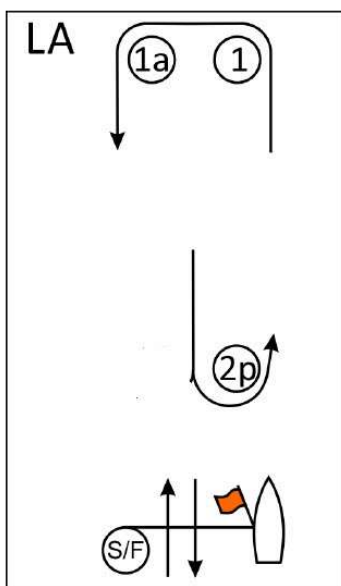
22. Figures:



Course TW – Triangle, Windward Finish	
Signal	Mark Rounding Order
TW2	Start – 1 – 2 – 3 – Finish
TW3	Start – 1 – 2 – 3 – 1 – 3 – Finish
TW4	Start – 1 – 2 – 3 – 1 – 3 – 1 – 3 – Finish



Course WA – Windward/Leeward with Offset Mark, Windward Finish	
Signal	Mark Rounding Order
WA2	Start – 1 – 1a – 2s/2p – Finish
WA3	Start – 1 – 1a – 2s/2p – 1 – 1a – 2s/2p – Finish
WA4	Start – 1 – 1a – 2s/2p – 1 – 1a – 2s/2p – 1 – 1a – 2s/2p – Finish



Course LA – Windward/Leeward with Offset Mark, Leeward Finish	
Signal	Mark Rounding Order
LA2	Start – 1 – 1a – 2s/2p – 1 – 1a – Finish
LA3	Start – 1 – 1a – 2s/2p – 1 – 1a – 2s/2p – 1 – 1a – Finish
LA4	Start – 1 – 1a – 2s/2p – 1 – 1a – 2s/2p – 1 – 1a – 2s/2p – 1 – 1a – Finish