



2025 Newport to Ensenada, MX Event

April 25-27, 2025

SAILING INSTRUCTIONS

Newport Ocean Sailing Association (NOSA) is the Organizing Authority

1. GENERAL

- 1.1 The OA invites skippers of eligible boats to enter under the conditions of the Notice of Race (NOR).
- 1.2 NOSA address: P. O. Box 7485, Newport Beach, CA 92658; website: www.nosa.org
- 1.3 PHRF of Southern California (PHRF) is the Rating Authority (RA) for monohulls.
- 1.4 Ocean Racing Catamaran Association (ORCA) is the Rating Authority (RA) for multihulls.
- 1.5 The term Skipper as used herein is defined as the person, whether or not the owner of the boat, who is designated on the entry form, and for the purpose of RRS 46, is the person in charge as relates to the Racing Rules of Sailing or any matters related to the event. The Skipper is responsible for the boat, its handling and safety, the conduct of its crew, support person(s) before, during, and after the race, and compliance with the rules.

2. RULES

- 2.1 The event is governed by the rules as defined in the Racing Rules of Sailing (RRS) and Equipment Rules of Sailing (ERS).
- 2.2 The Prescriptions of the US National Authority apply except as modified in the NOR.
- 2.3 The US Sailing Safety Equipment Requirements (USSER) Coastal Category will apply, except as modified in the NOR.
- 2.4 Appendix WP RULES FOR RACING AROUND WAYPOINTS Applies.
[https://www.sailing.org/tools/documents/AppendixWPRulesforRacingAroundWaypoints-\[19996\].pdf](https://www.sailing.org/tools/documents/AppendixWPRulesforRacingAroundWaypoints-[19996].pdf)

3. CHANGES TO SAILING INSTRUCTIONS

- 3.1 Any change to the sailing instructions will be posted on www.nosa.org before 0900 on the day it will take effect, except that any change to the schedule of races will be posted by 2000 on the day before it will take effect.

4. COMMUNICATIONS WITH COMPETITORS

- 4.1 Notices to competitors will be posted on the Official Notice Board located on the NOSA website at www.nosa.org and at the race desk at Hotel Coral, Ensenada, MX.
- 4.2 [DP] While racing, except in an emergency, a boat shall not make voice or data transmissions and shall not receive voice or data communication that is not available to all boats. This restriction also applies to mobile phones.

5. CODE OF CONDUCT

- 5.1 [DP] Competitors and support persons shall comply with reasonable requests from race officials.

6. YB TRACKERS

- 6.1 Each boat shall carry a YB Tracker (active position transponder) as supplied by NOSA. The YB Tracker shall be **ON** and functioning from Thurs, April 24, 2025 at 1500 until the boat has docked after finishing.
- 6.2 YB Trackers will be available at the Skipper Packet pickup times and locations.
- 6.3 The race committee will use the YB Tracker data finish times.
- 6.4 YB signal tracking will be turned off at 1100 on Sunday, April 27, 2025.
- 6.5 Boats are responsible for returning the YB Tracker in working order. Broken or lost transponders may be subject to a replacement/damage charge of up to £650 (approximately \$800.00 USD).
- 6.6 Turn in your YB Tracker at the race desk at Hotel Coral, Ensenada, MX. or to a return site listed with each tracker.
- 6.7 YB Trackers must be returned by Thursday, May 1, 2025.

7. SCHEDULE OF RACE

- 7.1 The scheduled time of the warning signal for the first start class is 1055 hours on Friday, April 25, 2025 or as posted at nosa.org in accordance with paragraph 3.1.
- 7.2 To alert boats that a sequence will begin soon, the orange starting line flags will be displayed with one sound at least five minutes before the first warning signal.
- 7.3 All subsequent starts are at ten (10) minute intervals until all classes have started. See SI 11.1.

8. CLASS DIVISIONS AND IDENTIFICATION FLAGS

- 8.1 Start-class designations, starting assignments, starting times and start-class identification flag assignments will be made available on the NOSA website www.nosa.org no later than Friday, April 18, 2025.
- 8.2 [DP] While in the starting area and while racing, the class identification flag shall be flown from the backstay, at least six (6) feet above the deck. Boats without back-stays, shall fly the identification flag from either the shroud six (6) feet above the deck or a stern pulpit.

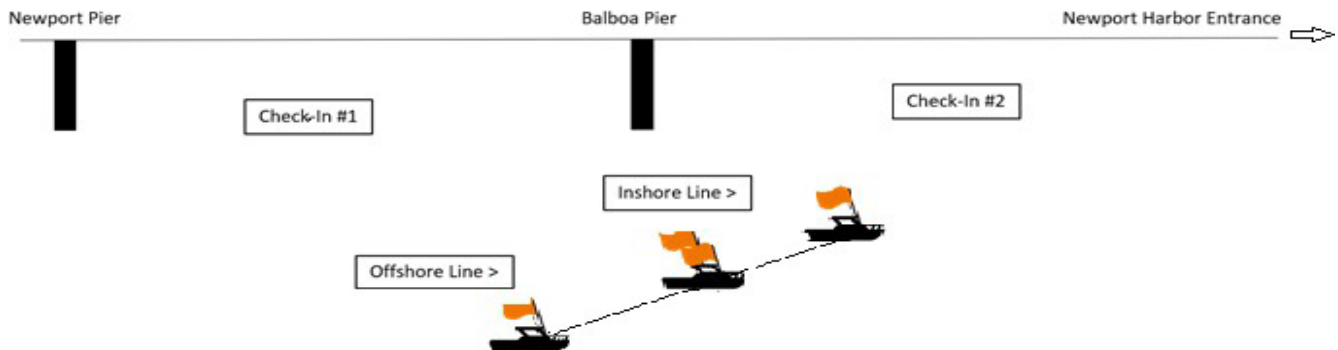
9. COURSE

- 9.1 The race will start off Balboa Pier in Newport Beach, CA and finish approximately .5 nm south and 0.1 nm east of Punta Morro in Ensenada, MX. The finish will be virtual based on the YB Tracker. No race committee vessel will be on station, no visual marks will indicate the finish line. See Attachment #2.
- 9.2 There may be one (1) "WELCOMING BUOY" set in the vicinity of the finishing area. This buoy is not a Mark of the course and does not designate the Finish. The buoy may drift depending on wind, tide and sea state conditions.
- 9.2 For scoring purposes, the handicap distance is 124 nautical miles.
- 9.3 The course will not be shortened. This changes RRS 32.

10. CHECK-IN

10.1 As shown below, and in ATTACHMENT #1, there will be two Check-in vessels:

CHECK IN VESSEL # 1 (Waypoint)	33° 36.052' N
CHECK IN VESSEL # 1 (Waypoint)	117° 55.103' W
CHECK IN VESSEL #2 (Waypoint)	33° 35.621' N
CHECK IN VESSEL #2 (Waypoint)	117° 53.492' W



10.2 Each entrant must pass close-by one of the check-in boats and hail the boat's SAIL NUMBER, BOAT NAME and the NUMBER OF SOULS ON BOARD to a Check-in vessel and obtain a verbal acknowledgment by return hail from the Check-In vessel.

11. THE START

11.1 Races will be started using RRS 26, with a projected 5 (five) minute interval between classes.

11.2 There are two separate starting lines designated the "INSHORE LINE" and the "OFFSHORE LINE" shown above.

11.3 The ends of the two starting lines are identified with staffs displaying orange flags on the starting line vessels. The Inshore starting line is between a staff displaying an orange flag on the port end starting line vessel and a staff displaying an orange flag on the center starting line vessel. The Offshore starting line is between a staff displaying an orange flag on the center starting line vessel and a staff displaying an orange flag on the starboard end starting line vessel.

11.4 As shown above, and in Attachment #1, the target starting area will be located seaward and westerly of the end of the Balboa Pier, Newport Beach, CA.

Start Line End (Waypoint)	33° 35.810' N
Start Line End (Waypoint)	117° 54.400' W

11.5 See NOR Section 3 for World Sailing test rule DR 21 – 01 for details about the change to the definition of *Start*.

12. RADIO COMMUNICATION

12.1 NOSA will broadcast information on VHF Channel 6 regarding class starts, countdown times, “On Course Side” starters, other Race Signals, and any special emergency announcements before and during the starts. VHF Channel 68 will be used if VHF Channel 6 is not working.

12.2 **[DP]** During all starting sequences, entrants shall not transmit over VHF Channel 6 or attempt to contact the race committee on any other channel. The race committee will not respond to any calls.

12.3 Failure of any radio announcement shall not constitute grounds for redress.

13. RECALL

13.1 If any part of a boat’s hull is on the course side of the starting line at her starting signal and she is identified, the race committee will hail her sail number over VHF Channel 6. Failure of a boat to see or hear her recall notification shall not be grounds for redress. A boat’s position in the sequence of hailed numbers or broadcast numbers shall not be grounds for redress.

13.2 Failure of any radio announcement shall not constitute grounds for redress.

14. THE FINISH

14.1 Boats should be aware of the following potential hazards and stay clear of them:

Uncharted shallow submerged rock (Waypoint)	31° 51.530'N
Uncharted shallow submerged rock (Waypoint)	116° 39.747'W
Charted shallow area (Way point)	31° 51.029'N
Charted shallow area (Way point)	116° 41.454'W

There is also a shallow submerged rock inside the Hotel Coral Marina entrance, marked with a small buoy.

14.2 The finish will be virtual based on the YB Tracker. No race committee vessel will be on station, no visual marks will indicate the finish line. The finish line will be identified as a straight line between the following coordinates:

Finish Line End (Waypoint) **31° 51.200'N 116° 40.000'W**

Finish Line End (Waypoint) **31° 51.070'N 116° 40.000'W**

SEE ATTACHMENT #2

14.3 The YB Tracker will transmit a LAT/LON and PDT time when it crosses the finish line. This data will be used to determine the time of the boat's finish.

14.4 In addition to the data provided by the YB Tracker, all boats are required to document the moment they cross the finish line with a legible photo or screen-shot of navigation equipment showing finish time generated from GPS in PDT, and finish LAT/LON of their vessel as proof of time/location of their estimation of finish.

14.5 All Boats are required to submit their finish times and LAT/LON photos as soon as possible, but not later than 4 hours after docking and no later than 1100 on Sunday, April 27, 2025.

Submissions may be sent by text to 949-220-4461, email to info@nosa.org, printed or presented on digital USB drive in person to NOSA personnel at Headquarters in Ensenada.

15. PENALTY SYSTEM

15.1 The Two-Turns Penalty and One-Turn Penalty in RRS 44.1 are replaced with an Elapsed Time penalty. The penalty will be 10% of a boat's Elapsed Time, added to her Elapsed Time for each incident.

15.2 **[DP]** Boats protested and found by the protest committee following a hearing to have broken a rule for equipment or safety violation under US Safety Equipment Regulations (USSER) shall be penalized. The protest committee will apply a minimum of thirty (30) minutes added to the boat's recorded elapsed time, up to a maximum of disqualification (DSQ) for each found violation. The change constitutes the "other penalty" in RRS 64.2 for a breach of these rules.

16. TIME LIMIT

16.1 Race Time Limit for the race is 1100 Sunday, April 27, 2025.

16.2 Boats failing to finish by 1100 Sunday, April 27, 2025, will be scored Time Limit Expired (TLE). A boat scored TLE will receive no finish time. This changes RRS 35, A5.1, A5.2 and A10.

16.3 Failure to meet the Race Time Limit will not be grounds for redress.

16.4 Any boat that starts, but retires before finishing, shall report Did Not Finish (DNF) as soon as possible, but in no case later than 1100, Sunday, April 27, 2025, by calling NOSA at 949-220-4461.

17. HEARING REQUESTS

17.1 The protest committee and hearings requests room will be located at Hotel Coral, Ensenada, MX.

17.2 Hearing request forms are available both at the race desk and the NOSA Website indicating where and how to submit.

<https://nosa.org/protests/> . Hearing requests shall be submitted within two (2) hours of the protesting boat's finish time or prior to TLE; (1100 Sunday, April 27, 2025), whichever is earlier.

- 17.3 To electronically file a protest, request for redress or reopening hearing, go to URL: <https://nosa.org/protests/>. Select N2E event. (protest.n2e@nosa.org).
- 17.4 Hearings may be heard starting at 1400 on Saturday, April 26, 2025, in the hearing room, normally in the order received. Hearing request(s) not heard on Saturday, April 26, 2025 will be heard starting promptly at 0900 on Sunday, April 27, 2025, in the hearing requests room, normally in the order received.
- 17.5 Hearing requests or requests to reopen a hearing notification will be posted on the Official Notice Board located at: <https://nosa.org/protests/> and near the race desk (Headquarters) at the Hotel Coral in Ensenada, MX. Scheduled times, room location for the hearings and sail numbers of the involved boats will be posted.
- 17.6 It is the responsibility of competitors to observe the posted hearing requests to determine if their boat is involved in a Protest. Scheduled times and location of hearing request(s) will be posted. requests will proceed at or as close as is possible to the scheduled hearing time whether a representative from the boat(s) is/are present or not.

18. EQUIPMENT AND MEASUREMENT CHECKS

- 18.1 A boat or its equipment may be inspected at any time for compliance with the US Safety Equipment Regulations (USSER), The Racing Rules of Sailing, Class Rules, NOR and the sailing instructions.
- 18.2 **[DP]** Notwithstanding any other penalties already specified in the notice of race or sailing instructions, the protest committee may, after a hearing, assess an additional penalty(s) up to and including disqualification.

19. EVENT ADVERTISING

- 19.1 **[DP]** Any NOSA supplied 2025 race participation flags shall be flown in accordance with instructions provided in the NOSA Skipper Packet.
- 19.2 Advertising on a boat shall comply with the requirements of World Sailing Regulation 20. Boats may be required to display advertising chosen and supplied by the organizing authority. If this rule is broken, World Sailing Regulation 20.9.2 applies.

20. ENGINE USE

- 20.1 An engine may be used for charging batteries, pumping bilges or supplying power for weighing anchor or refrigeration while in neutral.

21. ADDITIONAL INSTRUCTIONS FOR CRUZ FLEETS

- 21.1 Paragraphs 21 through 23 apply only to CRUZ Fleet boats.

22. CRUZ FLEETS ENGINE USE

- 22.1 An engine may be used for charging batteries, pumping bilges or supplying power for weighing anchor or refrigeration while in neutral. In addition, CRUZ Fleet participants may use an engine for propulsion within the limitations stated below.
- 22.2 During the race, motoring time is defined as engine in-gear propulsion time. A boat's engine may not be put in-gear for propulsion within thirty (30) minutes after that vessel's start time.

- 22.3 A boat's speed in knots may not exceed its hull speed while the engine is in-gear propelling the boat. Hull speed is defined as $1.34 \times \text{Square Root (LWL)}$, where "LWL" is the length of the waterline in feet.

23. RECORDING REQUIREMENTS

- 23.1 The skipper shall record on the CRUZ Fleet Engine Log both the GPS Latitude and Longitude position of the boat (to the second decimal place of a minute) and the GPS time (to the nearest second) on each occasion when the engine was put in-gear and was taken out of gear.
- 23.2 A minimum of 30 minutes shall be recorded each time the engine is put in-gear.
- 23.3 Record the total engine in-gear propulsion time in **MINUTES**.

24. FILING THE 2025 NOSA CRUZ FLEET ENGINE LOG

- 24.1 All CRUZ Fleet participants that finish shall file a CRUZ Fleet Engine Log, **even if the engine is not used**. The CRUZ Fleet Engine Log will be included in the Skipper's Packet. The CRUZ Fleet Engine Log must be submitted within four (4) hours of the boat's finish time or within the race time limit, whichever is earlier.
- 24.2 CRUZ Fleet boats that are returning to USA immediately after crossing the finish line and are unable to turn in the CRUZ Fleet Engine Log in person, must take a picture of the completed log and email it to info@nosa.org within the time limit described in SI 24.1.
- 24.3 **[DP]** A CRUZ Fleet boat failing to correctly complete and file her CRUZ Fleet Engine Log, may be protested by the race committee and may be penalized up to a Disqualification (DSQ) by the protest committee following a hearing.
- 24.4 **ENGINE USE IMPACT ON FINAL CORRECTED TIME** - An Adjustment equal to $(\text{IN-GEAR-TIME} \times 0.40 \times \text{Square Root (LWL)})$ will be added to the Corrected Time to produce a Final Corrected Time.

25. RISK STATEMENT

- 25.1 RRS 3 states: 'The responsibility for a boat's decision to participate in a race or to continue to race is hers alone.' By participating in this event each competitor agrees and acknowledges that sailing is a potentially dangerous activity with inherent risks. These risks include strong winds and rough seas, sudden changes in weather, failure of equipment, boat handling errors, poor seamanship by other boats, loss of balance on an unstable platform and fatigue resulting in increased risk of injury. **Inherent in the sport of sailing is the risk of permanent, catastrophic injury or death by drowning, trauma, hypothermia or other causes.**

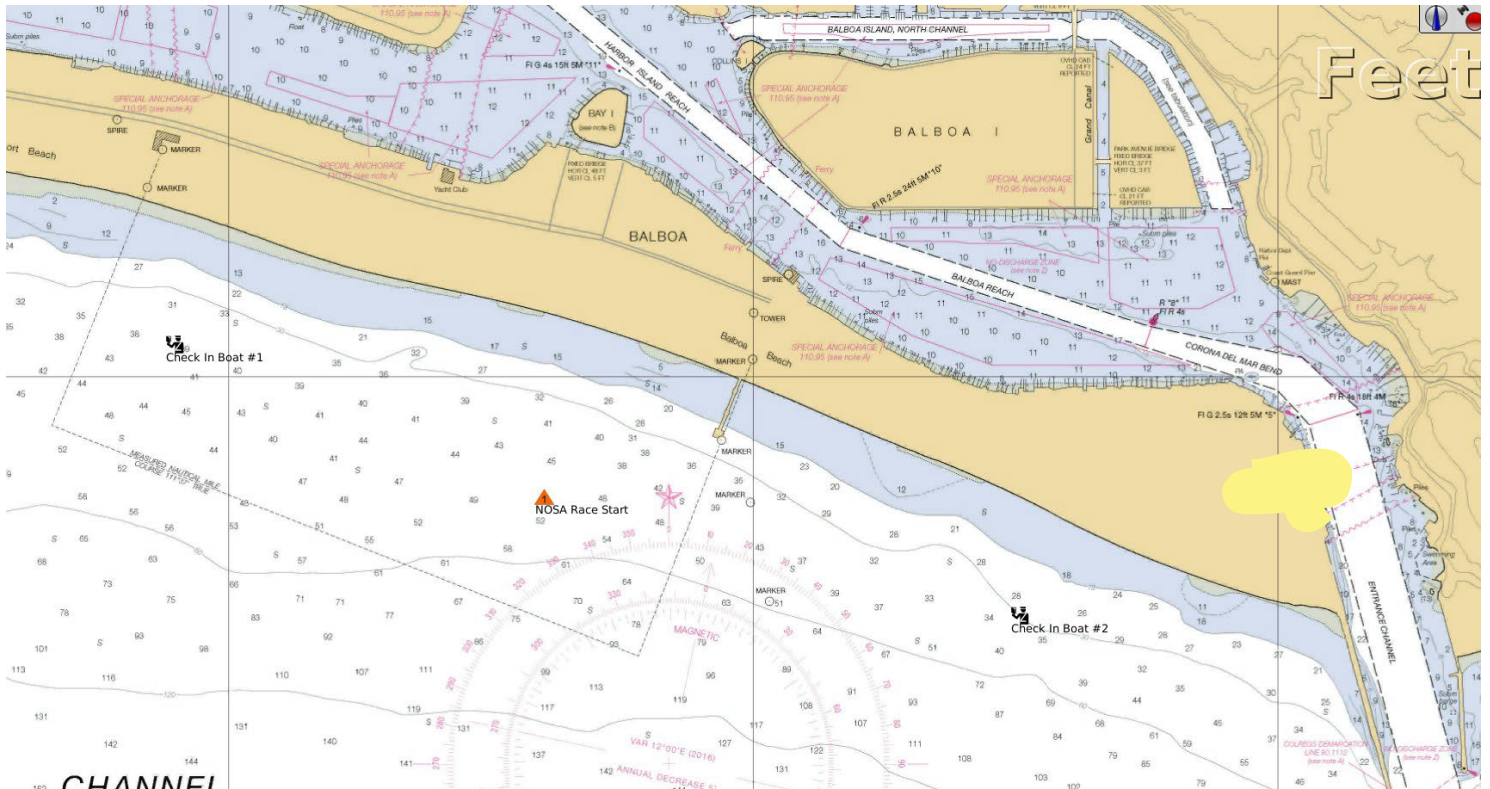
- 25.2 **SEE ATTACHMENT #3** – Location of Tuna Farm in Mexican Waters.

26. INSURANCE

- 26.1 Each participating boat shall be insured with valid third-party liability insurance with a minimum cover of \$300,000.00 USD per incident or the equivalent.

ATTACHMENT # 1

CHECK IN AND START AREA



CHECK IN VESSEL # 1 (Waypoint)
CHECK IN VESSEL # 1 (Waypoint)

33° 36.052' N
117° 55.103' W

CHECK IN VESSEL #2 (Waypoint)
CHECK IN VESSEL #2 (Waypoint)

33° 35.621' N
117° 53.492' W

STARTING AREA - Will be located seaward and westerly of the end of the Balboa Pier, Newport Beach, CA.

Start Line End (Waypoint)
Start Line End (Waypoint)

33° 35.810' N
117° 54.400' W

ATTACHMENT # 2

N2E Finish Line and Surrounding Area



The finish will be virtual based on the YB Tracker. No race committee vessel will be on station, no visual marks will indicate the finish line. The finish line will be identified as a straight line between the following coordinates:

Finish Line End (Waypoint) **31° 51.200'N 116° 40.000'W**

Finish Line End (Waypoint) **31° 51.070'N 116° 40.000'W**

ATTACHMENT # 3

Safety Notice: Tuna Pens - Mexico

