



2025 Around Catalina Race

Saturday, February 8th, 2025

SAILING INSTRUCTIONS

The 2025 Around Catalina Island Race, February 8th will be presented by Los Angeles Yacht Club® who is the Organizing Authority (OA). The club is located at 285 Whaler's Walk, San Pedro, California 90731. The LAYC® telephone number is (310) 831 1203, and the web address is www.LAYC.org

The person in charge of each boat is responsible for providing LAYC Race Committee with contact information for each crew member to enable individuals to be traced for any reason during or after the event. This list should be emailed to tomtrujillo@me.com and Racing@layc.org before the start.

1. RULES

1.1 This series will be governed by the "rules" as defined in The Racing Rules of Sailing (RRS), and the US Sailing Safety Equipment Requirements, (USSER), US Coastal Race level, effective January 1, 2025, except as modified by the Notice of Race and the Sailing Instructions.

1.2 The preamble to Appendix J states "A rule in the notice of race need not be repeated in the sailing instructions". **Please always carry both the NOR and the SI.**

2. NOTICES TO COMPETITORS

2.1 There will be no skippers meeting and there will be no signals made ashore.

3. SCHEDULE

3.1 The warning signal for the Class A will be at 1155 am. The class flag will be the letter "A".

3.2 There is no class "B". This changes Notice of Race 3.2.

3.3 A minimum of two boats will constitute a class. This changes Notice of Race 3.2.

3.4 Notices to competitors shall be posted on the official notice board located just inside the main entrance to Los Angeles Yacht Club and online at www.layc.org

3.5 Any amendment to the sailing instructions will be posted before 1000 hours on the day of the race. If necessary, Race Committee will use VHF channel 71 to provide any oral changes prior to the warning signal.

4. CHECK-IN AND RETIREMENT

4.1 When the Race Committee boat is anchored on station and code flag L is displayed, each boat shall pass the stern of the race committee boat on starboard and hail her sail number, which will be acknowledged.

4.2 A boat that retires from the race shall notify the Race Committee at the very first opportunity after retiring. The Race Committee will attempt to monitor VHF channel 71. The Race Committee can also be reached at 213-500-3545. An alternate number for LAYC communications during working hours is 310-831-1203.

5. COURSE

5.1 The racing area will be in the vicinity of Los Angeles Harbor

5.2 The starting and finishing area will be approximately 1.5 nautical miles Northeast of the Los Angeles Harbor Entrance, in the vicinity of S/F 1, LAYC Course Chart 2014-1 (attached below).

5.3 The racecourse will be to leave Catalina Island to port, returning to finish at Angel's Gate. 68.8 nm.

6. THE START

6.1 Races will be started using RRS 26 with the warning signal made 5 minutes before the starting signal.

6.2 The starting line will be between a staff supporting an orange flag on the Race Committee boat at the starboard end of the line and an orange tetrahedron on the port end.

6.3 Class flag referenced above (3.1) will be a dark blue rectangular flag with white letters as indicated. Race boats are NOT required to fly their class flag from the backstay.

6.4 An attention signal of multiple sound signals will be made one minute before the warning signal.

6.5 A boat that does not start within 10 minutes after her starting signal shall be scored DNS without a hearing. This changes RRS A4 and A5.

6.6 As a courtesy, the Race Committee will attempt to notify recalled boats by hailing their sail number over VHF channel 71. Failure of a boat to see or hear her recall notification shall not relieve her of her obligation to start correctly and shall not be grounds for redress. A boat's position in the sequence of hailed numbers or broadcast numbers shall not be grounds for redress. This changes RRS 62.1(a).

7. FINISH

7.1 The finishing line is between FL G and FL R at Angel's Gate, Los Angeles Harbor.

7.2 Upon finishing all competitors shall email or text their finish time with an image of the GPS lat/long and time to the PRO, Tom Trujillo at tomtrujillo@me.com, or text to 213-500-3545.

8. RADIO COMMUNICATIONS

8.1 The Race Committee intends to monitor VHF Channel 71. Skippers are required to have a VHF radio capable of receiving and transmitting on this channel.

8.2 The Race Committee may use VHF 71 to broadcast information such as the location of the Race Committee boat, sail numbers of yachts recalled OCS, change of course, etc. Failure to receive or hear such radio transmission shall not be grounds for redress.

9. PROTESTS

9.1 A boat intending to protest shall notify the race committee and identify the boats involved by email promptly after finishing to tomtrujillo@me.com or text 213-500-3545 This shall be considered a component of validity.

9.2 Protests shall be written and emailed to the PRO before 23:59 on Sunday, February 9th.

9.3 The Protest Committee will arrange a time and date to hear all protests and whether they will be live or virtual.

10. SCORING

10.1 The low point system of RRS Appendix A will apply.

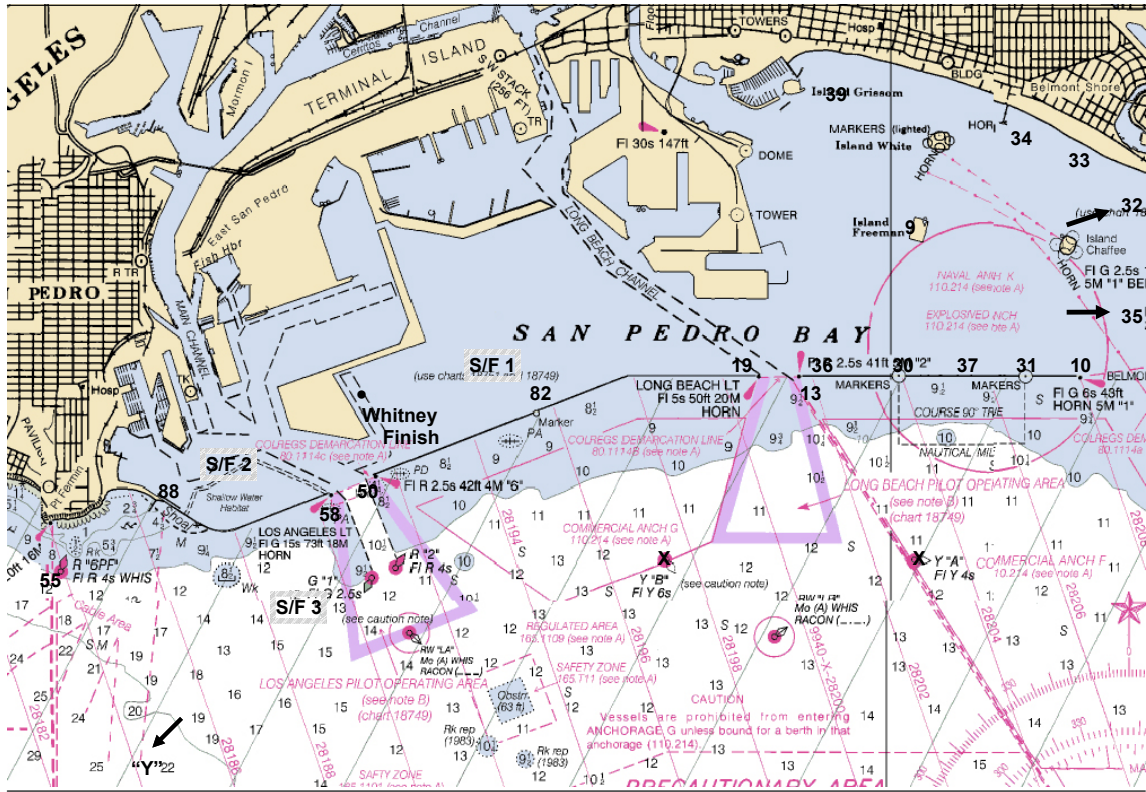
11. TROPHIES AND HOSPITALITY

11.1 Trophies will be awarded in each class dependent on the number of entries.

11.2 Results will be posted at www.layc.org as soon as they are available.

11.3 The trophy presentation will take place the Sunday February 9th, at approximately 5:00 pm during LAYC's Super Bowl Party. Sailors and their guests shall RSVP for the party to (310) 831 1203.

LOS ANGELES YACHT CLUB RACE COURSE CHART
NO. 2014-1



NOT TO BE USED FOR NAVIGATION

1/20/14