



# Geechee Sailing Club

46<sup>th</sup> ANNUAL ST. PATRICK'S REGATTA  
MARCH 22 - 23, 2025



## SAILING INSTRUCTIONS

### 1. RULES

As stated in the NOR, this regatta is governed by the "rules" as defined in the *Racing Rules of Sailing (RRS)*.

### 2. COMMUNICATION WITH COMPETITORS

Notices to competitors will be posted on the official notice board located at Event Site:

<https://www.regattanetwork.com/event/29139> Newsroom & Results page. As a courtesy, Notices to competitors may be announced at the Competitors' meeting and hailed over the VHF hailing channel 72 prior to the First Warning Signal of the day.

### 3. CHANGES IN SAILING INSTRUCTIONS

- 3.1. Any change in the sailing instructions will be posted before 0900 on the day it will take effect, except that any change to the schedule of races will be posted by 1930 on the day before it will take effect.
- 3.2. Oral changes to the SIs may be given on the water by hail from the RC Signal boat in accordance with RRS 90.2(c). The RC Signal boat shall display code flag L with one sound and communicate the changes over the VHF hailing channel.

### 4. SIGNALS MADE ASHORE

- 4.1. Shore signals will be posted on the official notice board two hours prior to the scheduled First Warning Signal of the day. As a courtesy to competitors, Shore signals may also be hailed over the VHF hailing channel.
- 4.2. When AP is announced per SI 4.1, "1 minute" is replaced with "not less than 60 minutes" in Race Signals AP.

### 5. SCHEDULE OF RACES

Friday	7:00pm	Competitors' Meeting via Zoom Conference Call Meeting ID: 340 032 3155 Password: Savannah or dial (605) 313-4154 and use access code 464235.
Saturday	Noon	First Warning Signal
Sunday	Noon	First Warning Signal

### 6. Fleet Racing CLASS Flags

- 6.1. PHRF Class A – Spinnaker equipped boats – Yellow flag
- 6.2. PHRF Class B – Non spinnaker equipped boats – Pink flag

6.3. One Design Class: Rhodes 19 – Rhodes 19 flag

6.4. Additional Class flags may be assigned at the Competitors' Meeting and announced in accordance to SI 2.

## 7. RACING AREA

The racing area will be the Wilmington River, Wassaw Sound, and the Atlantic Ocean.

## 8. COURSES

8.1. Predefined courses are defined in Appendix A.

8.2. Race Committee may set a tetrahedron to weather of the starting line. The Race Committee shall designate Green or Red with the course number when a weather mark is set. Boats shall first sail to the weather mark, round the mark to **starboard** if **Green**, **port** if **Red** and then sail the designated course. This mark only applies at the start; it does not apply at the finish.

8.3. Race Committee will hail the course over the hailing channel and post on the signal boat course board prior to the Warning single for the race.

8.4. For the Pursuit race, the course to be sailed and the calculated start times for all boats will be posted on the event web site by 9pm on Saturday.

## 9. MARKS

9.1. Start and Finish Pins will be Orange Hippity Hops. Rounding marks, if used, will be Orange or Yellow Tetrahedrons.

9.2. Government marks, other than rounding marks, shall be honored and passed on their required side.

## 10. STARTING

10.1. As a courtesy to competitors, Race Committee may announce the starting sequence over the VHF hailing channel.

10.2. [DP] Before the Warning Signal of the first race each day, boats shall check in by sailing past the Signal Boat hailing their sail number or hailing over VHF and be acknowledged by Race Committee.

10.3. The starting line will be between a staff displaying an orange flag on the Signal Boat and the starting mark.

## 11. THE PURSUIT START

11.1. The pursuit race is a reverse PHRF handicap starting order. The boat with the slowest rating shall start first and the boat with the fastest rating shall start last.

11.2. The race shall use GPS time synchronization. The start times for all boats shall be based on their PHRF Time on Distance as called out on the Regatta Network Pursuit Start Sheet for Geechee Sailing Club St. Patrick's Regatta.

11.3. Race Committee signals the starting sequence as follows (this changes RRS 26):

12:00 Warning signal for all boats – Raise Geechee Burgee with one (1) sound

12:01 Preparatory signal for the first boat to start – Signal flag "P" with one (1) sound

12:02 Lower code flag "P" with a long sound

12:03 Starting signal for the first boat to start – Lower Geechee Burgee with one (1) sound.

Subsequent start time(s) for remaining boats – Briefly raise Geechee Burgee with one (1) sound.

11.4. The race committee may attempt to broadcast each upcoming start time on the VHF Hailing

- Channel. Failure of the race committee to announce a start time shall not be grounds for redress.
- 11.5. For the purposes of the definition of "racing," each boat's preparatory signal shall be four (4) minutes prior to their scheduled start time.
- 11.6. In the event a postponement is signaled on the water, Race Committee shall announce the revised start time on the VHF Hailing channel for the first boat before lowering the postponement flag. It is a boat's responsibility to calculate their new start time.

## **12. THE FINISH**

The finish line will be between a staff displaying a blue flag on a race committee boat and the finish mark.

## **13. PENALTY SYSTEM**

- 13.1. RRS Appendix V Alternative Penalties shall apply.
- 13.2. Propulsion is permitted for running aground as permitted by RRS 42.3(i).

## **14. TIME LIMITS**

- 14.1. The time limit for each PHRF/One Design race is two hours. Boats failing to finish within 45 minute Finishing Window after the first boat in their fleet sails the course, and not subsequently retiring, penalized or given redress, will be scored Time Limit Expired (TLE) without a hearing. A boat scored TLE shall be scored points for the finishing place one more than the points scored by the last boat that finished within the Finishing Window. This changes RRS 35, A5.1, A5.2 and A10.
- 14.2. The Time Limit for the Pursuit Race is four hours.

## **15. RETIREMENT**

[DP] When possible, a retiring boat shall notify Race Committee over the VHF hailing channel.

## **16. PROTESTS**

- 16.1. As a courtesy, after finishing or retiring, a boat intending to protest may notify Race Committee.
- 16.2. The Protest Time Limit is 30 minutes after the Signal Boat docks and will be announced over the VHF hailing channel.
- 16.3. Protests can be emailed to [joleenkrasmussen@gmail.com](mailto:joleenkrasmussen@gmail.com) or texted to 919-369-5784.
- 16.4. Arbitration as described in US Sailing RRS Appendix T may be offered.
- 16.5. Protests will be heard in approximately the order of receipt as soon as possible.
- 16.6. Hearing Schedule will be announced over VHF hailing channel within 10 minutes after the Protest Time limit to inform competitors where and when there is a hearing.

## **17. SCORING**

- 17.1. Saturday PHRF/One design races will use Time on Time handicapping. Each boat's elapsed time will be multiplied by a correction factor to determine their corrected time. The correction factor will be  $650/(550+\text{PHRF handicap})$ . The Low Point Scoring system RRS A2 will apply. A boat's score shall be the total of all her race finishes. There will be no throw-outs.
- 17.2. Sunday Pursuit Race will be scored in two classes: Spinnaker and Non-Spinnaker. Boats will be scored according to their class finish order.

## **18. DISCLAIMER OF LIABILITY**

Competitors participate in the regatta at their own risk. See rule 3- Decision to Race. The Organizing Authority will not accept any liability for material damage or personal injury or death sustained in conjunction with or prior to, during or after.

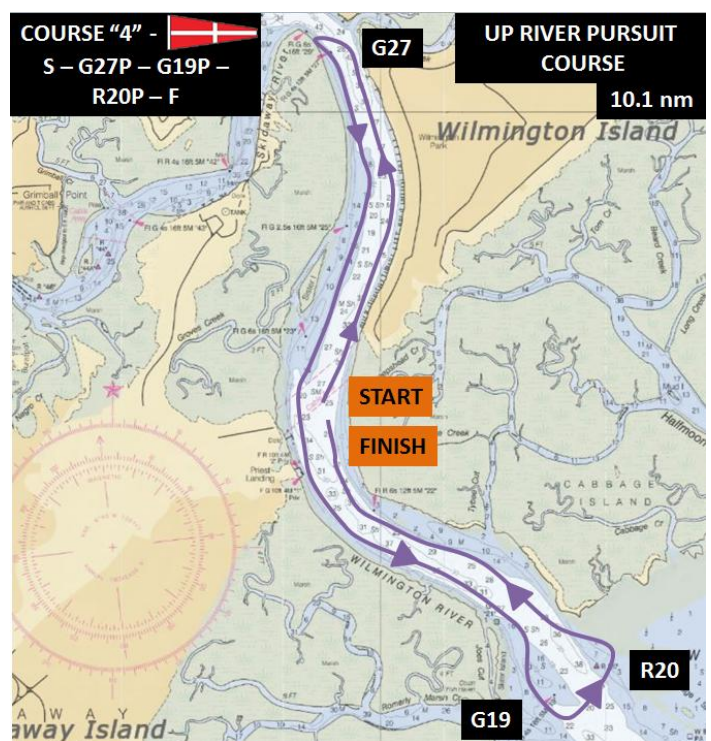
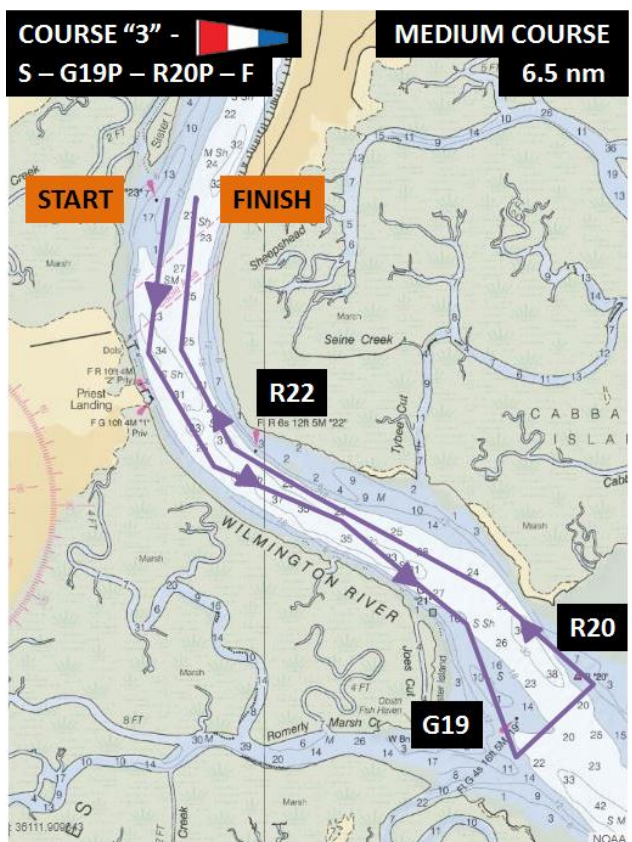
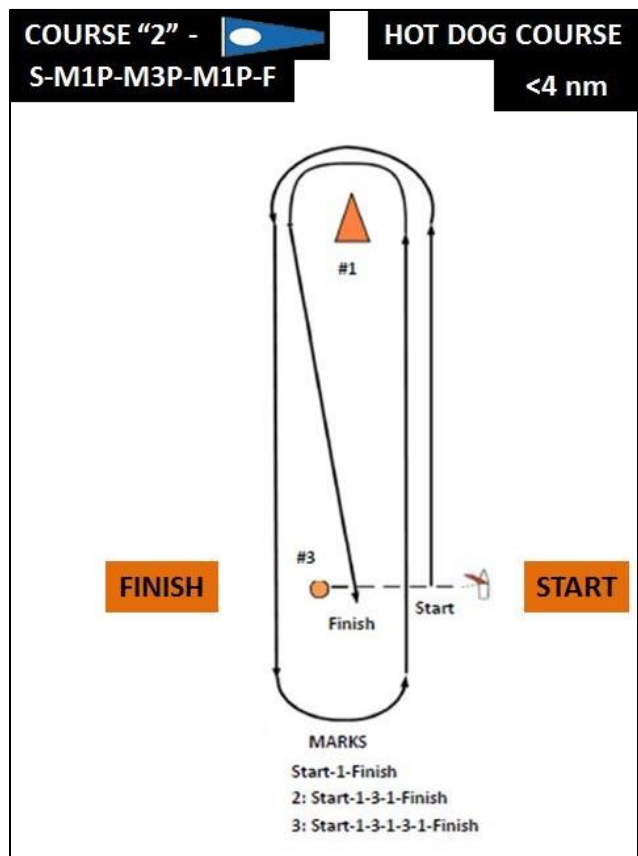
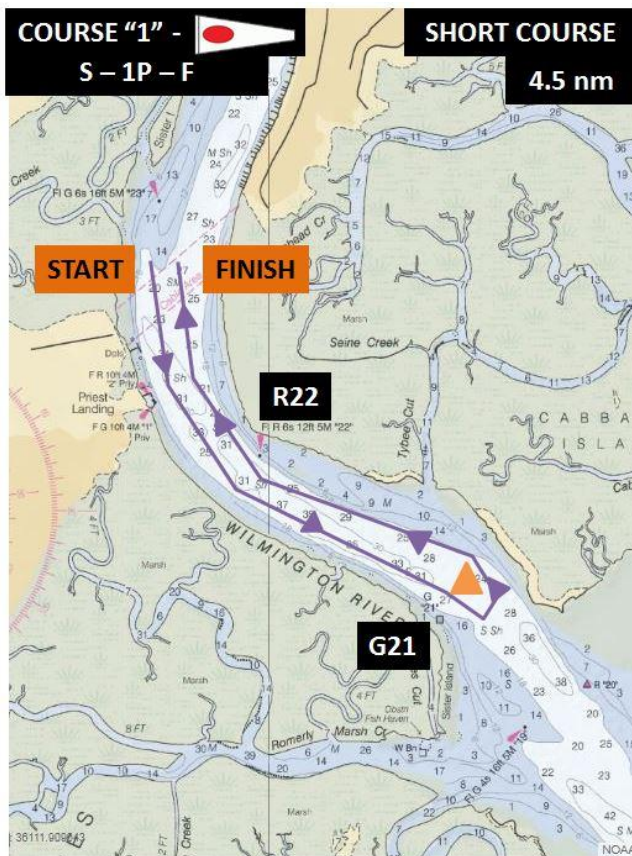
## **19. FURTHER INFORMATION**

Regatta Chair: Angela Margolit, 973-296-8011, [amargolit@hotmail.com](mailto:amargolit@hotmail.com)

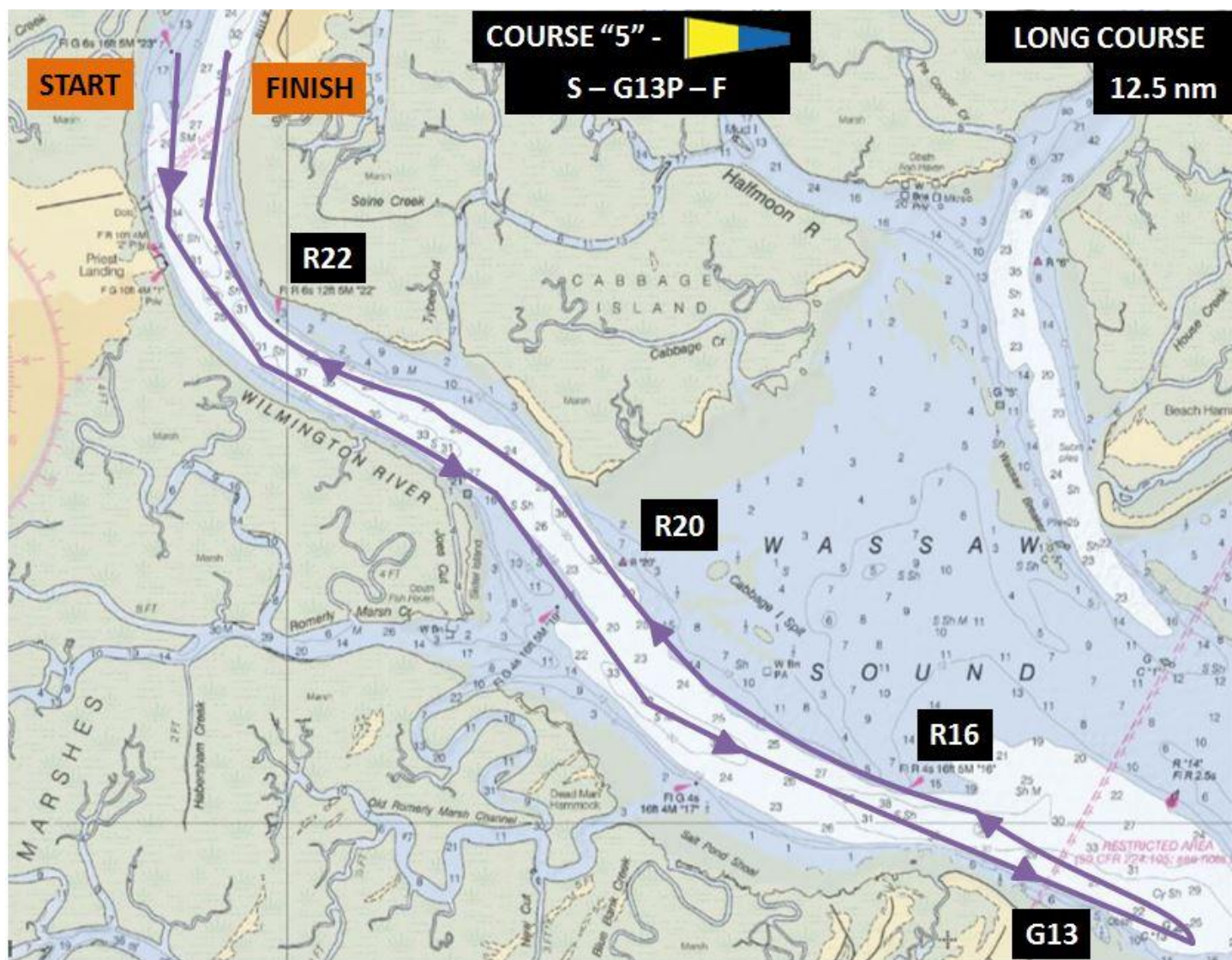
Race Officer/Chief Judge: Joleen Rasmussen, 919-869-5463 (new as of 3/19/25),  
[joleenkrasmussen@gmail.com](mailto:joleenkrasmussen@gmail.com)



## APPENDIX A – COURSES







**COURSE "6" -**    
**S – 1S – then see courses 1 thru 5**

**ADDITIONAL WEATHER MARK AT THE START**



**COURSE "6" -**    
**S – 1P – then see courses 1 thru 5**

**ADDITIONAL WEATHER MARK AT THE START**

